



**Probing Solutions.  
Made in Germany.**

EN



# Positioning Systems

**Test-& Debugging Platform**

Datasheet





**Easy as it should be**

SKID® is a unique platform designed to satisfy all sorts of different demands on PCBA testing and debugging in one single item. It offers a modular design, which enables the user to expand the SKID according to his needs.

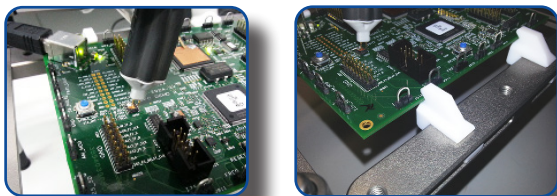
The frame is available in three versions: SKIDS offers a clamping width of at least 160x160 mm, which fits the 3U standard PCB form factor, SKIDM for 6U cards and SKIDL with a clamping width of 300 x 340mm. Of course smaller boards can be tested as well. The PCBA spacers can be positioned to clamp most geometrical forms; even inconvenient non-standard shapes, that are usually hard to clamp.

The PCBA resides 10 mm above the frame, offering a better accessibility to the dut and the SKID itself stands on 90 mm pedestals, enabling access from top- and bottom-side simultaneously. Standard M6 threads are all around the frame to mount equipment, such as probe positioners, lamps or other accessories.

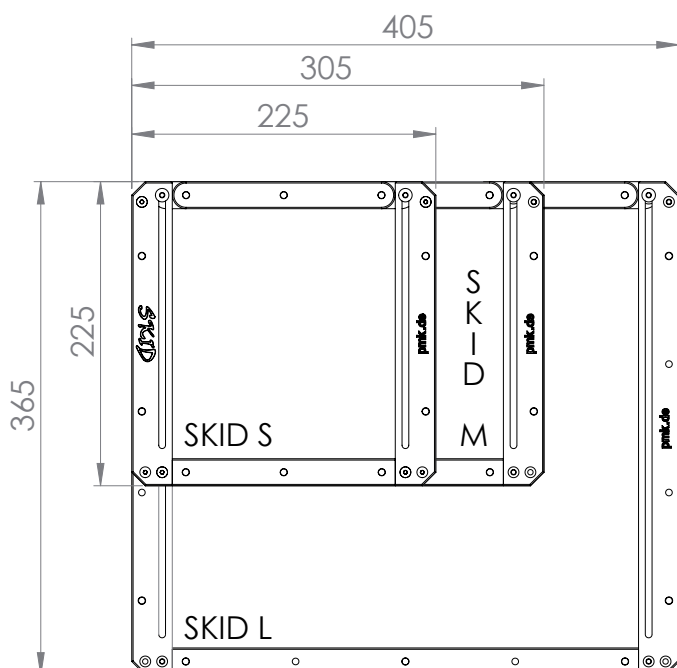
Depending on its configuration, SKID can be used for environmental testing in climate chambers for temperatures of -55 to +150°C.

**Key Features:**

- Handsfree testing & debugging
- Fast and universal setups
- Intuitive clamping system
- Environmental testing



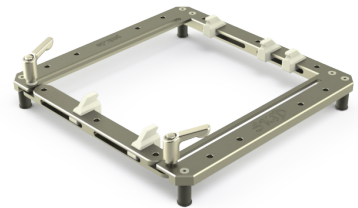
**Dimensions**



**The following configurations can be built with any SKID:**

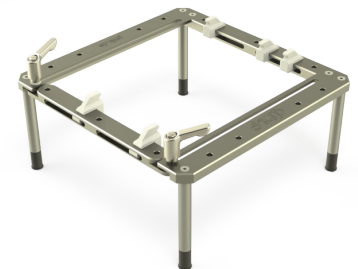
**Flat Assembly**

- With 20 mm stilts.  
(e.g. as soldering device)



**Standard Assembly**

- With 90 mm stilts.



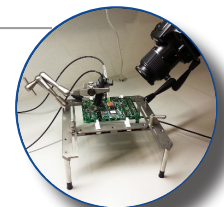
**Vertical Assembly**

- For operation from 2 sides.



**Fast setups - vast expansion**

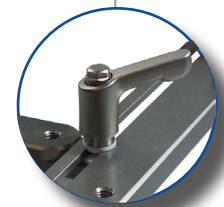
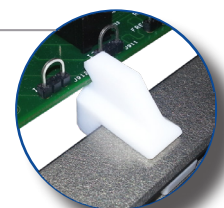
SKID is available in three sizes. Size S for 3U PCB's, Size M for 6U PCB's and Size L for any PCB's larger than the 6U standard. Since the frame consists only of a few parts, the setup of the SKID is done in a breath. M6 threads all around the frame allow mounting of multiple accessories, such as test equipment, lighting and magnifiers or even cameras to record or stream video. e.g. thermal images. The low gravity center of the SKID allows even comparable large and heavy devices to be mounted.







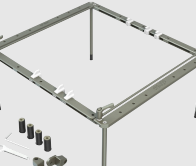

**Intuitive clamping - Hands free testing**

The release levers of the SKID are designed for single-hand use and slide stageless. PTFE sliders provide smooth movement on the frame surface.

Furthermore the SKID utilizes PCBA spacers, made of PTFE, to give the user the best choice of clamping PCBAs at various positions. Another advantage is the 10 mm gap the spacers provide positioning the PCBA above the frame, offering some additional workspace.



SKID Models - Scope of Delivery

<p><b>SKID-S, 3U Board Tester, (160 x 160 mm)</b>  Order No.: 893-500-000</p>		<ul style="list-style-type: none"> <li>• <a href="#">1x Frame SKID-S, 3U Board Tester</a> Order No.: 893-500-000</li> <li>• <a href="#">1x Single Head Wrench SW7mm</a> Order No.: 893-000-SW7</li> <li>• <a href="#">1x Allen Wrench 2,5 mm</a> Order No.: 893-000-I25</li> <li>• <a href="#">1x Skid Vertical Adapter Kit</a> Order No.: 893-291-501</li> <li>• <a href="#">4x Stilt SKID 2cm</a> Order No.: 016-291-503</li> <li>• <a href="#">4x Stilt SKID 9cm</a></li> </ul>	<p><b>SKID-S Starter Kit, 3U Board Tester, (160 x 160 mm)</b>  Order No.: 893-500-START</p>		<ul style="list-style-type: none"> <li>• <a href="#">1x SKID-S, 3U Board Tester</a> Order No.: 893-500-START</li> <li>• <a href="#">1x Single Head Wrench SW7mm</a> Order No.: 893-000-SW7</li> <li>• <a href="#">1x Allen Wrench 2,5 mm</a> Order No.: 893-000-I25</li> <li>• <a href="#">1x Skid Vertical Adapter Kit</a> Order No.: 893-291-501</li> <li>• <a href="#">4x Stilt SKID 2cm</a> Order No.: 016-291-503</li> <li>• <a href="#">4x Stilt SKID 9cm</a></li> <li>• <a href="#">1x Uniholder</a> Order No.: 893-090-000</li> <li>• <a href="#">1x Holder for Probes 5-12 mm</a> Order No.: 893-050-000</li> <li>• <a href="#">1x 3D Measuring-Tripod 130 mm</a> Order No.: 893-200-130</li> <li>• <a href="#">1x 3D Measuring-Tripod 200 mm</a> Order No.: 893-200-200</li> </ul>
<p><b>SKID-M, 6U Board Tester, (240 x 160 mm)</b>  Order No.: 893-500-010</p>		<ul style="list-style-type: none"> <li>• <a href="#">1x Frame SKID-M, 6U Board Tester</a> Order No.: 893-500-010</li> <li>• <a href="#">1x Single Head Wrench SW7mm</a> Order No.: 893-000-SW7</li> <li>• <a href="#">1x Allen Wrench 2,5 mm</a> Order No.: 893-000-I25</li> <li>• <a href="#">1x Skid Vertical Adapter Kit</a> Order No.: 893-291-501</li> <li>• <a href="#">4x Stilt SKID 2cm</a> Order No.: 016-291-503</li> <li>• <a href="#">4x Stilt SKID 9cm</a></li> </ul>	<p><b>SKID-M Starter Kit, 6U Board Tester, (240 x 160 mm)</b>  Order No.: 893-600-START</p>		<ul style="list-style-type: none"> <li>• <a href="#">1x SKID-M, 6U Board Tester</a> Order No.: 893-600-START</li> <li>• <a href="#">1x Single Head Wrench SW7mm</a> Order No.: 893-000-SW7</li> <li>• <a href="#">1x Allen Wrench 2,5 mm</a> Order No.: 893-000-I25</li> <li>• <a href="#">1x Skid Vertical Adapter Kit</a> Order No.: 893-291-501</li> <li>• <a href="#">4x Skid Vertical 2cm</a> Order No.: 016-291-503</li> <li>• <a href="#">4x Skid Vertical 9cm</a></li> <li>• <a href="#">1x Uniholder</a> Order No.: 893-090-000</li> <li>• <a href="#">1x Holder for Probes 5-12 mm</a> Order No.: 893-050-000</li> <li>• <a href="#">2x 3D Measuring-Tripod 200 mm</a> Order No.: 893-200-200</li> </ul>
<p><b>SKID-L, Board Tester, (340 x 340mm)</b>  Order No.: 893-500-020</p>		<ul style="list-style-type: none"> <li>• <a href="#">1x Frame SKID-L, Board Tester</a> Order No.: 893-500-020</li> <li>• <a href="#">1x Single Head Wrench SW7mm</a> Order No.: 893-000-SW7</li> <li>• <a href="#">1x Allen Wrench 2,5 mm</a> Order No.: 893-000-I25</li> <li>• <a href="#">1x Skid Vertical Adapter Kit</a> Order No.: 893-291-501</li> <li>• <a href="#">4x Stilt SKID 2cm</a> Order No.: 016-291-503</li> <li>• <a href="#">4x Stilt SKID 18cm</a></li> </ul>	<p><b>SKID-L Starter Kit, Board Tester, (340 x 300 mm)</b>  Order No.: 893-700-START</p>		<ul style="list-style-type: none"> <li>• <a href="#">1x SKID-L, Board Tester</a> Order No.: 893-700-START</li> <li>• <a href="#">1x Single Head Wrench SW7mm</a> Order No.: 893-000-SW7</li> <li>• <a href="#">1x Allen Wrench 2,5 mm</a> Order No.: 893-000-I25</li> <li>• <a href="#">1x Skid Vertical Adapter Kit</a> Order No.: 893-291-501</li> <li>• <a href="#">4x Stilt SKID 2cm</a> Order No.: 016-291-503</li> <li>• <a href="#">4x Stilt SKID 18cm</a></li> <li>• <a href="#">1x Uniholder</a> Order No.: 893-090-000</li> <li>• <a href="#">1x Holder for Probes 5-12 mm</a> Order No.: 893-050-000</li> <li>• <a href="#">2x 3D Measuring-Tripod 200 mm</a> Order No.: 893-200-200</li> </ul>

Available Accessories and Spares for SKID

Order No.	Item	Order No.	Item
893-000-MI6	Camera Adapter 1/4" to M6 (SW 13mm) 	893-291-501	Skid Vertical Adapter Kit 
893-000-SW7	Single Head Wrench SW 7mm 	016-292-500	Rubber Pad SKID 
893-000-I25	Allen Wrench 2.5 mm 	016-292-501	PCBA Spacer SKID PTFE 
893-050-000	Holder for Probes 5-12 mm 	016-292-502	Teflon Slider 
893-090-000	Universal Probe Holder 	893-010-000	Twinadapter to 2xM6 Ball End 
893-200-130	3D Measuring-Tripod 130 mm / M6 	016-291-503	Stilt SKID 20 mm 
893-200-13V	3D Measuring-Tripod 130 mm / M6 V2A 	016-291-506	Positioning Rail SKID-S 
893-200-200	3D Measuring-Tripod 200 mm / M6 	016-291-505	Positioning Rail SKID-M 
893-200-20V	3D Measuring-Tripod 200 mm / M6 V2A 	016-291-507	Positioning Rail SKID-L 
016-291-500	Clamb Lever V2A 	-	-

This product comes with 2 years warranty.

**3D Positioners**



PMKs 3D Probe-Positioning System provides a reliable third hand to your daily testing and measuring applications. Typically used for permanent and semi-permanent setups it can be used for demonstrations as well as safe and accurate positioning in general. Especially when using a number of probes and sensors on a single DUT you don't want to miss its flexibility and simple handling on one hand and their sturdiness and fixation capabilities on the other hand. Accurate Probe-Clamping Systems like the Uniholder give the user even more room for creativity and possibilities for setting up custom test and measuring environments.

**Assembled within seconds**

The Probe-Positioning System consists of three parts: Base, positioner and probe holder. It is assembled within seconds using the 7mm wrench enclosed in the scope of delivery.

**Stepless adjustment**

PMK 3D Probe Positioners are infinitely adjustable. The mechanical clamping system makes it possible to position the probing device accurately and easily. The three joints of the 3D Probe Positioner can be fixed and released with a single turn of the tensioning knob.

**Accurate and safe positioning**

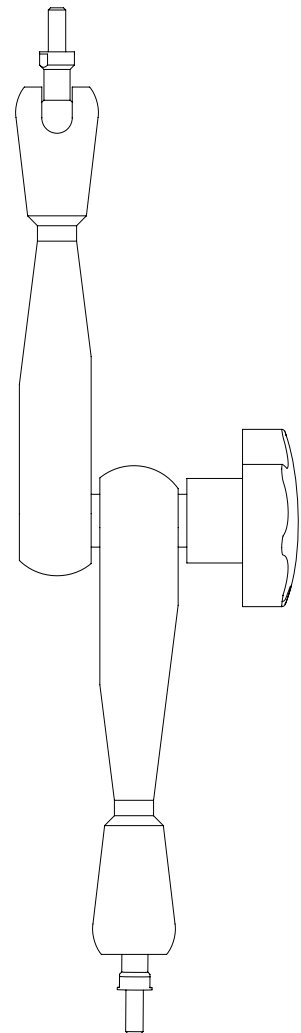
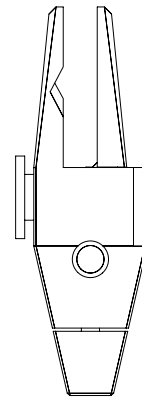
All PMK Probe positioning systems are ideal for semipermanent measurements. The setup is fast and easy offering greatest flexibility for your every day measuring tasks.

**Universal usage**

The PMK 3D Positioning System can be altered to fit different test applications. The customer may choose from four different Bases: Steel Base, Table clamp magnetic foot and vacuum cup as well as different arm lengths of 130 and 200mm. The Probe-Holders are interchangeable too. You may choose between the 3-Fold-Holder or Uniholder, which is not only capable of holding any 2.5mm and 5.0mm standard probes, but almost any measuring device up to a clamping width of 17mm. Twinholder is designed to hold 4mm Bananaplugs and similar measuring leads.


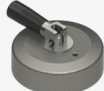













**Key Features:**

- Accurate and Safe Positioning
- 3D Stepless Clamping System
- Hands-Free Measuring and Testing



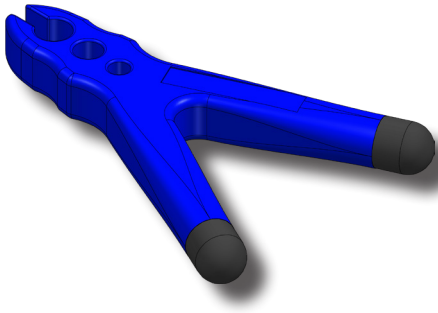
3D Positioner models

	MSA 100, 3D Measuring Tripod with Steelbase, 200 mm Span Width	MSA 130, 3D Measuring Tripod with Steelbase, 130 mm Span Width	MSB 40, 3D Measuring Tripod with Tableclamp, 200 mm Span Width	MSC 85, 3D Measuring Tripod with Vacuumbase, 200 mm Span Width
Order-Number	 893-350-001	 893-350-008	 893-350-002	 893-350-003
	MSU 1500, 3D Measuring Tripod with Steelbase, 200 mm Span Width bothsided M6 incl. Uniholder	MSM 130, 3D Measuring Tripod with Magnetfoot, 130 mm Span Width	MSM 200, 3D Measuring Tripod with Magnetfoot 200 mm Span Width	MST 200, 3D Measuring Tripod with Steelbase, 200 Span Width bothsided M6 incl. Twinholder
Order-Number	 893-350-006	 893-350-004	 893-350-005	 893-350-010

Accessories - Options					
Order No.	Item		Order No.	Item	
<b>Base Options</b>					
893-100-001	Steelbase M6 1200 g D= 100 mm		893-100-003	Vacuumbase M8 D= 85 mm	
893-100-002	Table Clamp M6 up to 40 mm		893-100-004	Magneticfoot 170N M6 D= 30 mm	
			893-100-005	Magneticfoot 300N M8 D=30 mm	
<b>Tripod Options</b>					
893-200-130	3D Measuring Tripod 130 mm / M6		893-200-200	3D Measuring Tripod 200 mm / M6	
893-200-13V	3D Measuring-Tripod 130 mm / M6 V2A		893-200-20V	3D Measuring Tripod 200 mm / M6 V2A	
<b>Clamping Options</b>					
893-200-130	3D Measuring Tripod 130 mm / M6		893-010-000	Twinadapter Accepting two M6 Threads	
893-090-000	Universal Probe Holder		893-100-004	Twinholder Accessing two 4 mm Bananaplugs	
<b>Adapter</b>					
893-100-003	Hex Wrench AF7		893-000-M16	Camera Adapter 1/4" to M6 (SW 13mm)	
893-000-M86	Thread Adapter M8/M6 SW 13 mm		-	-	-

This product comes with 2 years warranty.

**2-Footer Positioner**



**Key Features:**

- Handsfree Testing
- Anti-slip Seating

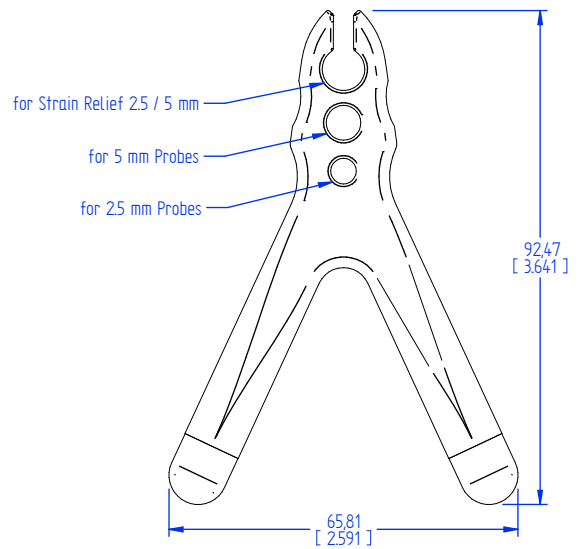
**Technical Data:**

**Order-No.:** 893-250-001  
**Weight:** 51.5g  
**Materials:** ABS, stainless steel  
**Finish:** ABS  
**Seating:** TPE  
**Color:** blue

The PMK 2-Footer Positioner is a positioner for all PMK 2.5mm and 5mm probes. Also nearly all probes of other manufacturers can be arranged with this 2-Footer Positioner.

The 2-Footer Positioner has three different sized apertures into which the probes can be put, depending on their size.

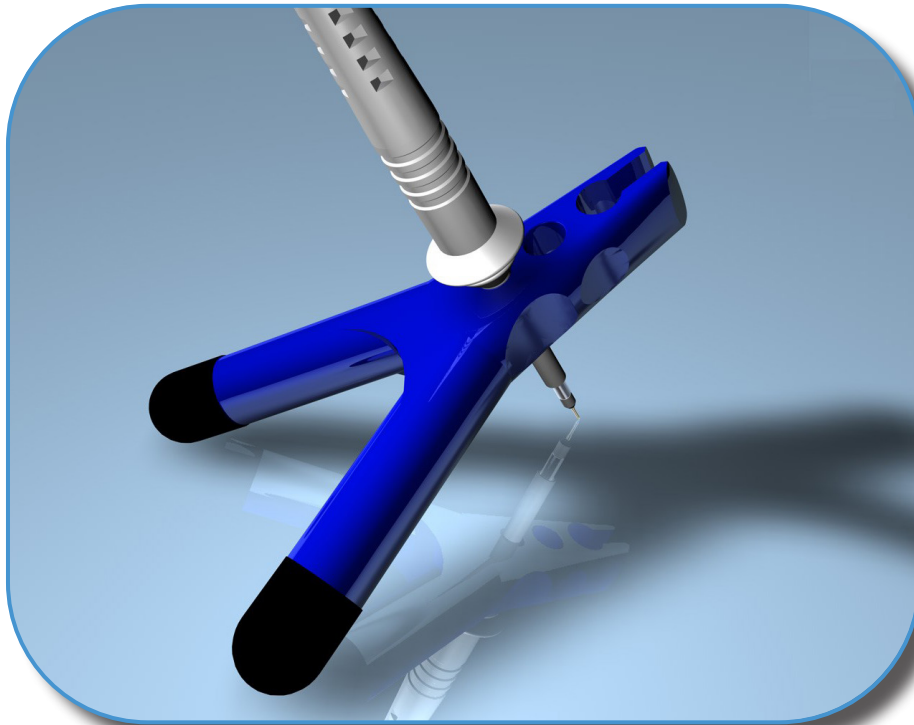
The top aperture is conical and thus ideally suitable to clamp probes at the spout.



This product comes with 2 years warranty.

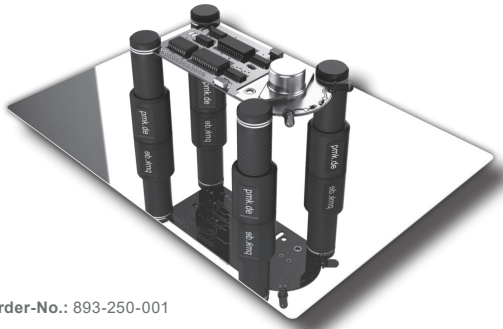
**Using**

In order to align the probe with the positionierer, the probe has to be insert into the suitable aperture of the 2-Footer Positioner and then it can be arranged at the measuring point.

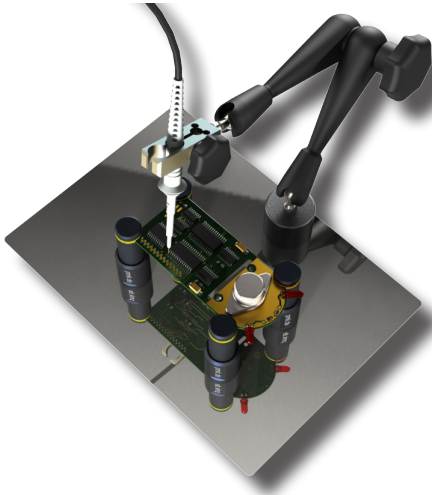




Skid'eco

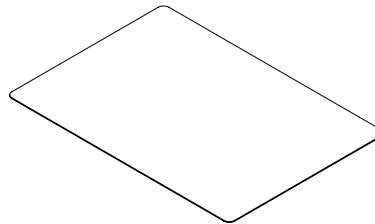


Order-No.: 893-250-001

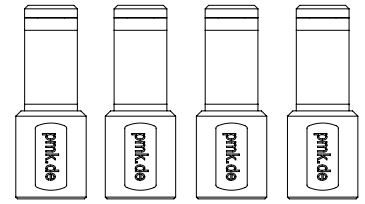


**Scope of Delivery**

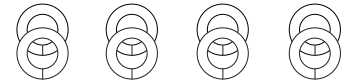
1x stainless steel base plate



4x holder



8x self-adhesive insulating washers

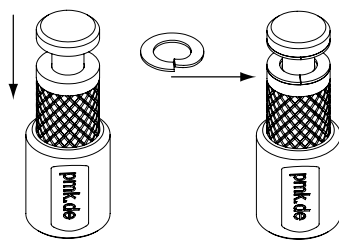


This product comes with 2 years warranty.

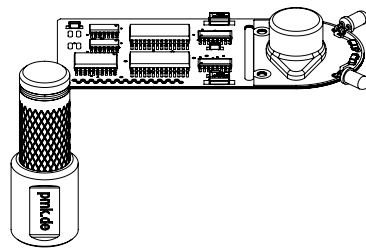
**How to use the SKID 'eco'**

1. Place the 4 magnetic holders with assembled washers onto the base plate.
2. Press the sleeve of the first holder downwards, place your PCB between the washers and release the sleeve to fix the PCB (picture 2).
3. Repeat step 2 to fix necessarily points of your PCB with the remaining holders (picture 3).

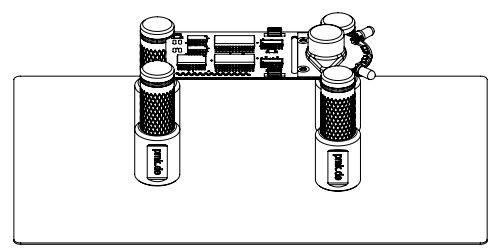
**Picture 1:**



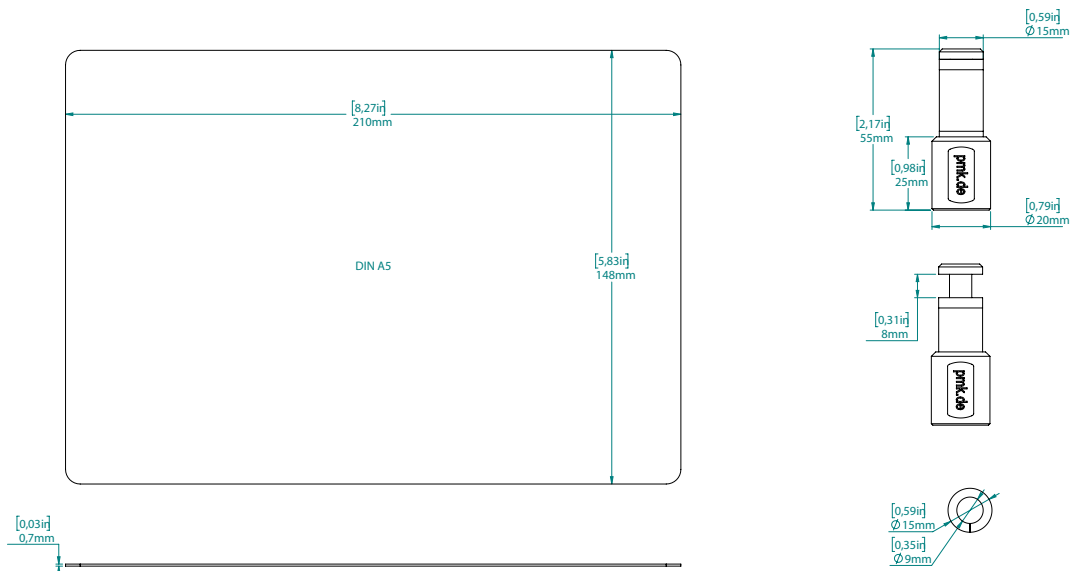
**Picture 2:**



**Picture 3:**



**Dimensions**



## **Manufacturer**

PMK Mess- und Kommunikationstechnik GmbH  
Koenigsteinerstrasse 98  
65812 Bad Soden am Taunus, Germany

Phone: +49 (0) 6196 5927 - 930  
Fax: +49 (0) 6196 5927 - 939

Internet: [www.pmk.de](http://www.pmk.de)  
E-Mail: [sales@pmk.de](mailto:sales@pmk.de)

**Copyright © 2020 PMK GmbH - All rights reserved.**

Information in this publication supersedes that in all previously published material.  
Specifications are subject to change without notice.