



HDC

TE Internal #: T3706200103-000

Circular Connector Hardware, Cable Gland, Corrosion Protected, Sealable

[View on TE.com >](#)

Connectors > Circular Connectors > Circular Connector Accessories > Circular Connector Hardware



Circular Connector Hardware Type: **Cable Gland**

Corrosion Protected: **Yes**

Sealable: **Yes**

Features

Product Type Features

Product Type	Accessory
Circular Connector Hardware Type	Cable Gland
Sealable	Yes

Body Features

Material	Metal
----------	-------

Mechanical Attachment

Screw & Hole Thread Size	M20
--------------------------	-----

Usage Conditions

Corrosion Protected	Yes
---------------------	-----

Packaging Features

Packaging Quantity	72
Packaging Method	Tray

Product Compliance

[For compliance documentation, visit the product page on TE.com>](#)



EU RoHS Directive 2011/65/EU	Compliant with Exemptions
EU ELV Directive 2000/53/EC	Not Yet Reviewed
China RoHS 2 Directive MIIT Order No 32, 2016	Restricted Materials Above Threshold
EU REACH Regulation (EC) No. 1907/2006	<p>Current ECHA Candidate List: JAN 2021 (211)</p> <p>Candidate List Declared Against: JAN 2020 (205)</p> <p>SVHC > Threshold: Pb (1.9% in Pb-Alloy in Copper)</p> <p>Article Safe Usage Statements: Do not eat, drink or smoke when using this product. Wash thoroughly after handling. Recycle if possible and dispose of the article by following all applicable governmental regulations relevant to your geographic location.</p>
Halogen Content	Not Yet Reviewed for halogen content
Solder Process Capability	Not reviewed for solder process capability

Product Compliance Disclaimer

This information is provided based on reasonable inquiry of our suppliers and represents our current actual knowledge based on the information they provided. This information is subject to change. The part numbers that TE has identified as EU RoHS compliant have a maximum concentration of 0.1% by weight in homogenous materials for lead, hexavalent chromium, mercury, PBB, PBDE, DBP, BBP, DEHP, DIBP, and 0.01% for cadmium, or qualify for an exemption to these limits as defined in the Annexes of Directive 2011/65/EU (RoHS2). Finished electrical and electronic equipment products will be CE marked as required by Directive 2011/65/EU. Components may not be CE marked. Additionally, the part numbers that TE has identified as EU ELV compliant have a maximum concentration of 0.1% by weight in homogenous materials for lead, hexavalent chromium, and mercury, and 0.01% for cadmium, or qualify for an exemption to these limits as defined in the Annexes of Directive 2000/53/EC (ELV). Regarding the REACH Regulation, the information TE provides on SVHC in articles for this part number is based on the latest European Chemicals Agency (ECHA) 'Guidance on requirements for substances in articles' posted at this URL: <https://echa.europa.eu/guidance-documents/guidance-on-reach>

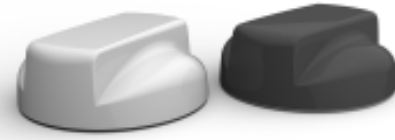
Compatible Parts



Customers Also Bought



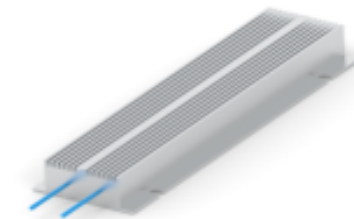
TE Part #2-1393779-4
V23101D 102A201



TE Part #1-2823595-1
LIGHT TRANSIT MIMO LTE ANTENNA



TE Part #1735104-3
PT30 XFP Connectors



TE Part #2-1623821-1
Power Wirewound Resistor: Mineral,
CFH



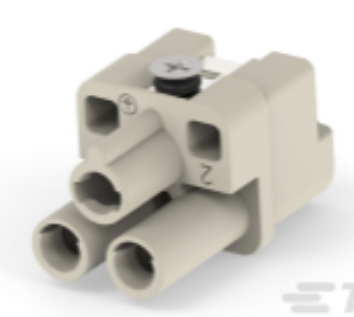
TE Part #1623787-1
Wirewound Resistor: Vertical Mount



TE Part #2198234-2
SFP+ Enhanced 1x4, SAN Heatsink, LP



TE Part #2-1618256-3
PD5B235=RELAY, VACUUM, SPST-NC



TE Part #T2080023201-000
HQ-002-PF



TE Part #2-2134533-1
LGA 2011 Hardware: ILM Assembly

Documents

Product Drawings

[DLX-20-MC \(7-12\)](#)

English

CAD Files

[3D PDF](#)

3D

Customer View Model

[ENG_CVM_CVM_T3706200103-000_A.2d_dxf.zip](#)

English

Customer View Model

[ENG_CVM_CVM_T3706200103-000_A.3d_igs.zip](#)

English

Customer View Model

[ENG_CVM_CVM_T3706200103-000_A.3d_stp.zip](#)

English

By downloading the CAD file I accept and agree to the [Terms and Conditions](#) of use.

Datasheets & Catalog Pages



HEAVY DUTY CONNECTORS

English

Product Specifications

Application Specification

English