



Product Change Notification (PCN)

PCN Number	510245	Date Issued	July 28, 2021
Reason for Change	Change Supplier		
Change Type Description	This letter is to inform you that Molex is adding a new supplier or the supplier is making a change affecting the part(s) identified in this notice. There will be no negative impact to product performance as a result of this change.		
Reason for Short Notice	Force Majeure		
Assessment of Change	Test report/Specification Test Report		
Internal Molex Qualification Date	August 30, 2021		
Sample Availability Date (Changed Part)	August 30, 2021		
Planned Implementation Date	September 13, 2021		
Method of Identifying Change	Product made after planned implementation date can contain the change		

RELEASED

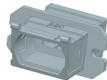
Before Change



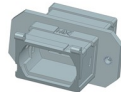
P/N: 106114-1103
MPO EM Adapter Door



P/N: 106126-0594
Metal LC DPX Receptacle (SC Footprint)



P/N: 106114-1101
MPO EM Adapter Shell Flange



P/N: 106114-1401
MPO EM Adapter Shell Flange with M2 Hole

After Change

Overview

- The purpose of this Force Majeure PCN is our current supplier is going out of business and Molex is transferring the current qualified tooling to an existing approved supplier that produces similar parts to ensure continuity of supply for part numbers list on the attached impacted parts list.
- This change will not impact fit, form, or function.
 - Current qualified tooling will be transferred to an existing approved supplier.
- Part Number Impact
 - See attached impacted parts list
- Qualification Reports and samples available upon request after the date shown above



Product Change Notification (PCN)

You may address any technical inquiries regarding this PCN by sending E-mail to pcn_coordinator@molex.com or your Local Sales Engineer.

Note: While responding, please retain "**PCN Notification:510245**" in the e-mail Subject line for faster response.

RELEASED

Molex, LLC
2222 Wellington Court
Lisle, IL 60532
TEL: 630-969-4747
www.molex.com

PCN #	Customer #	Customer Name	Search Term	Molex Part #	Customer Material #	City	State	Country	Sales Engineer Name	Sales Engineer Email-ID
510245	0000104140	AVNET EMG FINANCE--H601	AVNETEMG	000000001061141100		DALLAS	TX	US	TONY CIAPETTA	TONY.CIAPETTA@MOLEX.COM
510245	0000104140	AVNET EMG FINANCE--H601	AVNETEMG	000000001061141110		DALLAS	TX	US	TONY CIAPETTA	TONY.CIAPETTA@MOLEX.COM
510245	0000104140	AVNET EMG FINANCE--H601	AVNETEMG	000000001061141140		DALLAS	TX	US	TONY CIAPETTA	TONY.CIAPETTA@MOLEX.COM
510245	0000104140	AVNET EMG FINANCE--H601	AVNETEMG	000000001061141160		DALLAS	TX	US	TONY CIAPETTA	TONY.CIAPETTA@MOLEX.COM
510245	0000104140	AVNET EMG FINANCE--H601	AVNETEMG	000000001061141200		DALLAS	TX	US	TONY CIAPETTA	TONY.CIAPETTA@MOLEX.COM
510245	0000104140	AVNET EMG FINANCE--H601	AVNETEMG	000000001061141400	1061141400	DALLAS	TX	US	TONY CIAPETTA	TONY.CIAPETTA@MOLEX.COM
510245	0000104140	AVNET EMG FINANCE--H601	AVNETEMG	000000001061151100		DALLAS	TX	US	TONY CIAPETTA	TONY.CIAPETTA@MOLEX.COM
510245	0000104140	AVNET EMG FINANCE--H601	AVNETEMG	000000001061151106		DALLAS	TX	US	TONY CIAPETTA	TONY.CIAPETTA@MOLEX.COM
510245	0000104140	AVNET EMG FINANCE--H601	AVNETEMG	000000001061151110		DALLAS	TX	US	TONY CIAPETTA	TONY.CIAPETTA@MOLEX.COM
510245	0000104140	AVNET EMG FINANCE--H601	AVNETEMG	000000001061271590		DALLAS	TX	US	TONY CIAPETTA	TONY.CIAPETTA@MOLEX.COM
510245	0000104140	AVNET EMG FINANCE--H601	AVNETEMG	000000001061271790		DALLAS	TX	US	TONY CIAPETTA	TONY.CIAPETTA@MOLEX.COM
510245	CCC-10039	Avnet	AVNET	000000001061141100		LISLE	IL	US	TONY CIAPETTA	TONY.CIAPETTA@MOLEX.COM
510245	CCC-10039	Avnet	AVNET	000000001061141110		LISLE	IL	US	TONY CIAPETTA	TONY.CIAPETTA@MOLEX.COM
510245	CCC-10039	Avnet	AVNET	000000001061141140		LISLE	IL	US	TONY CIAPETTA	TONY.CIAPETTA@MOLEX.COM
510245	CCC-10039	Avnet	AVNET	000000001061141150		LISLE	IL	US	TONY CIAPETTA	TONY.CIAPETTA@MOLEX.COM
510245	CCC-10039	Avnet	AVNET	000000001061141160		LISLE	IL	US	TONY CIAPETTA	TONY.CIAPETTA@MOLEX.COM
510245	CCC-10039	Avnet	AVNET	000000001061141200		LISLE	IL	US	TONY CIAPETTA	TONY.CIAPETTA@MOLEX.COM
510245	CCC-10039	Avnet	AVNET	000000001061141400		LISLE	IL	US	TONY CIAPETTA	TONY.CIAPETTA@MOLEX.COM
510245	CCC-10039	Avnet	AVNET	000000001061151100		LISLE	IL	US	TONY CIAPETTA	TONY.CIAPETTA@MOLEX.COM
510245	CCC-10039	Avnet	AVNET	000000001061151106		LISLE	IL	US	TONY CIAPETTA	TONY.CIAPETTA@MOLEX.COM
510245	CCC-10039	Avnet	AVNET	000000001061151110		LISLE	IL	US	TONY CIAPETTA	TONY.CIAPETTA@MOLEX.COM
510245	CCC-10039	Avnet	AVNET	000000001061271590		LISLE	IL	US	TONY CIAPETTA	TONY.CIAPETTA@MOLEX.COM
510245	CCC-10039	Avnet	AVNET	000000001061271790		LISLE	IL	US	TONY CIAPETTA	TONY.CIAPETTA@MOLEX.COM