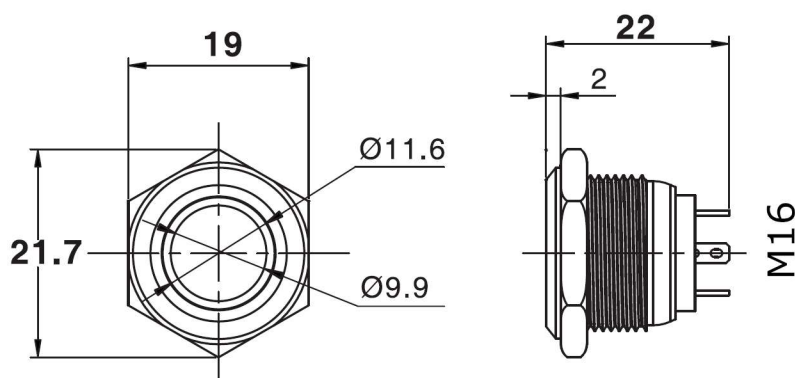
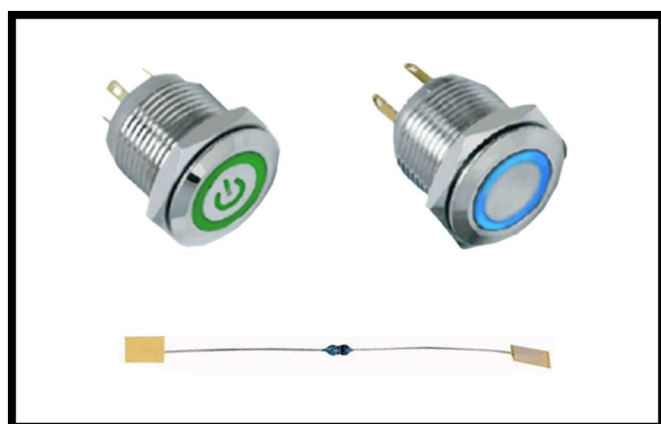


CPC # SW04838	RING	(Red LED)
SUPPLIER # RJS1N1-16L-F-R-R-BS-12V-67J		
CPC # SW04839	RING	(Green LED)
SUPPLIER # RJS1N1-16L-F-R-G-BS-12V-67J		
CPC # SW04840	RING	(Blue LED)
SUPPLIER # RJS1N1-16L-F-R-B-BS-12V-67J		
CPC # SW04842	RING	(Orange LED)
SUPPLIER # RJS1N1-16L-F-R-O-BS-12V-67J		
CPC # SW04843	POWER	(Red/Green LED)
SUPPLIER # RJS1N1-16L-F-C5-RG-BS-12V-67J		

Switch is supplied with resistor to make the LED suitable for 12V DC Use please use with the resistor or you will damage the LED



Switch Specifications

Panel Cut Out Diameter	16mm
Panel Thickness	1-6mm
Switch Function	Momentary
Circuit	1NO
The Front Shape	Flat
Terminal Type	Spade Terminals
Max. Switch Rating	2A / DC 36V
Operating Distance	2-3mm
Operating Temperature	--
Mechanical Life	1,000,000 Cycles
Electrical Life	100,000 Cycles
IP Rating	IP67