

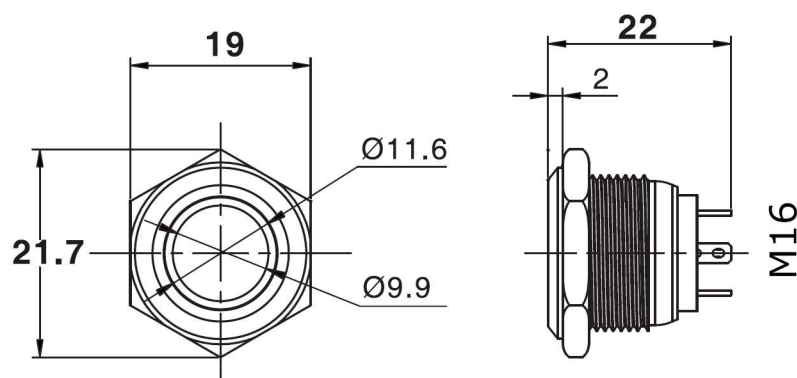
CPC # SW04844      RING      (Red LED)  
 SUPPLIER # RJS1N1-16L-F-R-R-BLK-12V-67J

CPC # SW04845      RING      (Green LED)  
 SUPPLIER # RJS1N1-16L-F-R-G-BLK-12V-67J

CPC # SW04846      RING      (Blue LED)  
 SUPPLIER # RJS1N1-16L-F-R-B-BLK-12V-67J

Switch is supplied with resistor to make the LED suitable for 12V DC Use please use with the resistor or you will damage the LED

## BLACK ANODISED ALUMINIUM FINISH



### Switch Specifications

<b>Panel Cut Out Diameter</b>	16mm
<b>Panel Thickness</b>	1-6mm
<b>Switch Function</b>	Momentary
<b>Circuit</b>	1NO
<b>The Front Shape</b>	Flat
<b>Terminal Type</b>	Spade Terminals
<b>Max. Switch Rating</b>	2A / DC 36V
<b>Operating Distance</b>	2-3mm
<b>Operating Temperature</b>	--
<b>Mechanical Life</b>	1,000,000 Cycles
<b>Electrical Life</b>	100,000 Cycles
<b>IP Rating</b>	IP67