

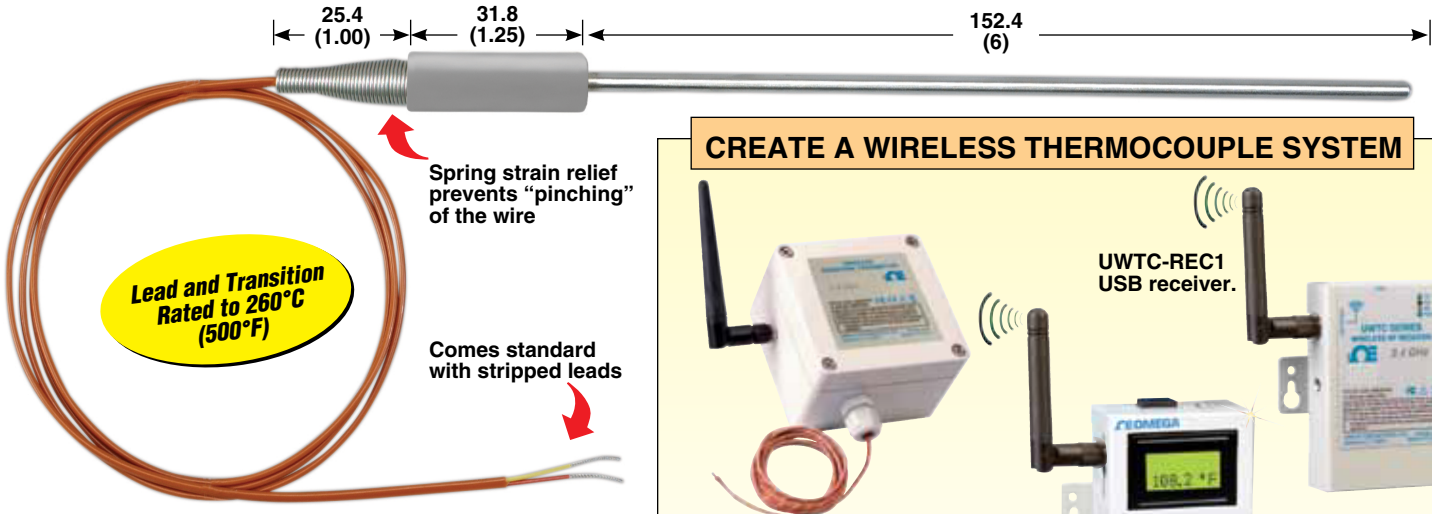
Molded Transition Joint Probes

PFA Insulated Lead Wire

Stripped Lead Termination



Dimensions: mm (in)



KTSS-18U-6 shown smaller than actual size.

Thermocouple Probes with USB Interface Available

CREATE A WIRELESS THERMOCOUPLE SYSTEM

UWTC-2-NEMA thermocouple transmitter.

UWTC-REC1 USB receiver.

UWTC-REC2-D USB receiver with analog output and display.

All models shown smaller than actual size.

Connect a thermocouple to OMEGA's UWTC-NEMA wireless transmitter and the UWTC-REC1 receiver to create a smart wireless system. Visit us online for our complete line of wireless products.

To Order				
Calibration ANSI Code	Sheath Material	Sheath Dia. mm (in)	Upper Temp Guidelines °C (°F) T/C Junction	Model No. *Specify Junction (G)rounded, (E)xposed, or (U)ngrounded. **Probe Length 150 mm (6"), 300 mm (12"), 450 mm (18") in Stock
K CHROMEGA®-ALOMEGA®	304 SS	1.59 (1/16)	899 (1650)	KTSS-116(*)-(**)
	304 SS	3.18 (1/8)	899 (1650)	KTSS-18(*)-(**)
	304 SS	4.78 (3/16)	899 (1650)	KTSS-316(*)-(**)
	304 SS	6.35 (1/4)	899 (1650)	KTSS-14(*)-(**)
	INC 600	1.59 (1/16)	921 (1690)	KTIN-116(*)-(**)
	INC 600	3.18 (1/8)	1071 (1960)	KTIN-18(*)-(**)
	INC 600	4.78 (3/16)	1149 (2100)	KTIN-316(*)-(**)
	INC 600	6.35 (1/4)	1149 (2100)	KTIN-14(*)-(**)
	XL	1.59 (1/16)	1038 (1900)	KTXL-116(*)-(**)
	XL	3.18 (1/8)	1149 (2100)	KTXL-18(*)-(**)
J IRON-CONSTANTAN	304 SS	1.59 (1/16)	441 (825)	JTSS-116(*)-(**)
	304 SS	3.18 (1/8)	521 (970)	JTSS-18(*)-(**)
	304 SS	4.78 (3/16)	621 (1150)	JTSS-316(*)-(**)
	304 SS	6.35 (1/4)	721 (1330)	JTSS-14(*)-(**)
T COPPER-CONSTANTAN	304 SS	1.59 (1/16)	260 (500)	TTSS-116(*)-(**)
	304 SS	3.18 (1/8)	316 (600)	TTSS-18(*)-(**)
	304 SS	4.78 (3/16)	371 (700)	TTSS-316(*)-(**)
	304 SS	6.35 (1/4)	371 (700)	TTSS-14(*)-(**)

12" Probes Available for the Same Price!

Ordering Example: KTSS-18U-12, molded transition joint probe, 1000 mm (40") PFA lead wire, Type K, 304 SS sheath, 3.18 mm (1/8") Dia. probe, ungrounded hot-end thermocouple junction, 300 mm (12") sheath length, stripped-leads cold-end termination.