

0805 SMD Bi-Colour Chip LED

Red / Green

multicompPRO

**RoHS
Compliant**

Specifications

Dice material	: InGaN/Sapphire / AlInGaP
Emmiting Colour	: Red / Green
Lens colour	: Water Clear
Viewing angle	: 120°
Dominant Wavelength	: 635nm / 575nm
Luminous Intensity	: 240mcd / 80mcd

Absolute Maximum Ratings at Ta=25°C

Parameter	Symbol	Rating		Unit
		R	G	
Power Dissipation	PD	44	44	mW
D.C Forward current	If	20		V
Reverse Voltage	Vr	5		mA
Operating Temperature	Top	-40 to +85		°C
Storage Temperature	Tstg.	-40 to +100		°C
Peak Pulsing Current (1/8 Duty f=1kHz)	Ifp	100		mA
Electrostatic Discharge	ESD	1000 (HBM)		V

Electrical and Optical Characteristics

Parameter	Symbol	Colour	Condition	Value			Unit
Luminous Intensity	Iv	R	If=20mA	130		240	mcd
		G		30		80	
Forward Voltage	Vf	R	If=20mA	1.75		2.35	V
		G		1.75		2.35	
Dominant Wavelength	λ_d	R	If=20mA	620		635	nm
		G		566		575	
Reverse Current	Ir		Vr=5V			1	μA
Viewing Angle at 50% Iv	2θ1/2		If=10mA		120		deg

Notes:

1. Tolerance of Luminous Intensity is ±10%
2. Tolerance of Forward Voltage is ±0.5V
3. Tolerance of Dominant Wavelength is ±1nm

Newark.com/multicomp-pro
Farnell.com/multicomp-pro
Element14.com/multicomp-pro

multicompPRO

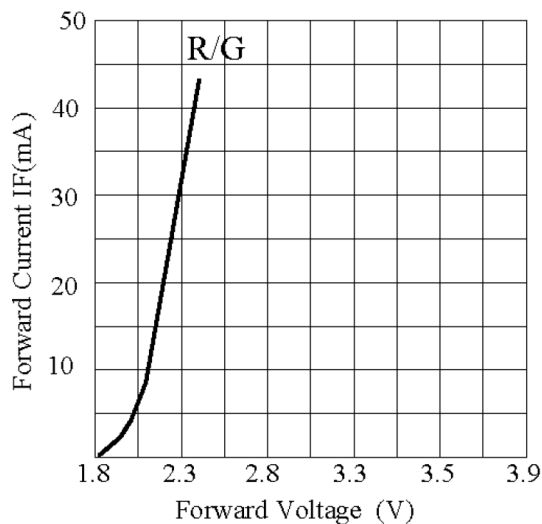
0805 SMD Bi-Colour Chip LED

Red / Green

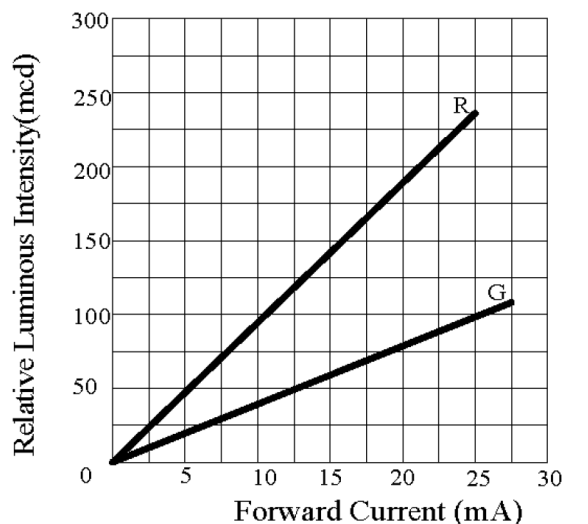
multicompPRO

Typical Electrical/Optical Characteristic Curves

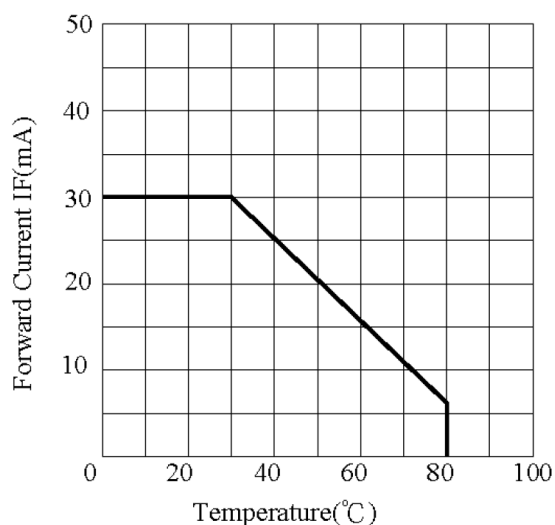
(25°C Ambient Temperature Unless Otherwise Noted)



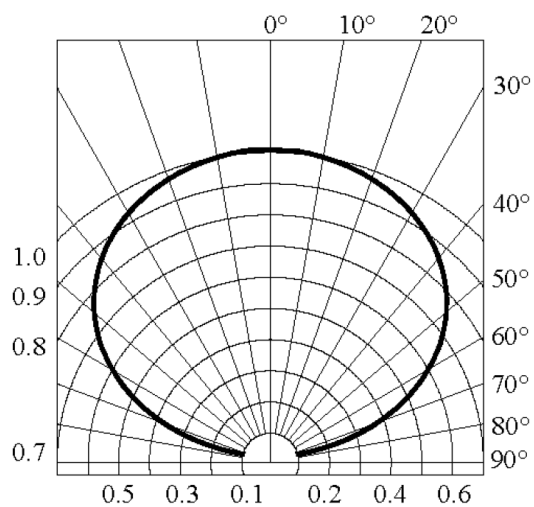
FORWARD CURRENT VS. APPLIED VOLTAGE



RELATIVE INTENSITY VS. FORWARD CURRENT



FORWARD CURRENT VS. AMBIENT TEMPERATURE



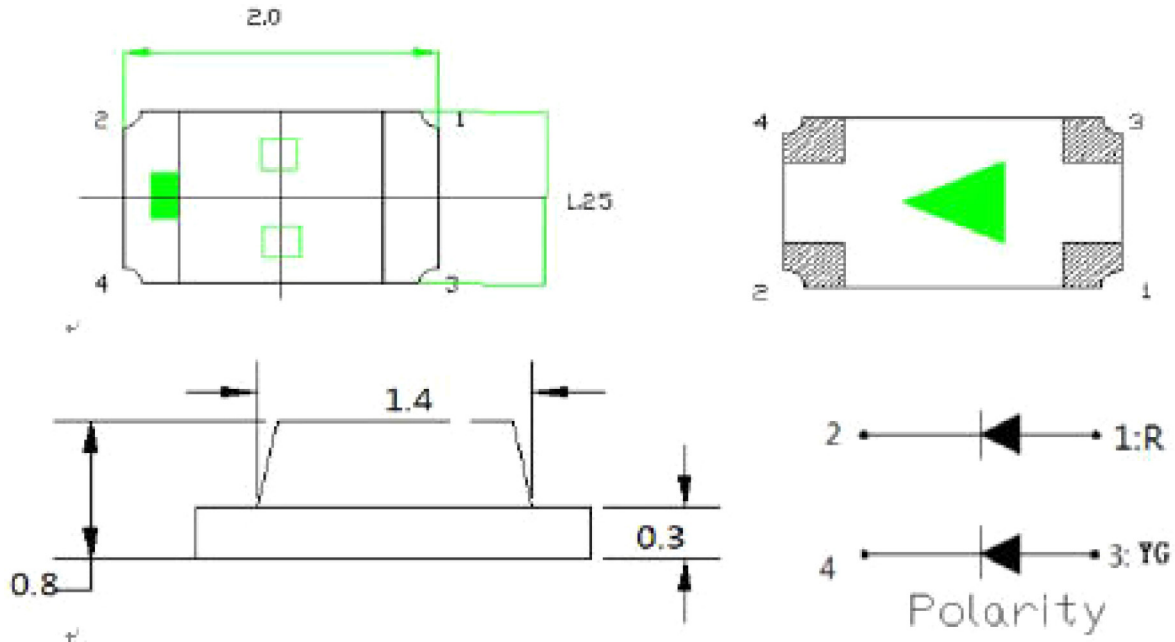
Radiation Diagram

0805 SMD Bi-Colour Chip LED

Red / Green

multicompPRO

Dimensions



Tolerance is ± 0.2 mm unless otherwise noted.

Dimensions : Millimetres

Precautions in use:

Storage

It is recommended to store the products in the following conditions:

1. Do not open the moisture proof bag before ready to use the LEDs
2. The LEDs should be kept at 30°C or less and 60%RH or less before opening the package. The max. storage period before opening the package is 1 year.
3. After opening the package, the LEDs should be kept at 30°C/40%RH or less, and it should be used within 7 days
4. If the LEDs have exceeded the storage time, baking should be performed using the following conditions.

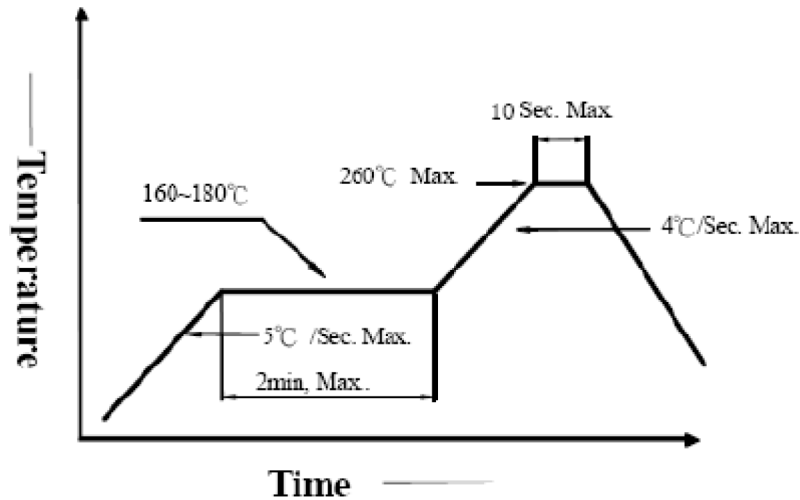
Baking condition: 60 \pm 5°C for 24 hours

0805 SMD Bi-Colour Chip LED

Red / Green

multicompPRO

Reflow Temp/Time:



Notes:

1. Reflow soldering should not be done more than two times.
2. Do not put stress on the LEDs when soldering.
3. Do not warp the circuit board before it have been returned to normal ambient conditions after soldering.

Part Number Table

Description	Part Number
Chip LED, Red/Geen, 635/575nm, 120°, 240/80mcd, Surface Mount	MP008260

Important Notice : This data sheet and its contents (the "Information") belong to the members of the AVNET group of companies (the "Group") or are licensed to it. No licence is granted for the use of it other than for information purposes in connection with the products to which it relates. No licence of any intellectual property rights is granted. The Information is subject to change without notice and replaces all data sheets previously supplied. The Information supplied is believed to be accurate but the Group assumes no responsibility for its accuracy or completeness, any error in or omission from it or for any use made of it. Users of this data sheet should check for themselves the Information and the suitability of the products for their purpose and not make any assumptions based on information included or omitted. Liability for loss or damage resulting from any reliance on the Information or use of it (including liability resulting from negligence or where the Group was aware of the possibility of such loss or damage arising) is excluded. This will not operate to limit or restrict the Group's liability for death or personal injury resulting from its negligence. Multicomp Pro is the registered trademark of Premier Farnell Limited 2019.

Newark.com/multicomp-pro
Farnell.com/multicomp-pro
Element14.com/multicomp-pro

multicompPRO