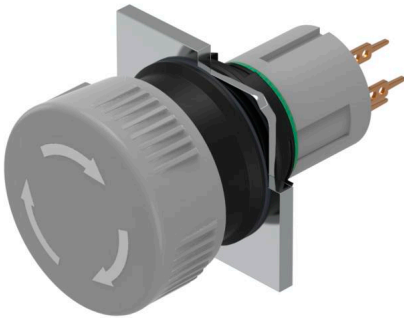


EAO – Your Expert Partner for Human Machine Interfaces

51-252.0268 - Stop switch - Actuator

51-252.0268 - Stop switch - Actuator



Attention: The preview is based on a sample product. This can differ from your current configuration.

Attribute

Design	raised
Front dimension	Ø 24,5 mm
Front form	round
IP front protection	IP65
Contacts	2 NC
Contact material	Gold
Lens colour	Grey
Lens illumination	non illuminative
Lens material	Plastic
Lens optics	opaque
Lens shape	mushroom-head
Switching action	Maintained
Switching system	Low-level element
Switching voltage	42 V
Terminal	Universal terminal
Weight	0.011 kg

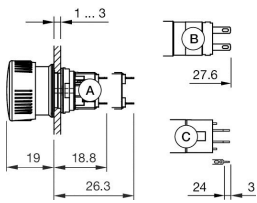
Function

Stop switch

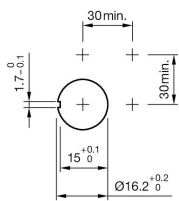
EAO – Your Expert Partner for Human Machine Interfaces

51-252.0268 - Stop switch - Actuator

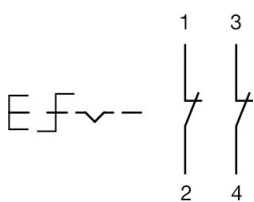
Dimensions



Mounting cut-outs



Wiring diagrams



Additional information

Marking arrows

Contacts: NC = Normally closed, NO = Normally open

Marking arrows

Contacts: NC = Normally closed, NO = Normally open