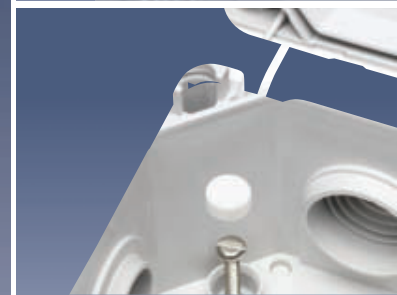


# Junction Boxes

## HP 70 to HP 190

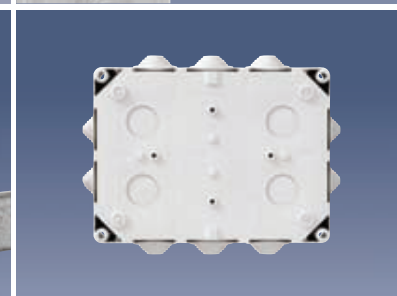
### IP 55



#### Overview of the characteristics of this HP series

Use	Weak acid	Strong acid	Weak alkali	Strong alkali	Alcohol	Benzin	Benzene	Mineral oil	Diesel	Ammonia	Vegetable oil	Animal oil	Free of halogen, heavy metal, PVC and silicone
HP-Enclosures	●	▶	●	▶	●	▶	▶	●	▶	●	●	●	yes

- = resistant
- ▶ = partially-resistant
- ⊗ = not-resistant



- 6 sizes
- Assembly on wood or other inflammable materials
- Assembled stepped nipple
- Connection diameter 1.5 mm<sup>2</sup> to 10 mm<sup>2</sup>
- Entry positions also suitable for metric add-on accessories 2 to 10 mm<sup>2</sup>

#### Suitable for the installation

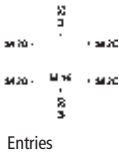
- In damp and wet areas and rooms
- In buildings where there are crowds of people
- In temporary buildings, vehicles and caravans

## HP 70

75 x 75 x 42 mm  
Interior dimensions:  
68 x 68 x 38 mm



IP 55



Entries

### Description

Junction box according to E DIN IEC 60998-2-5,  $U_i=400$  V, 3 recessed stepped nipples, and 2 loose ones enclosed, seal range 5 to 16 mm, for terminals up to 2.5 mm<sup>2</sup>

Order No. Packing Qty

**HP 70 - L**  
grey, without terminals

320 970 01

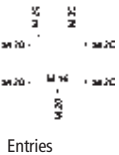
60/1

## HP 80

85 x 85 x 42 mm  
Interior dimensions:  
78 x 78 x 38 mm



IP 55



Entries

Junction box according to E DIN IEC 60998-2-5,  $U_i=400$  V, 7 recessed stepped nipples, seal range 5 to 16 mm, for terminals up to 2.5 mm<sup>2</sup>

**HP 80 - L**  
grey, without terminals

322 980 01

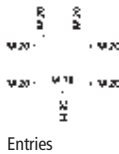
50/1

## HP 90

90 x 90 x 45 mm  
Interior dimensions:  
82 x 82 x 38 mm



IP 55



Entries

Junction box according to E DIN IEC 60998-2-5,  $U_i=400$  V, 7 recessed stepped nipples, seal range 5 to 16 mm, for terminals up to 4 mm<sup>2</sup>

**HP 90 - L**  
grey, without terminals

325 990 01

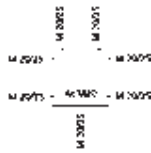
40/1

## HP 100

113 x 113 x 58 mm  
Interior dimensions:  
103.5 x 103.5 x 32 mm



IP 55



Entries

Junction box according to E DIN IEC 60998-2-5,  $U_i=690$  V, 7 recessed stepped nipples, seal range 5 to 21 mm, for terminals up to 10 mm<sup>2</sup>

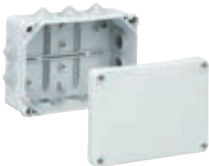
**HP 100 - L**  
grey, without terminals

326 900 01

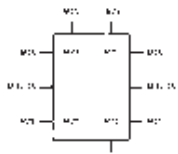
20/1

## HP 150

164 x 119 x 77 mm  
Interior dimensions:  
155 x 110 x 70 mm



IP 55



Entries

Junction box  $U_i=690$  V, 10 recessed stepped nipples, seal range 5 to 21 mm

**HP 150 - L**  
grey, without terminals

326 950 01

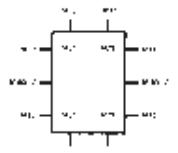
12/1

## HP 190

199 x 149 x 77 mm  
Interior dimensions:  
190 x 140 x 70 mm



IP 55



Entries

Junction box  $U_i=690$  V, 10 recessed stepped nipples, seal range 13 to 26.5 mm

**HP 190 - L**  
grey, without terminals

326 990 01

8/1