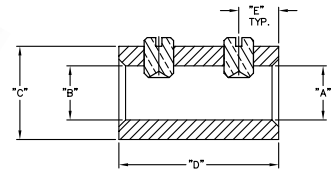


## SHAFT COUPLERS

PART NO.	ID	ID	OD	LG	# SCREWS	E
	A	B	C	D		
<b>BRASS COUPLER -- NICKEL PLATED</b>						
120	0.25	0.25	0.438	0.75	2	3/16
131		0.375	0.5			
<b>MINI. COUPLER -- BRASS-NICKEL PLATED</b>						
180	0.125	0.125	0.281	0.375	4	5/64



Shaft Couplers

## SHAFT LOCKS

PART NO.	FIG.	FOR SHAFT SIZE	DIMENSIONS				THREAD SIZE
			A	B	C	D	
<b>Bushing Mount</b>							
181	A	1/4	.253	1/2	1/2	7/16	3/8-32
182	B			1/2		1	
183	C	1/8	.128	9/16	11/32	5/16	
<b>Panel Mount</b>							
114	C	1/4	.253	1/2	7/16	7/16	3/8-32

All shaft accessories shown on this page are machined from brass and nickel plated.



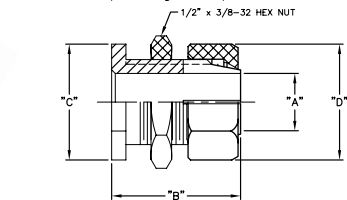
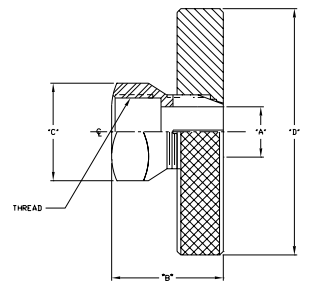
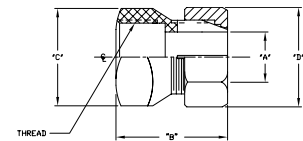
A



B



C



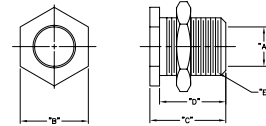
Shaft Locks

## PANEL BEARINGS

PART NO.	FOR SHAFT SIZE	DIMENSIONS				
		A I.D.	B HEX	C LGTH.	D BODY	E THD.
184	1/8" Mini.	.128	11/32	7/16	3/8	1/4-32
119	1/4"	.253	7/16	1/2	7/16	3/8-32



Panel Bearings

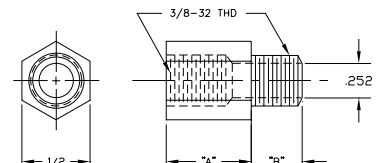


## BUSHING EXTENDERS

PART NO.	BODY LENGTH (A)	THREAD LENGTH (B)
2350	5/8	3/16
2351	5/8	1/4
2352	5/8	3/8
2353	11/16	3/8
2354	11/16	1/2
2355	3/4	1/4



Bushing Extenders



Shaft Accessories