

CERAMIC-INSULATED STRIP HEATERS

HCS Series



HCS-055-120V shown actual size.

APPLICATIONS

- ✓ Dies
- ✓ Molds
- ✓ Plastic Forming and Sealing
- ✓ Tank and Kettle Heating

(For specific applications, correctly rated elements should be used to prevent overheating and to ensure long life)

FEATURES

The HCS Series stainless steel strip heaters provide clean, dependable heat with sheath temperatures up to 649°C (1200°F) and watt densities up to 40 W per square inch. Because of the seamless stainless steel sheath, these ceramic-insulated strip heaters are dimensionally stable in milled slots.

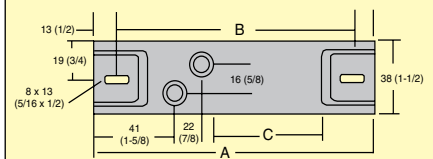
Formula for Determination of Watt Density

$$\text{Watts/sq. in.} = \frac{\text{Total unit wattage}}{C \text{ (heated length)} \times 3}$$

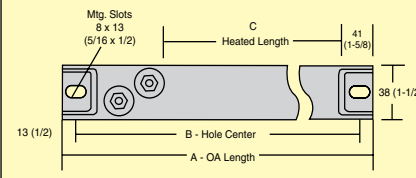
Standard Termination

Offset at one end

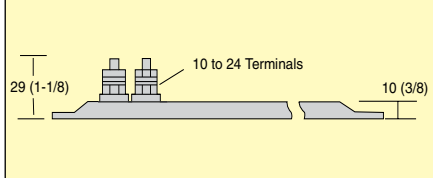
Dimensions: mm (inch)



Dimensions: mm (inch)



Dimensions: mm (inch)



CONSTRUCTION

1. Seamless stainless steel sheath
2. Post terminals
3. Ceramic element support
4. Element wire situated close to outside surface for maximum heat transfer and minimum internal temperature while preserving good dielectric qualities
5. Magnesium oxide packing

Tolerances

Width: 1.500" ±0.010"

Length:

Up to 24": ±1/16"

24" and Over: ±1/8"

Thickness: 0.375" ±0.005"

Wattage Tolerances:

-10 to 5% at rated voltage

To Order

| Model No. | Description | Watts | Dimensions: mm (inch) | | |
|--------------|--------------|-------|-----------------------|-------------|-------------|
| | | | A | B | C |
| HCS-055-120V | Strip heater | 150 | 140 (5.5) | 114 (4.5) | 25.4 (1) |
| HCS-055-240V | Strip heater | 150 | 140 (5.5) | 114 (4.5) | 25.4 (1) |
| HCS-080-120V | Strip heater | 250 | 203 (8) | 178 (7) | 70 (2.75) |
| HCS-080-240V | Strip heater | 250 | 203 (8) | 178 (7) | 70 (2.75) |
| HCS-081-120V | Strip heater | 330 | 203 (8) | 178 (7) | 70 (2.75) |
| HCS-081-240V | Strip heater | 330 | 203 (8) | 178 (7) | 70 (2.75) |
| HCS-105-120V | Strip heater | 300 | 267 (10.5) | 241 (9.5) | 133 (5.25) |
| HCS-105-240V | Strip heater | 300 | 267 (10.5) | 241 (9.5) | 133 (5.25) |
| HCS-120-120V | Strip heater | 500 | 305 (12) | 279 (11) | 184 (7.25) |
| HCS-120-240V | Strip heater | 500 | 305 (12) | 279 (11) | 184 (7.25) |
| HCS-121-120V | Strip heater | 750 | 305 (12) | 279 (11) | 184 (7.25) |
| HCS-121-240V | Strip heater | 750 | 305 (12) | 279 (11) | 184 (7.25) |
| HCS-152-120V | Strip heater | 500 | 387 (15.25) | 362 (14.25) | 254 (10) |
| HCS-152-240V | Strip heater | 500 | 387 (15.25) | 362 (14.25) | 254 (10) |
| HCS-180-120V | Strip heater | 750 | 457 (18) | 432 (17) | 324 (12.75) |
| HCS-180-240V | Strip heater | 750 | 457 (18) | 432 (17) | 324 (12.75) |
| HCS-181-120V | Strip heater | 1250 | 457 (18) | 432 (17) | 324 (12.75) |
| HCS-181-240V | Strip heater | 1250 | 457 (18) | 432 (17) | 324 (12.75) |
| HCS-237-240V | Strip heater | 1000 | 603 (23.75) | 578 (22.75) | 470 (18.5) |
| HCS-300-240V | Strip heater | 2000 | 762 (30) | 737 (29) | 629 (24.75) |
| HCS-357-240V | Strip heater | 2500 | 908 (35.75) | 883 (34.75) | 775 (30.5) |

Comes complete with operator's manual.

Ordering Examples: HCS-080-120V, strip heater, 250 W.

HCS-180-120V, strip heater, 750 W.