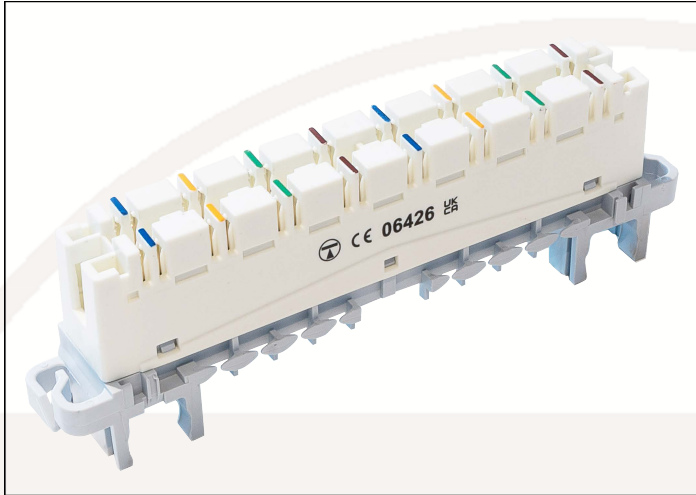


## **CONNECT5+ 8 pair consolidation module**



### **CONNECT5+ 8 pair consolidation module(F23)**

The CONNECT5+ is an 8 pair disconnection module suitable for use as part of a Category 5e consolidation point, using LSA+ type mounting frames or 95mm Profil-type rods. Each module can join 2 standard cables.

#### **: YUñ fYg'**

- Fully compliant with Category 5e performance requirements for a consolidation point
- Fully compatible with industry standard back mount frames, 19" subracks, label holders, connection boxes and insertion tools
- Tried and tested industry standard LSA+ type contacts
- Suitable for use with POE+
- Disconnection facility allows lines to be disconnected temporarily for testing
- Silver-plated contacts maintain electrical performance even after re-termination

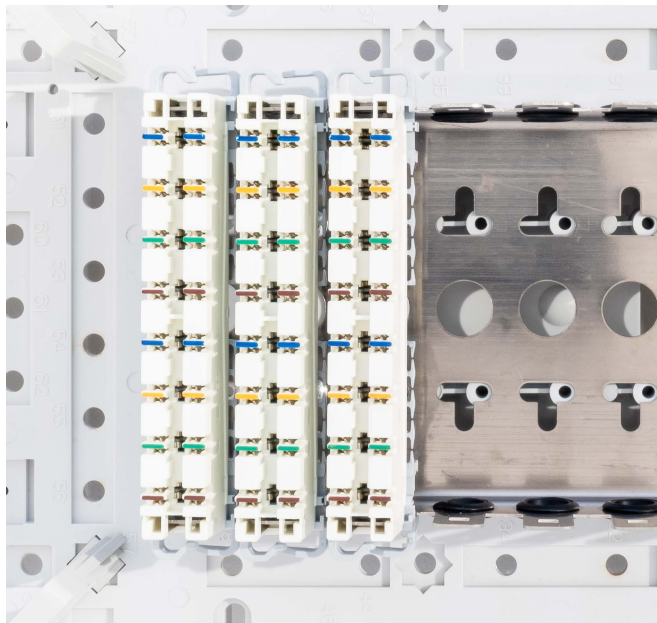
#### **GdYVZVUñcbg'**

- Net weight: 46g approx
- Dimensions: 122mm x 18mm x 43mm (in primary packing)
- Colour: white housing with grey base

#### **AUñfjUg'**

- Housing: PBT (Flame retardancy satisfies UL94V-0)
- Contacts: Silver-plated Phosphor Bronze
- Copper conductor diameter: 0.40 to 0.65mm
- Insulation resistance:  $\geq 1G\Omega$
- Contact resistance (in connection points):  $\leq 10m\Omega$

**Illustrative images:**



Example of installation in connection box



Example of sub-rack mounting