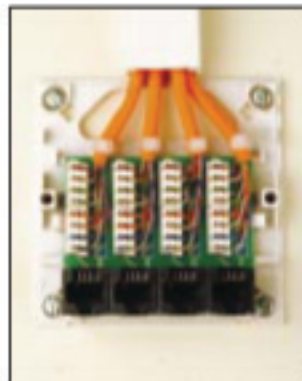


4000 Series Shuttered Outlet

SPECIFICATION

WIDTH	87mm
DEPTH	27mm
HEIGHT	87mm
SPACER PLATE DEPTH	8mm
MATERIAL	ABS thermoplastic resin, with grade UL94 VO at 1.5mm flame retardancy
FINISH	High Gloss
IDC BLOCKS	4 Way Industry Standard IDC blocks
PCB	1.6mm double sided PTH Boards
CONFORMS TO	4015: TIA/EIA-568-B.2-1 Category 6 Specification 4010: TIA/EIA-568-B Enhanced Category 5 Specification

SIMPLE ASSEMBLY SEQUENCE



WHAT IS CATEGORY 6 ?

Category 6 is a specification for data cabling systems to support data transmission at very high speeds, offering a bandwidth of 250MHz. It provides an excellent platform for gigabit ethernet (which uses complex encoding techniques to limit the required bandwidth to 100MHz) but also caters for future high speed data transmission protocols using less expensive encoding schemes.

ORDERING INFORMATION

Product Description

4010 Enhanced Cat 5, 4 Way Shuttered Outlet

Part Number

5505