

 **LLOYTRON<sup>®</sup>**

---

**OPERATING INSTRUCTIONS**

---

# **DAB+/FM**

# **Portable Radio**



---

**MODEL: N5401**

---

# thank you

Thank you for the purchase of this quality **LLOYTRON** product. Used carefully and in accordance with the instructions enclosed, it should give you trouble free service over a long period of time. Please keep these instructions for future reference.

---

## FEATURES

---

- Wavebands: FM or DAB+
- Listen to your favourite digital radio stations with DAB+
- Digital LCD Screen
- Connect using Bluetooth 4.2 to stream music from phone or music providers
- MP3 music playback using USB or MicroSD card
- Full Bluetooth and MP3 control allows playback, pause, next song, previous song
- AUX input for external device input
- Headphone socket
- Alarm Clock, wake to FM, DAB or Buzzer
- RMS Output: 2x2w
- Battery Source: 4x C sized batteries (not supplied)
- Low power DC Adaptor Operated: 6v DC 1000mA (adaptor supplied)

---

## SPECIFICATIONS

---

### ■ GENERAL

Power Requirement.....	DC 6V 1A
Battery Requirement.....	UM-2 / C x 4pcs
Dimensions.....	Approx.215 mm(L)x60mm(W)x155mm(H)
Operation temperature.....	+5°C - +35°C

### ■ RECEIVER SECTION

Receiving Bands.....	FM/DAB+
Tuning Range.....	FM: 87.5-108MHz and DAB+: 168-240MHz
FM Radio presets.....	20

### ■ AUDIO SECTION

Output Power.....	Maximum 2 Watt x 2
Headphone Impedance .....	4 ~ 32 Ohms



---

# IMPORTANT SAFEGUARDS AND PRECAUTIONS

---

## SAVE THESE INSTRUCTIONS

- Read all instructions carefully
- For Household Use only.
- Only for use indoors.

### DO NOT

Do not use outside or in damp conditions.

- Keep away from hot surfaces, such as gas or electric hobs and ovens etc

### DO NOT

Do not use for any purposes other than the appliances intended use.

### DO NOT

Do not use if any part of this appliance is damaged in any way.

- To prevent against the risk of electric shock, do not submerge any part of this appliance in water, unless advised in this manual.
- This appliance should only be used on a flat surface.
- This appliance is not intended for use by persons with reduced physical, sensory or mental capabilities, or lack of experience and knowledge, unless they have been given supervision or instruction concerning use of the appliance, by a person responsible for their safety.



**To prevent possible hearing damage, do not listen at high volume levels for long periods.**

- Children should be supervised to ensure they do not play with this appliance.
- Cleaning and user maintenance shall not be made by children.
- Never let children push anything into holes or slots in the cabinet or casing – this could result in an electric shock.
- Do not use rechargeable batteries in this appliance.

### DO NOT

Do not mix old and new batteries, different types of batteries, alkaline or rechargeable batteries with different capacity together – they may leak.

- Always turn the unit off, when not in use. Leaving it on will shorten the life of the batteries.
- If you plan not to use the unit for a length of time, remove the batteries. Old batteries can leak and cause corrosion, damaging the unit.
- Should you find the sensitivity or quality of sound deteriorating, replace all old batteries with new ones as soon as possible.
- The use of long life alkaline batteries is recommended.
- DON'T throw the battery in fire or dispose of in household waste. Consult your local authority in the correct way to dispose of unwanted batteries.
- DON'T short-circuit the supply terminals of the batteries.
- Always check the correct polarity when inserting batteries. Incorrect polarity can damage this unit.



---

# LOCATION OF CONTROLS

---



## FRONT, SIDE & REAR VIEW

- A. FM Volume
- B. DAB + FM Antenna
- C. Battery Compartment
- D. Power Socket

- E. SD Card Slot
- F. USB Port
- G. Headphone Jack
- H. AUX IN Jack





**CONTROL PANEL**

- A. Power/Func/Alarm Off
- B. Menu
- C. Info
- D. Memory/Repeat
- E. LED Display

- F. Volume Button
- G. Snooze
- H. Play/Pause/Time/Enter
- I. Stop/Sleep
- J. CLK + / Next
- K. CLK - / Back

	<b>BUTTON</b>	<b>FUNCTION</b>
A	<b>POWER FUNCTION ALARM OFF</b>	In standby mode, press to turn radio on. Press to change modes between DAB/FM/BT/USB/CARD/AUX modes. Press to turn alarm off when it sounds.
B	<b>MENU</b>	Press to Select menu settings.
C	<b>INFO</b>	Press for information.
D	<b>MEMORY/REP</b>	Press to store radio station. Press to repeat a track on USB or SD mode.
E	<b>LED DISPLAY</b>	
F	<b>VOLUME +/-</b>	Press the VOL +/- button to adjust the volume.
G	<b>SNOOZE</b>	Press to snooze alarm.
H	<b>PLAY/PAUSE TIME ENTER</b>	Press to play and pause playback. Press to enter clock setting and alarm setting modes. Press to confirm a selection.
I	<b>STOP/SLEEP</b>	Press to stop playback Press and hold to enter sleep mode
J	<b>CLK +/NEXT</b>	Press to go forward when setting the time. Press to skip forward on USB/SD modes. Press to scan forward in radio mode.
K	<b>CLK-/BACK</b>	Press to go back when setting the time. Press to skip back on USB/SD modes. Press to scan backward in radio mode.

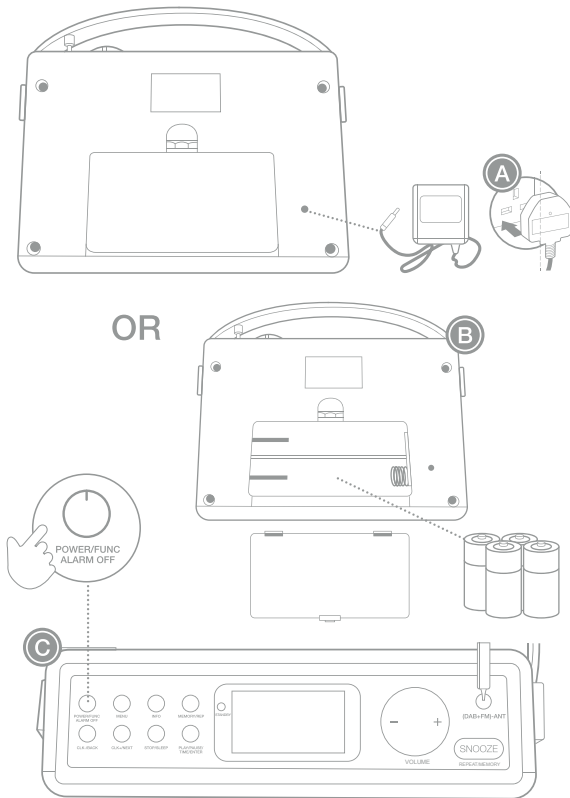


---

# QUICK SETUP

---

## ■ GETTING STARTED



---

# POWERING ON

---

The radio can be powered from batteries or using an adaptor.  
Press the power button to turn on.

## ■ BATTERIES

Open the battery compartment located at the back of the radio and place 4 x 1.5V / C batteries making sure that they are the correct way round. Close the battery compartment.

## ■ POWER ADAPTOR

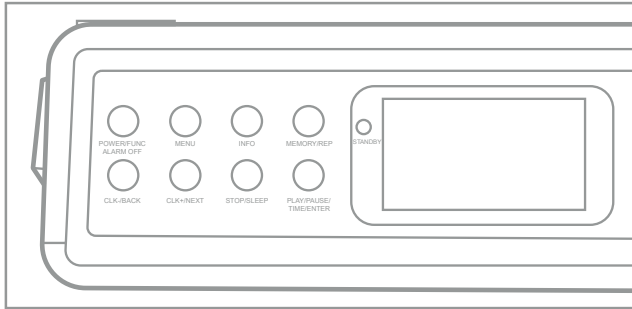
Insert one end of the power adaptor into the DC jack on the back of the radio. Plug the other end of the adaptor in at the mains and turn it on. To switch off completely, unplug the power cord from the wall outlet.



---

# FEATURE

---



## ■ DAB RADIO

1. Press the DAB/FM button until DAB shows on the display.
2. Press ENTER to automatically scan all channels.
3. Press the CLK+/NEXT or CLK-/BACK button to search through the station list, and press ENTER to select station.

## ■ FM RADIO

1. Press the DAB/FM button until FM shows on the display.
2. Extend the antenna fully.
3. Press ENTER to automatically scan all channels.
4. The radio will scan for the next or last available frequency.
5. To manually scan, press the CLK+/NEXT or CLK-/BACK button repeatedly until you find the required frequency.

## ■ INFO

DAB information modes are shown on the LED display.  
Press the INFO Key to see the available modes.

1. DLS (Dynamic Link Segment): displays rolling text which may show the artist, track name, program details etc.
2. Signal Strength: displays the signal strength of the current station.
3. Program Type: displays the type of station content being broadcast.



4. Ensemble name: displays the name of the multiplex to which the current DAB station belongs.
5. Frequency and Channel: displays the current channel and frequency.
6. Signal Error.
7. Bitrate and Audio Status: displays the data rate in kilo bites per second and the audio mode.
8. Time/Date: displays the current time and date.

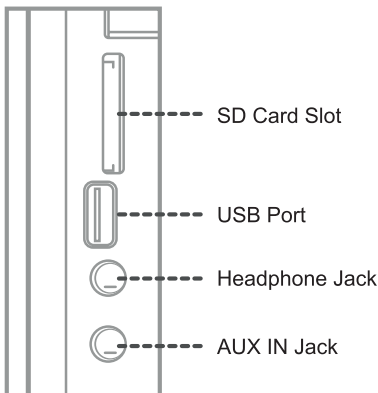
FM Information modes are shown on the LED display.  
Press the INFO button to see available modes.

1. PTY (Program Type): displays the type of station content being broadcast.
2. Signal Strength: displays the signal strength of the current station.
3. Station Frequency: displays the frequency of the current station.
4. Radio text: displays rolling text which may show the artist, track name, program details etc.

#### ■ RADIO PRE-SET TUNING

Up to 20 radio stations can be programmed.

1. Select the radio station you wish to store.
2. Press the Memory /REP button.
3. The screen will show 'Preset Store'. Use the CLK-/BACK and CLK+/NEXT buttons to select a preset number to store the station.
4. Press ENTER to store the station.
5. Repeat the above steps to store more radio stations.





## ■ AUX-IN

1. Connect an aux cable (not included) to the Aux-in Jack of the Radio. Connect the other end of your external device.
2. Press the function button to select AUX mode.
3. Select and play songs from your external device. The sound will be played through the speakers of the radio.
4. Press the VOL +/- button to adjust volume.

## ■ USB/SD

1. Insert your USB or SD card into the corresponding port/slot on the Radio.
2. Press the function button to select USB/SD mode.
3. Use the buttons on the radio to control playback.

## ■ BLUETOOTH

1. Press the FUNCTION button until BT shows on the display.
2. Search for new Bluetooth devices on your smart device.
3. Select 'DAB RADIO' on your smart device and click to connect.

## ■ ALARM

1. Put the radio into standby.
2. Press and hold the PLAY/PAUSE/TIME/ENTER button to enter alarm set up. The display will show 'on time' and '00:00' will flash on the display.
3. Select the time for the alarm to start. Press CLK- and CLK+ to select the hour.
4. Press the PLAY/PAUSE/TIME/ENTER button to confirm.
5. Press CLK- and CLK+ to select the minutes and press PLAY/PAUSE/TIME/ENTER to confirm.
6. The display will now show 'OFF' time. Follow steps 3 and 4 to select a time for the alarm to finish.
7. The display will now show 'Buzzer'. Use the CLK-/BACK and CLK+/NEXT buttons to select the alarm mode. Choose between BUZZER/DAB/FM/BT/USB/CARD/AUX. Press TIME to confirm.
8. The screen will now show 'VOL 15'. The default alarm volume is 15. Use the CLK-/BACK and CLK+/NEXT buttons to select the volume level. Press PLAY/PAUSE/TIME/ENTER to confirm.



9. The alarm will sound at the set time.
10. Press SNOOZE to snooze the alarm for 9 minutes. You can snooze the alarm five times.
11. To cancel the alarm, hold the ALARM OFF button.

#### ■ CLOCK

1. Plug the radio in and turn it on.
2. Press the PLAY/PAUSE/TIME/ENTER button  
The time will flash on the display.
3. Press CLK- and CLK+ to select the hour and then the minutes. You can hold the function button to set the time format by 12hr or 24hr clock.
4. Press the PLAY/PAUSE/TIME/ENTER button to confirm.

#### ■ REPEAT

1. On USB or SD mode, select the song you wish to repeat.
2. Press MEM/REP once and the display will show REP1.  
The selected song will be repeated.
3. Press MEM/REP again and the display will show 'ALL'  
All songs will play.

#### ■ STANDBY

The radio will switch to standby mode if it is left idle on the Aux or USB/SD modes for over 10minutes. Press and hold the POWER button to switch to standby mode.

#### ■ SLEEP TIMER

The sleep timer allows you to play music for a certain amount of time, before the radio turns itself off automatically.

1. Press and hold SLEEP button.
2. The display will run through options 90-80-70-60-50-40-30-20-10-OFF.
3. When the display shows the required time (in minutes), stop pressing the button.
4. The SLEEP indicator will stay at the stop of the screen.
5. The Radio will continue playing for the selected amount of the minutes and will automatically turn off when the timer has finished.



---

## TROUBLESHOOTING

---

No sound / power	Volume turned down.	Adjust the volume using volume dial.
	Power cord not securely connected.	Reconnect the power cord.
	Batteries dead/incorrectly inserted.	Remove the batteries and re-insert. If it still does not work, insert fresh batteries.
No radio signal	Antenna not adjusted/no frequency.	When listening to FM radio, ensure the antenna is fully adjusted. Use the tuning dial to adjust the radio frequency.

---

## CLEANING AND CARE

---

### ■ MAINTENANCE

This appliance has been designed to operate over a long period of time with a minimum of maintenance. Continuous satisfactory operation depends upon proper care and regular cleaning.

### ■ CLEANING

The exterior surface of the appliance should be wiped with a clean dry cloth only.

#### DO NOT

Do not use abrasive cleaners, solvents or polish on any part of this appliance.

### ■ PRECAUTIONS AND GENERAL MAINTENANCE

- Place the set on a hard and flat surface so that the system does not tilt.
- Do not expose the set or batteries to humidity, rain, sand or excessive heat caused by heating equipment or direct sunlight.
- Do not cover the set. Allow adequate ventilation with a minimum gap of 15cm between the ventilation holes and surrounding surfaces. Do not place on large pile carpets or restrict flow of air underneath the set.



---

## WEEE/ENVIRONMENTAL PROTECTION

---



### ■ DISPOSAL OF ELECTRICAL AND ELECTRONIC EQUIPMENT

Do not dispose of this product with household waste. For the proper treatment, recovery and recycling please take this product to the appropriate waste collection point. If you are unsure where this may be, please contact your local authority. Improper disposal may be harmful to the environment.



### ■ PRODUCT END OF LIFE AND BATTERY DISPOSAL

The battery contains substances that may pollute the environment. At end of life for the product, always remove the battery and separate before you discard the product at your local waste collection point. Both battery and product should be disposed separately.

If you have trouble removing the battery, then you should contact a qualified technician or authorised service centre.

Contact your local authority for details and locations of official waste collection points. Do not dispose of batteries or product with normal household waste.

---

## LLOYTRON® CUSTOMER SERVICES

---

If you have any queries about this product then please contact Lloytron Customer Services online at:



[www.lloytronhelpdesk.com](http://www.lloytronhelpdesk.com)

To find out more about Lloytron products, visit [www.lloytron.com](http://www.lloytron.com)

### WARRANTY

An additional manufacturer's warranty is not provided with this product. If the product develops a manufacturing fault in any way, then under Statutory Rights you must stop use and return it to the retailer in which it was purchased.



Distributed by Lloytron Plc, Laltex House, Leigh, England WN7 3XH