



POK1.0805.2P.B

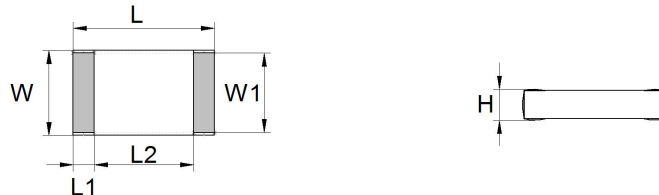
SMD platinum sensor

For the automatic assembling on PCBs

Benefits & Characteristics

- Excellent long-term stability
- Low self-heating
- Fast response time

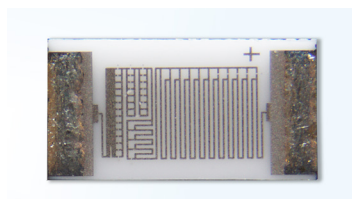
Illustration¹⁾



Technical Data

Operating temperature range:	-50 °C to +150 °C	
Nominal resistance:	100 Ω at 0 °C	
Characteristics curve:	3850 ppm/K	
Long-term stability:	< 0.04 % at 1000 h at 130 °C	
Tolerance class (dependent on temperature range):	IEC 60751 F0.3	B (IST AG reference)
Connection:	tin-coated (96.5Sn/3Ag/0.5Cu), LMP lead-free, (reflow soldering)	
Dimensions:	1.9 / 0.25 / 1.3 x 1.25 / 1.15 x 0.45	
Tolerance:	±0.2 mm (H ±0.15)	
Solderability:	235 °C ≤ 8 s (DIN IEC 68 T2-20, Ta Meth. 1)	
Resistance to soldering heat: ¹⁾ <small>1) The soldering process can influence accuracy</small>	260 °C 10 s (DIN IEC 68 T2-20, Ta Meth. 1A)	
Recommended applied current: ²⁾ <small>2) Self-heating must be considered</small>	1 mA at 100 Ω	
Packaging:	Packed in bags (< 100 pcs)	

Product Photo





Order Information

Description:	Item number:	Former main reference:
P0K1.0805.2P.B	100957	010.01126

Additional Documents

Application Note:	Document name:
	ATP_E

