

CREALITY



MK-HF Nozzle Kit 5pcs/Set

MFR: 4004020053

MK-HF Nozzle Kit

Lead New Hardness Peak



MK-HF Nozzle Kit



Copper alloy nozzle of
international standard

Stable performance



Round aperture

Unimpeded process



Smooth inside

Smooth feeding

Product display

0.25mm*1, 0.4mm*2, 0.6mm*1, 0.8mm*1



0.25



0.4



0.4



0.6



0.8

Harder than Brass



Brass

Mohs hardness: 3.0

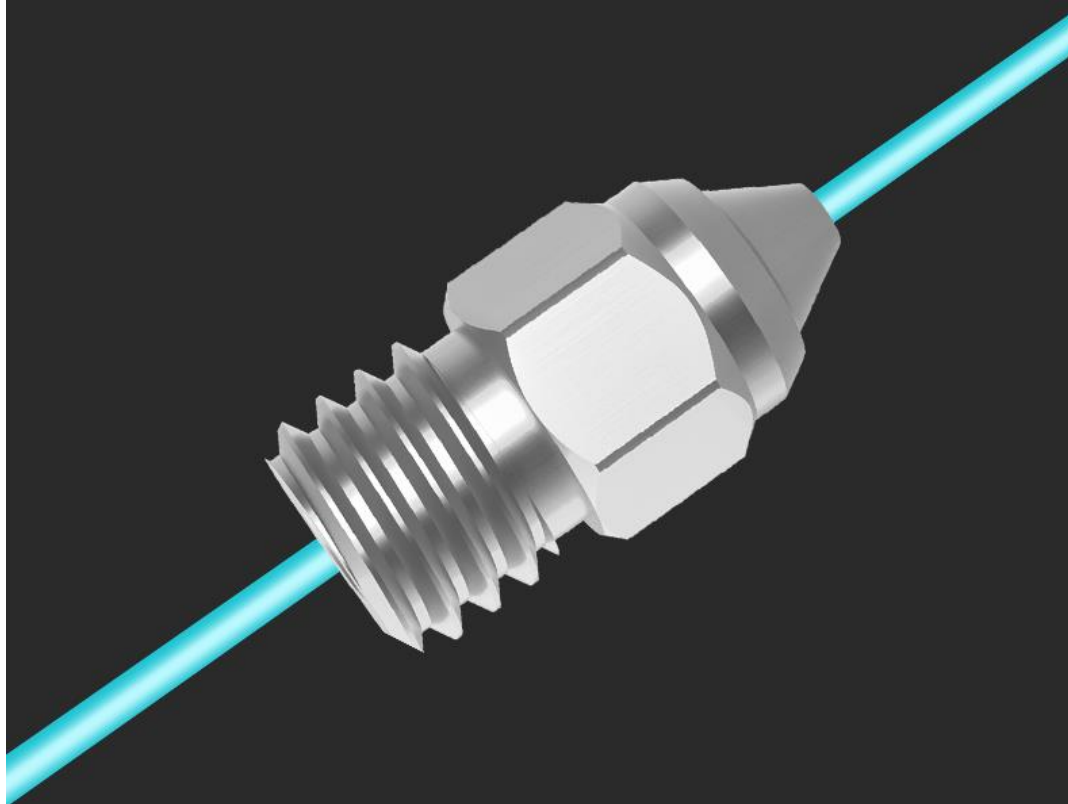


Copper Alloy

Mohs hardness: 6.0

Copper Alloy Strong Performance

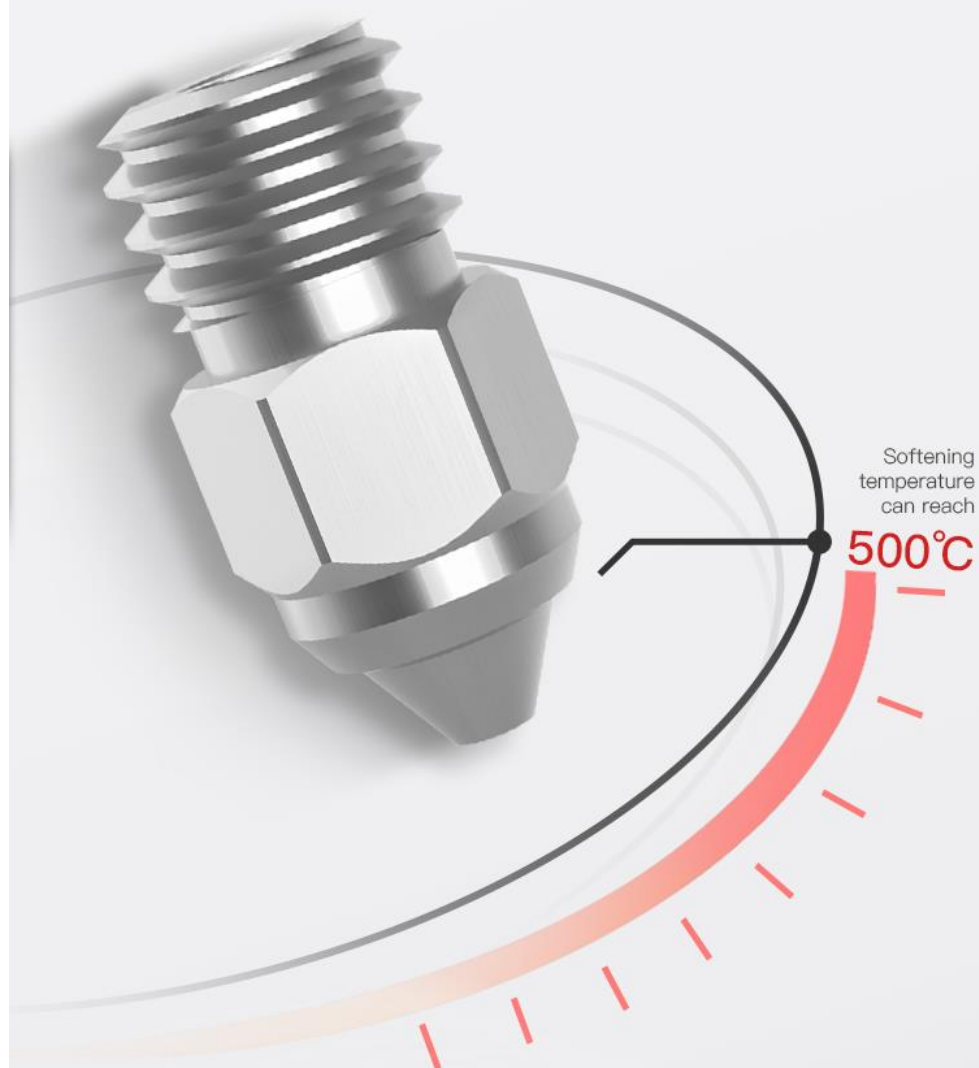
Higher thermal conductivity ensures uniform heating of the nozzle and smoother extrusion. The structural strength of layer-to-layer adhesion and printing quality are improved.



Thermal Conductivity: 330w/m.k
(Brass: 105w/m.k)

Powerful Enough to Print High Temperature Filament

It solves the problem of rapid heating and continuous printing of
high-temperature filament with extended lifespan.



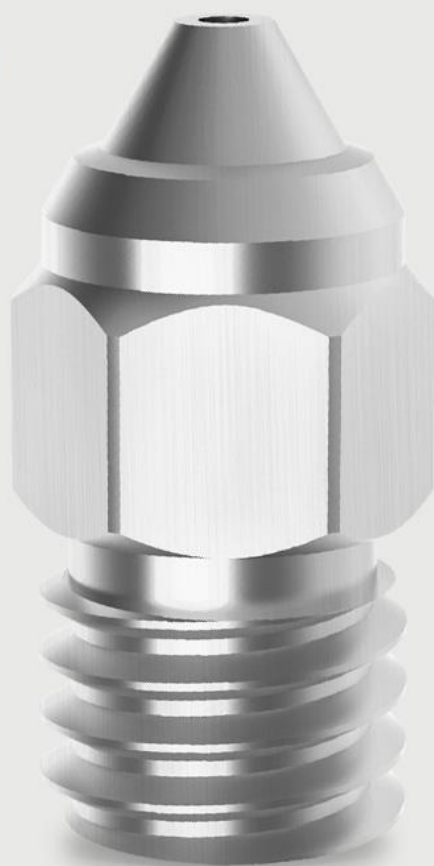
Advanced Nickel Plating

It greatly reduces the adhesion between filament and the nozzle which results in more smooth extrusion.

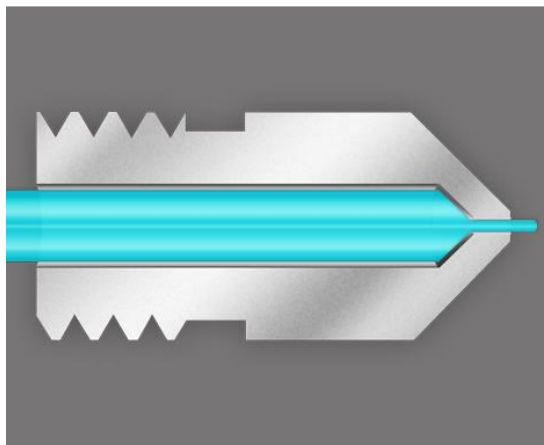


Better Compatibility and Applicability

Works with most FDM printing materials such as PLA, ABS, PETG, TPE, TPU, PC, etc
and high temperature filaments such as PEEK, PEKK, PEI, PSU, PPSU, etc.
Compatible with a variety of Creality printers.



Product Details



01

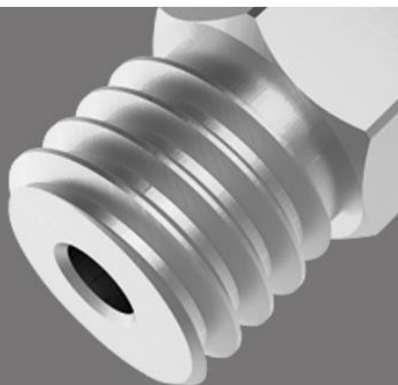
Smooth Inside

The less than 0.3mm aperture roughness makes smooth extrusion of inner wall.

02

Impeccable Aperture

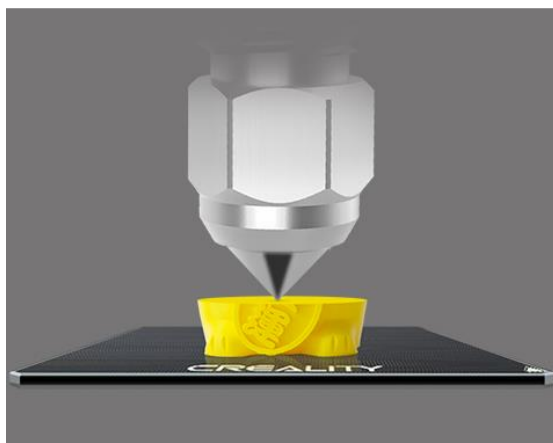
No burr aperture,
No clogging, Smoother
feeding.



01

Tight Fit, No Leakage

Flat surface and intense
joint effectively solve
leakage problem.



Product Parameters

Product name: MK-HF Nozzle Kit

Aperture diameter: 0.25mm*1 0.4mm*2 0.6mm*1 0.8mm*1

Application: CR-6 SE、CR-6 Max、Ender-6、Ender-3、Ender-3 Pro、
Ender-3S、Ender-3 V2、Ender-3 Max、Ender-5 Pro、
Ender-5 Plus、CR-10、CR-10 V2、CR-10V3、
CR-10Min、CR-10S

Product photograph



0.8

0.6

0.4

0.4

0.25

