

# Test Workflow

Engineering-Grade Tools Built for Test

A software bundle engineers use to:

- Develop automated test systems with LabVIEW
- Access, view, and analyze data and create reports with DIAdem
- Create automated test sequences with TestStand
- Perform data acquisition and logging on NI Hardware with FlexLogger
- Build web applications for test with G Web Development Software

## What You Need Across Your Workflow

Test Workflow is NI's recommended collection of software for engineers working on research, validation, and production test applications.

See how Test Workflow can help you overcome your daily challenges:



LabVIEW

Most Productive Development Environment



InstrumentStudio

Device Set-Up & Configuration



G Web

Remote Access to Test



FlexLogger

Fast Data Acquisition



DIAdem

Finding and Analyzing Data

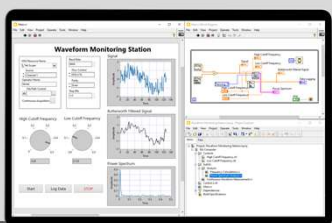


TestStand

Scaling & Deploying Test

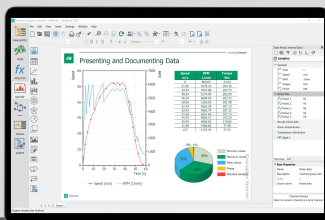


# Test Workflow Software



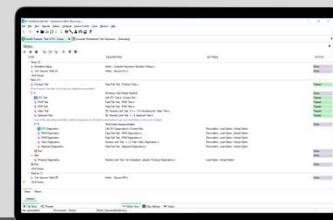
## LabVIEW

- Acquire data from NI and third-party hardware and communicate using industry protocols
- Create interactive UIs for test monitoring and control
- Integrate code written in Python, C/C++, .NET, and MATLAB®



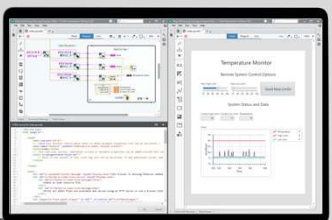
## DIAdem

- Import over 1000 file formats and search through metadata to find data
- Display data in multiple 2D-axis systems, play video data, and more
- Utilize advanced analysis functions such as code order tracking, order and rain flow analysis, and more.



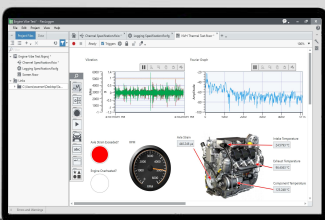
## TestStand

- Integrate code modules written in other programming languages
- Utilize built-in parallel test sequence execution
- Customize database logging and reports in XML, HTML, ASCII, and ATML



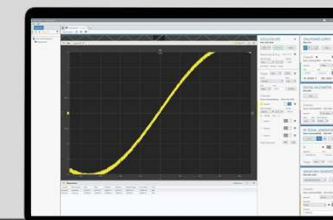
## G Web Development Software

- Design custom UIs with pre-built objects for data display and user input
- Utilize pre-packaged APIs for data communication with test systems built in LabVIEW, Python, and C#
- Cloud and On-Premises Hosting



## FlexLogger

- Acquire data and log test results to .tdms or .csv files
- Inline calculations for simple math, filtering, Boolean logic, and more
- Integrated TDMS Viewer for interactive data review



## InstrumentStudio

- Monitor and debug automated test systems
- No-code interface to integrate instruments into a single view
- Code export for instrument configurations

“The NI platform gave us the ability to significantly scale our production test throughput by 400% with an ROI of 185% while carefully maintaining the quality and performance standards that our military radios are known for.”

-Joseph Nakoski  
Engineering Director, Harris

# Test Workflow Editions

Select the edition that best meets your needs.

## Test Workflow Standard

Recommended for individuals responsible for automating basic electromechanical V&V and/or electrical V&D or production test.



LabVIEW **Full**



DIAdem **Advanced**



InstrumentStudio



FlexLogger



G Web Development Software

## Test Workflow Pro

Recommended for individuals needing more test automation tools including test sequencing and test or maintenance/configuration frameworks.

Everything in Standard, plus



LabVIEW **Professional**

Everything in Full, plus

- ✓ Application Builder
- ✓ Report Generation Toolkit
- ✓ Database Connectivity Toolkit



DIAdem **Professional**

Everything in Advanced, plus

- ✓ Advanced Visualization Displays
- ✓ Advanced Analysis Functions



TestStand

Contact your NI product expert to get help solving your test challenges.

US Corporate Headquarters  
11500 N Mopac Expwy,  
Austin, TX 78759-3504  
T: 512 683 0100 F: 512 683 9300  
info@ni.com

