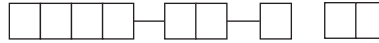


NEW

Product Description



Model

- 11SL** SPDT Sealed Switch - Small Bracket
- 12SL** SPDT Sealed Switch - Large Bracket
- 23SL** DPDT Sealed Switch - Extended Bracket

Terminations

- 40** 0.187" Quick Connect
- W0** 16AWG Wires - UL1015 (T55)

Elect Rating

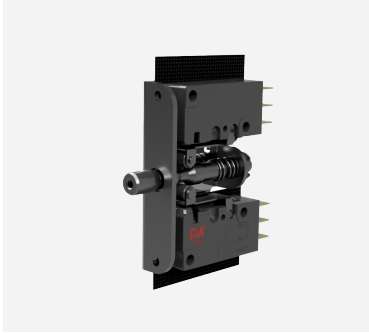
- 01** 0.1A @ 125/250 VAC or 30VDC
- 03** 3A @ 125/250 VAC or 30VDC
- 06** 6A @ 125/250 VAC or 30VDC
- 10** 10A @ 125/250 VAC or 5A@ 30VDC

Plunger Style

- 2** Stainless Steel, not tapped
- 4** Stainless Steel, tapped

SEALED INTERLOCK DOOR SWITCH

SL Snap



Product Overview

C&K's SL series IP67 sealed door interlock switch features push (momentary)/ pull (maintained) motion as well as SPDT and DPDT in 3 different bracket sizes (small, large and extended), multiple mounting configurations. It's offered with 0.187" quick connect terminals and 12" long wire harness. In terms of performance, the SL series uses the TFS series Snap acting switch that its UL61058-1 and ENEC15 certified, this new solution can work at low or high current from 0.1A to 10A with AC or DC voltage, making them perfect for harsh environment & outdoor, food service/ food industrial equipment, computer enclosures, industrial enclosures and panel builders. Worldwide design and developer engineers of these applications prefers C&K interlock switches because of the quality level, prompt delivery time.

More information is always searchable on C&K website www.ckswitches.com

Key Product Features

- IP67 rated / Dust tight (quick connect terminals)
- From 0.1A to 10A max
- AC or DC Rating Voltage
- Push (MOM) / pull motion (Maintained)
- Threaded or Non-Threaded Plunger
- SPDT or DPDT (Extended SS Bracket)
- Integrated wire harness solution

Applications

- Industrial food equipment
- String converters
- Test lab equipment
- Panel builders
- Industrial enclosures



AMERICAS
Tel: +1.617.969.3700

ASIA
Tel: +852.3713.5288

EUROPE
Tel: +33.1.60.24.51.51

