



MASTER VALUE LEDspot MV

MASTER LEDspot VLE D 650lm GU10 930 120D UK

Delivering a warm, halogen-like accent beam, MASTER LEDspot MV is a perfect fit for spot lighting (track, corridors, lift lobbies, display cases and cabinets) in the hospitality industry. It is particularly suitable to public areas where the light is on 24/7, such as lobbies, corridors, stairwells. MASTER LEDspot MV delivers huge energy savings and minimises maintenance cost without any compromise on brightness, enabling hospitality owners to achieve a return on their investment within one year. These LEDspots are compatible with most existing fixtures with a GU10 holder and designed as a retrofit replacement for halogen or incandescent spots. The dimmable versions drive further efficiencies, while helping to create the desired atmosphere. For environments where the right atmosphere needs to be created (e.g. bars and restaurants), the “DimTone” feature could be useful. This is a LED feature that creates a warmer tone once light is dimmed down to lower intensities.

Warnings and Safety

- Operating temperature range is between -20° C and 45° C ambient
- Only to apply in dry or damp locations and most of open fixtures with lamp-holders that offer sufficient space (10 mm free air space)
- Not intended for use with emergency light fixtures or exit lights

Product data

General Information		Switching cycle	
Cap base	GU10 [GU10]	50,000X	
EU RoHS compliant	Yes	Light Technical	
Nominal lifetime (nom.)	25000 h	Colour Code	930 [CCT of 3,000 K]
		Beam Angle (Nom)	120 °

MASTER VALUE LEDspot MV

Luminous flux (nom.)	650 lm
Luminous intensity (nom.)	200 cd
Colour designation	White (WH)
Correlated Colour Temperature (Nom)	3000 K
Luminous efficacy (rated) (nom.)	104.00 lm/W
Colour consistency	<6
Colour rendering index (nom.)	90
LLMF at end of nominal lifetime (nom.)	70 %

Operating and Electrical

Input frequency	50 to 60 Hz
Power (Rated) (Nom)	6.2 W
Lamp current (nom.)	33 mA
Starting time (nom.)	0.5 s
Warm-up time to 60% light (nom.)	0.5 s
Power factor (nom.)	0.88
Voltage (Nom)	220-240 V

Temperature

T-Case maximum (nom.)	80 °C
-----------------------	-------

Controls and Dimming

Dimmable	Yes
----------	-----

Mechanical and Housing

Bulb shape	PAR16 [PAR 2 inch]
------------	---------------------

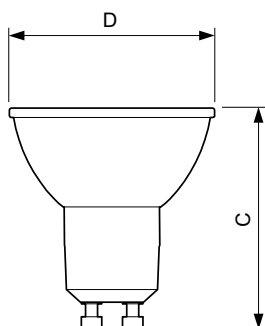
Approval and Application

Energy Efficiency Class	F
Suitable for accent lighting	No
Energy consumption kWh/1,000 hours	7 kWh
	391917

Product Data

Full product code	871869970609801
Order product name	MASTER LEDspot VLE D 650lm GU10 930 120D UK
EAN/UPC – product	8718699706098
Order code	70609801
SAP numerator – quantity per pack	1
Numerator – packs per outer box	10
SAP material	929002210099
SAP net weight (piece)	0.038 kg

Dimensional drawing

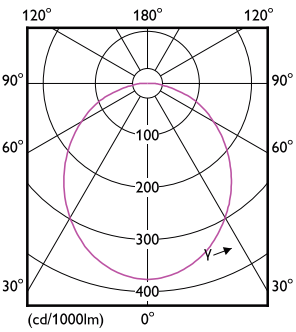


GU10 6.2-80W 650lm 120D 3000K GU10 D

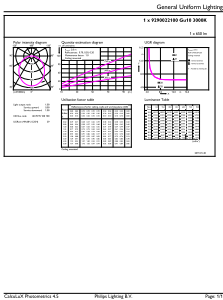
Product	D	C
MASTER LEDspot VLE D 650lm GU10 930 120D UK	50 mm	54 mm

MASTER VALUE LEDspot MV

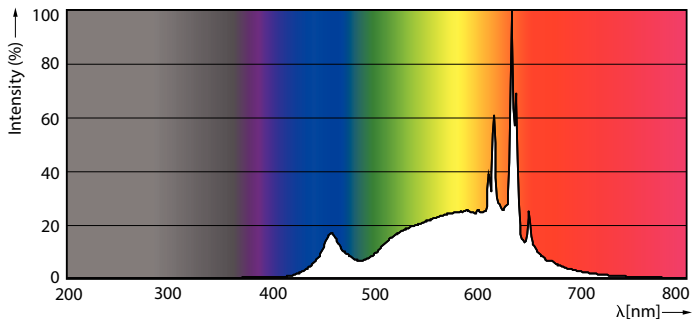
Photometric data



GU10 7.5-80W 650lm 120D 3000K GU10 D

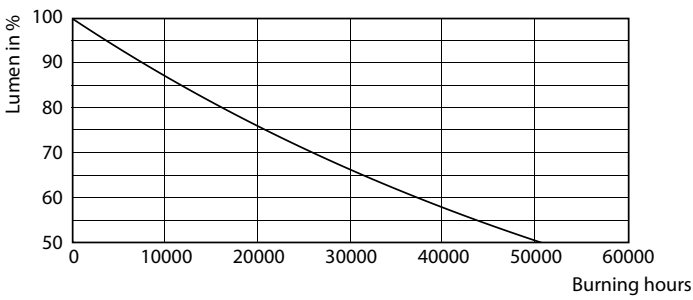


GU10 7.5-80W 650lm 120D 3000K GU10 D

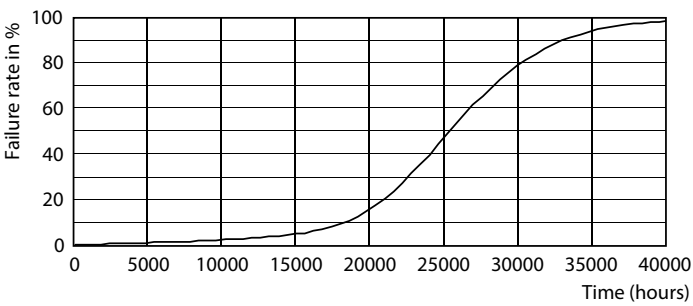


GU10 7.5-80W 650lm 120D 3000K GU10 D

Lifetime



GU10 7.5-80W 650lm 2700K GU10 D 15khrs



GU10 7.5-80W 650lm 2700K GU10 D 15khrs

MASTER VALUE LEDspot MV

