

# MasterConnect LEDtube EM/mains T8



## MasterConnect LEDtube IA 1200mm UO 16W865 T8

Introducing MasterConnect LED lamps – smart retrofit LED lamps that give you an easy and seamless way to upgrade to connected lighting. Simply set up with an intuitive app, MasterConnect LED lamps can be programmed to maximise energy savings, while providing wireless and automated light for your comfort and convenience. What's more, it is fully scalable and upgradable. If you want to enjoy further benefits, such as remote control or management dashboard, you can simply keep the currently installed lamps and add a gateway to experience all the advantages of a cloud-based system. There's no better way to take lighting solutions to the next level.

### Product data

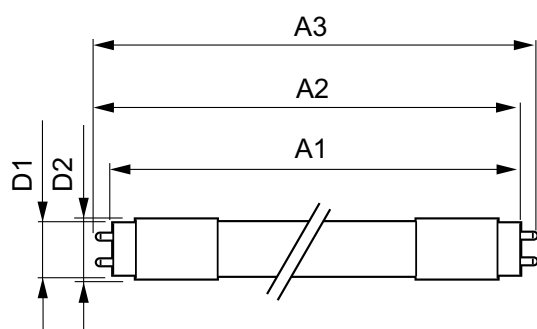
General Information		Luminous efficacy (rated) (nom.)	156.00 lm/W
Cap base	G13 [ Medium Bi-Pin Fluorescent]	Colour consistency	<6
EU RoHS compliant	Yes	Colour rendering index (nom.)	83
Nominal lifetime (nom.)	60000 h	LLMF at end of nominal lifetime (nom.)	70 %
Switching cycle	200,000X	Operating and Electrical	
Technical type	16-36W	Input frequency	50 to 60 Hz
	Sphere	Power (Rated) (Nom)	16 W
Light Technical		Lamp current (max.)	76 mA
Colour Code	865 [ CCT of 6,500 K]	Lamp current (min.)	69 mA
Beam Angle (Nom)	160 °	Starting time (nom.)	0.5 s
Luminous flux (nom.)	2500 lm	Warm-up time to 60% light (nom.)	0.5 s
Colour designation	Cool Daylight	Power factor (nom.)	0.9
Correlated Colour Temperature (Nom)	6500 K		

## MasterConnect LEDtube EM/mains T8

Voltage (Nom)	220-240 V
<b>Temperature</b>	
T-ambient (max.)	45 °C
T-ambient (min.)	-20 °C
T storage (max.)	65 °C
T storage (min.)	-40 °C
T-Case maximum (nom.)	50 °C
<b>Controls and Dimming</b>	
Dimmable	Wireless Dim
<b>Mechanical and Housing</b>	
Product length	1200 mm
Bulb shape	Tube, double-ended
<b>Approval and Application</b>	
Energy Efficiency Class	D

Energy-saving product	Yes
Approval marks	RoHS compliance TUV CE marking KEMA Keur certificate
Energy consumption kWh/1,000 hours	16 kWh
	406201
<b>Product Data</b>	
Full product code	871869966972000
Order product name	MasterConnect LEDtube IA 1200mm UO
	16W865 T8
EAN/UPC – product	8718699669720
Order code	66972000
SAP numerator – quantity per pack	1
Numerator – packs per outer box	10
SAP material	929002210502
SAP net weight (piece)	0.320 kg

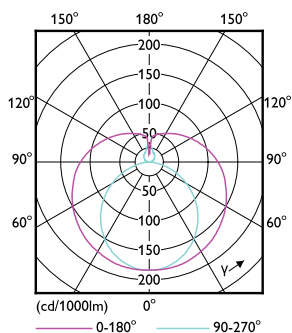
### Dimensional drawing



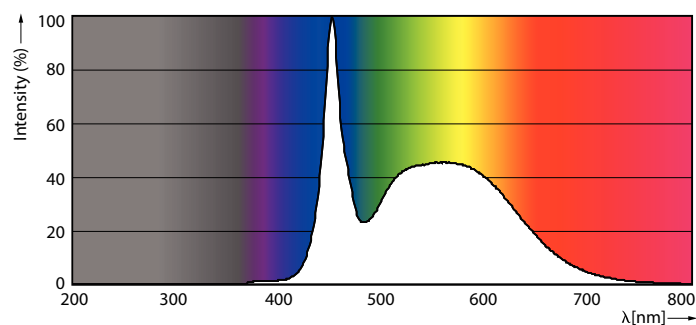
TLED 4ft 230V 16.5-32W 2500lm 6500K G13

Product	D1	D2	A1	A2	A3
MasterConnect LEDtube IA 1200mm UO 16W865 T8	25.8 mm	28 mm	1198.2 mm	1205.3 mm	1212.4 mm

### Photometric data



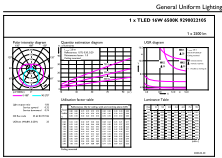
MC LEDtube 16W G13 2500lm



MC LEDtube G13 865

MasterConnect LEDtube EM/mains T8

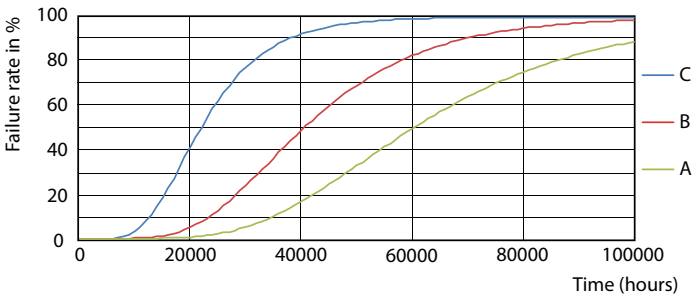
Photometric data



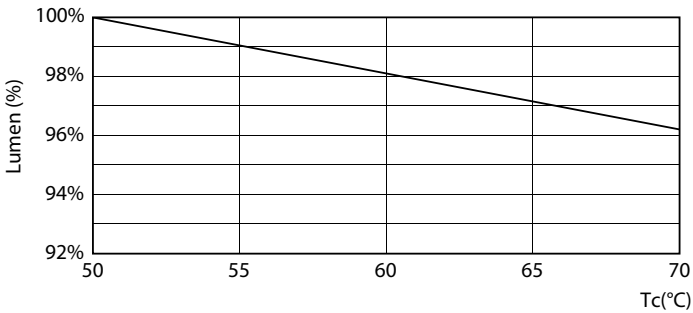
Photometric Data 1.1 Page 1 of 10 Page 10

MC LEDtube 16W G13 2500lm 865

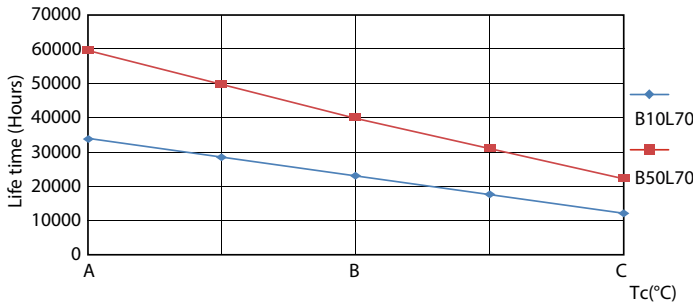
Lifetime



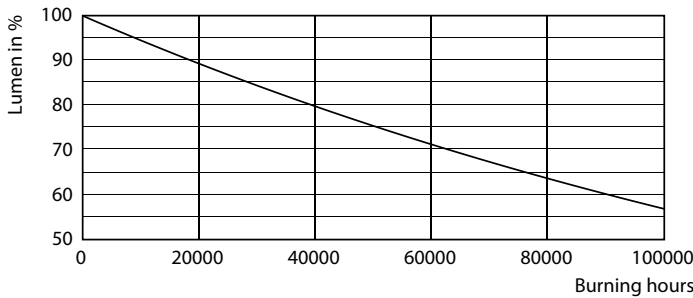
LEDtube\_60K\_FailureRate



MC LEDtube 16W 60K LumenVsTc



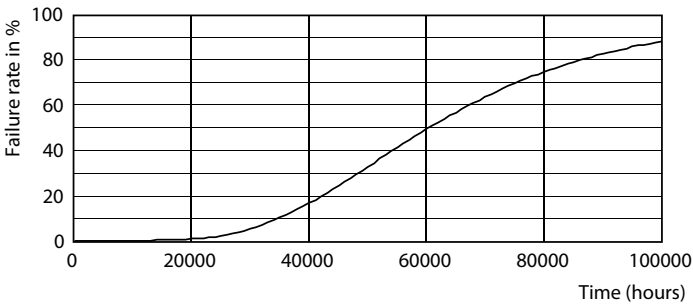
LEDtube\_60K\_LifetimeVsTc



LEDtube\_60K

MasterConnect LEDtube EM/mains T8

Lifetime



LEDtube\_60K

