



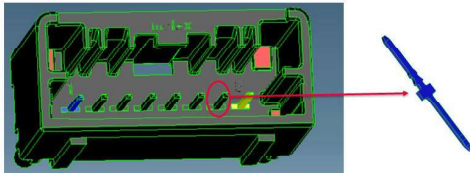
Product Change Notification (PCN)

| | | | |
|--|---|-------------|--------------------|
| PCN Number | 510748 | Date Issued | September 22, 2021 |
| Reason for Change | Capacity change or tool replacement | | |
| Change Type Description | This letter is to inform you that another set of tooling is being added to meet the current and future demands of this product. There will be no changes in the fit, form or function from the additional tooling when compared to the current tooling. | | |
| Reason for Short Notice | New Capacity | | |
| Assessment of Change | Product will be fully qualified before it is shipped. Qualification reports will be available after below listed date | | |
| Internal Molex Qualification Date | October 30, 2021 | | |
| Sample Availability Date (Changed Part) | October 30, 2021 | | |
| Planned Implementation Date | February 20, 2022 | | |
| Method of Identifying Change | Date code | | |

RELEASED

Before Change

Impacted Products Pictures



Mini50 TH

After Change

Overview

- Mini50 TH header pin new capacity die is being fabricated to replace the old die because the service life of old die will be end. The new capacity die will be qualified and production will be run in Chengdu. There will be no changes in the fit, form or function from the new die when compared to the old die.
- Product Impact:
 - no impact to fit, form or function
- Part Number Impact:
 - see attached impacted parts list
- PPAP will be available on Nov 30th, 2021.
 - If PPAP requested, disposition response required within 5 days of submission date or it will be considered approved.
 - If no PPAP requested by Dec 30th, 2021, the PPAP will be considered approved.



Product Change Notification (PCN)

You may address any technical inquiries regarding this PCN by sending E-mail to pcn_coordinator@molex.com or your Local Sales Engineer.

Note: While responding, please retain "**PCN Notification:510748**" in the e-mail Subject line for faster response.

RELEASED

Molex, LLC
2222 Wellington Court
Lisle, IL 60532
TEL: 630-969-4747
www.molex.com