

The Bulgin Radio Frequency (RF) connector range offers optimised solutions to work with a wide range of signals at various frequency levels with low losses. These connectors are expertly designed to work with coaxial cables to operate at multiple Gigahertz, offering protection and a standard shielding with coaxial hardware.



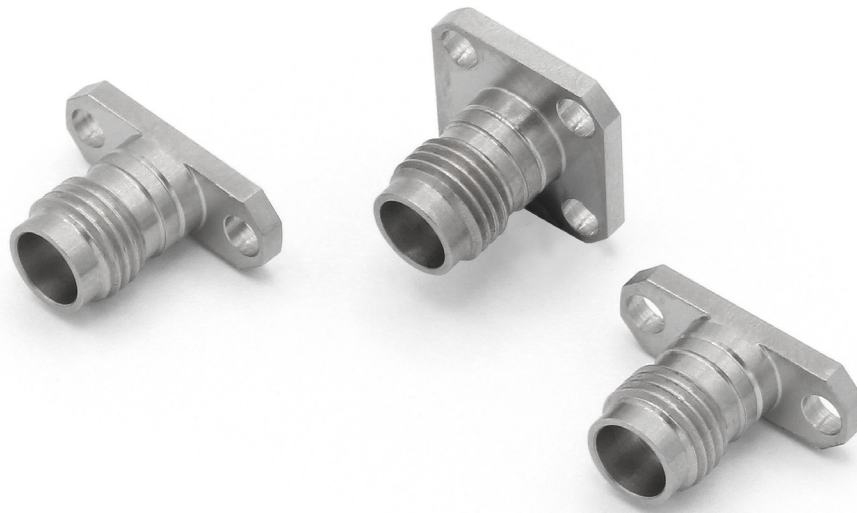
Key Features:

- ⊕ 50-ohm Impedance
- ⊕ Insulation resistance >5000MΩ
- ⊕ Durability >500 Cycles
- ⊕ Available in Male and Female Threads
- ⊕ Available in Plug or Jack
- ⊕ Beryllium Copper Contact Pin
- ⊕ Body Material available in Stainless Steel Passivation and Brass with Gold Plating

1.85mm Series	196
2.40mm Series	199
2.92mm Series	204
N Type Series	211
SMA Series	215
SSMA Series	222
TNCA Series	226
RF Adapter Series	230
RF Termination Series	238

Our superior quality RF connectors with 1.85mm (V connector, V Type) interface are manufactured with beryllium copper contacts and stainless-steel connector bodies. Our 1.85mm connector provides mode free operation up to 65GHz.

The 1.85mm connectors have M7 threads and are mechanically compatible with 2.40mm connectors. Also known as "V connectors" they cover the V-band frequency. The 1.85mm connectors are used in a wide range of applications including Military, Aerospace, SATCOM, Test & Measurement etc.



Key Features:

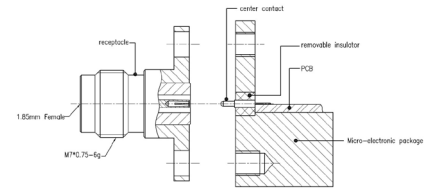
- ⊕ 50-ohm Impedance
- ⊕ Insulation resistance >5000MΩ
- ⊕ Durability >500 Cycles
- ⊕ Available in Male and Female Threads
- ⊕ Available in Plug or Jack
- ⊕ Beryllium Copper Contact Pin
- ⊕ Body Material available in Stainless Steel Passivation.

1.85mm Series Flange Mount



RF185A2JEGA

- ⊕ Max Voltage 150V
- ⊕ Operating Temperature -40C to +85C
- ⊕ Frequency Range 0-65GHz
- ⊕ VSWR <1.30
- ⊕ Dielectric withstanding Voltage >500V



Part Number	F2 or F4	Plug or Jack	Flange Mount Length	Mount Hole Distance	Socket Diameter
RF185A4JCCA	4	Jack	12.70mm	8.60mm	0.23mm
RF185A4JCCB	4	Jack	12.70mm	8.60mm	0.30mm
RF185A4PCCA	4	Plug	12.70mm	8.60mm	0.23mm
RF185A4PCCB	4	Plug	12.70mm	8.60mm	0.30mm
RF185A2JEGA	2	Jack	15.80mm	12.20mm	0.23mm
RF185A2JEGB	2	Jack	15.80mm	12.20mm	0.30mm

Electrical:

Insulation Resistance:	>5000MΩ
Impedance:	50Ω
Centre Contact Resistance:	<4.0mΩ
Outer Contact Resistance:	<2.5mΩ

Mechanical:

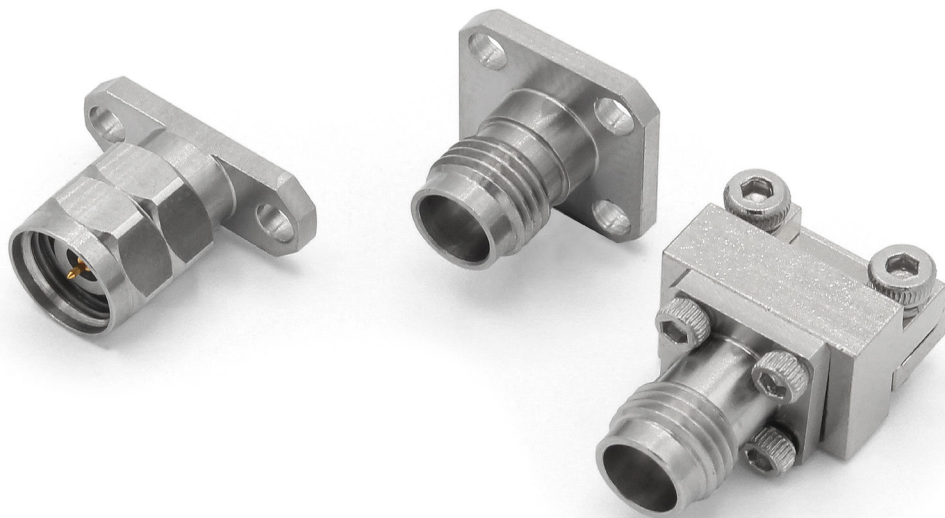
Centre Contact Retention:	>20N
Coupling Torque:	0.80Nm to 1.10Nm
Coupling Torque RPC N:	1.36Nm
Cycles:	>500

Material

Body:	Passivation of Stainless Steel
Contact:	Beryllium Copper
Insulator:	UNFILLED ULTEM 1000
RoHS:	Compliant

The 2.40mm series from the RF connector range form part of the wide ranging Radio Frequency interconnect mechanisms, with the 2.40mm connectors being more robust than the traditional SMA.

These connectors are accessible in standard polarity designs with bulkhead and mount-less categories. Available in both male and female versions, covering the frequency range up to 50GHz.



Key Features:

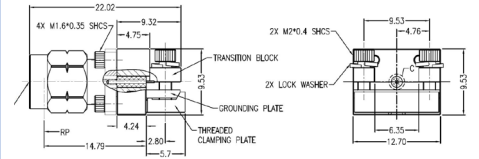
- 50-ohm Impedance
- Insulation resistance >5000MΩ
- Durability >500 Cycles
- Low Insertion Loss
- Available in Plug or Jack
- Beryllium Copper Contact Pin
- Screw-on Coupling Mechanism
- Body Material available in Stainless Steel Passivation

2.40mm Series End Launch Connector



RF240EJ

- ⊕ Max Voltage 150V
- ⊕ Operating Temperature -55C to +125C
- ⊕ Frequency Range 0-50GHz
- ⊕ VSWR <1.30
- ⊕ Dielectric withstanding Voltage >500V
- ⊕ Available with Extended PTFE



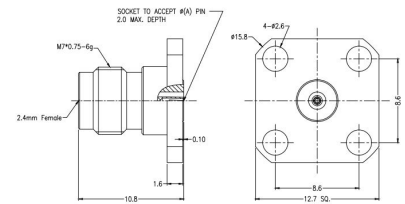
Part Number	Plug or Jack
RF240EJ	Jack
RF240EP	Plug

2.40mm Series Socket 4 Hole Flange



RF240A4JCCA

- ⊕ Max Voltage 150V
- ⊕ Operating Temperature -40C to +85C
- ⊕ Frequency Range 0-50GHz
- ⊕ VSWR <1.30
- ⊕ Dielectric withstanding Voltage >500V
- ⊕ Available with Extended PTFE



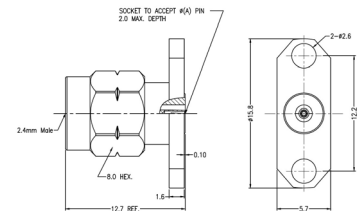
Part Number	Plug or Jack	Flange Mount Length	Mount Hole Distance	Socket Diameter
RF240A4JCCA	Jack	12.70mm	8.60mm	0.23mm
RF240A4JCCB	Jack	12.70mm	8.60mm	0.30mm
RF240A4JCCE	Jack	12.70mm	8.60mm	0.51mm
RF240A4PCCA	Plug	12.70mm	8.60mm	0.23mm
RF240A4PCCB	Plug	12.70mm	8.60mm	0.30mm
RF240A4PCCE	Plug	12.70mm	8.60mm	0.51mm

2.40mm Series Socket 2 Hole Flange



RF240A2PEGA

- ⊕ Max Voltage 150V
- ⊕ Operating Temperature -40C to +85C
- ⊕ Frequency Range 0-50GHz
- ⊕ VSWR <1.30
- ⊕ Dielectric withstanding Voltage >500V
- ⊕ Available with Extended PTFE



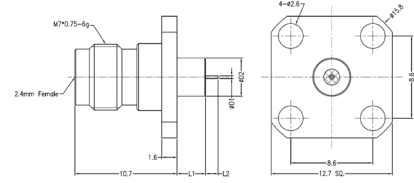
Part Number	Plug or Jack	Flange Mount Length	Mount Hole Distance	Socket Diameter
RF240A2JEGA	Jack	15.80mm	12.20mm	0.23mm
RF240A2JEGB	Jack	15.80mm	12.20mm	0.30mm
RF240A2JEGE	Jack	15.80mm	12.20mm	0.51mm
RF240A2PEGA	Plug	15.80mm	12.20mm	0.23mm
RF240A2PEGB	Plug	15.80mm	12.20mm	0.30mm
RF240A2PEGE	Plug	15.80mm	12.20mm	0.51mm

2.40mm Series Pin with Extended PTFE 4 Hole Flange



RF240A4JCCADGA

- ⊕ Max Voltage 150V
- ⊕ Operating Temperature -40C to +85C
- ⊕ Frequency Range 0-50GHz
- ⊕ VSWR <1.30
- ⊕ Dielectric withstanding Voltage >500V
- ⊕ Available with Extended PTFE
- ⊕ Flange Mount Length 12.70mm
- ⊕ Mount Hole Distance 8.60mm



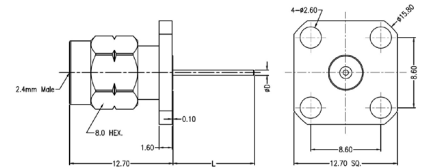
Part Number	Plug or Jack	Pin Diameter	Pin Length	Extended PTFE Dia	Extended PTFE Length
RF240A4JCCADGA	Jack	0.30mm	1.50mm	4.00mm	1.40mm
RF240A4JCCADGB	Jack	0.30mm	1.50mm	4.00mm	3.00mm
RF240A4JCCADAA	Jack	0.30mm	1.50mm	1.67mm	1.40mm
RF240A4JCCADAB	Jack	0.30mm	1.50mm	1.67mm	3.00mm
RF240A4JCCCCBG	Jack	0.60mm	1.27mm	2.00mm	6.35mm
RF240A4JCCCEBF	Jack	0.60mm	1.90mm	2.00mm	5.10mm

2.40mm Series Pin without Extended PTFE 4 Hole Flange



RF240A4PCCGM

- ⊕ Max Voltage 150V
- ⊕ Operating Temperature -40C to +85C
- ⊕ Frequency Range 0-50GHz
- ⊕ VSWR <1.30
- ⊕ Dielectric withstanding Voltage >500V
- ⊕ Available with Extended PTFE



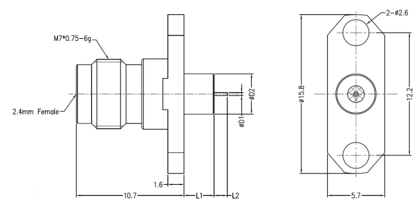
Part Number	Plug or Jack	Flange Mount Length	Mount Hole Distance	Pin Diameter	Pin Length
RF240A4JCCCKG	Jack	12.70mm	8.60mm	1.20mm	3.00mm
RF240A4JCCJJ	Jack	12.70mm	8.60mm	1.04mm	6.34mm
RF240A4JCCII	Jack	12.70mm	8.60mm	1.00mm	5.50mm
RF240A4JCCGM	Jack	12.70mm	8.60mm	0.86mm	8.75mm
RF240A4JCCEN	Jack	12.70mm	8.60mm	0.75mm	9.00mm
RF240A4JCCDK	Jack	12.70mm	8.60mm	0.64mm	6.84mm
RF240A4JCCDO	Jack	12.70mm	8.60mm	0.64mm	10.00mm
RF240A4PCCGM	Plug	12.70mm	8.60mm	0.86mm	8.75mm
RF240A4PCCDO	Plug	12.70mm	8.60mm	0.64mm	10.00mm

2.40mm Series Pin with Extended PTFE 2 Hole Flange



RF240A2JEGADAA

- ⊕ Max Voltage 150V
- ⊕ Operating Temperature -40C to +85C
- ⊕ Frequency Range 0-50GHz
- ⊕ VSWR <1.30
- ⊕ Dielectric withstanding Voltage >500V
- ⊕ Available with Extended PTFE
- ⊕ Flange Mount Length 15.80mm
- ⊕ Mount Hole Distance 12.20mm



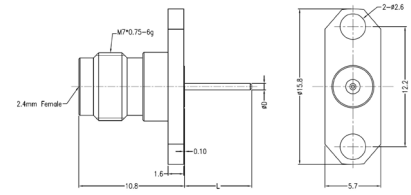
Part Number	Plug or Jack	Pin Diameter	Pin Length	Extended PTFE Dia	Extended PTFE Length
RF240A2JEGADGA	Jack	0.30mm	1.50mm	4.00mm	1.40mm
RF240A2JEGADGB	Jack	0.30mm	1.50mm	4.00mm	3.00mm
RF240A2JEGADAA	Jack	0.30mm	1.50mm	1.67mm	1.40mm
RF240A2JEGADAB	Jack	0.30mm	1.50mm	1.67mm	3.00mm
RF240A2JEGCCBG	Jack	0.60mm	1.27mm	2.00mm	6.35mm
RF240A2JEGCEBF	Jack	0.60mm	1.90mm	2.00mm	5.10mm

2.40mm Series Pin without Extended PTFE 2 Hole Flange



RF240A2PEGGM

- ⊕ Max Voltage 150V
- ⊕ Operating Temperature -40C to +85C
- ⊕ Frequency Range 0-50GHz
- ⊕ VSWR <1.30
- ⊕ Dielectric withstanding Voltage >500V
- ⊕ Available with Extended PTFE



Part Number	Plug or Jack	Flange Mount Length	Mount Hole Distance	Pin Diameter	Pin Length
RF240A2JEGKG	Jack	15.80mm	12.20mm	1.20mm	3.00mm
RF240A2JEGJJ	Jack	15.80mm	12.20mm	1.04mm	6.34mm
RF240A2JEGII	Jack	15.80mm	12.20mm	1.00mm	5.50mm
RF240A2JEGGM	Jack	15.80mm	12.20mm	0.86mm	8.75mm
RF240A2JEGEN	Jack	15.80mm	12.20mm	0.75mm	9.00mm
RF240A2JEGDK	Jack	15.80mm	12.20mm	0.64mm	6.84mm
RF240A2JEGDO	Jack	15.80mm	12.20mm	0.64mm	10.00mm
RF240A2PEGGM	Plug	15.80mm	12.20mm	0.86mm	8.75mm
RF240A2PEGDO	Plug	15.80mm	12.20mm	0.64mm	10.00mm

Electrical:

Insulation Resistance:	>5000MΩ
Impedance:	50Ω
Centre Contact Resistance:	<4.0mΩ
Outer Contact Resistance:	<2.5mΩ

Mechanical:

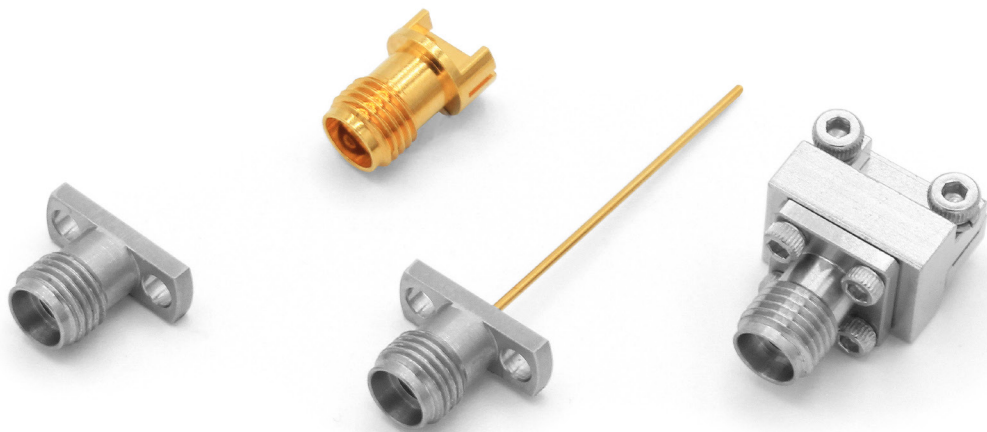
Centre Contact Retention:	>20N
Coupling Torque:	0.80Nm to 1.10Nm
Coupling Torque RPC N:	1.36Nm
Cycles:	>500

Material

Body:	Passivation of Stainless Steel
Contact:	Beryllium Copper
Insulator:	UNFILLED ULTEM 1000
RoHS:	Compliant

The 2.92mm (K) connector range operate mode-free up to 40GHz and are ideal for high-frequency module and T&M applications. These connectors are also known as K connector, K Type, SMK adapter.

Bulgin's High-quality 2.92mm connectors are constructed with beryllium copper contacts, brass or stainless-steel bodies. These connectors have a thicker wall than a standard SMA and also mate with the SMA and 3.50mm connector offerings.



Key Features:

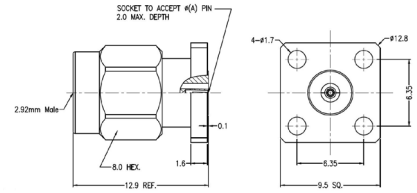
- 50-ohm Impedance
- Insulation resistance >5000MΩ
- Durability >500 Cycles
- Available in Male and Female Threads
- Available in Plug or Jack
- Beryllium Copper Contact Pin
- Body Material available in Stainless Steel Passivation and Brass

2.92mm Series Socket 4 Hole Flange



RF292A4PAAE

- ⊕ Max Voltage 250V
- ⊕ Operating Temperature -40C to +85C
- ⊕ Frequency Range 0-40GHz
- ⊕ VSWR <1.30
- ⊕ Dielectric withstanding Voltage >750V
- ⊕ Available with Extended PTFE



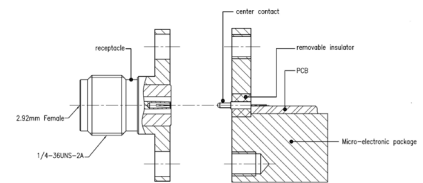
Part Number	Plug or Jack	Flange Mount Length	Mount Hole Distance	Socket Diameter
RF292A4JCCA	Jack	12.70mm	8.60mm	0.23mm
RF292A4JCCB	Jack	12.70mm	8.60mm	0.30mm
RF292A4JCCC	Jack	12.70mm	8.60mm	0.38mm
RF292A4JCCE	Jack	12.70mm	8.60mm	0.51mm
RF292A4JAAA	Jack	9.50mm	6.35mm	0.23mm
RF292A4JAAB	Jack	9.50mm	6.35mm	0.30mm
RF292A4JAAC	Jack	9.50mm	6.35mm	0.38mm
RF292A4JAAE	Jack	9.50mm	6.35mm	0.51mm
RF292A4PCCA	Plug	12.70mm	8.60mm	0.23mm
RF292A4PCCB	Plug	12.70mm	8.60mm	0.30mm
RF292A4PCCC	Plug	12.70mm	8.60mm	0.38mm
RF292A4PCCE	Plug	12.70mm	8.60mm	0.51mm
RF292A4PAAA	Plug	9.50mm	6.35mm	0.23mm
RF292A4PAAB	Plug	9.50mm	6.35mm	0.30mm
RF292A4PAAC	Plug	9.50mm	6.35mm	0.38mm
RF292A4PAAE	Plug	9.50mm	6.35mm	0.51mm

2.92mm Series Socket 2 Hole Flange



RF292A2JCCA

- ⊕ Max Voltage 250V
- ⊕ Operating Temperature -40C to +85C
- ⊕ Frequency Range 0-40GHz
- ⊕ VSWR <1.30
- ⊕ Dielectric withstanding Voltage >750V
- ⊕ Available with Extended PTFE



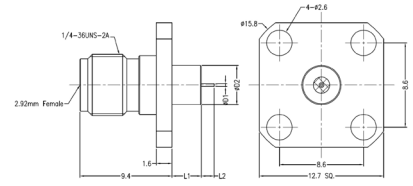
Part Number	Plug or Jack	Flange Mount Length	Mount Hole Distance	Socket Diameter
RF292A2JEGA	Jack	15.80mm	12.20mm	0.23mm
RF292A2JEGB	Jack	15.80mm	12.20mm	0.30mm
RF292A2JEGC	Jack	15.80mm	12.20mm	0.38mm
RF292A2JEGE	Jack	15.80mm	12.20mm	0.51mm
RF292A2JCCA	Jack	12.70mm	8.60mm	0.23mm
RF292A2JCCB	Jack	12.70mm	8.60mm	0.30mm
RF292A2JCCC	Jack	12.70mm	8.60mm	0.38mm
RF292A2JCCE	Jack	12.70mm	8.60mm	0.51mm
RF292A2JDFA	Jack	14.00mm	10.20mm	0.23mm
RF292A2JDFB	Jack	14.00mm	10.20mm	0.30mm
RF292A2JDFC	Jack	14.00mm	10.20mm	0.38mm
RF292A2JDFA	Jack	14.00mm	10.20mm	0.51mm
RF292A2PEGA	Plug	15.80mm	12.20mm	0.23mm
RF292A2PEGB	Plug	15.80mm	12.20mm	0.30mm
RF292A2PEGC	Plug	15.80mm	12.20mm	0.38mm
RF292A2PEGE	Plug	15.80mm	12.20mm	0.51mm
RF292A2PCEA	Plug	12.70mm	8.90mm	0.23mm
RF292A2PCEB	Plug	12.70mm	8.90mm	0.30mm
RF292A2PCEC	Plug	12.70mm	8.90mm	0.38mm
RF292A2PCEE	Plug	12.70mm	8.90mm	0.51mm

2.92mm Series Pin with Extended PTFE 4 Hole Flange



RF292A2JCCADGA

- Max Voltage 250V
- Operating Temperature -40C to +85C
- Frequency Range 0-40GHz
- VSWR <1.30
- Dielectric withstanding Voltage >750V
- Available with Extended PTFE
- Flange Mount Length 12.70mm
- Mount Hole Distance 8.60mm



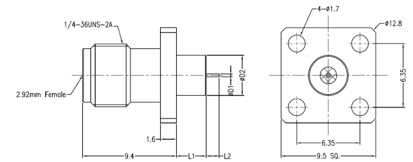
Part Number	Plug or Jack	Pin Diameter	Pin Length	Extended PTFE Dia	Extended PTFE Length
RF292A4JCCADGA	Jack	0.30mm	1.50mm	4.00mm	1.40mm
RF292A4JCCADGB	Jack	0.30mm	1.50mm	4.00mm	3.00mm
RF292A4JCCCGH	Jack	0.60mm	1.27mm	4.00mm	10.10mm
RF292A4JCCADAA	Jack	0.30mm	1.50mm	1.67mm	1.40mm
RF292A4JCCADAB	Jack	0.30mm	1.50mm	1.67mm	3.00mm

2.92mm Series Pin with Extended PTFE 4 Hole Flange



RF292A2JAAADGA

- Max Voltage 250V
- Operating Temperature -40C to +85C
- Frequency Range 0-40GHz
- VSWR <1.30
- Dielectric withstanding Voltage >750V
- Available with Extended PTFE
- Flange Mount Length 9.50mm
- Mount Hole Distance 6.35 mm



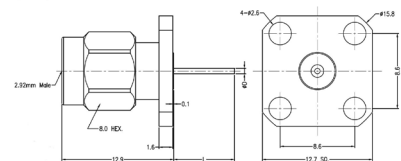
Part Number	Plug or Jack	Pin Diameter	Pin Length	Extended PTFE Dia	Extended PTFE Length
RF292A4JAAADGA	Jack	0.30mm	1.50mm	4.00mm	1.40mm
RF292A4JAAADGB	Jack	0.30mm	1.50mm	4.00mm	3.00mm
RF292A4JAAACGH	Jack	0.60mm	1.27mm	4.00mm	10.10mm
RF292A4JAAADAA	Jack	0.30mm	1.50mm	1.67mm	1.40mm
RF292A4JAAADAB	Jack	0.30mm	1.50mm	1.67mm	3.00mm

2.92mm Series Pin without Extended PTFE 4 Hole Flange



RF292A4PCCDK

- Max Voltage 250V
- Operating Temperature -40C to +85C
- Frequency Range 0-40GHz
- VSWR <1.30
- Dielectric withstanding Voltage >750V
- Available with Extended PTFE



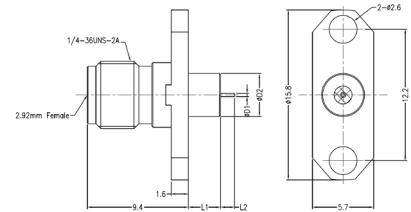
Part Number	Plug or Jack	Flange Mount Length	Pin Diameter	Pin Length
RF292A4JCCAL	Jack	12.70mm	0.30mm	7.00mm
RF292A4JCCDK	Jack	12.70mm	0.64mm	6.84mm
RF292A4JCCDP	Jack	12.70mm	0.64mm	10.92mm
RF292A4JCCES	Jack	12.70mm	0.75mm	30.00mm
RF292A4JAAAL	Jack	9.50mm	0.30mm	7.00mm
RF292A4JAADK	Jack	9.50mm	0.64mm	6.84mm
RF292A4JAADP	Jack	9.50mm	0.64mm	10.92mm
RF292A4JAAES	Jack	9.50mm	0.75mm	30.00mm
RF292A4PCCDK	Plug	12.70mm	0.64mm	6.84mm
RF292A4PCCDP	Plug	12.70mm	0.64mm	10.92mm
RF292A4PAADK	Plug	9.50mm	0.64mm	6.84mm
RF292A4PAADP	Plug	9.50mm	0.64mm	10.92mm

2.92mm Series Pin with Extended PTFE 2 Hole Flange



RF292A2JEGADGA

- ⊕ Max Voltage 250V
- ⊕ Operating Temperature -40C to +85C
- ⊕ Frequency Range 0-40GHz
- ⊕ VSWR <1.30
- ⊕ Dielectric withstanding Voltage >750V
- ⊕ Available with Extended PTFE
- ⊕ Flange Mount Length 15.80mm
- ⊕ Mount Hole Distance 12.20mm



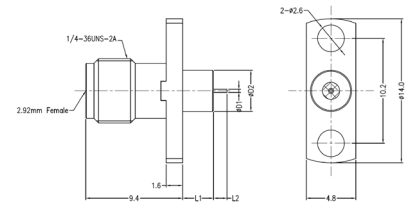
Part Number	Plug or Jack	Pin Diameter	Pin Length	Extended PTFE Dia	Extended PTFE Length
RF292A2JEGADGA	Jack	0.30mm	1.50mm	4.00mm	1.40mm
RF292A2JEGADGB	Jack	0.30mm	1.50mm	4.00mm	3.00mm
RF292A2JEGCCGH	Jack	0.60mm	1.27mm	4.00mm	10.10mm
RF292A2JEGADAA	Jack	0.30mm	1.50mm	1.67mm	1.40mm
RF292A2JEGADAB	Jack	0.30mm	1.50mm	1.67mm	3.00mm

2.92mm Series Pin with Extended PTFE 2 Hole Flange



RF292A2JDFADGA

- ⊕ Max Voltage 250V
- ⊕ Operating Temperature -40C to +85C
- ⊕ Frequency Range 0-40GHz
- ⊕ VSWR <1.30
- ⊕ Dielectric withstanding Voltage >750V
- ⊕ Available with Extended PTFE
- ⊕ Flange Mount Length 14.00mm
- ⊕ Mount Hole Distance 10.20mm



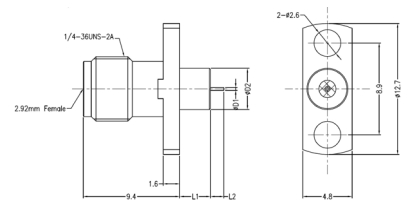
Part Number	Plug or Jack	Pin Diameter	Pin Length	Extended PTFE Dia	Extended PTFE Length
RF292A2JDFADGA	Jack	0.30mm	1.50mm	4.00mm	1.40mm
RF292A2JDFADGB	Jack	0.30mm	1.50mm	4.00mm	3.00mm
RF292A2JDFCCGH	Jack	0.60mm	1.27mm	4.00mm	10.10mm
RF292A2JDFADAA	Jack	0.30mm	1.50mm	1.67mm	1.40mm
RF292A2JDFADAB	Jack	0.30mm	1.50mm	1.67mm	3.00mm

2.92mm Series Pin with Extended PTFE 2 Hole Flange



RF292A2JCEADGA

- ⊕ Max Voltage 250V
- ⊕ Operating Temperature -40C to +85C
- ⊕ Frequency Range 0-40GHz
- ⊕ VSWR <1.30
- ⊕ Dielectric withstanding Voltage >750V
- ⊕ Available with Extended PTFE
- ⊕ Flange Mount Length 12.70mm
- ⊕ Mount Hole Distance 8.90mm



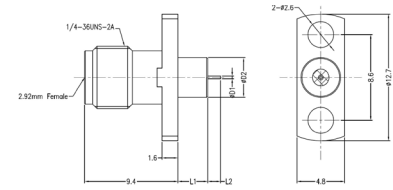
Part Number	Plug or Jack	Pin Diameter	Pin Length	Extended PTFE Dia	Extended PTFE Length
RF292A2JCEADGA	Jack	0.30mm	1.50mm	4.00mm	1.40mm
RF292A2JCEADGB	Jack	0.30mm	1.50mm	4.00mm	3.00mm
RF292A2JCECCGH	Jack	0.60mm	1.27mm	4.00mm	10.10mm
RF292A2JCEADAA	Jack	0.30mm	1.50mm	1.67mm	1.40mm
RF292A2JCEADAB	Jack	0.30mm	1.50mm	1.67mm	3.00mm

2.92mm Series Pin with Extended PTFE 2 Hole Flange



RF292A2JCCADGA

- ⊗ Max Voltage 250V
- ⊗ Operating Temperature -40C to +85C
- ⊗ Frequency Range 0-40GHz
- ⊗ VSWR <1.30
- ⊗ Dielectric withstanding Voltage >750V
- ⊗ Available with Extended PTFE
- ⊗ Flange Mount Length 12.70mm
- ⊗ Mount Hole Distance 8.60mm



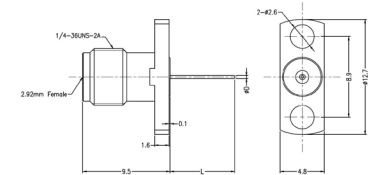
Part Number	Plug or Jack	Pin Diameter	Pin Length	Extended PTFE Dia	Extended PTFE Length
RF292A2JCCADGA	Jack	0.30mm	1.50mm	4.00mm	1.40mm
RF292A2JCCADGB	Jack	0.30mm	1.50mm	4.00mm	3.00mm
RF292A2JCCCGH	Jack	0.60mm	1.27mm	4.00mm	10.10mm
RF292A2JCCADAA	Jack	0.30mm	1.50mm	1.67mm	1.40mm
RF292A2JCCADAB	Jack	0.30mm	1.50mm	1.67mm	3.00mm

2.92mm Series Pin without Extended PTFE 2 Hole Flange



RF292A2JEGAL

- ⊗ Max Voltage 250V
- ⊗ Operating Temperature -40C to +85C
- ⊗ Frequency Range 0-40GHz
- ⊗ VSWR <1.30
- ⊗ Dielectric withstanding Voltage >750V
- ⊗ Available with Extended PTFE



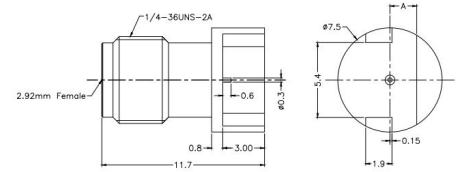
Part Number	Plug or Jack	Flange Mount Length	Mount Hole Distance	Pin Diameter	Pin Length
RF292A2JEGAL	Jack	15.80mm	12.20mm	0.30mm	7.00mm
RF292A2JEGDK	Jack	15.80mm	12.20mm	0.64mm	6.84mm
RF292A2JEGDP	Jack	15.80mm	12.20mm	0.64mm	10.92mm
RF292A2JEGES	Jack	15.80mm	12.20mm	0.75mm	30.00mm
RF292A2JCCAL	Jack	12.70mm	8.60mm	0.30mm	7.00mm
RF292A2JCCDK	Jack	12.70mm	8.60mm	0.64mm	6.84mm
RF292A2JCCDP	Jack	12.70mm	8.60mm	0.64mm	10.92mm
RF292A2JCCES	Jack	12.70mm	8.60mm	0.75mm	30.00mm
RF292A2JDFAL	Jack	14.00mm	10.20mm	0.30mm	7.00mm
RF292A2JDFDK	Jack	14.00mm	10.20mm	0.64mm	6.84mm
RF292A2JDFDP	Jack	14.00mm	10.20mm	0.64mm	10.92mm
RF292A2JDFES	Jack	14.00mm	10.20mm	0.75mm	30.00mm
RF292A2JCEAL	Jack	12.70mm	8.90mm	0.30mm	7.00mm
RF292A2JCEDK	Jack	12.70mm	8.90mm	0.64mm	6.84mm
RF292A2JCEDP	Jack	12.70mm	8.90mm	0.64mm	10.92mm
RF292A2JCEES	Jack	12.70mm	8.90mm	0.75mm	30.00mm
RF292A2PEGDK	Plug	15.80mm	12.20mm	0.64mm	6.84mm
RF292A2PEGDP	Plug	15.80mm	12.20mm	0.64mm	10.92mm
RF292A2PDFDK	Plug	14.00mm	10.20mm	0.64mm	6.84mm
RF292A2PDFDP	Plug	14.00mm	10.20mm	0.64mm	10.92mm
RF292A2PCEDK	Plug	12.70mm	8.90mm	0.64mm	6.84mm
RF292A2PCEDP	Plug	12.70mm	8.90mm	0.64mm	10.92mm

2.92mm Series Edge Launch Connector



RF292CP

- ⊕ Max Voltage 250V
- ⊕ Operating Temperature -40C to +85C
- ⊕ Frequency Range 0-40GHz
- ⊕ VSWR <1.30
- ⊕ Dielectric withstanding Voltage >750V
- ⊕ Only available in Brass with Gold Plating



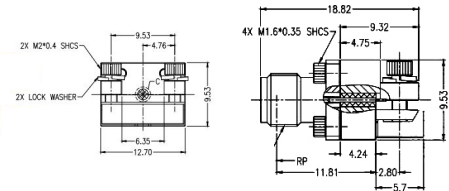
Part Number	Plug or Jack	PCB Thickness
RF292CPA	Plug	0.61mm
RF292CPB	Plug	0.87mm
RF292CPC	Plug	1.78mm
RF292CPD	Plug	1.88mm

2.92mm Series End Launch Connector



RF292EJ

- ⊕ Max Voltage 250V
- ⊕ Operating Temperature -55C to +125C
- ⊕ Frequency Range 0-40GHz
- ⊕ VSWR <1.50
- ⊕ Dielectric withstanding Voltage >750V



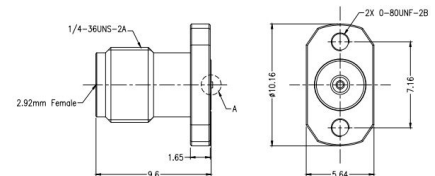
Part Number	Plug or Jack
RF292EJ	Jack
RF292EP	Plug

2.92mm Series Compression Mount Connector



RF292DJB

- ⊕ Max Voltage 250V
- ⊕ Operating Temperature -55C to +125C
- ⊕ Frequency Range 0-40GHz
- ⊕ VSWR <1.25
- ⊕ Dielectric withstanding Voltage >750V



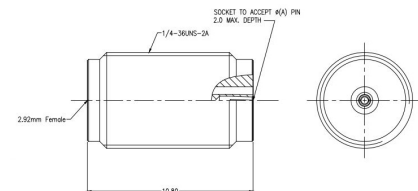
Part Number	Plug or Jack	Stripline or Microstrip Line
RF292DJB	Jack	Stripline
RF292DJA	Jack	Microstrip Line

2.92mm Series Straight Connector



RF292AJA

- ⊕ Max Voltage 250V
- ⊕ Operating Temperature -65C to +165C
- ⊕ Frequency Range 0-40GHz
- ⊕ VSWR <1.30
- ⊕ Dielectric withstanding Voltage >750V



Part Number	Plug or Jack	Flange Mount Length	STA 142, UFB, GORE, 1401
RF292AJA	Jack	0.23mm	-
RF292AJB	Jack	0.30mm	-
RF292AJC	Jack	0.38mm	-
RF292AJE	Jack	0.51mm	-
RF292APG	Plug	-	Yes
RF292AJG	Jack	-	Yes

Electrical:

Insulation Resistance:	>5000M Ω m
Impedance:	50 Ω m
Centre Contact Resistance:	<3.0m Ω ms
Outer Contact Resistance:	<2.0m Ω ms

Mechanical:

Centre Contact Retention:	>20N
Coupling Torque:	0.80Nm to 1.10Nm
Coupling Torque RPC N:	1.36Nm
Cycles:	>500

Material

Body:	Passivation of Stainless Steel, Brass with Gold plating
Contact:	Beryllium Copper
Insulator:	UNFILLED ULTEM 1000
RoHS:	Compliant

Our RF N-Type connector range features a threaded coupling mechanism and are fully interchangeable. These connectors are used in all systems where excellent Radio Frequency connections and mechanical performance is critical. The N-Type connector range meets many customer application demands, including models that support up to 18GHz.

Available for a wide range of coaxial cables including low loss types. Plug versions are also available in straight, right angle and jack versions along with panel mount and bulkhead mount variations.



Key Features:

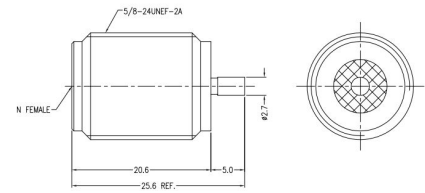
- 50-ohm Impedance
- Insulation resistance >5000MΩ
- Durability >500 Cycles
- Mode free Frequency up to 11 GHz (some Type-N Connectors can also operate up to 18 GHz)
- Available in Plug or Jack
- Beryllium Copper Contact Pin
- Body Material available in Stainless Steel Passivation

N Type Series Bulkhead



RFNAJNH

- Max Voltage 500V
- Operating Temperature -55C to +155C
- Frequency Range 0-18GHz
- VSWR <1.30
- Dielectric withstanding Voltage >1500V



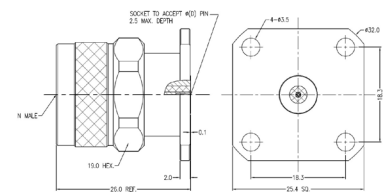
Part Number	Plug or Jack	Pin Diameter	Pin Length
RFNAJNH	Jack	2.70mm	5.00mm

N Type Series Socket 4 Hole Flange



RFNA4PGIF

- Max Voltage 500V
- Operating Temperature -55C to +155C
- Frequency Range 0-18GHz
- VSWR <1.30
- Dielectric withstanding Voltage >1500V
- Available with Extended PTFE



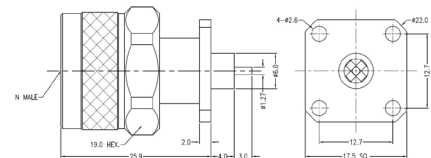
Part Number	Plug or Jack	Flange Mount Length	Mount Hole Distance	Socket Diameter
RFNA4JGID	Jack	25.40mm	18.30mm	0.46mm
RFNA4JGIE	Jack	25.40mm	18.30mm	0.51mm
RFNA4JGIF	Jack	25.40mm	18.30mm	0.91mm
RFNA4JFHD	Jack	17.50mm	12.70mm	0.46mm
RFNA4JFHE	Jack	17.50mm	12.70mm	0.51mm
RFNA4JFHF	Jack	17.50mm	12.70mm	0.91mm
RFNA4JCCD	Jack	12.70mm	8.60mm	0.46mm
RFNA4JCCE	Jack	12.70mm	8.60mm	0.51mm
RFNA4JCCF	Jack	12.70mm	8.60mm	0.91mm
RFNA4PGID	Plug	25.40mm	18.30mm	0.46mm
RFNA4PGIE	Plug	25.40mm	18.30mm	0.51mm
RFNA4PGIF	Plug	25.40mm	18.30mm	0.91mm
RFNA4PFHD	Plug	17.50mm	12.70mm	0.46mm
RFNA4PFHE	Plug	17.50mm	12.70mm	0.51mm
RFNA4PFHF	Plug	17.50mm	12.70mm	0.91mm
RFNA4PCCD	Plug	12.70mm	8.60mm	0.46mm
RFNA4PCCE	Plug	12.70mm	8.60mm	0.51mm
RFNA4PCCF	Plug	12.70mm	8.60mm	0.91mm

N Type Series Pin with Extended PTFE 4 Hole



RFNA4PFHLGIE

- Max Voltage 500V
- Operating Temperature -55C to +155C
- Frequency Range 0-18GHz
- VSWR <1.30
- Dielectric withstanding Voltage >1500V
- Available with Extended PTFE



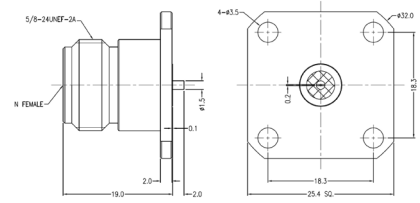
Part Number	Plug or Jack	Flange Mount Length	Mount Hole Distance	Extended PTFE Dia	Extended PTFE Length
RFNA4JGILGIE	Jack	25.40mm	18.30mm	6.00mm	4.00mm
RFNA4JFHLGIE	Jack	17.50mm	12.70mm	6.00mm	4.00mm
RFNA4JCCLGIE	Jack	12.70mm	8.60mm	6.00mm	4.00mm
RFNA4PGILGIE	Plug	25.40mm	18.30mm	6.00mm	4.00mm
RFNA4PFHLGIE	Plug	17.50mm	12.70mm	6.00mm	4.00mm
RFNA4JGILGIE	Jack	25.40mm	18.30mm	6.00mm	4.00mm

N Type Series Pin without Extended PTFE 4 Hole Flange



RFNA4JGIMF

- ⊕ Max Voltage 500V
- ⊕ Operating Temperature -55C to +155C
- ⊕ Frequency Range 0-18GHz
- ⊕ VSWR <1.30
- ⊕ Dielectric withstanding Voltage >1500V
- ⊕ Available with Extended PTFE



Part Number	Plug or Jack	Flange Mount Length	Mount Hole Distance	Pin Diameter	Pin Length
RFNA4JGIMF	Jack	25.40mm	18.30mm	1.50mm	2.00mm
RFNA4JFHMF	Jack	17.50mm	12.70mm	1.50mm	2.00mm
RFNA4JCCMF	Jack	12.70mm	8.60mm	1.50mm	2.00mm
RFNA4PGIMF	Plug	25.40mm	18.30mm	1.50mm	2.00mm
RFNA4PFHMF	Plug	17.50mm	12.70mm	1.50mm	2.00mm

Electrical:

Insulation Resistance:	>5000MΩ
Impedance:	50Ω
Centre Contact Resistance:	<1.0mΩ
Outer Contact Resistance:	<0.2mΩ

Mechanical:

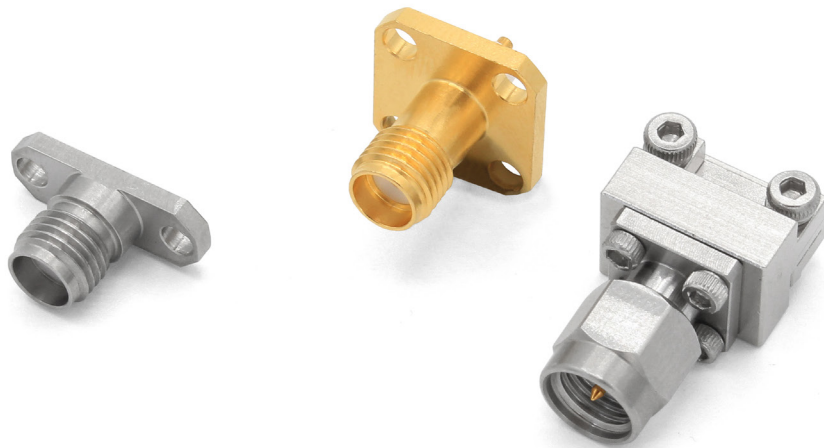
Centre Contact Retention:	>20N
Coupling Torque:	0.80Nm to 1.10Nm
Coupling Torque RPC N:	1.36Nm
Cycles:	>500

Material

Body:	Passivation of Stainless Steel
Contact:	Beryllium Copper
Insulator:	UNFILLED ULTEM 1000/PEI
RoHS:	Compliant

Our SMA connector range are semi-precision and offer a 50 ohms impedance and a 0.25 - 36 threaded coupling. Offering high performance all within a compact SMA (Sub Miniature version A) connector design, frequently used as standard for antennas, devices and various medical applications.

These domestic connectors are also known as F type coaxial connectors and have a 50ohms impedance. Moreover, these sub-miniature sizes are also used in relatively small items of electronic equipment. Typically, 500 mating cycles, but care is needed to keep the mating surfaces clean.



Key Features:

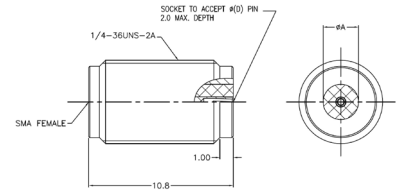
- 50-ohm Impedance
- Insulation resistance >5000MΩ
- Durability >500 Cycles
- Available in Male and Female Threads
- Available in Plug or Jack
- Beryllium Copper Contact Pin
- Body Material available in Stainless Steel Passivation and Brass

SMA Series Bulkhead



RFSMAAJA

- ⊕ Max Voltage 335V
- ⊕ Operating Temperature -65C to +165C
- ⊕ Frequency Range 0-26.5GHz
- ⊕ VSWR <1.30
- ⊕ Dielectric withstanding Voltage >750V



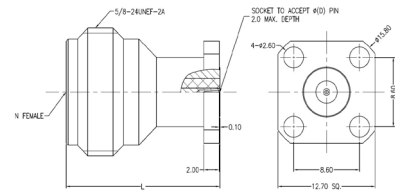
Part Number	Plug or Jack	Socket Diameter
RFSMAAJA	Jack	0.23mm
RFSMAAJB	Jack	0.30mm
RFSMAAJC	Jack	0.38mm
RFSMAAJD	Jack	0.46mm
RFSMAAJE	Jack	0.51mm
RFSMAAJA	Jack	0.23mm

SMA Series Edge Launch Connector



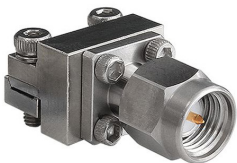
RFSMACJAAA

- ⊕ Max Voltage 335V
- ⊕ Operating Temperature -55C to +155C
- ⊕ Frequency Range 0-26.5GHz
- ⊕ VSWR <1.30
- ⊕ Dielectric withstanding Voltage >750V
- ⊕ Only available in Brass with 10u" Gold Plating



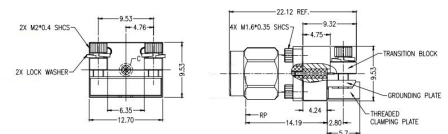
Part Number	Plug or Jack	Pin Diameter	Pin Length	PCB Thickness
RFSMACJAAA	Jack	0.30mm	0.60mm	0.61mm
RFSMACJAAB	Jack	0.30mm	0.60mm	0.87mm
RFSMACJAAC	Jack	0.30mm	0.60mm	1.78mm
RFSMACJABA	Jack	0.30mm	1.22mm	0.61mm
RFSMACJABB	Jack	0.30mm	1.22mm	0.87mm
RFSMACJABC	Jack	0.30mm	1.22mm	1.78mm

SMA Series End Launch Connector



RFSMAEP

- ⊕ Max Voltage 335V
- ⊕ Operating Temperature -55C to +155C
- ⊕ Frequency Range 0-26.5GHz
- ⊕ VSWR <1.40
- ⊕ Dielectric withstanding Voltage >750V



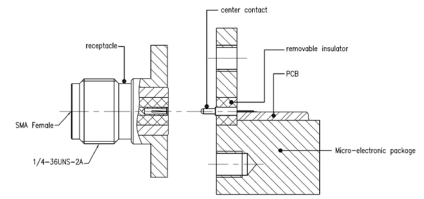
Part Number	Plug or Jack
RFSMAEJ	Jack
RFSMAEP	Plug

SMA Series Socket 4 Hole Flange



RFSMAA4JCCA

- ⊕ Max Voltage 335V
- ⊕ Operating Temperature -65C to +165C
- ⊕ Frequency Range 0-26.5GHz
- ⊕ VSWR <1.30
- ⊕ Dielectric withstanding Voltage >750V



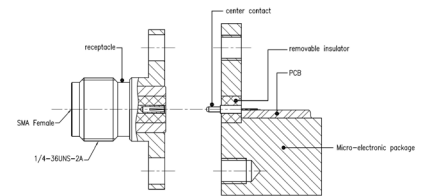
Part Number	Plug or Jack	Flange Mount Length	Mount Hole Distance	Socket Diameter
RFSMAA4JCCA	Jack	12.70mm	8.60mm	0.23mm
RFSMAA4JCCB	Jack	12.70mm	8.60mm	0.30mm
RFSMAA4JCCC	Jack	12.70mm	8.60mm	0.38mm
RFSMAA4JCCD	Jack	12.70mm	8.60mm	0.46mm
RFSMAA4JCCE	Jack	12.70mm	8.60mm	0.51mm
RFSMAA4JAAA	Jack	9.50mm	6.35mm	0.23mm
RFSMAA4JAAB	Jack	9.50mm	6.35mm	0.30mm
RFSMAA4JAAC	Jack	9.50mm	6.35mm	0.38mm
RFSMAA4JAAD	Jack	9.50mm	6.35mm	0.46mm
RFSMAA4JAAE	Jack	9.50mm	6.35mm	0.51mm
RFSMAA4PCCA	Plug	12.70mm	8.60mm	0.23mm
RFSMAA4PCCB	Plug	12.70mm	8.60mm	0.30mm
RFSMAA4PCCC	Plug	12.70mm	8.60mm	0.38mm
RFSMAA4PCCD	Plug	12.70mm	8.60mm	0.46mm
RFSMAA4PCCE	Plug	12.70mm	8.60mm	0.51mm
RFSMAA4PAAA	Plug	9.50mm	6.35mm	0.23mm
RFSMAA4PAAB	Plug	9.50mm	6.35mm	0.30mm
RFSMAA4PAAC	Plug	9.50mm	6.35mm	0.38mm
RFSMAA4PAAD	Plug	9.50mm	6.35mm	0.46mm
RFSMAA4PAAE	Plug	9.50mm	6.35mm	0.51mm

SMA Series Socket 2 Hole Flange:



RFSMAA2JEGA

- ⊕ Max Voltage 335V
- ⊕ Operating Temperature -65C to +165C
- ⊕ Frequency Range 0-26.5GHz
- ⊕ VSWR <1.30
- ⊕ Dielectric withstanding Voltage >750V



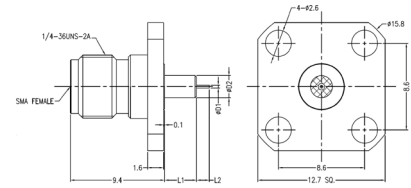
Part Number	Plug or Jack	Flange Mount Length	Mount Hole Distance	Socket Diameter
RFSMAA2JEGA	Jack	15.80mm	12.20mm	0.23mm
RFSMAA2JEGB	Jack	15.80mm	12.20mm	0.30mm
RFSMAA2JEGC	Jack	15.80mm	12.20mm	0.38mm
RFSMAA2JEGD	Jack	15.80mm	12.20mm	0.46mm
RFSMAA2JEGE	Jack	15.80mm	12.20mm	0.51mm
RFSMAA2JCCA	Jack	12.70mm	8.60mm	0.23mm
RFSMAA2JCCB	Jack	12.70mm	8.60mm	0.30mm
RFSMAA2JCCC	Jack	12.70mm	8.60mm	0.38mm
RFSMAA2JCCD	Jack	12.70mm	8.60mm	0.46mm
RFSMAA2JCCE	Jack	12.70mm	8.60mm	0.51mm
RFSMAA2PEGA	Plug	15.80mm	12.20mm	0.23mm
RFSMAA2PEGB	Plug	15.80mm	12.20mm	0.30mm
RFSMAA2PEGC	Plug	15.80mm	12.20mm	0.38mm
RFSMAA2PEGD	Plug	15.80mm	12.20mm	0.46mm
RFSMAA2PEGE	Plug	15.80mm	12.20mm	0.51mm
RFSMAA2PCEA	Plug	12.70mm	8.90mm	0.23mm
RFSMAA2PCEB	Plug	12.70mm	8.90mm	0.30mm
RFSMAA2PCEC	Plug	12.70mm	8.90mm	0.38mm
RFSMAA2PCED	Plug	12.70mm	8.90mm	0.46mm
RFSMAA2PCEE	Plug	12.70mm	8.90mm	0.51mm

SMA Series Pin with Extended PTFE 4 Hole Flange



RFSMAA4JCCACDD

- ⊕ Max Voltage 335V
- ⊕ Operating Temperature -65C to +165C
- ⊕ Frequency Range 0-26.5GHz
- ⊕ VSWR <1.30
- ⊕ Dielectric withstanding Voltage >750V
- ⊕ Flange Mount Length 12.70mm
- ⊕ Mount Hole Distance 8.60mm



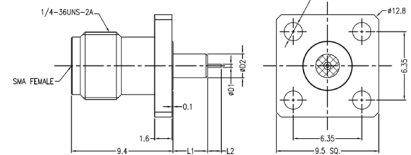
Part Number	Plug or Jack	Pin Diameter	Pin Length	Extended PTFE Diameter	Extended PTFE Length
RFSMAA4JCCACDD	Jack	0.30mm	1.27mm	2.20mm	3.20mm
RFSMAA4JCCDGC1	Jack	0.64mm	3.00mm	2.10mm	15.00mm
RFSMAA4JCCDGF1	Jack	0.64mm	3.00mm	3.90mm	15.00mm
RFSMAA4JCCIDHB	Jack	1.00mm	1.50mm	4.10mm	3.00mm
RFSMAA4JCCIGHE	Jack	1.00mm	3.00mm	4.10mm	4.00mm
RFSMAA4JCCBFGB	Jack	0.38mm	2.00mm	4.00mm	3.00mm
RFSMAA4JCCBFGC	Jack	0.38mm	2.00mm	4.00mm	3.00mm
RFSMAA4JCCBFGD	Jack	0.38mm	2.00mm	4.00mm	4.00mm
RFSMAA4PCCIDHE	Plug	1.00mm	1.50mm	4.10mm	4.00mm
RFSMAA4PCCBFGB	Plug	0.38mm	2.00mm	4.00mm	3.00mm

SMA Series Pin with Extended PTFE 4 Hole Flange



RFSMAA4JAAACDD

- ⊕ Max Voltage 335V
- ⊕ Operating Temperature -65C to +165C
- ⊕ Frequency Range 0-26.5GHz
- ⊕ VSWR <1.30
- ⊕ Dielectric withstanding Voltage >750V
- ⊕ Flange Mount Length 9.50mm
- ⊕ Mount Hole Distance 6.35mm



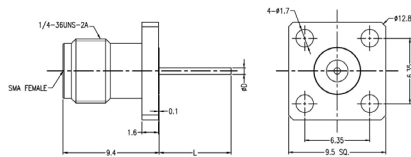
Part Number	Plug or Jack	Pin Diameter	Pin Length	Extended PTFE Diameter	Extended PTFE Length
RFSMAA4JAAACDD	Jack	0.30mm	1.27mm	2.20mm	3.20mm
RFSMAA4JAADGC1	Jack	0.64mm	3.00mm	2.10mm	15.00mm
RFSMAA4JAABFGB	Jack	0.38mm	2.00mm	4.00mm	3.00mm
RFSMAA4JAABFGC	Jack	0.38mm	2.00mm	4.00mm	3.00mm
RFSMAA4JAABFGD	Jack	0.38mm	2.00mm	4.00mm	4.00mm
RFSMAA4PAABFGB	Plug	0.38mm	2.00mm	4.00mm	3.00mm

SMA Series Pin without Extended PTFE 4 Hole Flange



RFSMAA4JAAHR

- ⊕ Max Voltage 335V
- ⊕ Operating Temperature -65C to +165C
- ⊕ Frequency Range 0-26.5GHz
- ⊕ VSWR <1.30
- ⊕ Dielectric withstanding Voltage >750V



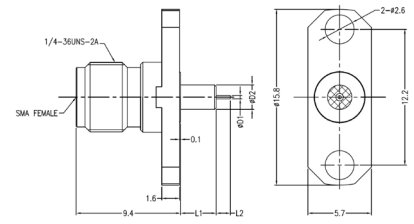
Part Number	Plug or Jack	Flange Mount Length	Mount Hole Distance	Pin Diameter	Pin Length
RFSMAA4JCCDQ	Jack	12.70mm	8.60mm	0.64mm	18.00mm
RFSMAA4JCCHP	Jack	12.70mm	8.60mm	0.87mm	10.92mm
RFSMAA4JCCHR	Jack	12.70mm	8.60mm	0.87mm	26.00mm
RFSMAA4JAADQ	Jack	9.50mm	6.35mm	0.64mm	18.00mm
RFSMAA4JAAHP	Jack	9.50mm	6.35mm	0.87mm	10.92mm
RFSMAA4JAAHR	Jack	9.50mm	6.35mm	0.87mm	26.00mm

SMA Series Pin with Extended PTFE 2 Hole Flange



RFSMAA2JEGACDD

- ⊕ Max Voltage 335V
- ⊕ Operating Temperature -65C to +165C
- ⊕ Frequency Range 0-26.5GHz
- ⊕ VSWR <1.30
- ⊕ Dielectric withstanding Voltage >750V
- ⊕ Flange Mount Length 15.80mm
- ⊕ Mount Hole Distance 12.20mm



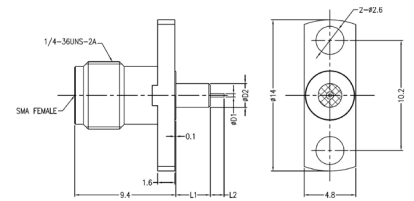
Part Number	Plug or Jack	Pin Diameter	Pin Length	Extended PTFE Diameter	Extended PTFE Length
RFSMAA2JEGACDD	Jack	0.30mm	1.27mm	2.20mm	3.20mm
RFSMAA2JEGDGCI	Jack	0.64mm	3.00mm	2.10mm	15.00mm
RFSMAA2JEGDGF1	Jack	0.64mm	3.00mm	3.90mm	15.00mm
RFSMAA2JEGIDHB	Jack	1.00mm	1.50mm	4.10mm	3.00mm
RFSMAA2JEGIGHE	Jack	1.00mm	3.00mm	4.10mm	4.00mm
RFSMAA2JEGBFGB	Jack	0.38mm	2.00mm	4.00mm	3.00mm
RFSMAA2JEGFFGE	Jack	0.80mm	2.00mm	4.00mm	4.00mm
RFSMAA2PEGIDHE	Plug	1.00mm	1.50mm	4.10mm	4.00mm
RFSMAA2PEGBFGB	Plug	0.38mm	2.00mm	4.00mm	3.00mm

SMA Series Pin with Extended PTFE 2 Hole Flange



RFSMAA2JDFACDD

- ⊕ Max Voltage 335V
- ⊕ Operating Temperature -65C to +165C
- ⊕ Frequency Range 0-26.5GHz
- ⊕ VSWR <1.30
- ⊕ Dielectric withstanding Voltage >750V
- ⊕ Flange Mount Length 14.00mm
- ⊕ Mount Hole Distance 10.20mm



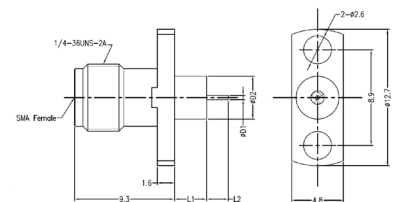
Part Number	Plug or Jack	Pin Diameter	Pin Length	Extended PTFE Diameter	Extended PTFE Length
RFSMAA2JDFACDD	Jack	0.30mm	1.27mm	2.20mm	3.20mm
RFSMAA2JDFDGCI	Jack	0.64mm	3.00mm	2.10mm	15.00mm
RFSMAA2JDFBFGB	Jack	0.38mm	2.00mm	4.00mm	3.00mm
RFSMAA2JDFFFGE	Jack	0.80mm	2.00mm	4.00mm	4.00mm
RFSMAA2PDFBFGB	Plug	0.38mm	2.00mm	4.00mm	3.00mm

SMA Series Pin with Extended PTFE 2 Hole Flange



RFSMAA2JEGBFGB

- ⊕ Max Voltage 335V
- ⊕ Operating Temperature -65C to +165C
- ⊕ Frequency Range 0-26.5GHz
- ⊕ VSWR <1.30
- ⊕ Dielectric withstanding Voltage >750V
- ⊕ Flange Mount Length 12.70mm
- ⊕ Mount Hole Distance 8.90mm



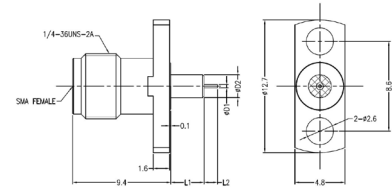
Part Number	Plug or Jack	Pin Diameter	Pin Length	Extended PTFE Diameter	Extended PTFE Length
RFSMAA2JCEBFGB	Jack	0.38mm	2.00mm	4.00mm	3.00mm
RFSMAA2JCEFFGE	Jack	0.80mm	2.00mm	4.00mm	4.00mm
RFSMAA2PCEBFGB	Plug	0.38mm	2.00mm	4.00mm	3.00mm

SMA Series Pin with Extended PTFE 2 Hole Flange



RFSMAA2JCCACDD

- ⊕ Max Voltage 335V
- ⊕ Operating Temperature -65C to +165C
- ⊕ Frequency Range 0-26.5GHz
- ⊕ VSWR <1.30
- ⊕ Dielectric withstanding Voltage >750V
- ⊕ Flange Mount Length 12.70mm
- ⊕ Mount Hole Distance 8.60mm



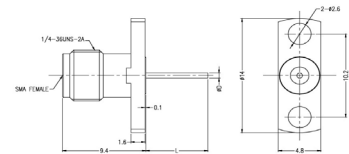
Part Number	Plug or Jack	Pin Diameter	Pin Length	Extended PTFE Diameter	Extended PTFE Length
RFSMAA2JCCACDD	Jack	0.30mm	1.27mm	2.20mm	3.20mm
RFSMAA2JCCDGC1	Jack	0.64mm	3.00mm	2.10mm	15.00mm
RFSMAA2JCCDGF1	Jack	0.64mm	3.00mm	3.90mm	15.00mm
RFSMAA2JCCBFGB	Jack	0.38mm	2.00mm	4.00mm	3.00mm
RFSMAA2JCCFFGE	Jack	0.80mm	2.00mm	4.00mm	4.00mm

Pin Version without Extended PTFE 2 Hole Flange



RFSMAA2JDFHP

- ⊕ Max Voltage 335V
- ⊕ Operating Temperature -65C to +165C
- ⊕ Frequency Range 0-26.5GHz
- ⊕ VSWR <1.30
- ⊕ Dielectric withstanding Voltage >750V



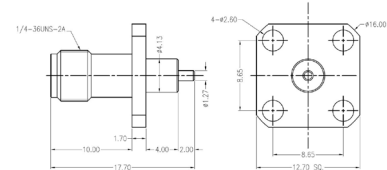
Part Number	Plug or Jack	Flange Mount Length	Mount Hole Distance	Pin Diameter	Pin Length
RFSMAA2JEGDQ	Jack	15.80mm	12.20mm	0.64mm	18.00mm
RFSMAA2JEGHP	Jack	15.80mm	12.20mm	0.87mm	10.92mm
RFSMAA2JEGHR	Jack	15.80mm	12.20mm	0.87mm	26.00mm
RFSMAA2JCCDQ	Jack	12.70mm	8.60mm	0.64mm	18.00mm
RFSMAA2JCCHP	Jack	12.70mm	8.60mm	0.87mm	10.92mm
RFSMAA2JCCHR	Jack	12.70mm	8.60mm	0.87mm	26.00mm
RFSMAA2JDFDQ	Jack	14.00mm	10.20mm	0.64mm	18.00mm
RFSMAA2JDFHP	Jack	14.00mm	10.20mm	0.87mm	10.92mm

SMA Series Flange Mount (RoundPost)



RFSMAA4JCDLF

- ⊕ Max Voltage 350V
- ⊕ Operating Temperature -65C to +165C
- ⊕ Frequency Range 0-18GHz
- ⊕ VSWR <1.50 at 12-18GHz
- ⊕ Dielectric withstanding Voltage >750V
- ⊕ Only available in Brass with 3u" Gold plating



Part Number	Plug or Jack	Flange Mount Length	Mount Hole Distance	Pin Diameter	Pin Length
RFSMAA4JCDLF	Jack	12.70mm	8.65mm	1.27mm	2.00mm

Electrical:

Insulation Resistance:	>5000MΩ
Impedance:	50Ω
Centre Contact Resistance:	<3.0mΩ
Outer Contact Resistance:	<2.0mΩ

Mechanical:

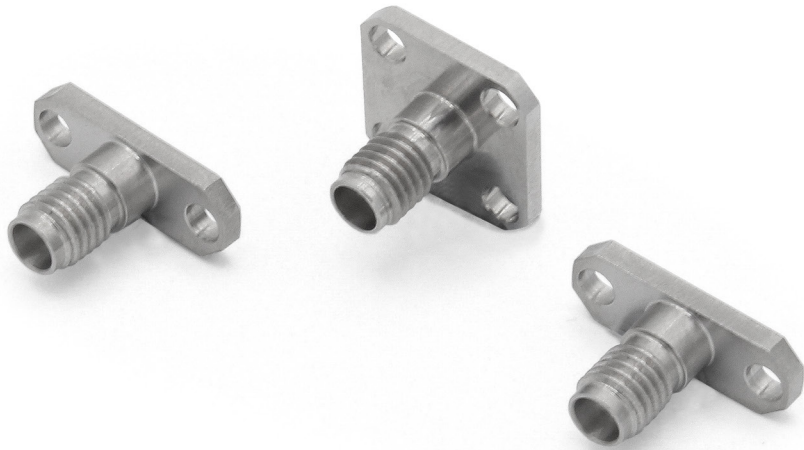
Centre Contact Retention:	>20N
Coupling Torque:	0.80Nm to 1.10Nm
Coupling Torque RPC N:	1.36Nm
Cycles:	>500

Material

Body:	Passivation of Stainless Steel, Brass with Gold plating
Contact:	Beryllium Copper
Insulator:	Adapter ASTM D 1710 ULTEM 1000
RoHS:	Compliant

The Bulgin SSMA connector series are micro-miniature, precision connectors with excellent electrical performance. Available for both semi-rigid and flexible coaxial cables, they are ideal for high-frequency applications.

The SSMA connector range offers a smaller version of the SMA connector and is widely used in microwave communications. It has stainless steel construction that provides mechanical ruggedness for high reliability in a compact size. These connectors are widely used in Radar, Military, Aerospace, Instrumentation, Test and Measurement and Satellite Communication Equipment (SATCOM).



Key Features:

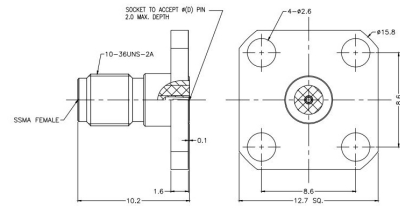
- 50-ohm Impedance
- Insulation resistance >5000MΩ
- Durability >500 Cycles
- Available in Male and Female Threads
- Available in Plug or Jack
- Beryllium Copper Contact Pin
- Body Material available in Stainless Steel Passivation

SSMA Series Socket 4 Hole Flange



RFSSMAA4JCCA

- ⊕ Max Voltage 335V
- ⊕ Operating Temperature -65C to +165C
- ⊕ Frequency Range 0-40GHz
- ⊕ VSWR <1.30
- ⊕ Dielectric withstanding Voltage >500V
- ⊕ Available with Extended PTFE



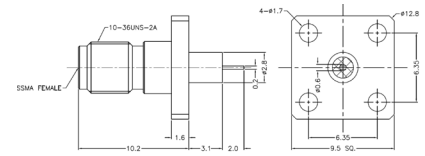
Part Number	Plug or Jack	Flange Mount Length	Mount Hole Distance	Socket Diameter
RFSSMAA4JCCA	Jack	12.70mm	8.60mm	0.23mm
RFSSMAA4JCCB	Jack	12.70mm	8.60mm	0.30mm
RFSSMAA4JCCC	Jack	12.70mm	8.60mm	0.38mm
RFSSMAA4JCCD	Jack	12.70mm	8.60mm	0.46mm
RFSSMAA4JCCE	Jack	12.70mm	8.60mm	0.51mm
RFSSMAA4JAAA	Jack	9.50mm	6.35mm	0.23mm
RFSSMAA4JAAB	Jack	9.50mm	6.35mm	0.30mm
RFSSMAA4JAAC	Jack	9.50mm	6.35mm	0.38mm
RFSSMAA4JAAD	Jack	9.50mm	6.35mm	0.46mm
RFSSMAA4JAAE	Jack	9.50mm	6.35mm	0.51mm

SSMA Series Pin with Extended PTFE 4 Hole Flange



RFSSMAA4JAACFEC

- ⊕ Max Voltage 335V
- ⊕ Operating Temperature -65C to +165C
- ⊕ Frequency Range 0-40GHz
- ⊕ VSWR <1.30
- ⊕ Dielectric withstanding Voltage >500V
- ⊕ Available with Extended PTFE
- ⊕ Flange Mount Length 9.50mm
- ⊕ Mount Hole Distance 6.35mm



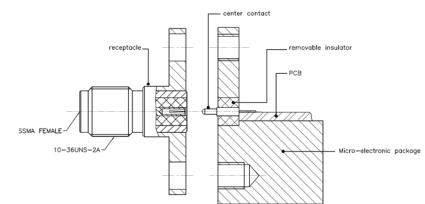
Part Number	Plug or Jack	Pin Diameter	Pin Length	Extended PTFE Diameter	Extended PTFE Length
RFSSMAA4JAACFEC	Jack	0.60mm	2.00mm	2.80mm	3.10mm

SSMA Series Socket 2 Hole Flange



RFSSMAA2JEGA

- ⊕ Max Voltage 335V
- ⊕ Operating Temperature -65C to +165C
- ⊕ Frequency Range 0-40GHz
- ⊕ VSWR <1.30
- ⊕ Dielectric withstanding Voltage >500V
- ⊕ Available with Extended PTFE



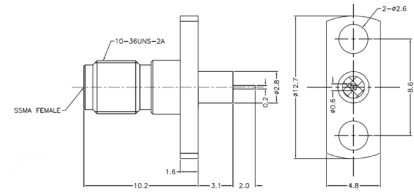
Part Number	Plug or Jack	Flange Mount Length	Mount Hole Distance	Socket Diameter
RFSSMAA2JEGA	Jack	15.80mm	12.20mm	0.23mm
RFSSMAA2JEGB	Jack	15.80mm	12.20mm	0.30mm
RFSSMAA2JEGC	Jack	15.80mm	12.20mm	0.38mm
RFSSMAA2JEGD	Jack	15.80mm	12.20mm	0.46mm
RFSSMAA2JEJE	Jack	15.80mm	12.20mm	0.51mm
RFSSMAA2JCEA	Jack	12.70mm	8.90mm	0.23mm
RFSSMAA2JCEB	Jack	12.70mm	8.90mm	0.30mm
RFSSMAA2JCEC	Jack	12.70mm	8.90mm	0.38mm
RFSSMAA2JCED	Jack	12.70mm	8.90mm	0.46mm
RFSSMAA2JCEE	Jack	12.70mm	8.90mm	0.51mm

SSMA Series Pin with Extended PTFE 2 Hole Flange



RFSSMAA2JCCAFEC

- ⊕ Max Voltage 335V
- ⊕ Operating Temperature -65C to +165C
- ⊕ Frequency Range 0-40GHz
- ⊕ VSWR <1.30
- ⊕ Dielectric withstanding Voltage >500V
- ⊕ Available with Extended PTFE
- ⊕ Flange Mount Length 12.70mm
- ⊕ Mount Hole Distance 8.60mm



Part Number	Plug or Jack	Pin Diameter	Pin Length	Extended PTFE Diameter	Extended PTFE Length
RFSSMAA2JCCAFEC	Jack	0.30mm	2.00mm	2.80mm	3.10mm

Electrical:

Insulation Resistance:	>5000M Ω m
Impedance:	50 Ω m
Centre Contact Resistance:	<5.0m Ω ms
Outer Contact Resistance:	<2.5m Ω ms

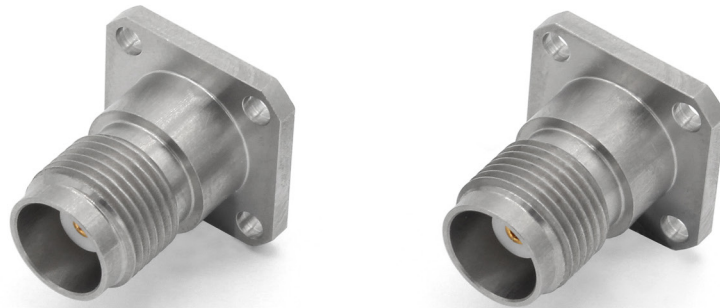
Mechanical:

Centre Contact Retention:	>20N
Coupling Torque:	0.80Nm to 1.10Nm
Coupling Torque RPC N:	1.36Nm
Cycles:	>500

Material

Body:	Passivation of Stainless Steel
Contact:	Beryllium Copper
Insulator:	Adapter ASTM D 1710
RoHS:	Compliant

Our **TNCA** connector range offers **50ohms** precision connectors. Designed with **excellent characteristics** over the **full frequency range up to 18GHz**, the TNCA connector range are also mechanically compatible with TNC connectors.



Key Features:

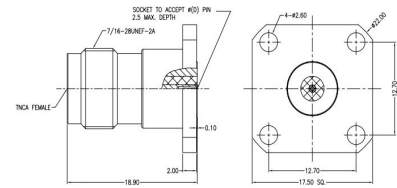
- ⬢ 50-ohm Impedance
- ⬢ Insulation resistance >5000MΩ
- ⬢ Durability >500 Cycles
- ⬢ Available in Male and Female Threads
- ⬢ Available in Plug or Jack
- ⬢ Beryllium Copper Contact Pin
- ⬢ Body Material available in Stainless Steel Passivation

TNCA Series Socket 4 Hole Flange



RFTNCAA4JFHD

- ⊕ Max Voltage 500V
- ⊕ Operating Temperature -65C to +165C
- ⊕ Frequency Range 0-18GHz
- ⊕ VSWR <1.30
- ⊕ Dielectric withstanding Voltage >500V



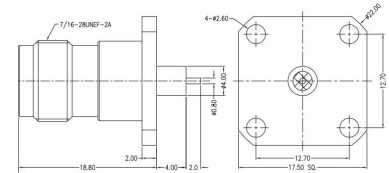
Part Number	Plug or Jack	Flange Mount Length	Mount Hole Distance	Socket Diameter
RFTNCAA4JFHD	Jack	17.50mm	12.70mm	0.46mm
RFTNCAA4JFHE	Jack	17.50mm	12.70mm	0.51mm
RFTNCAA4JFHF	Jack	17.50mm	12.70mm	0.91mm
RFTNCAA4JCCD	Jack	12.70mm	8.60mm	0.46mm
RFTNCAA4JCCE	Jack	12.70mm	8.60mm	0.51mm
RFTNCAA4JCCF	Jack	12.70mm	8.60mm	0.91mm
RFTNCAA4PFHD	Plug	17.50mm	12.70mm	0.46mm
RFTNCAA4PFHE	Plug	17.50mm	12.70mm	0.51mm
RFTNCAA4PFHF	Plug	17.50mm	12.70mm	0.91mm

TNCA Series Pin with Extended PTFE 4 Hole Flange



RFTNCAA4JFHFFGE

- ⊕ Max Voltage 500V
- ⊕ Operating Temperature -65C to +165C
- ⊕ Frequency Range 0-11GHz
- ⊕ VSWR <1.30
- ⊕ Dielectric withstanding Voltage >1500V
- ⊕ Available with Extended PTFE
- ⊕ Flange Mount Length 17.50mm
- ⊕ Mount Hole Distance 12.70mm



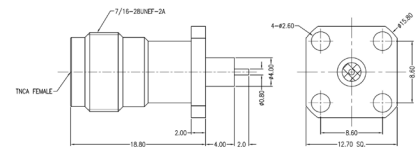
Part Number	Plug or Jack	Pin Diameter	Pin Length	Extended PTFE Diameter	Extended PTFE Length
RFTNCAA4JFHFFGE	Jack	0.80mm	2.00mm	4.00mm	4.00mm

TNCA Series Pin with Extended PTFE 4 Hole Flange



RFTNCAA4JCCFFGE

- ⊕ Max Voltage 500V
- ⊕ Operating Temperature -65C to +165C
- ⊕ Frequency Range 0-11GHz
- ⊕ VSWR <1.30
- ⊕ Dielectric withstanding Voltage >1500V
- ⊕ Available with Extended PTFE
- ⊕ Flange Mount Length 12.70mm
- ⊕ Mount Hole Distance 8.60mm



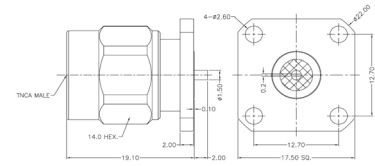
Part Number	Plug or Jack	Pin Diameter	Pin Length	Extended PTFE Diameter	Extended PTFE Length
RFTNCAA4JCCFFGE	Jack	0.80mm	2.00mm	4.00mm	4.00mm

TNCA Series Pin without Extended PTFE 4 Hole Flange:



RFTNCAA4PFHMF

- ⊕ Max Voltage 500V
- ⊕ Operating Temperature -65C to +165C
- ⊕ Frequency Range 0-11GHz
- ⊕ VSWR <1.30
- ⊕ Dielectric withstanding Voltage >1500V
- ⊕ Available with Extended PTFE



Part Number	Plug or Jack	Flange Mount Length	Mount Hole Distance	Pin Diameter	Pin Length
RFTNCAA4JFHMF	Jack	17.50mm	12.70mm	1.50mm	2.00mm
RFTNCAA4JCCMF	Jack	12.70mm	8.60mm	1.50mm	2.00mm
RFTNCAA4PFHMF	Plug	17.50mm	12.70mm	1.50mm	2.00mm

Electrical:

Insulation Resistance:	>5000M Ω m
Impedance:	50 Ω m
Centre Contact Resistance:	TNCA
Outer Contact Resistance:	<0.2m Ω ms

Mechanical:

Centre Contact Retention:	>20N
Coupling Torque:	0.80Nm to 1.10Nm
Coupling Torque RPC N:	1.36Nm
Cycles:	>500

Material

Body:	Passivation of Stainless Steel, Brass with Gold Plating
Contact:	Beryllium Copper
Insulator:	Adapter ASTM D 1710 & PEI
RoHS:	Compliant

Our RF Adapter Series offers Straight series connectors in: 1.85mm, 2.40mm, 2.92mm, 3.50mm, N Type, SMA, TNC, BNC, APC-7, Flange Mount and Right Angle.

The RF Adapters are used to transfer signals from one connector interface to another. They are RoHS compliance and manufactured from Stainless Steel with Beryllium Copper contacts.



Key Features:

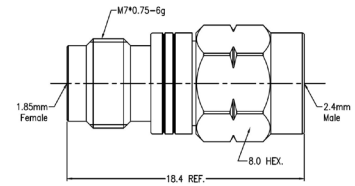
- ⊕ 50-ohm Impedance
- ⊕ Insulation resistance >5000MΩ
- ⊕ Durability >500 Cycles
- ⊕ Available in Male and Female Threads
- ⊕ Available in Plug or Jack
- ⊕ Beryllium Copper Contact Pin
- ⊕ Body Material available in Stainless Steel Passivation

1.85mm Adapters Series Straight



RFAA185J240P

- ⊕ Max Voltage 150V
- ⊕ Operating Temperature -40C to +65C
- ⊕ VSWR <1.25
- ⊕ Dielectric withstanding Voltage >500V
- ⊕ Frequency Range 0-65GHz



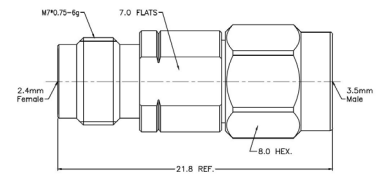
Part Number	End 1	Plug or Jack	End 2	Plug or Jack
RFAA185J185J	185	Jack	185	Jack
RFAA185P185J	185	Plug	185	Jack
RFAA185P185P	185	Plug	185	Plug
RFAA185J240J	185	Jack	240	Jack
RFAA185P240P	185	Plug	240	Plug
RFAA185P240J	185	Plug	240	Jack
RFAA185J240P	185	Jack	240	Plug
RFAA185J292J	185	Jack	292	Jack
RFAA185J292P	185	Jack	292	Plug
RFAA185P292J	185	Plug	292	Jack
RFAA185P292P	185	Plug	292	Plug
RFAA185J350J	185	Jack	350	Jack
RFAA185J350P	185	Jack	350	Plug
RFAA185P350J	185	Plug	350	Jack
RFAA185P350P	185	Plug	350	Plug

2.40mm Adapter Series Straight



RFAA240J350P

- ⊕ Max Voltage 150V
- ⊕ Operating Temperature -40C to +85C
- ⊕ VSWR <1.20
- ⊕ Dielectric withstanding Voltage >500V
- ⊕ Frequency Range 0-50GHz



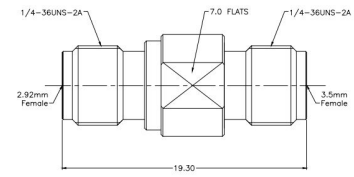
Part Number	End 1	Plug or Jack	End 2	Plug or Jack
RFAA240J240J	240	Jack	240	Jack
RFAA240P240P	240	Plug	240	Plug
RFAA240P240J	240	Plug	240	Jack
RFAA240J292J	240	Jack	292	Jack
RFAA240J292P	240	Jack	292	Plug
RFAA240P292J	240	Plug	292	Jack
RFAA240P292P	240	Plug	292	Plug
RFAA240P350J	240	Plug	350	Jack
RFAA240J350P	240	Jack	350	Plug
RFAA240P350J	240	Plug	350	Jack
RFAA240P350P	240	Plug	350	Plug

2.92mm Adapter Series Straight



RFAA292J292J

- Max Voltage 250V
- Operating Temperature -40C to +85C
- VSWR <1.20
- Dielectric withstanding Voltage >750V
- Frequency Range 0-40GHz



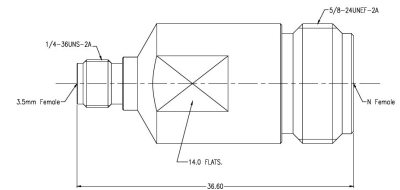
Part Number	End 1	Plug or Jack	End 2	Plug or Jack
RFAA292J292P	292	Jack	292	Plug
RFAA292J292J	292	Jack	292	Jack
RFAA292P292P	292	Plug	292	Plug
RFAA292J350J	292	Jack	350	Jack
RFAA292J350P	292	Jack	350	Plug
RFAA292P350J	292	Plug	350	Jack
RFAA292P350P	292	Plug	350	Plug

3.50mm Adapter Series Straight



RFAA350JNJ

- Max Voltage 250V
- Operating Temperature -40C to +85C
- VSWR <1.15
- Dielectric withstanding Voltage >750V
- Frequency Range 0-33GHz



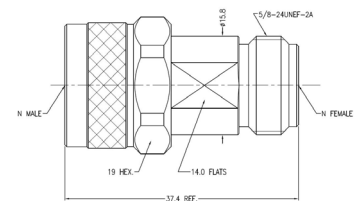
Part Number	End 1	Plug or Jack	End 2	Plug or Jack
RFAA350J350J	350	Jack	350	Jack
RFAA350J350P	350	Jack	350	Plug
RFAA350P350P	350	Plug	350	Plug
RFAA350JNJ	350	Jack	N	Jack
RFAA350JNP	350	Jack	N	Plug
RFAA350PNJ	350	Plug	N	Jack
RFAA350PNP	350	Plug	N	Plug

N Type Adapter Series Straight



RFAANPNJ

- Max Voltage 500V
- Operating Temperature -40C to +85C
- VSWR <1.15
- Dielectric withstanding Voltage >1500V
- Frequency Range 0-18GHz



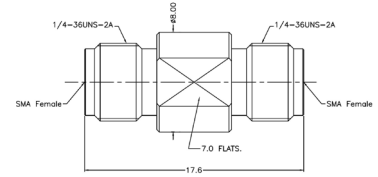
Part Number	End 1	Plug or Jack	End 2	Plug or Jack
RFAANJNJ	N	Jack	N	Jack
RFAANPNJ	N	Plug	N	Jack
RFAANPNP	N	Plug	N	Plug

SMA Adapter Series Straight



RFAASMAJSMAJ

- Max Voltage 335V
- Operating Temperature -65C to +165C
- VSWR <1.15
- Dielectric withstanding Voltage >750
- Frequency Range 0-26.5GHz



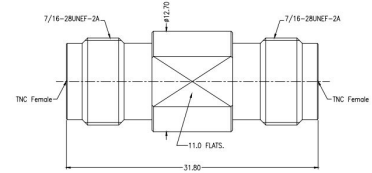
Part Number	End 1	Plug or Jack	End 2	Plug or Jack
RFAASMAJSMAJ	SMA	Jack	SMA	Jack
RFAASMAPSMAJ	SMA	Plug	SMA	Jack
RFAASMAPSMAP	SMA	Plug	SMA	Plug
RFAASMAJNJ	SMA	Jack	N	Jack
RFAASMAJNP	SMA	Jack	N	Plug
RFAASMAPNP	SMA	Plug	N	Plug
RFAASMAPNJ	SMA	Plug	N	Jack

TNC Adapter Series Straight



RFAATNCJTNCJ

- Max Voltage 500V
- Operating Temperature -65C to +165C
- VSWR <1.15
- Dielectric withstanding Voltage >1500V
- Frequency Range 0-11GHz



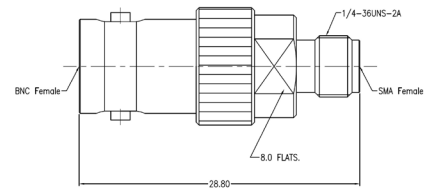
Part Number	End 1	Plug or Jack	End 2	Plug or Jack
RFAATNCJTNCJ	TNC	Jack	TNC	Jack
RFAATNCJTNCJ	TNC	Jack	TNC	Plug
RFAATNCPTNCJ	TNC	Plug	TNC	Plug
RFAATNCJNP	TNC	Plug	N	Jack

BNC Adapter Series Straight



RFAABNCJSMAJ

- Max Voltage 335V
- Operating Temperature -65C to +165C
- VSWR <1.15
- Dielectric withstanding Voltage >750V
- Frequency Range 0-8GHz



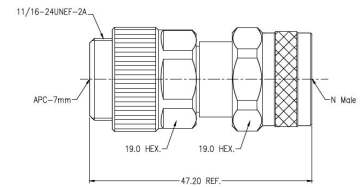
Part Number	End 1	Plug or Jack	End 2	Plug or Jack
RFAABNCJSMAJ	BNC	Jack	SMA	Jack
RFAABNCPSMAJ	BNC	Plug	SMA	Jack
RFAABNCJSMAP	BNC	Jack	SMA	Plug
RFAABNCPSMAP	BNC	Plug	SMA	Plug

APC-7 Adapter Series Straight



RFAAAPC7NP

- Max Voltage 1000V
- Operating Temperature -40C to +85C
- VSWR <1.15
- Dielectric withstanding Voltage >2500V
- Frequency Range 0-18GHz



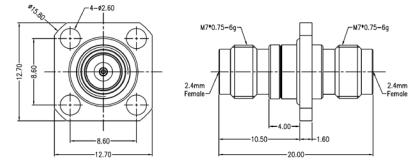
Part Number	End 1	Plug or Jack	End 2	Plug or Jack
RFAAAPC7NJ	APC7	-	N	Jack
RFAAAPC7NP	APC7	-	N	Plug

Adapter Series Flange Mount
2.40mm Adapter



RFAA4240J240J

- Max Voltage 150V
- Operating Temperature -40C to +85C
- VSWR <1.20
- Dielectric withstanding Voltage >500V
- Frequency Range 0-50GHz



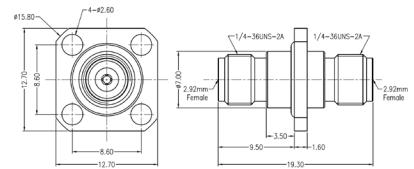
Part Number	End 1	Plug or Jack	End 2	Plug or Jack
RFAA4240J240J	240	Jack	240	Jack

2.92mm Adapter Series Flange Mount



RFAA4292J292J

- Max Voltage 250V
- Operating Temperature -40C to +85C
- VSWR <1.20
- Dielectric withstanding Voltage >750V
- Frequency Range 0-40GHz



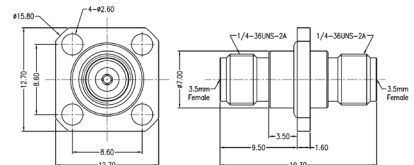
Part Number	End 1	Plug or Jack	End 2	Plug or Jack
RFAA4292J292J	240	Jack	240	Jack

3.50mm Adapter Series Flange Mount



RFAA4350J350J

- Max Voltage 335V
- Operating Temperature -40C to +85C
- VSWR <1.20
- Dielectric withstanding Voltage >750V
- Frequency Range 0-33GHz



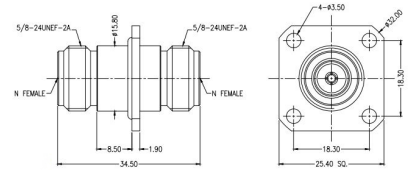
Part Number	End 1	Plug or Jack	End 2	Plug or Jack
RFAA4350J350J	350	Jack	350	Jack

N Type Adapter Series Flange Mount



RFAA4NJNI

- Max Voltage 500V
- Operating Temperature -40C to +85C
- VSWR <1.15
- Dielectric withstanding Voltage >1500V
- Frequency Range 0-18GHz



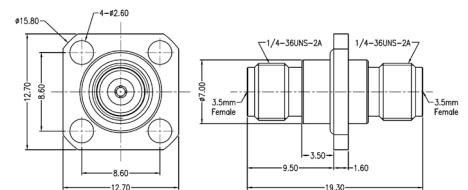
Part Number	End 1	Plug or Jack	End 2	Plug or Jack
RFAA4NJNI	N	Jack	N	Jack
RFAA4NJNI	N	Jack	N	Plug

SMA Adapter Series Flange Mount



RFAA4350J350J

- Max Voltage 335V
- Operating Temperature -65C to +165C
- VSWR <1.15
- Dielectric withstanding Voltage >750V
- Frequency Range 0-26.5GHz



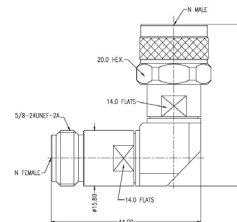
Part Number	End 1	Plug or Jack	End 2	Plug or Jack	SMA or N Side
RFAA4SMAJSMAJ	SMA	Jack	SMA	Jack	-
RFAA4SMAJSMAJ	SMA	Jack	SMA	Jack	-
RFAA4SMAPMAJ	SMA	Plug	SMA	Jack	-
RFAA4SMAPSMAP	SMA	Plug	SMA	Plug	-
RFAA4SMAJNJA	SMA	Jack	N	Jack	SMA Side
RFAA4SMAJNJB	SMA	Jack	N	Jack	N Side
RFAA4SMAPNJA	SMA	Plug	N	Jack	SMA Side
RFAA4SMAPNJB	SMA	Plug	N	Jack	N Side
RFAA4SMAPNP	SMA	Plug	N	Plug	-

N Type Adapter Series Right Angle



RFABNJNP

- Max Voltage 500V
- Operating Temperature -40C to +85C
- VSWR <1.25
- Dielectric withstanding Voltage >1500V
- Frequency Range 0-18GHz



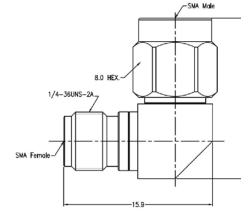
Part Number	End 1	Plug or Jack	End 2	Plug or Jack
RFABNJNI	N	Jack	N	Jack
RFABNJNP	N	Jack	N	Plug
RFABNPNP	N	Plug	N	Plug

SMA Adapter Series Right Angle



RFABSMAJSMAP

- ⬡ Max Voltage 335V
- ⬡ Operating Temperature -65C to +165C
- ⬡ VSWR <1.25
- ⬡ Dielectric withstanding Voltage >750V
- ⬡ Frequency Range 0-26.5GHz



Part Number	End 1	Plug or Jack	End 2	Plug or Jack
RFABSMAJSMAJ	SMA	Jack	SMA	Jack
RFABSMAJSMAP	SMA	Jack	SMA	Plug
RFABSMAJSMAP	SMA	Plug	SMA	Plug

Electrical:

Insulation Resistance:	>5000MΩ
Impedance:	50Ω
Centre Contact Resistance:	<1.5mΩ
Outer Contact Resistance:	<0.2mΩ

Mechanical:

Centre Contact Retention:	>20N
Coupling Torque:	0.80Nm to 1.10Nm
Coupling Torque (APC-7) RPC 7:	0.70Nm to 1.10Nm
Coupling Torque RPC N:	1.36Nm
Cycles:	>500
Cycles (APC-7) RPC N:	>500
Cycles (APC-7) RPC 7:	>5000

Material

Body:	Passivation of Stainless Steel
Contact:	Beryllium Copper
Insulator:	UNFILLED ULTEM 1000/PEI Adapter ASTM D 1710 & PEI
RoHS:	Compliant

Our RF Termination Series is available in 2.40mm, 2.92mm, 3.50mm, N-type and SMA series. The range also includes standard feed-thru load and RF load versions with male, female, jack and plug genders.

Our terminations (also known as RF loads or Dummy loads) have some precision designs and offer a frequency range as high as 50 GHz.



Key Features:

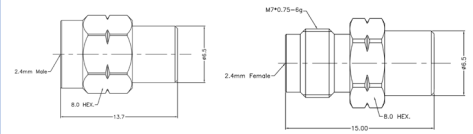
- ⊗ 50-ohm Impedance
- ⊗ Insulation resistance >5000MΩ
- ⊗ Durability >500 Cycles
- ⊗ Available in Male and Female Threads
- ⊗ Available in Plug or Jack
- ⊗ Beryllium Copper Contact Pin
- ⊗ Body Material available in Stainless Steel Passivation

2.40mm Termination Series



RFTERM240P05W

- ⊕ Max Voltage 335V
- ⊕ Operating Temperature -65C to +165C (0.5W) -55C to +125C (1W)
- ⊕ Frequency Range 0-40GHz
- ⊕ VSWR <1.20 (0.5W) <1.25 (1W)
- ⊕ Dielectric withstanding Voltage >750V
- ⊕ Available in 0.5W and 1W



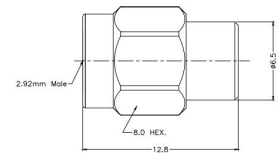
Part Number	Fitting	Plug or Jack	Watts
RFTERM240P05W	240	Plug	05W
RFTERM240J05W	240	Jack	05W
RFTERM240P1W	240	Plug	1W
RFTERM240J1W	240	Jack	1W

2.92mm Termination Series



RFTERM292P05W

- ⊕ Max Voltage 335V
- ⊕ Operating Temperature -65C to +165C (0.5W) -55C to +125C (1W)
- ⊕ Frequency Range 0-40GHz
- ⊕ VSWR <1.15 (1W) <1.20 (2W)
- ⊕ Dielectric withstanding Voltage >750V
- ⊕ Available in 1W and 2W



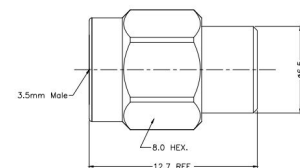
Part Number	Fitting	Plug or Jack	Watts
RFTERM292P05W	292	Plug	05W
RFTERM292J05W	292	Jack	05W
RFTERM292P1W	292	Plug	1W
RFTERM292J1W	292	Jack	1W

3.50mm Termination Series



RFTERM350P1W

- ⊕ Max Voltage 335V
- ⊕ Operating Temperature -65C to +165C
- ⊕ Frequency Range 0-40GHz
- ⊕ VSWR <1.15 (1W) <1.20 (2W)
- ⊕ Dielectric withstanding Voltage >750V
- ⊕ Available in 1W and 2W



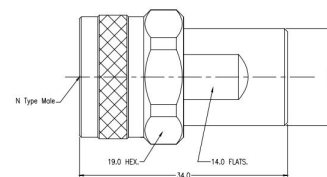
Part Number	Fitting	Plug or Jack	Watts
RFTERM350P1W	350	Plug	1W
RFTERM350J1W	350	Jack	1W
RFTERM350P2W	350	Plug	2W
RFTERM350J2W	350	Jack	2W

N Type Termination Series



RFTERMNP2W

- ⊕ Max Voltage 335V
- ⊕ Operating Temperature -40C to +85C
- ⊕ Frequency Range 0-18GHz
- ⊕ VSWR <1.20
- ⊕ Dielectric withstanding Voltage >1500V
- ⊕ Available in 2W



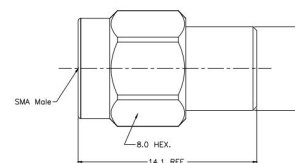
Part Number	Fitting	Plug or Jack	Watts
RFTERMNP2W	N	Plug	2W
RFTERMNJ2W	N	Jack	2W

SMA Termination Series



RFTERMSMAP1W

- ⊕ Max Voltage 335V
- ⊕ Operating Temperature -65C to +165C
- ⊕ Frequency Range 0-18GHz
- ⊕ VSWR <1.15 (1W) <1.20 (2W)
- ⊕ Dielectric withstanding Voltage >750V
- ⊕ Available in 1W and 2W



Part Number	Fitting	Plug or Jack	Watts
RFTERMSMAP1W	SMA	Plug	1W
RFTERMSMAJ1W	SMA	Jack	1W
RFTERMSMAP2W	SMA	Plug	2W
RFTERMSMAJ2W	SMA	Jack	2W

Electrical:

Insulation Resistance:	>5000M Ω m
Impedance:	50 Ω m
Centre Contact Resistance:	<3.0m Ω ms
Outer Contact Resistance:	<2.0m Ω ms

Mechanical:

Centre Contact Retention:	>20N
Coupling Torque:	0.80Nm to 1.10Nm
Coupling Torque (APC-7) RPC 7:	0.70Nm to 1.10Nm
Coupling Torque RPC N:	1.36Nm
Cycles:	>500
Cycles (APC-7) RPC N:	>500
Cycles (APC-7) RPC 7:	>5000

Material

Body:	Passivation of Stainless Steel
Contact:	Beryllium Copper
Insulator:	Adapter ASTM D 1710 UNFILLED ULTEM 1000/PEI
RoHS:	Compliant

Mount Hole Distance	Code
6.35mm	A
7.16mm	B
8.60mm	C
8.65mm	D
8.90mm	E
10.20mm	F
12.20mm	G
12.70mm	H
18.30mm	I

Socket Diameter	Code
0.23mm	A
0.30mm	B
0.38mm	C
0.46mm	D
0.51mm	E
0.91mm	F

Flange Mount Length	Code
9.50mm	A
10.16mm	B
12.70mm	C
14.00mm	D
15.80mm	E
17.50mm	F
25.40mm	G

Function	Code
Straight	A
Right Angle	B
Edge Launch	C
CMC	D
End Launch	E

PCB Thickness	Code
0.61mm	A
0.87mm	B
1.78mm	C
1.88mm	D

Function CMC	Code
Microstrip Line	A
Stripline	B

Seal Position	Code
SMA Side	A
N Side	B

Pin Diameter	Code
0.30mm	A
0.38mm	B
0.60mm	C
0.64mm	D
0.75mm	E
0.80mm	F
0.86mm	G
0.87mm	H
1.00mm	I
1.04mm	J
1.20mm	K
1.27mm	L
1.50mm	M
2.70mm	N

Cable Spec	Code
STA 142	G
UFB142A	G
-GORE 3507	G
1401 Cable	G