



NEW PRODUCT HIGHLIGHT

| PTE7300 SERIES HERMETIC DIGITAL PRESSURE SENSORS

The PTE7300 pressure sensor is the sensing platform from Sensata Technologies offering best-in-class accuracy with excellent mechanical shock resistance and EMC protection to meet the most demanding applications in mid to high pressure ranges. Available with a wide range of ports, low power consumption, fast response time, and increased sensor diagnostics capabilities, enable customers to standardize and simplify designs

FEATURES

- Cyclical Redundancy Check (CRC) assures you that communications and data are reliable.
- Pressure ranges from 0-16 bar to 0-600 bar (0-230 to 0-8700 psi)
- Best in class accuracy and fast response time to meet the highest performance applications
- Digital pressure output and I²C bus for connecting multiple devices
- Low power consumption to optimize energy efficiency
- High Resistance to Electromagnetic Noise (EMC)
- Stainless steel, fully hermetic, IP69K sensor package and hermetic port modules available to meet the harshest environments
- Snubber option for dampening of pressure spikes due to hammer and cavitation
- REACH/RoHS/CE compliant
- NSF61(6) (drinking water certifications)

RUGGED DESIGN

Built to meet demanding applications with high vibration and requirements

CONFIGURABLE PORT DESIGN

Allows for many different port configurations

ENHANCED DATA INTEGRITY

Cyclical Redundancy Check (CRC) assures you that communications and data are reliable

MID TO HIGH PRESSURE RANGE

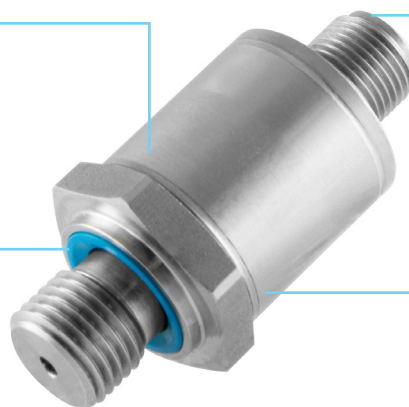
Pressure ranges from 16-600 bar (230-8700 psi) with high proof and burst pressures

IP69K DESIGN

Hermetic M12 Connector option

EASY INTEGRATION

Small form factor option for easy integration



APPLICATIONS

- Smart Water Networks and Smart Fire Hydrants
- Medical and Industrial Gas Monitoring
- OEM Hydraulic and Process Control
- Hydraulics and Pneumatics
- Mobile Hydraulics and Off-Highway Vehicles
- Pumps and Compressors
- Air Conditioning and Refrigeration Systems
- Plant Engineering and Automation

ORDERING OPTIONS

	PTE7300	-	XX*	A	M	-	1	B	016	S	N
Series											
PTE7300											
Pressure Port											
A: G1/4A DIN 3852-E											
B: 1/4-19PT (R1/4)											
C: 7/16-20 UNF-2A (MALE)											
D: 1/4-18NPT											
Electrical Connector											
M: M12 5-pin glass-to-metal-seal (sensor only)											
N: 5x1 2mm pitch pin to header (module only)											
External Sealing											
0: No sealing ring											
1: FKM (Viton) sealing ring (only for G1/4A pressure port)											
2: HNBR sealing ring (only for 7/16-20 UNF-2A MALE pressure port)											
Output Type											
B: I ² C (13 ENOB + CRC)											
Pressure Range											
016: 0-16bar											
050: 0-50bar											
100: 0-100bar											
200: 0-200bar											
250: 0-250bar											
350: 0-350bar											
400: 0-400bar											
500: 0-500bar (sensor only)											
600: 0-600bar (sensor only)											
Pressure Reference											
S: Sealed gauge (M12 5-pin only)											
B: Gauge (module only)											
Snubber											
N: No snubber											
S: Snubber with 0.5 damping hole											

CONTACT US

Americas

+1 (800) 350 2727
sensors@sensata.com
switches@sensata.com

Europe, Middle East & Africa

+359 (2) 809 1826
pressure-info.eu@sensata.com

Asia Pacific

sales.isasia@list.sensata.com
China +86 (21) 2306 1500
Japan +81 (45) 277 7117
Korea +82 (31) 601 2004
India +91 (80) 67920890
Rest of Asia +886 (2) 27602006
ext 2808