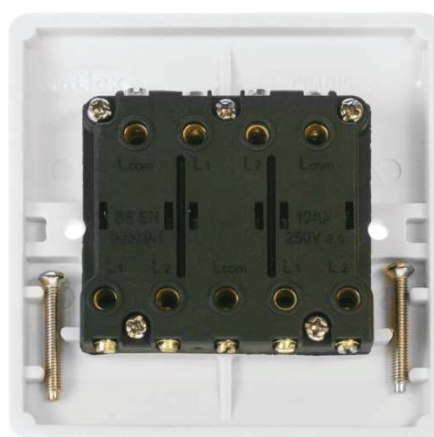


## SPECIFICATION SHEET

Product Code CCA013

Description 10AX 3 Gang 2 Way Plate Switch



General Information	
Dimensions	86mm x 86mm x 9.5mm
Material composition	Front Plate: Urea Terminals: Brass Terminal Screws: Steel and Yellow Passivated Internal Busbars: Formed Press Brass Silver "On-lay" Copper/Brass Contacts
Back Box Depth	16mm – 47mm
Cable Size	4 x 1.5mm <sup>2</sup>
Load Rating	10AX (Suitable for Inductive loads)
Modular	No
Gang	3
2 Way	Yes
Intermediate	No
Warranty	10 Years Domestic

Standards	The Low Voltage Directive 2006/95/EC BS EN 60669– 1:1999 + A1:2002 + A2:2008
-----------	---

Additional Information	<p>Ensure that the mains supply is isolated before commencing installation. Bare earth cables must always be covered with appropriate sleeving and wired to the earth terminal.</p> <p>All white moulded accessories are manufactured using Urea Formaldehyde, which has similar inherent properties to antimicrobial additives that inhibit the growth of infectious diseases. All products independently tested achieved a 99.9% kill rate across all four types of the strains of bacteria – MRSA, E-Coli, Salmonella, and Klebsiella Pneumoniae.</p>
------------------------	--