

## Quick Install Guide for Windows

**Hauppauge Inc.**  
909 Motor Parkway  
Hauppauge, NY 11788,  
USA  
Phone: (+1) 631-434-1600  
Tech Support: (+1) 631-434-3197  
Email: support@hauppauge.com  
www.hauppauge.com

**Hauppauge Digital Europe Sarl**  
Phone: (+44) 203 405 1717  
Email: support@hauppauge.co.uk  
www.hauppauge.co.uk

**Hauppauge Digital Asia Pte Ltd**  
1093 Lower Delta Road #04-05  
Tiong Bahru Industrial Estate  
Singapore 169204  
Phone: (+65) 62769163  
Email: HDA\_sales@hauppauge.com.sg  
support@hauppauge.com.sg  
www.hauppauge.com.sg

## Contents of the Package

**A** WinTV-NOVA-S2 Stick**B** USB Extension Cable**C** Power Supply 12 V DC / 1.5 A  
(inside +, outside -)

The plug may vary depending on the country.

**D** Infrared Remote Control with Battery  
(some models only)

Subject to change

**E** WinTV v8.5 Download Document with Activation Code \*

For the exact contents please refer to the packaging description on the box.

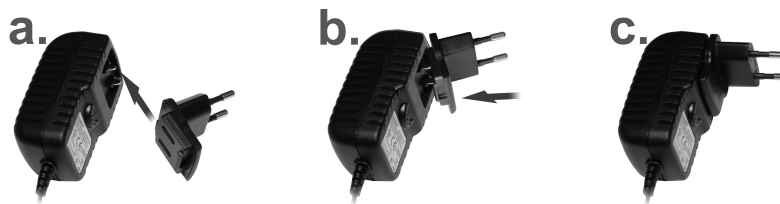
\* Please keep the Activation Code in a safe place. It is required for future installations.

1

## Step 1: Install the Hardware

The WinTV-NOVA-S2 allows you to receive satellite TV / radio on your PC, and requires a connection to a satellite dish with Universal LNB.

1. Insert the power plug into the power supply unit body. To do this, slide the top of the plug into the designated slot on the power supply unit body as shown in figure a below. Now push the plug (figure b) until it clicks into place (figure c).



2. Connect the satellite antenna to the antenna input of the WinTV-NOVA-S2 stick.
3. Connect the small plug at the end of the cable on the power supply to the '12V, 1.5A' connector on the side of the WinTV-NOVA-S2 stick. Plug the power supply unit into a wall socket.



4. Remove the cap from the WinTV-NOVA-S2 stick, that covers the USB connector.
5. Use the supplied USB Extension Cable to connect the WinTV-NOVA-S2 stick to a free USB 2.0 or USB 3.0 port on your computer.

**Indicator LED**

The LED at the top of the WinTV-NOVA-S2 stick, close to the power connector, has the following meaning:

- LED off: The WinTV-NOVA-S2 tuner is not in use.
- LED green: The WinTV-NOVA-S2 tuner is used to watch TV or for recording.
- LED red: A current overload is detected on the antenna input.
- LED flashing red: Short circuit detected in the antenna cable or satellite system.

2

## Step 2: Software Installation

**This step requires that the WinTV-NOVA-S2 stick is connected to the USB port. It is recommended to disable your antivirus software during installation. An Internet connection is required for software activation.**

Open your web browser and enter the download link from the WinTV v8.5 Download Document into the address bar. Or alternate, visit one of these sites:

[www.hauppauge.co.uk](http://www.hauppauge.co.uk)  
[www.hauppauge.com](http://www.hauppauge.com)  
[www.hauppauge.com.sg](http://www.hauppauge.com.sg)

Click on "SUPPORT", then "WinTV v8.5".

Download the WinTV v8.5 setup file to your computer. After the download, the file is usually located in your personal 'Downloads' folder.

Run the WinTV 8.5 Setup file, for example wintv85setup\_36080.exe (the version number may vary, but must be 36080 or later).

Select your language and click "Next". Follow the instructions on your screen.

First, the device driver for WinTV-NOVA-S2 will be installed.

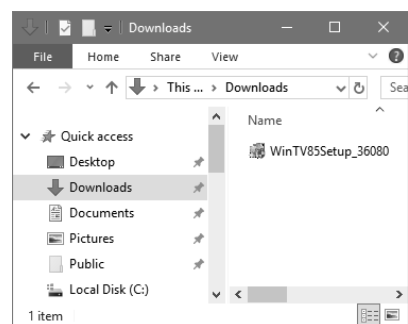
In the window "Activation required", click on the button "Enter Activation code" and enter the Activation Code from the WinTV v8.5 Download Document.

After successful activation, the WinTV application will be installed. It is recommended to use the default directories for the program and data files.

After the installation, you will find a 'WinTV 8.5' icon on your desktop and a "Hauppauge WinTV" folder in the Windows Start menu.

**Need Help?**

If you have questions or need help with software download or activation, please don't hesitate to contact our technical support staff, by phone or email, details can be found in the head of this Quick Install Guide.



3

## Step 3: Run WinTV 8.5 and Scan for Channels



To start the WinTV application, double-click on the 'WinTV 8.5' icon on your desktop.

On the first start of the application, the Device Setup Wizard will appear.

Set the checkmark on "Digital DVB-S/DVB-S2" and click **Next**.

You will need to specify which satellite your dish is aligned with. In European, English speaking countries this is typically '28.2E ASTRA 2'.

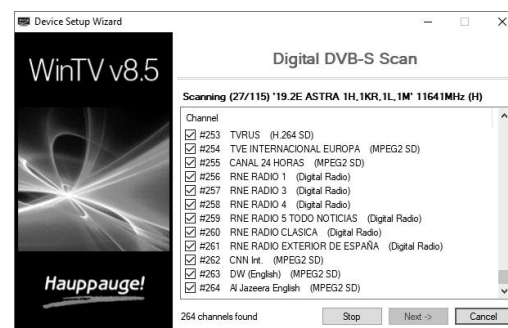
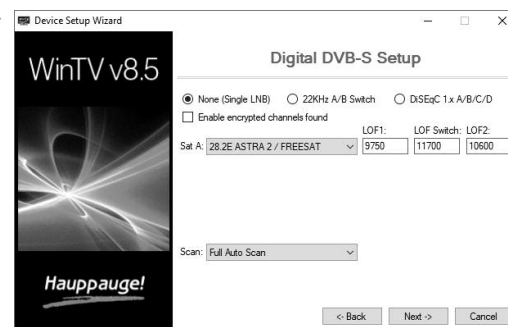
Click **Next** to start the scanning process.

Channels will be found and listed during the scan.

Once this is complete, click **Next** to save the channel list and finish.

**How to rerun the channel scan later**

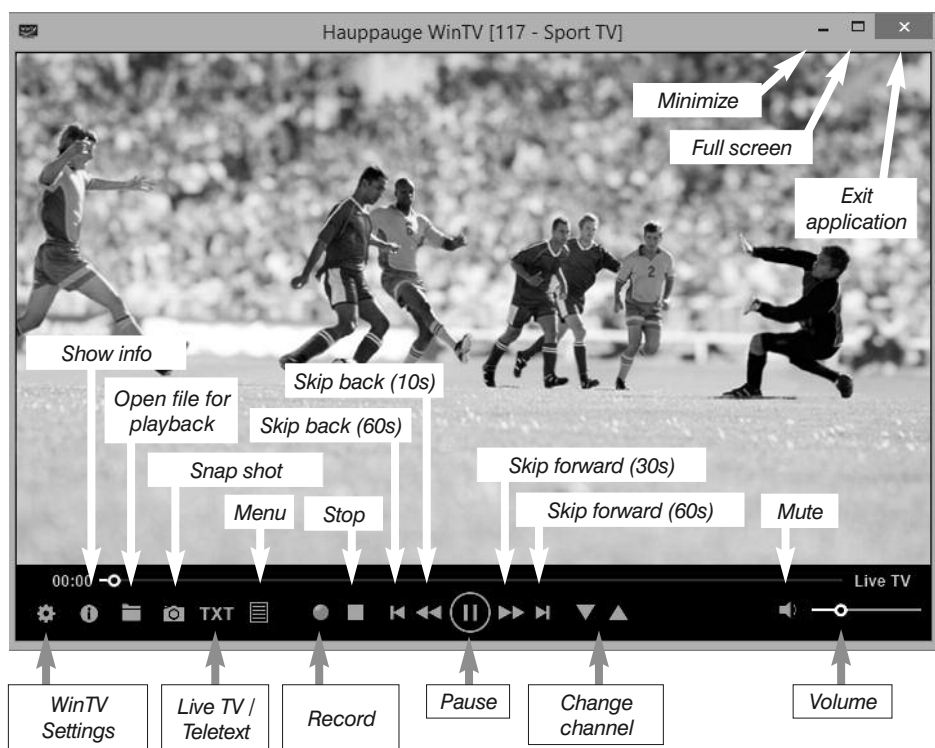
To scan for channels again later, in the main WinTV window click on the gear icon, then select the "Devices" tab, click on the WinTV device list and click on "Tuner Setup".



4

## Step 4: Using WinTV v8.5

WinTV v8.5 features include live TV, recording and pausing live TV, a scheduler for recording and a video player to play back recordings in a window or full screen.

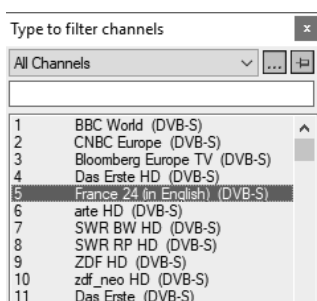


### Start Live TV

To start Live TV, click on the TV icon:

### Ways to Change Channels

- Click on the arrow buttons and .
- Enter a preset number using keyboard or remote control.
- Using the keyboard, enter the starting letter of a channel's name.
- Click on the Menu button and select "Find Channel" from the Context menu (pictured right).



### Record TV Manually

- To start recording, click on the **Record** button.
- To finish the recording, click on the Record button again.

### Recording Location

By default, recordings (and Snapshots) are placed into **C:\Users\Public\Videos**. You can change this folder in the WinTV settings (gear icon) on the 'Capture' tab.

5

### Playing Back Recordings

To watch a recording, click on the **Open File for Playback** button and select the recording, or click the **Menu** button and select "Recordings" from the menu.

### WinTV Keyboard Commands

Next Channel	= Plus (+)	Live (now)	= Ctrl + C
Previous Channel	= Minus (-)	Full Screen	= Ctrl + W
Increase Volume	= Page up	Subtitles on / off	= Ctrl + S
Decrease Volume	= Page down	WinTV Settings	= Ctrl + I
Show Channel List	= Ctrl + L	Start TV	= Alt + T
Mute	= Ctrl + M	Last Channel	= Alt + P
Display Info	= Ctrl + O	Start / Stop Recording	= Alt + R
Stream Details	= Ctrl + D	Stop Live TV or Playback	= Alt + S
Teletext	= Ctrl + T	Open File	= Alt + F
Pause Video	= Ctrl + Q	Make Snapshot	= Space Bar
Play	= Ctrl + P	Change Aspect Ratio	= Ctrl + A
Skip Ahead	= Ctrl + F	Exit Full Screen	= Esc
Skip Back	= Ctrl + R		

### Remote Control (On Some Models Only)

Insert the battery into the remote control, following the instructions on the back of the remote control (+ is on top / visible).

The IR software (ir.exe) is started automatically when Windows starts (you should see a small black remote control icon in the Windows taskbar).



### Notes on Using the Remote Control

- The IR sensor is built into the WinTV-NOVA-S2 stick. Therefore, when using the Remote Control, direct it towards the WinTV-NOVA-S2 stick.
- The WinTV application only responds to the remote control, when it is the active window.
- In case the WinTV-NOVA-S2 stick was not connected to the USB port during Windows start up, the IR software will not be loaded and the remote control will not function. To make it work, after connecting the WinTV-NOVA-S2 stick, run the "Restart IR" shortcut in the Start menu or in the "WinTV Advanced Options" folder on your Desktop.

### Important Remote Control Buttons

<b>Go</b> : Start WinTV	<b>Mute</b> : Turn sound on/off
<b>TV</b> : Start Live TV	<b>Text</b> : Display Teletext
<b>Power</b> : Exit WinTV	<b>CH</b> : Change channel
<b>OK</b> : Confirm selection	<b>VOL</b> : Change volume
<b>Prev</b> : Select last channel	

7

### TV Guide

Many digital TV channels transmit Electronic Program Guide information (EPG). This information is collected and displayed in the TV Guide window. Click a program title with your mouse to see more details about the entry.

To record a program, click on Record in the details view. The scheduled recording is added to the Scheduler window. To rescan all frequencies for TV Guide information, click on Update EPG.

### TV Scheduler

In the main window, click on the Menu button and select "Scheduler", or click on the grey "Scheduler" button in the "TV Guide & Scheduler" window.

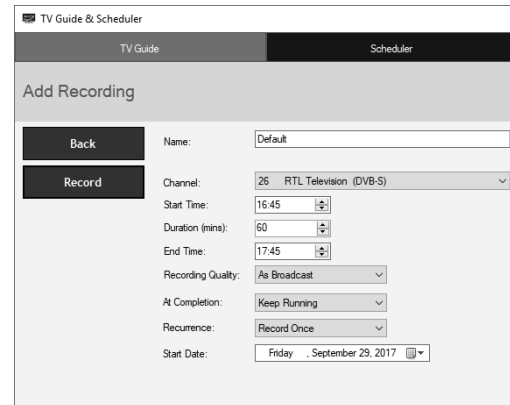
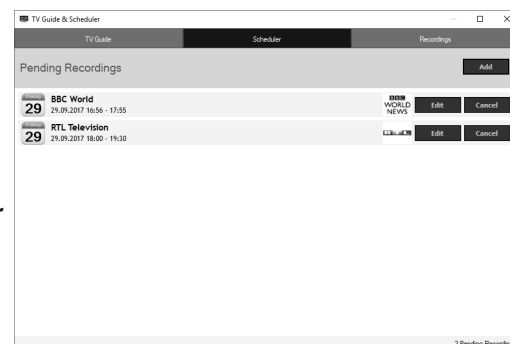
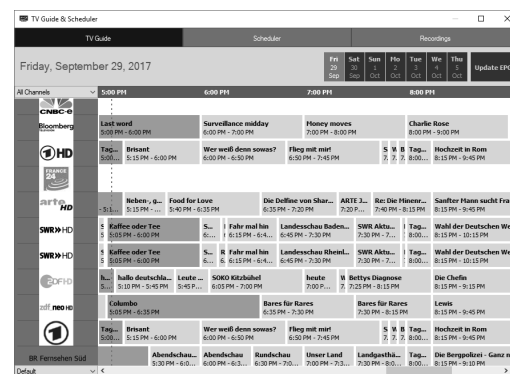
The Scheduler allows you to record a TV program at a certain date and time on a specified channel. It lists all scheduled recordings added by the TV Guide as well as any manual recordings that have been set.

From here you can Edit or Cancel (delete) existing schedule entries.

To manually schedule a new recording, click on the **Add** button. You will need to select the channel, set the start time, duration etc. and confirm with a click on the **Record** button.

**Note: The WinTV application does not have to be running for a scheduled recording to work, but your PC will need to be either turned on or in Standby mode. If the PC is in Standby mode, it will be woken up automatically at the given time.**

All scheduled recordings are performed in the background by the task "WinTVRec.exe". If a recording is started while you are watching live TV, WinTV will display the TV program being recorded.



6

## Further Information

### Checking the Device Driver Installation

Open the **Control Panel**, click **System** and select **Device Manager**. In Windows 10, right-click on the Start icon and select "Device Manager" from the menu.

In the device manager, in the category "Sound, video and game controllers" you should see the entry "WinTV-NOVA-S2/PCTV 461e" without exclamation mark.

### Software Updates and FAQ

In the Support section on the Hauppauge website you can find the latest software updates for your product, answers to frequently asked questions and other up to date information.

United Kingdom: [www.hauppauge.co.uk](http://www.hauppauge.co.uk)

Singapore: [www.hauppauge.com.sg](http://www.hauppauge.com.sg)

### United Kingdom: Detailed TV-Guide not available

Please note that in the United Kingdom detailed TV Guide information is not available via satellite (ASTRA 28.2E), only "Now and Next" information.

### How Can I Rerun the Channel Scan?

To scan for channels again, in the main WinTV window click on the gear icon, then select the "Devices" tab, click on the TV tuner device and click on "Tuner Setup".

### Display Problems

If there are problems with the TV display, they can possibly be rectified by changing the video renderer options. Click on the Settings button in WinTV, on the "General" tab select a different Video Renderer (for example VMR9). Restart the WinTV application.

**Waste Electrical and Electronic Equipment (WEEE):** The device may not be disposed of with household rubbish. This appliance is labeled in accordance with European Directive 2002/96/EG concerning used electrical and electronic appliances (Waste Electrical and Electronic Equipment - WEEE). The guideline determines the framework for the return and recycling of used appliances as applicable throughout the EU. To return your used device, please use the return and collection systems available to you.

**CE Statement:** This equipment has been tested and complies with EN 55013, EN 55020 and IEC 801-3 part 3 standards. The complete conformity declaration can be viewed here: [www.hauppauge.de/compliance](http://www.hauppauge.de/compliance)

**Nordic note:** Ma kun tilkoples kabel-TV nett via galvanisk isolator.

**FCC Statement FCC ID:** H90WINTV

**CAUTION:** Changes or modifications not expressly approved by the party responsible for compliance to the FCC Rules could void the user's authority to operate the equipment.

**Canada:** Supplementary Television Broadcasting Receiving Apparatus - Appareils supplémentaires de réception de télévision.

8