

Title of Change:	packing quantity increase from 450ea to 1350ea for TO247&TT3PN and tube pin dimension and color change
Effective date:	15 Feb 2022
Contact information:	Contact your local onsemi Sales Office or Daisy.Zhi@onsemi.com
Type of notification:	This Product Bulletin is for notification purposes only. onsemi will proceed with implementation of this change upon publication of this Product Bulletin.
Change Category:	Test Change
Change Sub-Category(s):	Shipping/Packaging/Marking

Sites Affected:


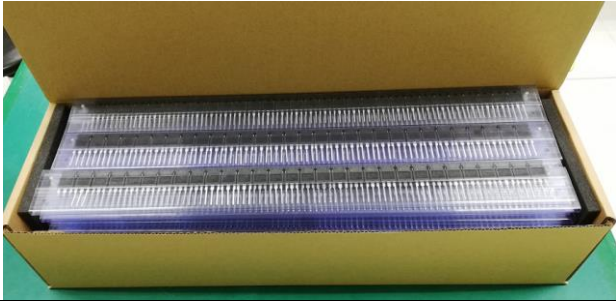
onsemi Sites	External Foundry/Subcon Sites
onsemi Suzhou, China	None

Description and Purpose:

Current: MPQ&FBQ is 450 EA;
 Proposed: Changing MPQ&FBQ to 1350EA for uniformity.

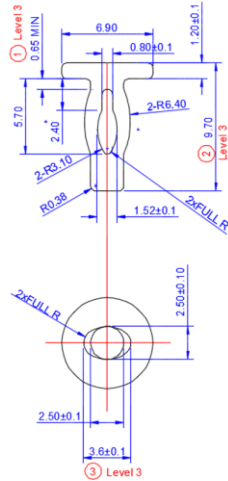
Change category	Before Change Description	After Change Description
Packing quantity change	MPQ&FBQ:450EA	MPQ&FBQ:1350EA

Supplement:

TT3P/ TO247	Quantity per box	
	Current	Proposed
MPQ	450 units	1350 units(remove the bubble bag fill)
Entity Photos		
Stack Floors	5	15

Tube Pin Dimension & Color Change

Currently:

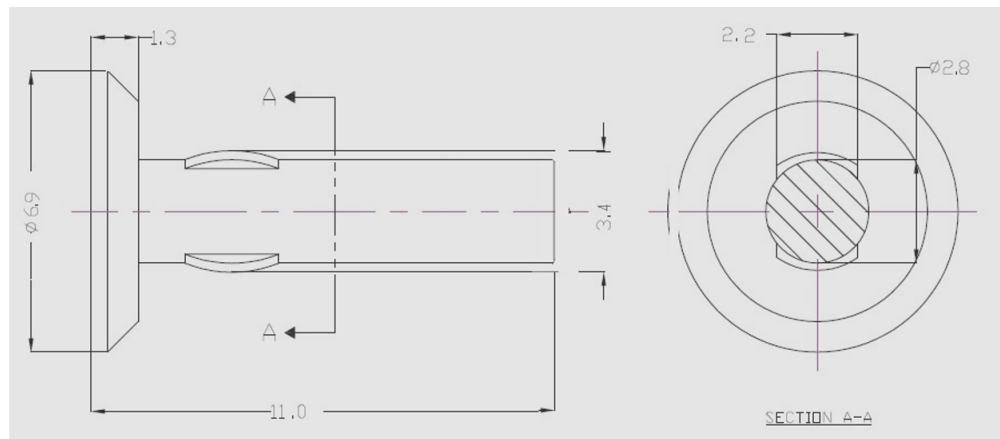


Note:
 1. MATERIAL: NYLON
 2. COLOR: GREEN/RED
 3. STANDARD TOLERANCE = +/-0.20

Proposed:



N57454G001
 Remark: tolerance: +/-0.15mm, color: white.



List of Affected Standard Parts:

Note: Only the standard (off the shelf) part numbers are listed in the parts list. Any custom parts affected by this PCN are shown in the customer specific PCN addendum in the PCN email notification, or on the [PCN Customized Portal](#).

FFSH10120A-F155	FFSH20120A-F155	FFSH30120A-F155
FGA3060ADF-01	FGA40T65SHD-01	FGA40T65SHDF-01
FGH40T65SHD-F155-01	FGH40T65SHDF-F155-01	FGH4L40T120LQD
FGH4L50T65SQD	FGH60T65SHD-F155-01	FGH75T65SHD-F155-01
FGH75T65SHDT-F155-01	FGH75T65SHDTL4-01	FGHL40T65LQDT
FGHL40T65MQDT	FGHL50T65LQDT	FGHL50T65LQDTL4

FGHL50T65MQDT	FGHL50T65MQDTL4	FGHL75T65LQDT
FGHL75T65LQDTL4	FGHL75T65MQDT	FGHL75T65MQDTL4
NDSH10170A	NDSH20120C	NDSH50120C
NTH4L014N120M3P	NTH4L015N065SC1	NTH4L020N090SC1
NTH4L022N120M3S	NTH4L025N065SC1	SHGTG40N60A4
SHGTG30N60A4D	SFGH50N3	SFGH40T120SMD
SFGH30N60LSDTU	SFGH15T120SMD-F155	SFFSH40120ADN-F155
SFFH60UP40S	NTHL185N60S5H	NTHL125N65S3H
NTHL120N60S5Z	NTHL099N60S5	NTHL095N65S3H
NTHL075N065SC1	NTHL067N65S3H	NTHL060N065SC1
NTHL045N065SC1	NTHL041N60S5H	NTHL025N065SC1
NTHL019N60S5F	NTHL015N065SC1	NTH4LN095N65S3H
NTH4LN067N65S3H	NTH4LN040N65S3H	NTH4LN019N65S3H
NTH4L075N065SC1	NTH4L067N65S3H	NTH4L060N090SC1
NTH4L060N065SC1	NTH4L045N065SC1	FFSH40120A-F155