

DATA SHEET

WMD12-2425-PQU, WMD19-2425-PQU, WMD26-2425-PQU

DOUBLE-HINGED CABINET, PLEXIGLASS WINDOW DOOR, M6 RAILS

24/7 TECHNICAL SUPPORT AT 1.877.877.2269 OR VISIT BLACKBOX.COM



BLACK BOX

OVERVIEW

DOUBLE-HINGED CABINET, PLEXIGLASS WINDOW DOOR, M6 RAILS

INTRODUCTION

Black Box Double-Hinged Wallmount Cabinet Enclosures are designed to provide access, security, and cooling for 19-inch rack equipment. They are ideal for use in network wiring closets, small offices, healthcare, retail stores, restaurants/bars, and other locations with floor space constraints.

Built to perform, these enclosures come with a robust design that can stand up to your environment while remaining easy to deploy. They feature a center section that separates from the rear of the unit, making installation a breeze. Once installed, the dual-hinged design allows for the rear section to swing away from the wall, providing the user with easy rear access to their equipment and cabling, and providing the ability to manage equipment from either side. Cable entry and management is also made easy with knockouts and entry grommets that are provided on the rear section of the unit.

FEATURES

- Wallmount cabinet secures 19" rack equipment while minimizing system footprint
- Double-Hinged design swings away from wall for easy rear equipment access
- Front panel can be installed to open from right or left
- Center section easily removed from rear, making installation a breeze
- Rear wall section provides knockouts for cable entry and management
- Vented sides allow for cross-flow air circulation to help keep equipment cool, while also providing tie-down points for cable management

The front panel is lockable and features a plexiglass window that provides superior scratch resistance and which can be mounted to open from either the right or the left. The rack angles within the cabinet feature M6 square holes and are adjustable to allow for mounting at various equipment depths. Separate rack angles can also be purchased with either 10-32 tapped or M6 square holes to provide additional mounting options. The side panels are vented, providing tie-down points for cable management while also allowing for cross-flow air circulation that helps keep your equipment cool. If additional cooling is required, an optional 4" 100 CFM fan can be mounted on the side panels to help reduce heat.

- Adjustable rack angles allow for various equipment mounting depths
- Rounded corners result in no sharp edges
- Lockable front panel features a plexiglass window that provides superior scratch resistance
- Center section is self-locking with latches in multiple locations
- Easy front access to all latches with no exposed side latches allows for cabinet to be mounted in corners or other tight spaces
- Constructed of pre-treated steel and coated with light-textured, low-gloss polyester powder paint
- TAA Compliant for GSA Schedule Purchases

SPECIFICATIONS

DOUBLE-HINGED CABINET, PLEXIGLASS WINDOW DOOR, M6 RAILS

DOUBLE-HINGED CABINET, PLEXIGLASS DOOR, M6 RAILS COMPARISON CHART			
FEATURE	WMD12-2425-PQU	WMD19-2425-PQU	WMD26-2425-PQU
COLOR	Black		
UNIT DIMENSIONS (HXWXD)	23.6" x 23.6" x 25.1" (600 x 600 x 637 mm)	36" x 23.6" x 25.1" (915 x 600 x 637 mm)	48" x 23.6" x 25.1" (1220 x 600 x 637 mm)
UNIT WEIGHT	90 lb. (40.8 kg.)	125 lbs (56.7 kg.)	156 lbs. (70.8 kg)
USEABLE DEPTH	Up to 22.5" (572.3 mm)		
MAXIMUM LOAD CAPACITY	250 lb. (113.4 kg)	300 lb. (136.1 kg)	350 lb. (158.8 kg.)
CONSTRUCTION	Front Door Section: Composite Frame with Plexiglass Window Center Section: Welded 14-gauge Steel Rack Angles: M6 Square Holes, 12-gauge Steel Rear Section: Welded 14-gauge Steel		
STANDARDS	UL 2416, File No. E301145, cUL Listed per CSA C22.2 No. 182.4, NEMA Type 1, IP20, RoHS 2 (2015/863/EU), REACH, WEEE		
WARRANTY	5-Year Limited		



SPECIFICATIONS

DOUBLE-HINGED CABINET, PLEXIGLASS WINDOW DOOR, M6 RAILS



NOTE:

Front view, back view, and side view of WMD12-2425-PQU shown. Other models are available for purchase.

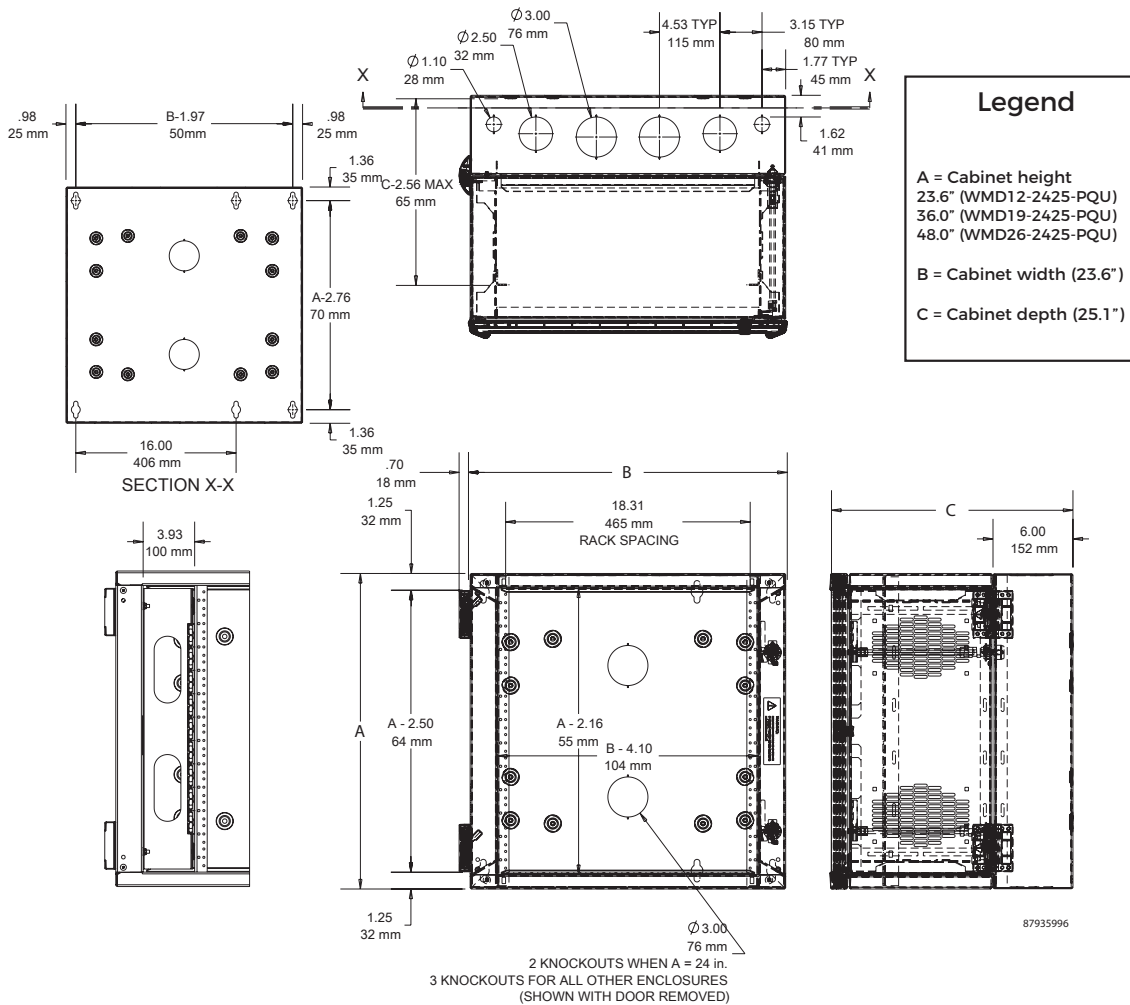
WHAT'S INCLUDED

DOUBLE-HINGED CABINET, PLEXIGLASS WINDOW DOOR, M6 RAILS

- (1) Wall mount cabinet
- (1) Pair of keys
- (1) Bag of mounting hardware
- (3) Grommet plugs

DETAILED PRODUCT DIMENSIONS

DOUBLE-HINGED CABINET, PLEXIGLASS WINDOW DOOR, M6 RAILS



ORDERING INFORMATION

DOUBLE-HINGED CABINET, PLEXIGLASS WINDOW DOOR, M6 RAILS

ITEM	CODE
12U Double-hinged 24x24x25 Cabinet, Plexi Door, M6 Rails	WMD12-2425-PQU
19U Double-hinged 36x24x25 Cabinet, Plexi Door, M6 Rails	WMD19-2425-PQU
26U Double-hinged 48x24x25 Cabinet, Plexi Door, M6 Rails	WMD26-2425-PQU
12U Rack Angles, M6	WMD12-RAQ
12U Rack Angles, 10-32	WMD12-RAT
19U Rack Angles, M6	WMD19-RAQ
19U Rack Angles, 10-32	WMD19-RAT
26U Rack Angles, M6	WMD26-RAQ
26U Rack Angles, 10-32	WMD26-RAT
4IN Fan, 115V, 1-15P, 100 CFM	WMD-1075FAN-U
4IN Fan Filter Kit	WMD-4FANKIT-U
Pole Mount Kit for Wallmount Cabinets	WMD-24PMOUNT-U

NOTES _____

DISCLAIMERS

Black Box Corporation shall not be liable for damages of any kind, including, but not limited to, punitive, consequential or cost of cover damages, resulting from any errors in the product information or specifications set forth in this document and Black Box Corporation may revise this document at any time without notice.

ABOUT BLACK BOX

Black Box® is a trusted IT solutions provider delivering cutting-edge technology products and world-class consulting services to businesses across the globe in every industry. The breadth of our global reach and depth of our expertise accelerate customer success by bringing people, ideas, and technology together to solve real-world business problems.

FILENAME:
WMD12-2425-PQU_WMD19-2425-PQU_WMD26-2425-PQU_ds_rev1.PDF
© COPYRIGHT 2022. BLACK BOX CORPORATION. ALL RIGHTS RESERVED.

TRADEMARKS

Black Box and the Black Box logo type and mark are registered trademarks of Black Box Corporation.

Any other trademarks mentioned in this document are acknowledged to be the property of the trademark owners.

