

Han 1A-DIN rail adapter w. strain relief

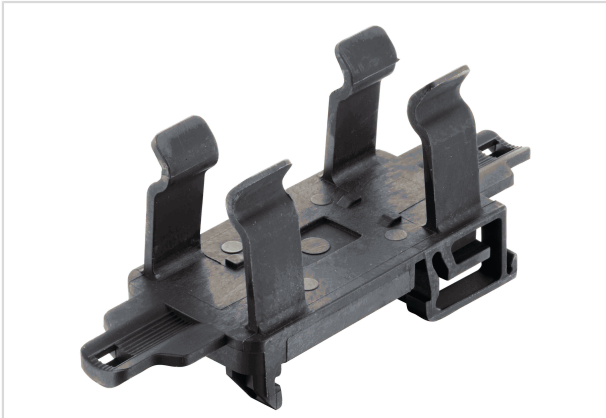


Image is for illustration purposes only. Please refer to product description.

Part number	09 10 000 9911
Specification	Han 1A-DIN rail adapter w. strain relief
HARTING eCatalogue	https://b2b.harting.com/09100009911

Identification

Category	Accessories
Series	Han® 1A
Type of accessory	Adapter
Description of the accessory	for mounting on top hat rails With strain relief

Version

Details	A Han® 1A configuration that only consists of inserts (with or without adapter 09 10 000 9911 / 09 10 000 9912) is an unenclosed connector according to IEC 61984. In this case protection against electric shock must be provided by the installation methods of the user.
---------	---

Material properties

Material (accessories)	Polyamide (PA)
Colour (accessories)	Black
Material flammability class acc. to UL 94	V-0
RoHS	compliant
ELV status	compliant
China RoHS	e
REACH Annex XVII substances	Not contained
REACH ANNEX XIV substances	Not contained
REACH SVHC substances	Not contained
California Proposition 65 substances	Not contained



Pushing Performance

Commercial data

Packaging size	10
Country of origin	Romania
European customs tariff number	85366990
eCl@ss	27440210 Fixing element for industrial connectors