

Masterseal Plus™

mkelectric.co.uk



Euro Data Modules

DATA



K5844WHI



K5887WHI K5887BLK

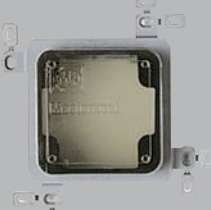
Junction Boxes

30 AMP
IP66

K56506GRY

K56506WHI
(COVER ON)K56506WHI
(COVER OFF)

Flush Mounting Frames



K56500GRY



56500WHI



K56501GRY

Flush Mounting Bezels



K56502GRY



56502WHI



K56503GRY

Conduit Entries



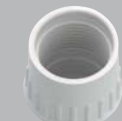
56460WHI



56461WHI



56462WHI



56463WHI



56464WHI

Accessories



MK9933



56890GRN

K5844WHI 5
RJ45 CAT 5e
ANGLED UNSCREENED
ONE MODULE

K5887WHI 5
K5887BLK 5
RJ11/12
ONE MODULE

K5844
Enhanced Cat 5e performance.
Suitable for both 568A and
568B wiring schemes.

ISO/IEC 11801
EN 50173
TIA 568
EN 41003

K5887
Suitable for both RJ11 and
RJ12 jacks
RJ11 4 wire
RJ12 6 wire

FCC68
EN 41003

DIMENSIONS
25 x 50mm

See Logic Plus
page 46-48 for a
full range of
Euro modules

K56506GRY 1
K56506WHI 1
K56506BLK 1
JUNCTION BOX
WITH FOUR
4-WAY TERMINALS

Fixing holes are for No. 8
woodscrews (not supplied).
The enclosure has 4 entries, 1
on top, bottom and both sides.

TERMINAL CAPACITY
Each terminal block accepts
four 2.5mm² cables.

DIMENSIONS
95 x 95 x 65mm
BS 6220:1983
IP66 to BS EN 60529

K56500GRY 1
K56500WHI 1
1 GANG
PLASTER/TILE FLUSH
MOUNTING FRAME WITH
PROTECTIVE COVER
FOR USE WITH
160 X 117MM PRODUCTS

56500GRY 1
56500WHI 1

1 GANG
PLASTER/TILE FLUSH
MOUNTING FRAME WITH
PROTECTIVE COVER
FOR USE WITH
95 X 95MM SWITCHES

K56501GRY 1
K56501WHI 1

2 GANG
PLASTER/TILE FLUSH
MOUNTING FRAME WITH
PROTECTIVE COVER

The Flush adaptors for plaster
and tile can be used with finish
depths up to 20mm, by using
the spacers provided. Allows
flush mounted Masterseal
Plus™ products to maintain
their IP rating.
Can be used with side entry or
back entry enclosures.

DIMENSIONS
56500 115 x 115 x 34mm
K56500 135 x 135 x 34mm
K56501 135 x 195 x 34mm

K56502GRY 1
K56502WHI 1
1 GANG
FLUSH MOUNTING
BEZEL FOR USE WITH
160 X 117MM PRODUCTS

56502GRY 1
56502WHI 1

1 GANG
FLUSH MOUNTING
BEZEL FOR USE WITH
95 X 95MM SWITCHES

K56503GRY 1
K56503WHI 1

2 GANG
FLUSH MOUNTING BEZEL

The Flush adaptors for brick
and cavity walls should be
used on vertical surfaces
where no additional finishing,
such as plastering is required.
Allows flush mounted
Masterseal Plus™ products to
maintain their IP rating.

Can only be used with back
entry enclosures.
Supplied with 4 self tapping
screws to fix enclosure to
mounting bezel.

Clip-on surround hides
mounting screws.

DIMENSIONS
56502 145 x 145 x 41mm
K56502 165 x 165 x 41mm
K56503 165 x 245 x 41mm

56460GRY 5
56460WHI 5
ENTRY BLANK

56461BLK 5
56461WHI 5
PVC CABLE ENTRY
TO PROVIDE DIRECT
ENTRY OF POWER CABLE
TO THE UNIT VIA THE
BOTTOM BOX ENTRY

56462WHI 5

56462BLK 5
56462WHI 5

20MM PLAIN CONDUIT
ENTRY PUSH FIT
ADAPTOR BETWEEN
BACK BOX AND 20MM
PLAIN CONDUIT

56463BLK 5
56463WHI 5

20MM THREADED
CONDUIT ENTRY PUSH
FIT ADAPTOR BETWEEN
BACK BOX AND 20MM
THREADED CONDUIT

56464BLK 5
56464WHI 5

BOX COUPLER
FOR GANGING ONE
MASTERSEAL PLUS™
BOX NEXT TO ANOTHER

MK9933 1
M20 EARTH LEAD
ADAPTOR FOR EARTHING
METAL CONDUIT

56890GRN 5
REPLACEMENT
NEON LOCATOR