

DURATOOL



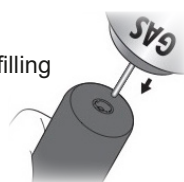
Butane Gas Soldering Iron Model: D03358

IMPORTANT SAFETY INFORMATION

- Never point the tool towards yourself or towards others when lighting or during use.
- Do not touch the tip, nozzle or the main tube when hot.
- Contains flammable gas contents under pressure.
- Do not expose to sparks or naked flame.
- Do not puncture or incinerate the unit.
- Store at temperatures below 40°C (104°F)
- Use only in a well ventilated area.
- This appliance is not intended for use by persons (including children) who are not mentally able, physically capable, experienced or do not understand the product. They should be given supervision and instruction in the use of the appliance by a person responsible for their safety.
- Children should be supervised to ensure that they do not play with the appliance.
- There are no user serviceable parts inside, do not disassemble the unit.
- Ensure the flame is fully extinguished and the iron allowed to cool after use before putting into storage.

REFILLING

- Ensure the control switch is in the off '-' position before filling.
- Invert the iron then firmly insert the refill cannister nozzle into the filling valve on the end, keeping it perpendicular at all times and press.
- Only use Butane refill gas.
- The iron will only take a few seconds to fill, then allow a couple of minutes for the gas to stabilise before use.

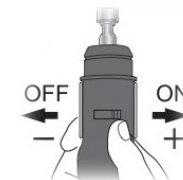


OPERATION

- Turn the control switch to the right '+' position.

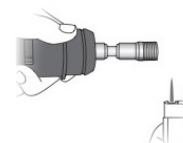
Using a lighter and direct the flame to the slots in the flame chamber.

- After a few seconds you will see the flame burning orange inside the chamber and can stop using the lighter.
- To adjust the tip temperature use the gas adjustment control switch. The control is marked '+' to increase and '-' to lower the heat.
- To switch the iron off, turn the gas switch all the way to the left '-' position.



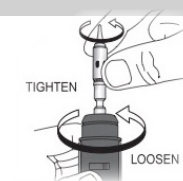
- To use the tool as a heat blower, when the iron is cool, unscrew the soldering iron tip, and it will become a heat blower.
- Turn the gas control to the '+' position.
- Ignite using the previous method as using soldering iron.
- To use the tool as a torch, when the iron is cool, unscrew the tip and the flame chamber, it will become a torch.
- Turn the gas control to the '+' position.

- Using a lighter, direct the flame onto the end of the main tube.
- To adjust the flame size use the gas adjustment control switch. The control is marked '+' to increase and '-' to lower the heat.
- To switch the iron off, turn the gas switch all the way to the left '-' position.



CHANGING THE TIP

- When the iron has cooled fully, simply unscrew the tip and replace with another.



WARNING: always allow the tool to fully cool before changing the tip or putting into storage.

SPECIFICATION

Weight	55g
Fuel	Butane (7.5ml)
Operating time	Approx 30 minutes
Dimensions (Length x Diameter)	172 x 25mm
Flame temperature	Up to 1300°C (blue flame)
Tip temperature	200-400°C
Heat blower temperature	Up to 450°C