

Ega Mini®

Manufactured in accordance with BS EN 50085 Part 1.

Standard Length: 3 metres

Available in 2 metre lengths for Non UK Markets.

Material: PVCu

Mini Trunking

3 METRE LENGTHS



2 METRE LENGTHS
(FOR NON UK MARKETS)



Coupling

MOULDED



16 x 16mm	YT1WHI	90m		YT1D1WHI	60m	YC1WHI	20	
25 x 16mm	YT2WHI	90m	YT2CHA	30m	YT2D1WHI	60m	YC2WHI OR CHA	20
32 x 12.5mm	YT200WHI	30m		YT200D1WHI	32m	YC200WHI	20	
40 x 16mm	YT3WHI	45m		YT3D1WHI	32m	YC3WHI	10	
40 x 25mm	YT4WHI	45m	YT4CHA	30m	YT4D1WHI	32m	YC4WHI	10
40 x 40mm	YT5WHI	45m		YT5D1WHI	32m	YC5WHI	10	
50 x 25mm	YT6WHI	30m		YT6D1WHI	32m			
50 x 32mm	YT7WHI	30m		YT7D1WHI	32m			
50 x 50mm	YT8WHI	12m				YC8WHI	10	

Manufactured in accordance with BS EN 50085 Part 1.

Standard Length: 3 metres

Available in 2 metre lengths for Non UK Markets.

Material: PVCu

Self Adhesive Tape should not be relied upon for permanent fixing of the Speedfix range. A permanent means (such as screws) should also be used.

Speedfix Mini Trunking

3 METRE LENGTHS

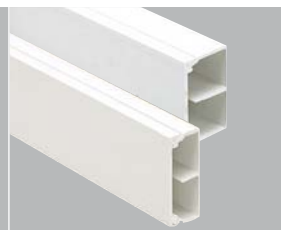


2 METRE LENGTHS

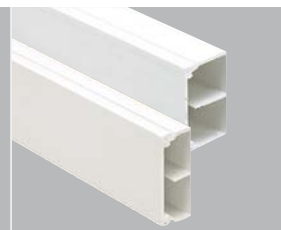


Twin Compartment Trunking

3 METRE LENGTHS



2 METRE LENGTHS



16 x 16mm	SPF1WHI	60m	SPF1D1WHI	60m		
25 x 16mm	SPF2WHI	30m	SPF2D1WHI	60m		
32 x 12.5mm						
40 x 16mm	SPF3WHI	30m	SPF3D1WHI	32m	ZT3WHI	30m
40 x 25mm	SPF4WHI	30m			ZT4WHI	30m
40 x 40mm					ZT4D1WHI	32m
50 x 25mm						
50 x 32mm						
50 x 50mm						