



# Product Change Notification

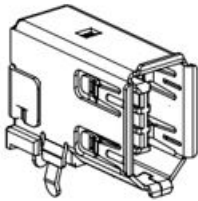
<b>Date Issued :</b>	April 15, 2022	<b>PCN Number :</b>	511562
<b>Reason for Change :</b>	Change Supplier		
<b>Description of Change :</b>	This notification is to inform you about addition of new Supplier Wote.That impacting the parts as per attached list. For product no impact to fit, form or function.		
<b>Reason for Short Notice :</b>	Special Request		
<b>Assessment of Change :</b>	Supplier Qualification Test Report/s		
<b>Planned Implementation Date :</b>	May 15, 2022		
<b>Sample Availability Date:</b>	April 20, 2022		
<b>Internal Molex Qualification Date :</b>	April 25, 2022		
<b>Last date to request Samples by Customer :</b>	April 30, 2022		
<b>Traceability Code Markings / Date :</b>	Date code		

Before Picture

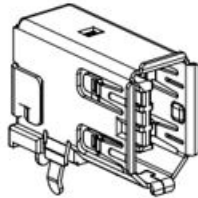
## Product Picture

Make no difference

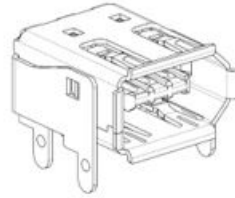
534600639



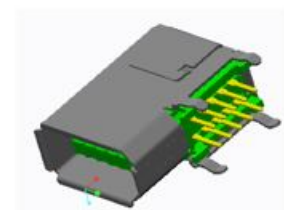
534600669



539840681



554451029



After Picture

**Overview**

- Add Alternative resin materials " WOTE LCP KD130i".

Change Reason :Due to existing resin supplier Polyplastics capacity constraint issue, we must qualify second resin source to meet ramp-up demand. Current supplier Polyplastics don't supply any volume due to their limited capacity. We must qualify local LCP supplier Wote to avoid production line-down. Wote is top one local LCP supplier in China.

- Product Impact:

No impact to fit, form or function;

- Part Number Impact:

see attached impacted part list

- We only change LCP resin supplier but the resin LCP 30% GF BLACK UL94V-0is not changed

✓ Before: Polylactics LCP E130i-BK205P

✓ After: Wote LCP KD130BI-FA

- Product will be fully qualified before it is shipped. Qualification reports will be available after below listed date.

# RELEASED

You may address inquiries regarding this PCN by clicking on the below link

[mailto:pcn\\_coordinator@molex.com?subject=PCN\\_Notification:511562](mailto:pcn_coordinator@molex.com?subject=PCN_Notification:511562)

or contact your Local Sales Engineer.

Note: While responding, please retain " PCN Notification : **PCN Notification: 511562** " in the e-mail Subject line for faster response.

**Molex, LLC**

2222 Wellington Court

Lisle, IL 60532

TEL (800) 786-6539

[www.molex.com](http://www.molex.com)