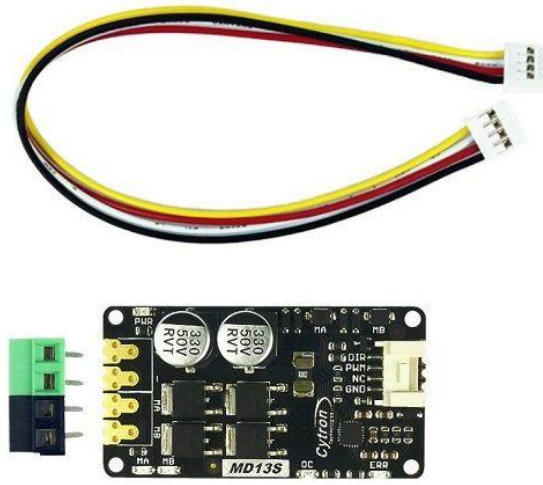


MD13S - Cytron 13Amp DC Motor Driver – 108070021



PRODUCT DETAILS

Brush motor is the most used motor worldwide because of the ease of operation. Just supply two terminals of brush motor with DC voltage, it will start rotating! Yet, you need a good motor driver to control the speed and direction from a microcontroller. MD10C is a great motor driver and now it is already in Revision 3. Anyway, we would like to introduce MD13S where the S stands for SMD (Surface Mount Device).

MD13S has great improvement in current protection which MD10C does not have. With new circuit and design, MD13S is able to output current to 30A max. And the continuous current is at 13A (at room temperature of 25 degrees C).

Not to forget it is [GROVE compatible](#), so get yourself a Grove shield. Oh, did I mention? MD13S is smaller than MD10C :)

Features:

- Bi-directional control for 1 brushed DC motor.
- Support motor voltage ranges from 6V to 30V
- Maximum current up to 13A continuous and 30A peak (10 seconds).
- [GROVE](#) compatible
- 3.3V and 5V logic level input.

- Solid state components provide faster response time and eliminate the wear and tear of mechanical relay.
- Fully NMOS H-Bridge for better efficiency and no heat sink is required.
- Speed control PWM frequency up to 20 KHz (Actual output frequency is same as input frequency).
- Support both locked-antiphase and sign-magnitude PWM operation, NOT RC (Radio Control) PWM.
- SMD compatible
- RoHS, FCC and CE compliance product.
- Dimension: 61mm x 33mm

Technical details

Dimensions	65mm x35mm x15mm
Weight	G.W 22.5g
Battery	Exclude
Compatible input	3.3 and 5V
Motor Channel	2
Operating Voltage (VDC)	6 to 30
Peak Current (A)	30 (10 seconds)
Continuous Current (A)	13
Arduino Shield	No- can be used with Wire connection
PWM (Lock-Antiphase and Sign-Magnitude)	YES
UART	No
Analog	No
RC Servo Signal	No

Polarity Protection	NO
LEDs Indicator	Yes
Test/Manual Button	Yes
Cooling Fan	No
Extra Socket	Grove Compatible
others	No heat sink is required

Part List

MD13S	1
Grove Cable	1
Black Screw	1
Green Screw	1