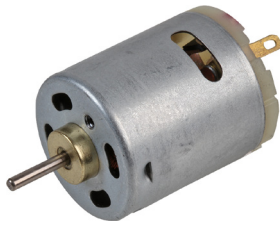


DC Brushed Motor

12V to 24V



Description

This product is a DC brushed motor. Its small sizes alongside with the high torque allows to use in small electronics applications, such as for example: robotics, portable devices, DIY electronics kits, pumps. The motor could be used as it is, or it could be mounted on the base (PCB, External Enclosure) by using two mounting holes.

Applications

Agriculture, Cooling, Consumer Electronics, Hobby & Education, Mechanical, Portable Devices

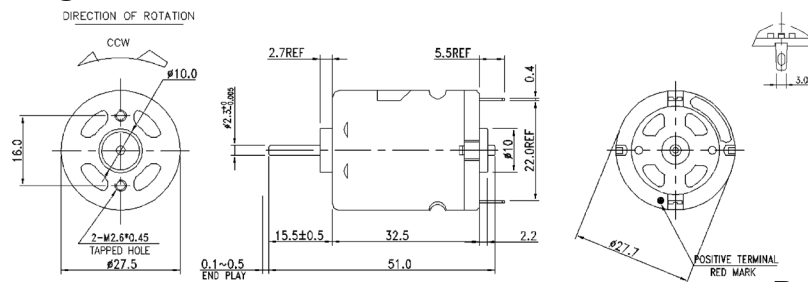
Features

- Suitable for water pumps, robotics etc..
- Counter-clockwise rotation
- High torque 5 pole DC motor with wide operating range 12V to 24V
- Mounting holes 2× M2.6 × 0.45 tapped

Specifications

Operating Range	: 12V to 24V (Nominal 18V)
No Load Speed	: 18000 RPM ±10%
Motor Dimensions (L×Ø)	: 32.5×27.5mm
Shaft Dimensions (L×Ø)	: 12.8×2.3mm
No Load Current	: 0.32A
Load Speed	: 14350 RPM ±8%
Current at Maximum Efficiency	: 1.3A
Rated load (with fan)	: 65g-cm
Stall Torque	: 55g-cm (Min.)
Weight	: 52g (approx)

Diagram



Part Number Table

Description	Part Number
DC Motor, 12V to 24V, 18,000RPM	PEL00882

Dimensions : Millimetres

Important Notice : This data sheet and its contents (the "Information") belong to the members of the AVNET group of companies (the "Group") or are licensed to it. No licence is granted for the use of it other than for information purposes in connection with the products to which it relates. No licence of any intellectual property rights is granted. The Information is subject to change without notice and replaces all data sheets previously supplied. The Information supplied is believed to be accurate but the Group assumes no responsibility for its accuracy or completeness, any error in or omission from it or for any use made of it. Users of this data sheet should check for themselves the Information and the suitability of the products for their purpose and not make any assumptions based on information included or omitted. Liability for loss or damage resulting from any reliance on the Information or use of it (including liability resulting from negligence or where the Group was aware of the possibility of such loss or damage arising) is excluded. This will not operate to limit or restrict the Group's liability for death or personal injury resulting from its negligence. pro-ELEC is the registered trademark of Premier Farnell Limited 2019.