



## User Guide

UG000400

# AS7341 11-Channel Spectral Sensor

## Evaluation Kit

AS7341 EVAL KIT

v5-00 • 2019-Nov-25

---

# Content Guide

<b>1</b>	<b>Introduction.....</b>	<b>3</b>	6.8	Main Window.....	34
1.1	Kits Content.....	3	6.9	ALS Light Detection .....	37
1.2	Ordering Information .....	5	6.10	Reflection Mode .....	41
<b>2</b>	<b>Getting Started.....</b>	<b>6</b>	6.11	Tab Log.....	42
<b>3</b>	<b>Hardware Description.....</b>	<b>7</b>	6.12	Flicker Log.....	42
3.1	Hardware Architecture .....	7	6.13	Detection Log.....	42
3.2	Power Supply .....	8	6.14	Flicker Detection .....	43
3.3	Onboard Example LEDs .....	8	6.15	Register Mapping.....	46
3.4	Connector Pinout Description .....	10	6.16	Tracer.....	47
3.5	Schematic.....	12	<b>7</b>	<b>Error Messages List .....</b>	<b>50</b>
<b>4</b>	<b>Optical Diffuser .....</b>	<b>14</b>	<b>8</b>	<b>Special Details for Other AS7341 Devices Using the AS7341 Eval Kit GUI.....</b>	<b>53</b>
<b>5</b>	<b>Calibration.....</b>	<b>16</b>	8.1	Additional Details When Using an AS7341 PEN with EEPROM.....	53
<b>6</b>	<b>Software .....</b>	<b>22</b>	<b>9</b>	<b>Additional Documents .....</b>	<b>54</b>
6.1	Software Installation .....	22	<b>10</b>	<b>Revision Information.....</b>	<b>55</b>
6.2	Initialization Files .....	23	<b>11</b>	<b>Legal Information .....</b>	<b>56</b>
6.3	AS7341 EVM Graphical User Interface .....	30			
6.4	Tab File .....	30			
6.5	Hot Keys.....	30			
6.6	Sensor Board Test .....	31			
6.7	Mode of Operation .....	32			

# 1 Introduction

AS7341 EVAL KIT is a platform to evaluate **ams** AS7341 11-channel spectral sensor’s applications and to demonstrate different use cases based on **ams** spectral sensing. The **ams** EVK AS7341 realizes basic functions to get Sensor’s ADC counts based on alternative setups and includes special functions to demonstrate application specific tasks (ALS Ambient Light Sensing, Reflection Mode, Flicker Detection and Spectral and Color Mask Compare). Perhaps, these functions need a hardware adaptation (e.g. LED on board for reflection) or additional an optional mechanical interface, which must be ordered separately. In general, there are two available standard kits for the AS7341 EVK depending on the use case and optical adapters.





- The standard kit ALS to measure lighting includes the hardware version without LEDs on board, a diffuser in front of the Sensor and with a maximum field of view. It represents the standard kit (see Figure 1) for applications with light sources in front of the sensor e.g. for light measurement/detection or liquid measurements in transmission.
- The extended kit for Reflection Mode consists of the Sensor hardware, but with pre-assembled LED (VTC2835-YUJI) and a special adapter in front of the Sensor with 0°/45° geometry for color measurements.

This user guide describes the features and functions of Windows 10 based Evaluation Kit AS7341 and demos based on the same hardware and interface and their standard and specific functions. The GUI is suitable for the CSS EVKs and demos with I<sup>2</sup>C to FTDI Interface.

## 1.1 Kits Content

The standard AS7341 Evaluation Kit exists from following items, shown in Figure 1.





**Figure 1 :**  
Kit Content of AS7341 EVK (ALS)

Item 1 FTDI	Item 2 EVAL KIT with Diffuser in Front Adapter	Item 3 USB Stick	Item 4 Optional Special Backside Adapter
			

Item No.:	Item	Comment
1	FTDI - USB Cable	USB – I <sup>2</sup> C Cable with 10 pol IDC Connector, 3.3V

Item No.:	Item	Comment
2	a0013a0_CSS EVAL KIT AS7341	Evaluation Kit with pre-assembled front adapter and diffuser
3	USB Data Stick	Documents, software, firmware and drivers
4	Special Backside Adapter EVAL Linos 16 EVAL Linos 16-25	Optional: 3D-Printing part, used to adapt the 16mm holder into <ul style="list-style-type: none"> <li>• 16 mm Linos-Nanobank (above)</li> <li>• 25 mm Linos-Bank (below)</li> </ul>

**Figure 2 :**  
**Kit Content of AS7341 EVK Reflection**

Item 1 FTDI	Item 2 EVAL KIT with LED and 0°/45° Optical Front Adapter	Item 3 USB Stick	Item 4 Optional Special Backside Adapter
			

Item No.:	Item	Comment
1	FTDI - USB Cable	USB – I <sup>2</sup> C Cable with 10 pol IDC Connector, 3.3 V
2	a0013a0_CSS EVAL KIT AS7341 Reflection	Evaluation Kit with pre-assembled LED and 0°/45° optical front adapter (without diffuser <sup>1</sup> )
3	USB Data Stick	Documents, software, firmware and drivers
4	Special Backside Adapter EVAL Linos 16 EVAL Linos 16-25	Optional: 3D-Printing part, used to adapt the 16mm holder into <ul style="list-style-type: none"> <li>• 16 mm Linos-Nanobank (above)</li> <li>• 25 mm Linos-Bank (below)</li> </ul>

<sup>1</sup> Customer should add a diffuser in front of the sensor in case of a non-diffuse application

## 1.2 Ordering Information

Ordering Code	Description
AS7341 EVAL KIT	AS7341 11-Channel Spectral Sensor Evaluation Kit
AS7341 EVK REFLECTION	AS7341 11-Channel Spectral Sensor Evaluation Kit for reflection with pre-assembled LEDs and special 0°/45° adapter
a001aa_CSS EVAL KIT Linos 16	Optional 3D-Printing part, used to fit the CSS EVAL KITAS7341 into the 16 mm Linos-Nanobank
a001ba_CSS EVAL KIT Linos 16-25	Optional 3D-Printing part, used to adapt the 16mm holder into the 25 mm Linos-Bank



### Attention

Please, order optional parts separately.



### Information

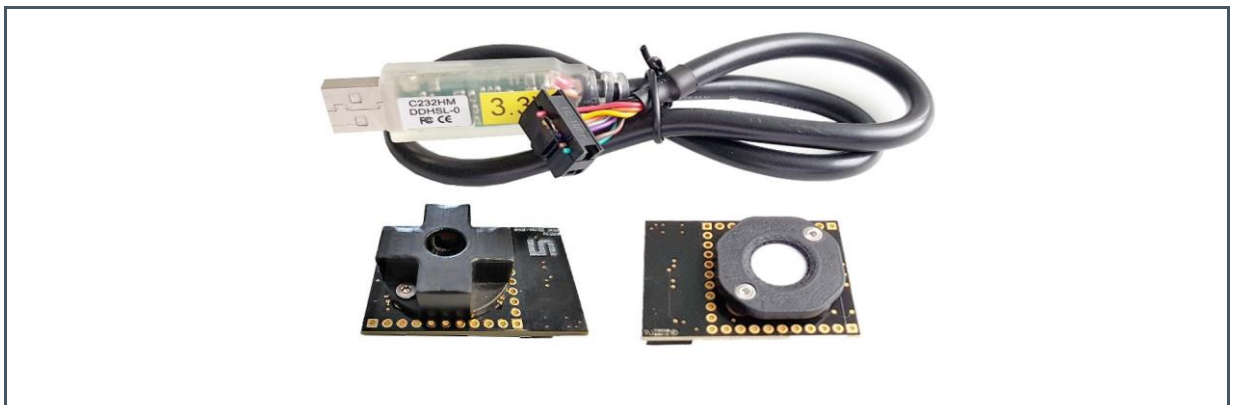
It is also possible to print or modify the adapters customized. See the document path of the USB Stick for the 3D models.

## 2 Getting Started

The Evaluation Kit exists from the FTDI USB cable and the Sensor board with pre-assembled adapters. Adapters are necessary to (front side) fulfil the optical requirements of the AS7341 filter specification (diffuser), application specific requirements (FOV field of view or 0°/45° geometry) and (back side) to fix the EVK into mechanical test systems.

The Sensor Boards has an I<sup>2</sup>C interface, which is converted to UART with physical USB interface and COM-Port driver via FTDI converter. Figure 3 shows the FTDI cable (above) and the AS7341 Sensor Board for Reflection Mode (below left) and the standard version e.g. for Light Detection (below right).

**Figure 3:**  
AS7341 EVAL KITS with Sensor Hardware, Optical Adapters and FTDI Adapter



Select the correct EVAL KIT for your application. Plug the FTDI cable into the socket of the Sensor board. Then connect the kit to PC.

The Evaluation Kit requires a onetime installation of FTDI Virtual COM Port Driver for the USB cable. The installation files for the FTDI adapter are on the USB stick in the setup directories. Please install it as an administrator.

If there is an issue during the installation, please read details in the manual or refer to [www.ftdichip.com](http://www.ftdichip.com) for more information.

Install the AS7341 Software from the AS7341\_Software.msi on the USB stick.

Please see chapter 4 for the software handling and description.

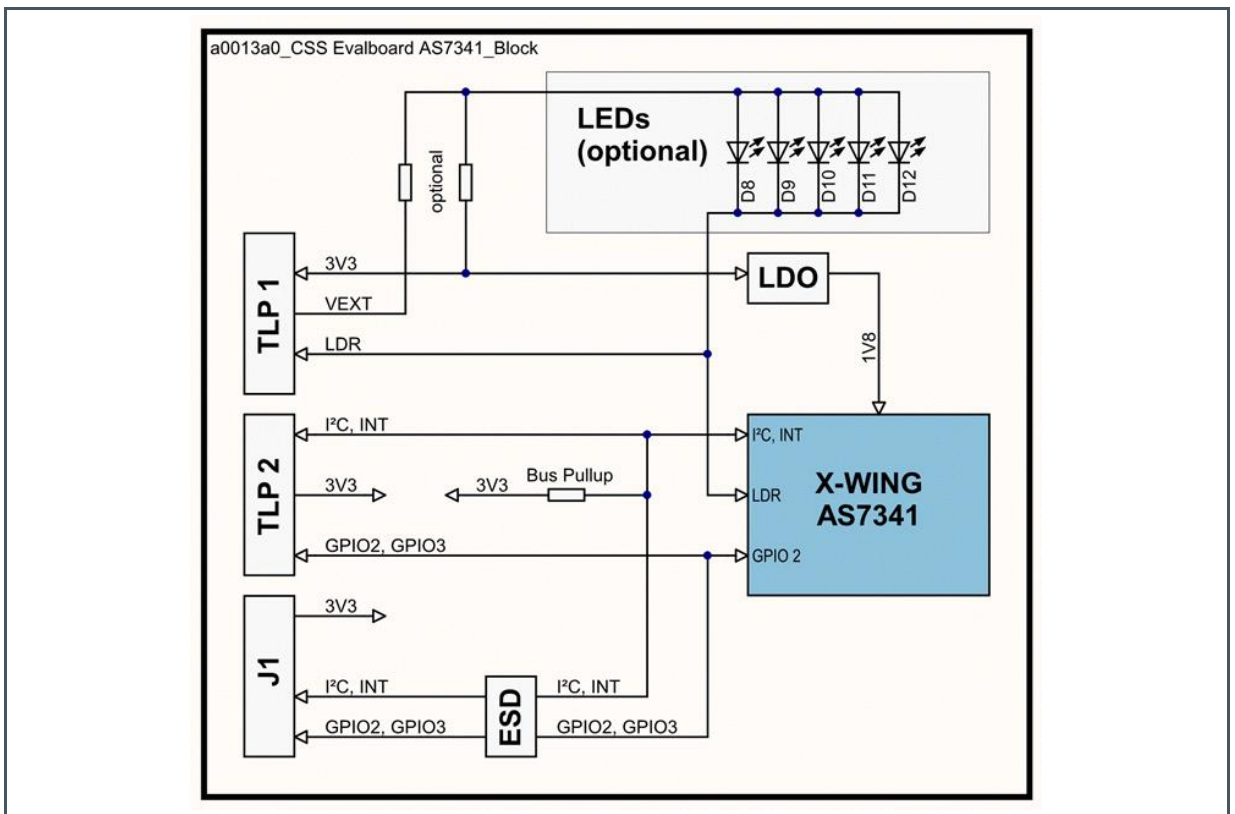
### 3 Hardware Description

The Evaluation Kit is an attachment board for a 1/10 inch hole-grid-plate, or it includes an adapter to an optical bench. Adapters for 16mm/25mm systems are available as accessories from **ams**.

#### 3.1 Hardware Architecture

The Evaluation Kit includes an LDO to provide the 1.8 V supply voltage for the AS7341, ESD protection diodes for the I<sup>2</sup>C bus and GPIO lines and placeholder for optional LEDs. The LEDs<sup>2</sup> can be supplied either from the FTDI adapter or externally via connector TLP1. A 10 pole IDC socket for connecting the FTDI adapter cable (J1) and 1/10 inch rows of holes for mounting on a 1/10 inch hole-grid-plate or to directly contact signals (TLP1...2).

**Figure 4 :**  
**Board Block Diagram**



<sup>2</sup> Must be soldered by customer or use AS7341 EVK Reflection. Function LED current and light intensity and/or maximal driver current is depending on the used LEDs and connected power supply. Check the LED data sheet before using this LED setting. A too high LED current can destroy LEDs.

### 3.2 Power Supply

In general, the FTDI converter realizes the 3.3 V power supply for the sensor board. The converter is part of the original package of the AS7341 EVK. Customer can use on board alternative pre-designed power supplies. For more details, see Figure 9.



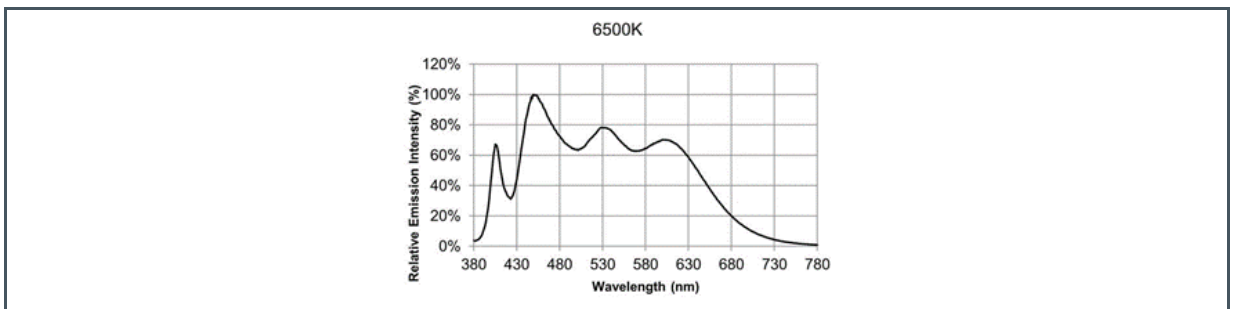
#### Information

Make sure to use the original adapters and converters completely before connecting the hardware to USB.

### 3.3 Onboard Example LEDs

Both example LEDs on this EVAL Board are the Yuji YJ-VTC-2835-G01-65, a broadband white light LED. The typical spectral distribution shown in figure 5 below:

**Figure 5:**  
Typical Spectral Distribution of Yuji YJ-VTC-2835-G01-65



If the EVAL Board power supply 3.3 V, it is not possible to get a current bigger than 10 mA through both LEDs. This limit is given by a 3.3 V power supply and both 10 Ohm series resistors.

**Figure 6:**  
Forward Current vs. Forward Voltage of Yuji YJ-VTC-2835-G01-65

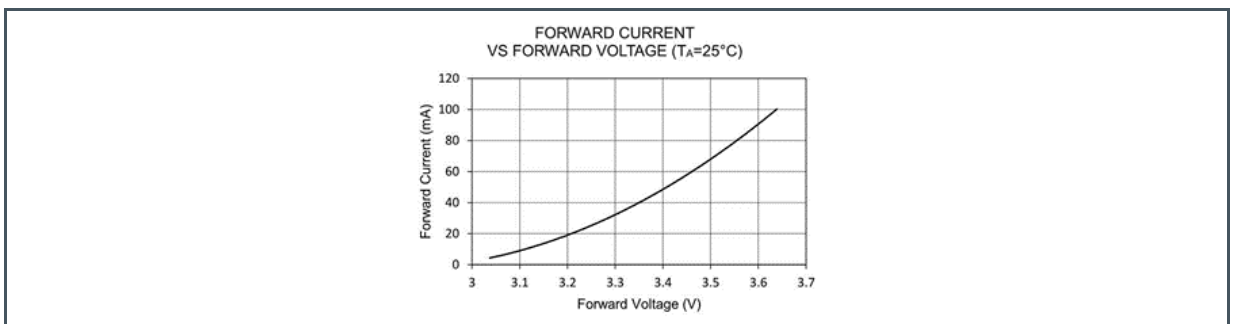
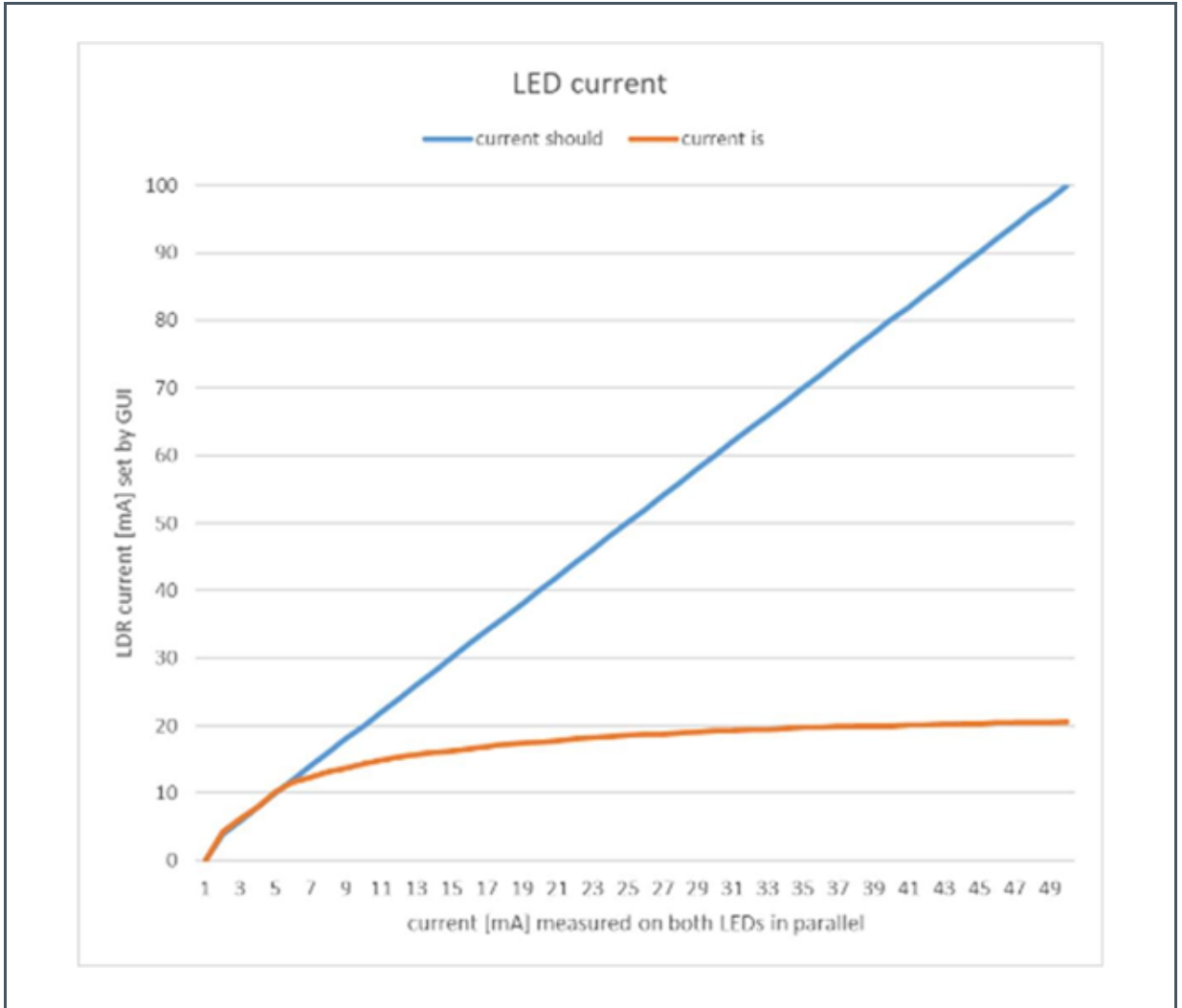




Figure 7 describes the nonlinearity between GUI set current and the real current through the LEDs by 3.3 V power supply.

**Figure 7:**  
Nonlinearity between GUI Set Current and a Real Measured Current



It is possible to connect the EVAL board to a bigger power consumption voltage. Pin1 on TLP1 is for external LED voltage distribution. (Pin2 TLP1 is GND). R11 is to disassemble and fitted as R13.

### 3.4 Connector Pinout Description

Figure 8:  
Connector Pinout Description

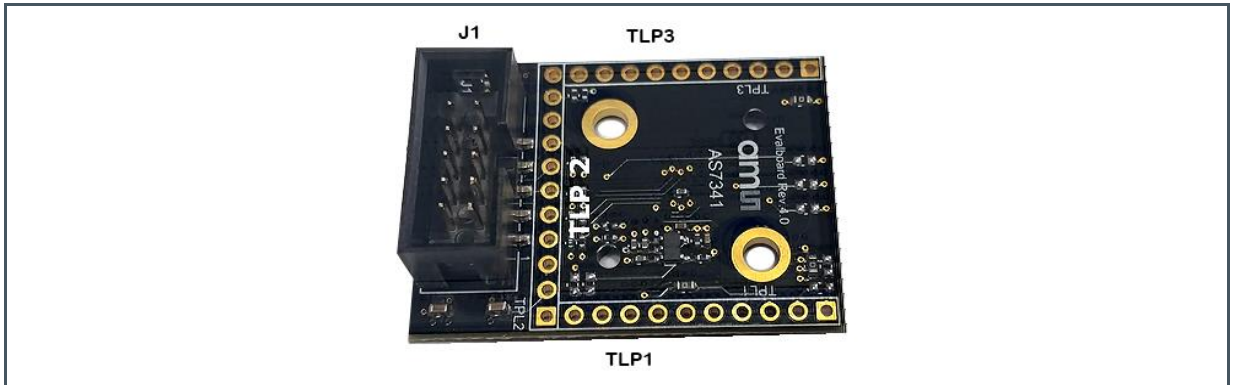


Figure 9:  
Overview Connectors and Interfaces

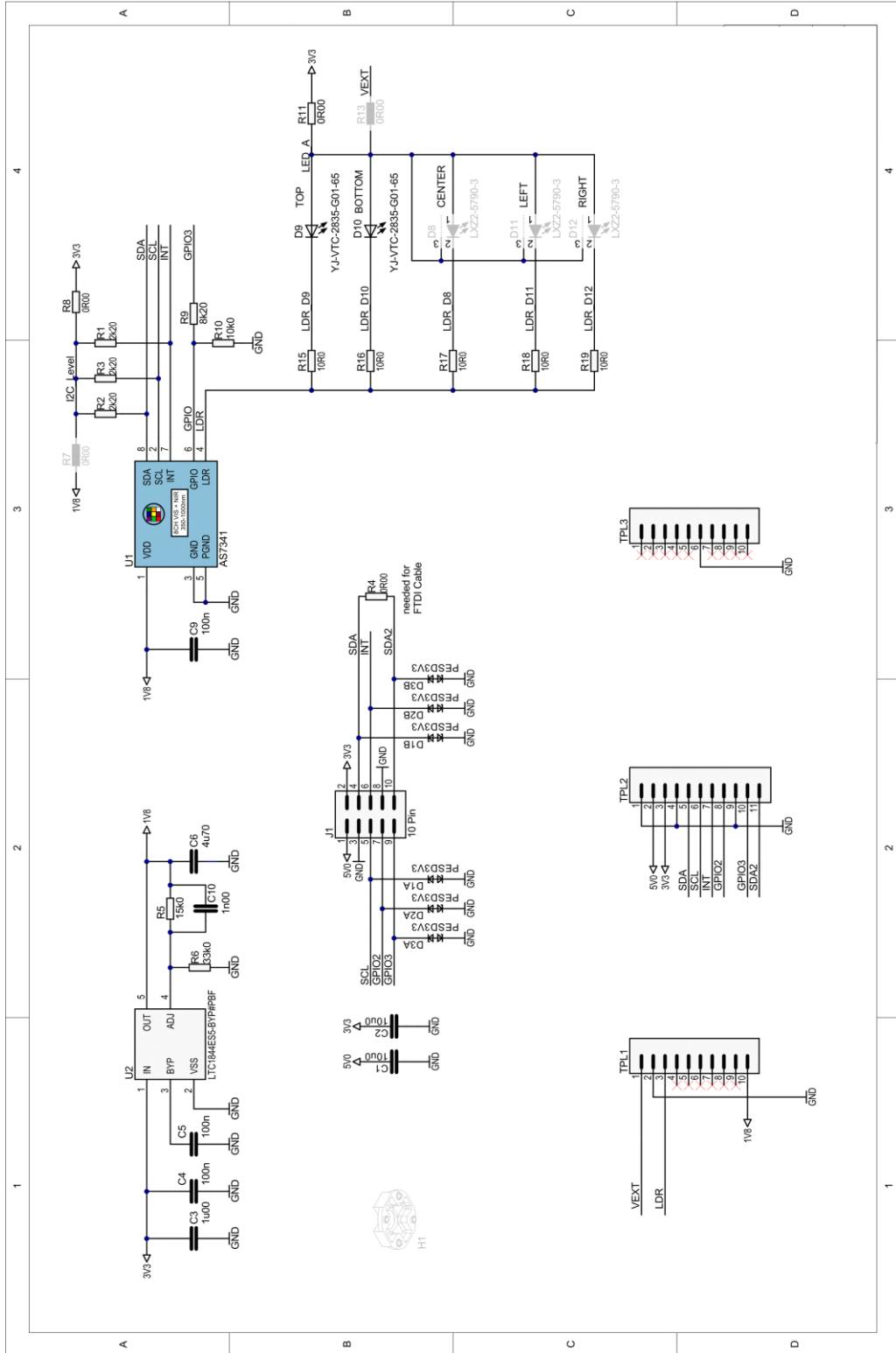
Designator	Comment
J1	10 pol. IDC Socket, connect to PC via FTDI Adapter (3.3 V)
TLP 1	VEXT, LDR, GND
TLP 2	3V3 (5V0), I <sup>2</sup> C, INT, GPIO
TLP 3	GND

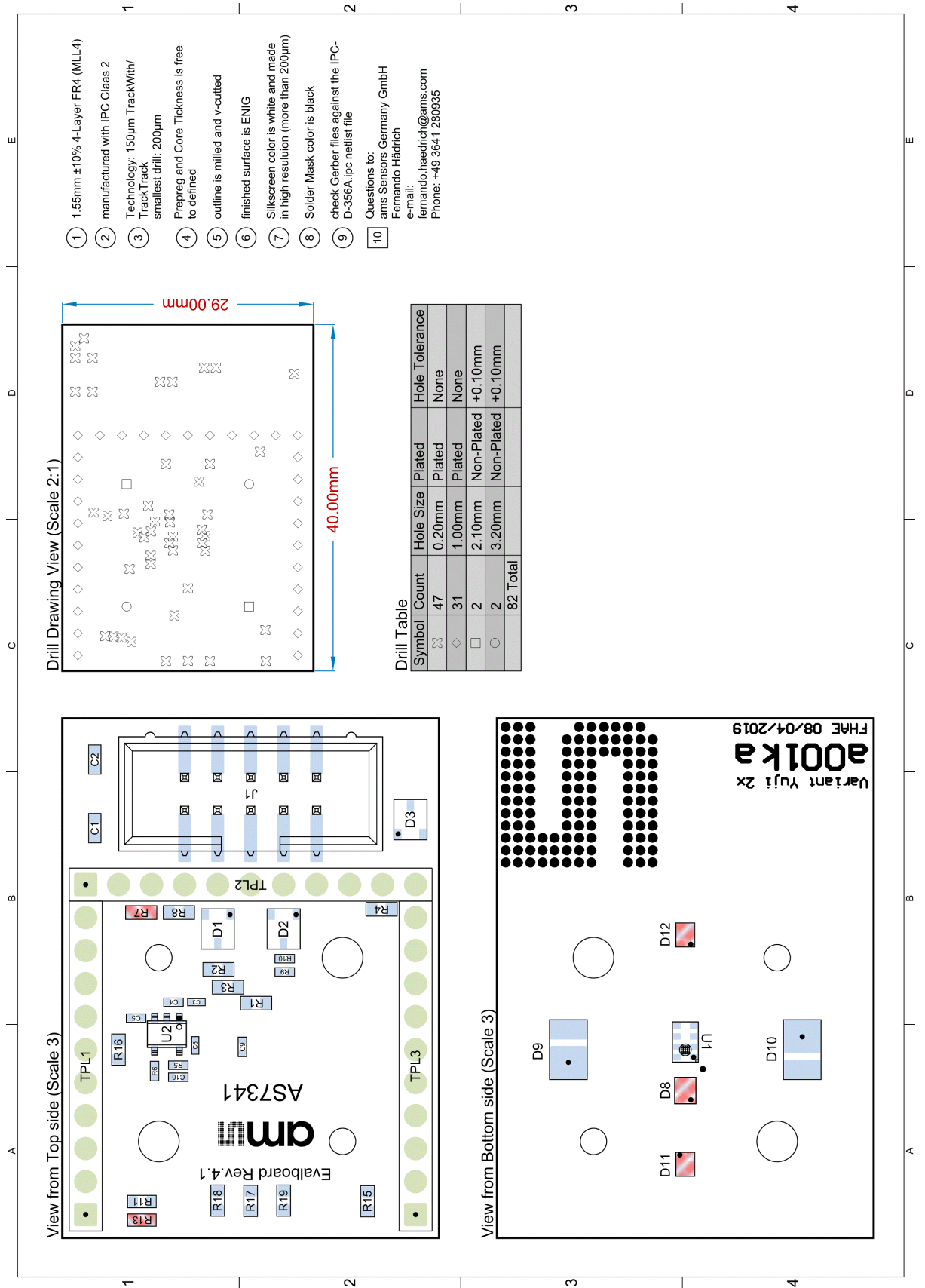
**Figure 10:  
Connectors**

Pin Number	Net Name	Function
TLP1 1	VEXT	Supply the optional fitted LEDs from an external source
TLP1 2	GND	Ground
TLP1 3	LDR	Constant current sink from AS7341
TLP1 4...9	NC	Not connected
TLP1 10	1V8	External power supply for AS7341 - before using this pin, disassemble the LDO.
TLP 2 1	GND	Ground
TLP 2 2	NC	Not connected
TLP 2 3	3V3	3V3 power input if there is no power on J1 (FTDI adapter) or 3V3 power output, if the power comes over J1
TLP 2 4	GND	Ground
TLP 2 5	SDA	I <sup>2</sup> C Data Signal
TLP 2 6	SCL	I <sup>2</sup> C Clock Signal
TLP 2 7	INT	AS7341 Interrupt Signal
TLP 2 8	GPIO 2	GPIO signal, bridged to the FTDI adapter
TLP 2 9	GND	Ground
TLP 2 10	GPIO 3	GPIO signal, bridged to the FTDI adapter and the AS7341
TLP 2 11	SDA2	Is normally bridged to SDA, only needed for FTDI adapter
TLP 3 1..5, 7..10	NC	Not connected
TLP 3 6	GND	Ground
<b>J1</b>		
J1 1	NC	Not connected
J1 2	3V3	3V3 power input from the FTDI adapter
J1 3	GND	Ground
J1 4	SDA	I <sup>2</sup> C Data Signal
J1 5	SCL	I <sup>2</sup> C Clock Signal
J1 6	INT	AS7341 Interrupt Signal
J1 7	GPIO 2	GPIO signal, bridged to TPL 2
J1 8	GND	Ground
J1 9	GPIO 3	GPIO signal, bridged to the AS7341
J1 10	SDA2	Is normally bridged to SDA, only needed for FTDI adapter

### 3.5 Schematic

Figure 11 :  
Schematic Sensor Board





## 4 Optical Diffuser

For none-diffuse applications<sup>3</sup>, a translucent diffuser in front of AS7341 EVK is required, which uses scattering centers to spread incoming directed light in pseudorandom directions. These scattering centers can be very small surface structure on top (e.g. grounded glass) or small white particles inside (e.g. opal glass) the diffuser. This property divides diffusers in two main groups of surface diffusers and volume diffusers. The selection of a diffuser is always depending on the use case, the irradiance on diffuser + Sensor and the needed flexibility of the setup.

A surface diffuser with high transmission and widest radiation pattern as possible should use for low light measurement applications. Narrowing the radiation pattern for higher transmission efficiency is only possible for detecting large and homogenous light sources (see following chapter) or if the conditions for calibration are the same as measurement geometry and stability. Calibration can compensate under stable conditions chromatic effects, deviations and others.

In applications under changing conditions regarding size, direction and/or orientation of the light source a volume diffuser (e.g. Lexan 8B28 – opaque white) with nearly Lambertian and Achromatic Characteristic is the best choice to create a Sensor system which is not affected by direction of incoming light.

The AS7341 Eval Kit includes a Kimoto 100 PBU diffuser direct above the Sensor. This diffuser has been selected according to excellent technical parameters taking into account price and availability. The diffuser is located in two simple plastic shells and screwed on the Evaluation Kit (see Figure 13). The following table lists the recommended diffuser parameters and/or the parameters of the diffuser Kimoto in the AS7341 Eval Kit (=recommend parameters for similar diffuser).

**Figure 12:**  
**Recommend Diffuser Parameters**

Parameter	Value
Diffuser Material	Kimoto 100 PBU
Diffuser Thickness	125 microns
Transmission	66 %
Haze	89.5 %
Half-Angle	35.5°

<sup>3</sup> e.g. Ambient Light Sensing in contrast to reflections which are mostly diffuse

**Figure 13:**  
Installation of Diffusor Holder ALS<sup>4</sup>



#### Information

The diffuser specification is depending on the customer application. Therefore, check the technical parameters of the standard diffuser for technical details before you start any tests. Changing of the diffuser is possible. Be careful and do not touch diffusers with fingers in case of any mounting activities. The surface of diffusers is very sensitive and any touches or other mechanical stress or dirty can change the optical behavior dramatically. Changing the diffuser and re-assembling with the same typically changes calibration parameters and requires recalibration for optimal results.

For more details, please order our application note for AS7341 'APN-opto-mechanic'.

<sup>4</sup> The assembly is similar for AS7341 EVK Reflection and/or the backside adapters

## 5 Calibration

The spectral characteristic of a sensor varies in the specified range over series.

Other disruptions can be:

- Variances, deviations and limitations in technologies e.g. sensor and LED results shifts and differences over time, temperature and lots;
- Variances in the diffuser material will cause a variate in absorption/emission/transmission;
- Little variations of Sensor filter peak sensitivity and shape of channels depending on thickness tolerances in filter deposition (layers thickness of high plus low refracting index);
  - Synchronous variation will shift the transmission function in maximum range of  $\pm 5\text{nm}$ ;
  - Asynchronous variation will deform the shape of spectral transmission and may change the stop band performance (overcrossing);
- Variation of spectral shape because of tolerances of the aperture (device packaging and field of view (FOV) of the system);
  - Increasing the incidence angle or FOV will cause a transmission shift to shorter wavelength and deform the shape of the spectral transmission function;

The sum of all errors adds up and leads to inaccuracies and strong differences from device to device. On the other side, devices should have high accuracy, comparability, and repeatability over a long period, independent of changing conditions. Therefore, a calibration is necessary which considers all existing conditions and deviations. High accuracy measurement needs in the end a calibration to increase spectral performance, repeatability, and comparability of the Sensor.

A spectral sensor calibration often consists of 2 phases.

In Phase 1, the Sensor raw data is corrected Sensor specifically to compensate known variations and drifts during measurement. These can be, for example, corrections of temperature fluctuations, optical and/or electronic offsets and constant deviations based on Sensor setups. The result of this step represents the basis for the actual Sensor system calibration, which takes into account the compensation of the device fluctuations.

For best performance and as step 2, a Sensor system “device-to-device” calibration (one device to one specific target for calibration) is recommend, which respects all final device specific optical effects in the special system and affects the spectral sensitivity in the application of this device.

Other calibration methods are possible, such as using a Golden Device as a calibration standard for all Sensors of a series (Lot or Type calibration). This method usually requires less effort, but is usually less accurate because the exemplary scattering is not considered.

There is no general solution for calibration. The calibration must always be adapted to the target, the sensor, the application and its required accuracy and effort. In the following, some examples are described.



With spectral Sensors, the calibration is depending on very much on the application, but in any case, it has to realize a uniformity of the Sensors as well as the matching into the application and increasing accuracy. The uniformity of the sensors is an identical sensor behavior in the application with compensation of all production or system and ambient deviations.

For example, the Sensor measures the physical quantity via the references of the calibration and Sensor results represent direct the concentration of a substance in percent (e.g. NTU as typical unit for turbidity measurement). This requires a formula or reference where Sensor counts can be convert direct into the concentration in percent. The Sensor response of the AS7341 consists of 10 numerical values (without the flicker channel but using n=10 ... CLEAR and NIR in calibration) or 8 numerical values (only using n=8 filters in VIS) of the Sensor channels. Due to manufacturing and based on all deviations in the system, the sensitivity of each channel can vary spectrally or absolutely.

A simple method to compensate these deviations is a simple correction of each channel 'Ch' with a correction factor 'Cor' on a target. The software compares a selected target with the measured Sensor value. Use deviations for all filters of both as a ratio and factor to correct each Sensor values for other measurements. This is the method one-point-calibration (e.g. white or spectral balance). It is in the AS7341 Evaluation Kit as correction factor in the Init\_file.txt (see chapter 6.2).

**Equation 1:**

$$\begin{pmatrix} ChR F1(t) \\ ChR F2(t) \\ ChR F3(t) \\ \vdots \\ ChR Fn(t) \end{pmatrix} = \begin{pmatrix} Cor F1 \\ CorF2 \\ CorF3 \\ \vdots \\ Cor Fn \end{pmatrix} * \begin{pmatrix} Ch F1(t) \\ Ch F2(t) \\ Ch F3(t) \\ \vdots \\ Ch Fn(t) \end{pmatrix}$$

**Figure 14:**  
Correction Factors in Init\_file.txt

```
// Correction factor of Raw values
CorrectionFactor=0.966685671,0.982922517,1.016964706,1.027684041,1.037:
```

For a Spectral Reconstruction, a correction matrix is required that converts the Sensor signals with all filter (e.g. 8 x VIS and NIR + CLEAR => 10) into a reconstructed spectrum according to the step width (n) of the targets.

**Equation 2:**

$$\begin{pmatrix} S380nm \\ \vdots \\ S1000nm \end{pmatrix} = CM \begin{pmatrix} Cor 380nm F1 \dots Cor 380nm Fn \\ \vdots \\ Corn 1000nm F1 \dots Cor 1000nm Fn \end{pmatrix} * \begin{pmatrix} Ch F1(t) \\ \vdots \\ Ch Fn(t) \end{pmatrix}$$

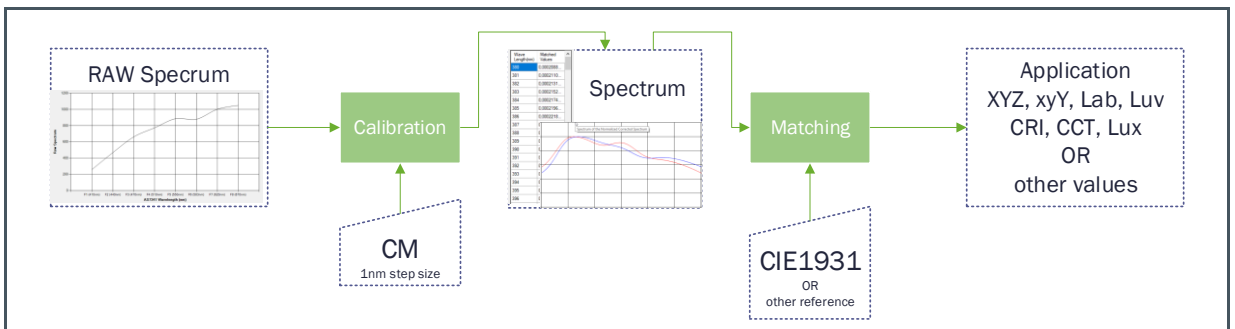
The accuracy of transformation and spectral reconstruction depends on the quality of the coefficients of the Correction Matrix CM, which have to be calculate by the calibration. This method can be used in the AS7341 GUI by definition a calibration matrix (e.g. CM for ALS Light Detection – Light Detection Calibration Matrix File = 'CM\_L1\_v1\_0\_0.csv', see chapter 6.2).

**Figure 15:**  
Calibration Matrix for Light Detection

Wavelength	F1	F2	F3	F4	F5	F6	F7	F8	Clear	NIR
380	0,19414	-0,03387	0,0095	-0,00185	0,001581	-0,00036	0,000774	-0,00028	-0,00695	-0,00025
381	0,19611	-0,03421	0,009596	-0,00187	0,001597	-0,00037	0,000782	-0,00028	-0,00702	-0,00025
382	0,19809	-0,03456	0,009693	-0,00189	0,001613	-0,00037	0,00079	-0,00029	-0,0071	-0,00025
...	...	...	...	...	...	...	...	...	...	...
999	0,022006	-0,00812	0,008504	0,003958	0,000851	0,005155	0,001194	0,006027	-0,00953	0,009512
1000	0,022066	-0,00821	0,008532	0,003926	0,000856	0,00513	0,001198	0,006007	-0,0095	0,009459

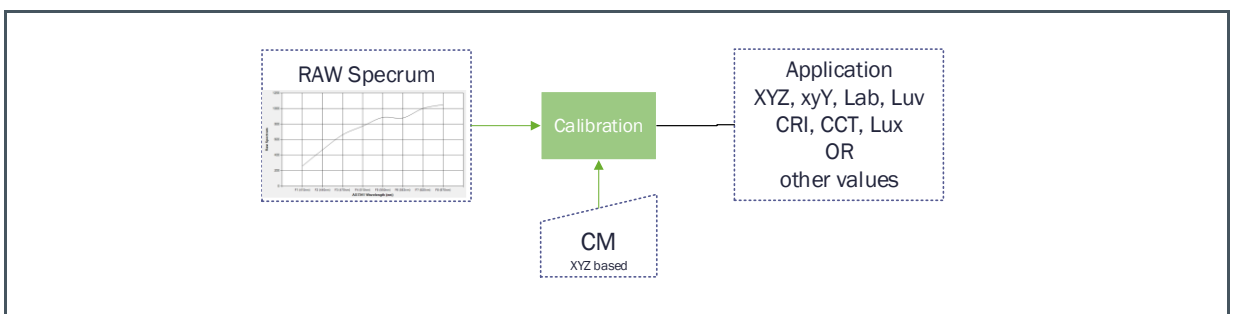
The reconstructed Sensor spectrum must be matched into the CIE1931 Color Space or any other application specific unit. That can be done very simple by overlapping (multiplying) the spectrum and standard observer function CIE1931 XYZ. The result of this overlapping are the specific XYZ values for the reconstructed spectrum, which can be calculated into xyz, xyY, CCT and other CIE1931 typical results.

**Figure 16:**  
Example: Matching Spectrum into the CIE1931 Color Space



Alternatively, the correction matrix can directly contain the calibration data (here rows) for X, Y and Z. Calibration is then performed directly via CIE1931 XYZ Target Transformation.

**Figure 17:**  
Example: Matching Spectrum direct into the CIE1931 Color Space



If, for example, the Sensor measures the concentration of a substance in a sample, the filter function(s) or matrix must provide the corresponding data in the software for conversion. These data must be available prior to matching from sample measurements during development (spectral fingerprint) or as reference data from standards of the market. The result here is often one or more mathematical functions or look-up tables, which convert the digits measured by the sensor directly into a physical unit (Sensor matching), whereby the tolerances are also compensated (Sensor uniformity) via sensor-specific correction variables.

The GUI for the AS7341 Evaluation Kit supports all calibration methods. The control takes place via the input files for calibration. GUI uses the correction matrix (lines) to recognize the calibration method, step size and other parameters specified by the user and considers this in the further calculations and software outputs (see also chapter 6.2.2).

The GUI setup installs some files for calibration as examples. These installed calibration data are NOT the result of a “generally accepted” device calibration with the highest accuracy for each device. If an evaluation kit is used under conditions similar to those in the calibration, the maximum accuracy that can be achieved is that of a type or batch calibration. Type/batch calibration is always performed by calibrating a golden device (=typical sensor), which is used as a model for a number of sensors (batch, type) for calibration. Its calibration data are used for all sensors of this type/batch without paying attention to exemplary scattering and differences.

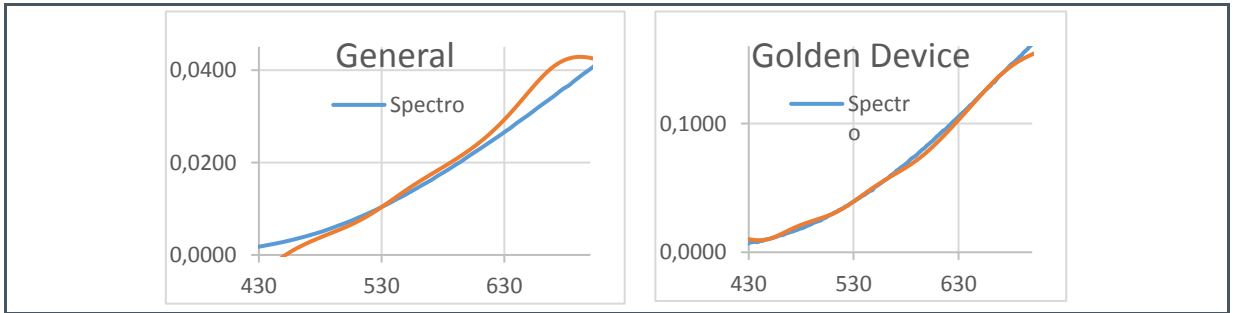
A Device Calibration considers all device specific realities, deviations and needs an individual calibration process. It is always the target to achieve the highest accuracy. Therefore, use the pre-installed database for type calibration and other spectral sensitive functions (SpectralMaskCompare, color recognition) only to see form and example of these data and, if necessary, replace them by your own application specific database for a device calibration.

Init\_files control the database for calibration exists from alternative files for Light Detection and Reflection Mode. In standard, the correction vectors or other parameters can be defined as default ‘1.0’, i.e. by default no correction of the raw values takes place. In this case, use such parameters to adapt Sensor functions. The file for the correction matrix Lighting contains a universal standard calibration for matching the Sensor raw values in spectra for standard light sources. The values are based on specified and calculated theoretical or typical filter curves and do not take into account any device specific scattering of the actual Sensors. The standard calibration can be used limited for demonstrations, but should be replaced by alternatives for higher accurate measurement and control.

Alternatives are target calibration for applications where the targets and conditions are constant. Another method is a device calibration on the spectral filters as golden device calibration with subsequent adjustment of the Sensors in series to the golden device. The methods are manifold and strongly dependent on the application, requirements, and system conditions. The result is negatively affected, for example, by step overlaps between light sources and filters, strong infrared components of the light sources or spectral components where the Sensor has only a low or no sensitivity.

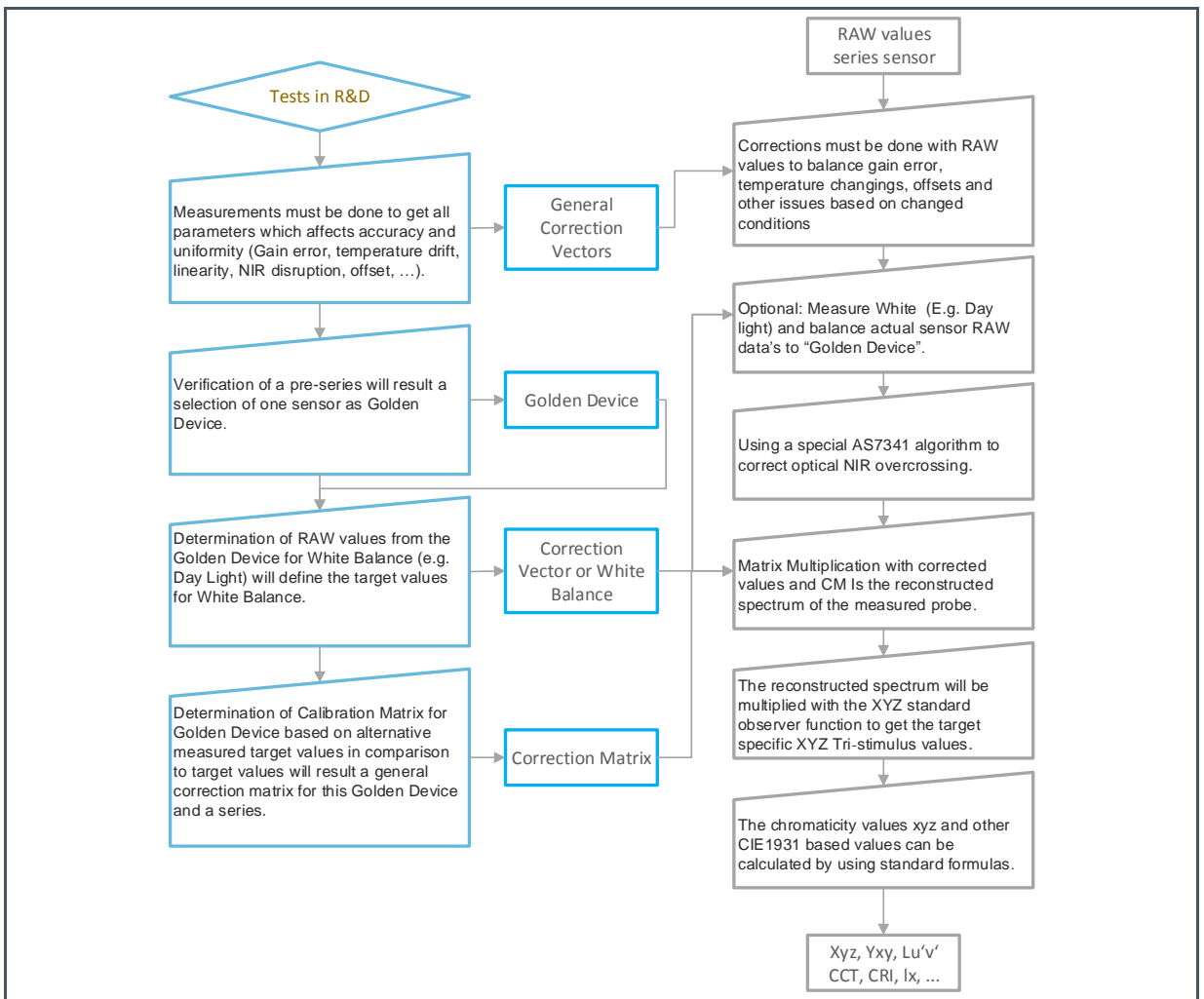
Figure 18 shows the reconstructed spectrum of an identical standard light source ‘INC A’, compared spectrometer and Sensor results where the Sensor raw results were calibrated by using the General calibration matrix and/or a (Golden) Device matrix. In this example, the result of the Device calibration is better by a factor 5 (see also the application note AS7341\_QG000139).

**Figure 18 :**  
**Results of Alternative Correction Matrices (left General, right Device Calibration)**

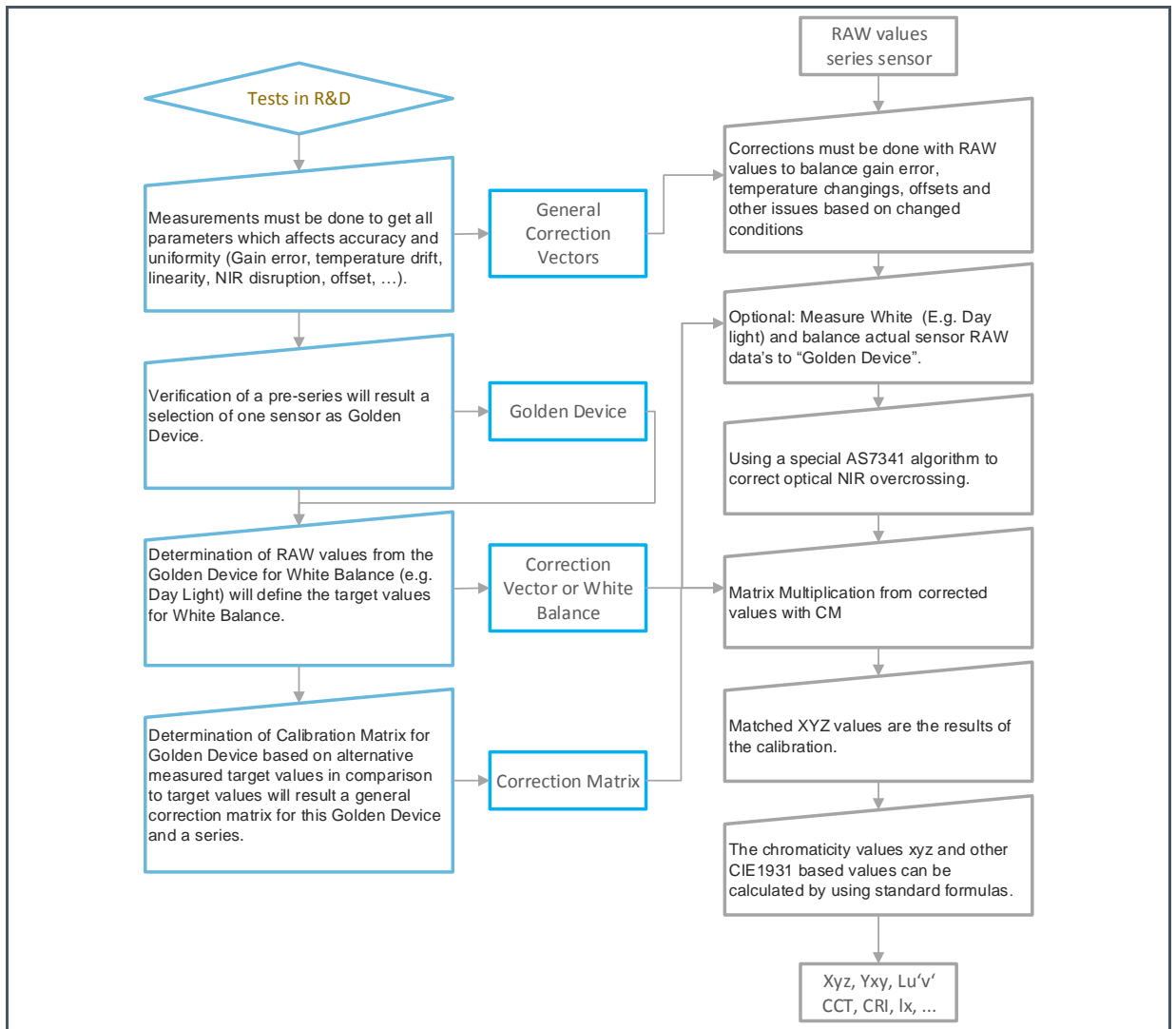


The following figures shows processes of the alternative used calibration methods, which customer can use by definitions in the initial files.

**Figure 19:**  
**From Spectral RAW Values to Recalculated Spectrum to CIE1931 XYZ Results**



**Figure 20:**  
From Spectral RAW Values to CIE1931 XYZ



# 6 Software

## 6.1 Software Installation

The GUI AS7341 is Windows 10 compatible where .net Framework 4.5.2 or later versions is pre-installed. It is mandatory to install 32-bit Visual C++ redistributable for visual studio 2015 runtime. vc\_redist.x86.exe setup is included with the evaluation kit.

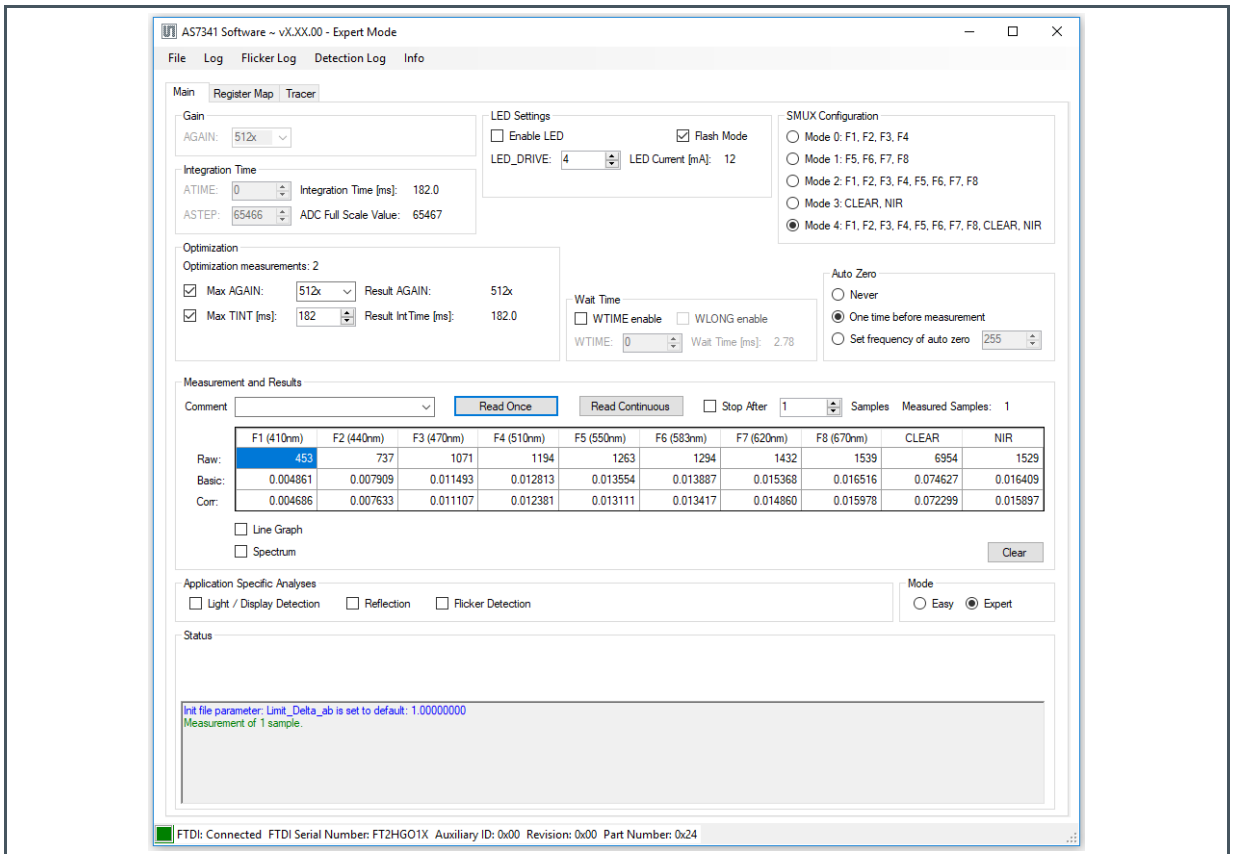
Before connecting the FTDI adapter to the computer, the specific FTDI driver must installed. Start the CDM21216\_Setup.exe and follow the step instructions.

Then connect the AS7341 EVK to the computer via the FTDI adapter.

Start the GUI Installation software from USB stick AS7341\_Demo\_Software.exe (\*.msi) and then the GUI from the program directory C:\Program Files (x86)\ams AG\AS7341 Demo.

Now, it should show the Main Window and the successful connection to the EVK in the status bar and footer line (see Figure 21).

**Figure 21:**  
Main Window in GUI with Expert Mode and Status Bar



The GUI needs some initialization files, which will be installed during the setup in the user directory `c:\Users\user\AppData\Roaming\ams AG\AS7341 Demo\` (see Figure 22).

During the time of installation, the standard initialization files are generated in the folder `UserData` (`C:\Users\xxx\AppData\Roaming\ams AG\AS7341 Demo`). In addition, each time the GUI checks whether these standard files still exist in this area. If not, missing files are installed again by the GUI.

Consider to save the previously used initialization files if needed. For more details, see chapter 6.2.



### Attention

A de-installation process will delete also standard initialization files. Therefore, make a backup or copy of such files in case of using them after de-installation or use alternative file names for the initialization files.

**Figure 22:**  
**User Directory with Initialization Files**

Name	Date modified	Type	Size
UserData	17-Jul-19 10:56 AM	File folder	
AS7341_Script tracer.txt	23-Apr-19 3:30 PM	Text Document	1 KB
AS7341_Script.txt	23-Apr-19 3:30 PM	Text Document	1 KB
AS7341_ScriptLog tracer.txt	23-Apr-19 3:30 PM	Text Document	1 KB
CM_L1_v1_0_0.csv	10-Jul-19 11:10 AM	Microsoft Excel C...	4 KB
CM_R_v1_0_0.csv	10-Jul-19 11:10 AM	Microsoft Excel C...	1 KB
init_file.txt	10-Jul-19 11:12 AM	Text Document	2 KB
Mask_L_v1_0_0.csv	10-Jul-19 11:10 AM	Microsoft Excel C...	2 KB
Mask_R_v1_0_0.csv	10-Jul-19 11:10 AM	Microsoft Excel C...	3 KB

## 6.2 Initialization Files

The initialization files (see Figure 22) supply important parameters for the GUI. Customer can adapt these files but note, changings of any specified parameters in these files can affect the Sensor results and accuracy dramatically. We recommend simulating any adaptations previously and making a file backup of the initialization files before changing.

In standard, the initialization files<sup>5</sup> are saved on hard disk in the directory `C:\Users\xxx\AppData\Roaming\ams AG\AS7341 Demo`<sup>6</sup> after installation the GUI:

- `Init_file.txt` - necessary for all GUI functions. It includes values to control functions and limitations, e.g. Sensor signal correction, Light Detection.
- `CM_x1_v1_0_0.csv` – Correction matrices for `x=L` Light measurement and `x=R` Reflection Mode.
- `Mask_x_v1_0_0` – Database for `x='L'` SpectralMaskCompare (Light measurement) and `x='R'` Color Recognition (Reflection Mode)

<sup>5</sup> Change the AppData directory properties in case of the directory or subdirectories are not visible or read-only

<sup>6</sup> Replace XXX by username

Comments are not considered by the GUI and can be done as any comment in all initialization files by the characters `'/'` in the beginning of a line.

All initialization files must be checked/adapted/changed before the GUI is running. The GUI will not consider adapted parameters in these files by active running GUI. GUI will not change the Init\_file or Correction Matrix files but adapt or create Mask files in case of this function was selected and new mask created and saved. Check own adaptations of these files if the GUI print out a syntax error. The syntax and format of parameters is fixed and among them depending on the MS Windows region on the used computer

## 6.2.1 Init\_file

Init\_file can include the following commands and parameters.

- XXXXXFile = xxxxxx.csv: are the standard or user defined files for calibration (see previous section), spectral compare and other functions, which are used by the GUI as input files (in case of none EEPROM hardware version). Otherwise, the GUI will generate a file selecting dialog to select these files after choosing the application light or Reflection Mode.  
In case of any AS7341 Demo with EEPROM on board (e.g. AS7341 Pen), the parameters from the Init\_file, correction matrix and spectral compare will be loaded from EEPROM.
- OffSet: can be used to adapt RawCounts (results from the analog-to-digital converter). The specified values for the single channels F1...F8, Clear and NIR in the Init\_file will be added/subtracted from the measured RawCounts (calculated value from measured RawCounts, Integration time and gain) before calculation into BasicCount.  
Use the offset correction for example to compensate ambient light or other constant deviations. Offset in Init\_file refers only to all functions in the Basic window. Offset for ALS and Reflection Mode is defined in the calibration data files separately. If not mention in calibration files, offset will be used from Init\_files. When offset values not defined in any of the files, default value zero considered for each channels.
- CorrectionFactor - is to adapt RawCounts by multiplication the single CorrectionFactors. The specified factors for the single channels F1...F8, Clear and NIR in the Init\_file will be multiplied with BasicCounts. Use this correction factor for customized calibration (see chapter 5), e.g. to compensate effects of diffusers or other balance operations. Correction factor in Init\_file refers only to the functions in the Basic window. Correction factors for ALS and Reflection Mode is defined in the calibration data files separately. If it is not mentioned in these files, it will choose from Init\_files. When correction factors are not defined in any of the files, the default value 1 taken for each channels.
- CorrectionGain – use it to correct Gain\_Error in all GUI functions. The given numbers in the installed initialization file are from data sheet. Customer should verify them and make an individual gain correction in case of highest accuracy requirements. When correction parameters for gain is not defined then in the Init\_file, default value 1 taken for each channel.



- NIR\_Correction - Activate the Dynamic NIR compensation algorithm for Light Detection and SpectralMaskCompare – should be used for Light Detection but not for Reflection Mode. If not declared in the file default value ON is taken into consideration from the main window.
- Corr\_lx: conversion factor from Y (based on the calculated XYZ from corrected spectrum) to Y(lx). This factor affects only the output of the results for Y(lx) in Light detection. If not stated in the initialization file, default value is 683.
- Limit\_mask: will limit the wavelengths for diagram output and SpectralMaskCompare. Lower limit and upper limit of wavelength is considered. By default 381 is taken as lower limit and 781 is as upper limit.
- Limit\_Compare: in percent is to stop the spectral comparison in case of no SpectralMask was found with a difference smaller than the specified value compared with the actual measured Sensor results. If it is not mention in the file default value 25 is taken into consideration.
- Delta\_uv / LowerLimit\_u / UpperLimit\_u / UpperLimit\_v / minCCT / maxCCT: specifies the parameters, which are the conditions and limitations for CCT calculations in Light Detection. These values affect direct the CCT calculation. When not mentioned in the Init\_files default value taken:  
Deltauv = 0.2000, LowerUlimit = 0.1807, UpperUlimit = 0.3988, LowerVlimit = 0.3624,  
UpperVlimit = 0.5408, MinCCT = 2000, MaxCCT = 7000

**Figure 23:**  
**Example for INIT\_FILE.TXT**

```
//Light detection calibration matrix file
LightDetectionCalibrationMatrixFile = CM_L1_v1_0_0.csv

//Light detection mask file
LightDetectionMaskFile = Mask_L_v1_0_0.csv

//Reflection calibration matrix file
ReflectionCalibrationMatrixFile = CM_R_v1_0_0.csv

//Reflection mask file
ReflectionMaskFile = Mask_R_v1_0_0.csv// Specify the masks for spectral compare
from wavelength to wavelength

limit_mask= 380, 780

//Offset values decreases Basic values - reflection - daylight balance

//Offset=14.68701168,4.431111111,1.7441773,1.493510912,0.831476535,0.575966812,0.5
34881552,0.522365412

// Correction factor of Raw values
CorrectionFactor=1,1,1,1,1.1,1.2,1.1,1,1,1

//Correction factor for gain error 0.5x,1x,2x,4x,8x,16x,32x,64x,128x,256x,512x
CorrectionGain= 1.0,0.998,0.995,1.001,0.969,0.994,0.990,0.988,0.998,0.977,0.958
```

```
// Activate the Dynamic NIR compensation for Correction in VIS based on NIR filter
to correct overcrossing from NIR

NIR_Correction= ON

//correction factor to correct Y as Lux from CIE1931 Y

corr_lx = 683

//distance du'v' White Curve and Sensor

Delta_uv= 0.2000

//Lower Limit of u'

LowerLimit_u= 0.1807

//Lower Limit of v'

LowerLimit_v= 0.3988

//Upper Limit of u'

UpperLimit_u= 0.3624

//UpperLimit of v'

UpperLimit_v= 0.543

//Limit of Delta ab

Limit_Delta_ab= 1.0

// Minimum CCT

minCCT= 1000

// Maximum CCT

maxCCT= 8000

//Stop Spectral compare in case of error(%) is greater than

limit_Compare= 50
```

## 6.2.2 Calibration\_matrix\_file

The Calibration matrices are CSV files, which include correction and calibration data for application specific analyzes – ALS Light Detection and/or Reflection Mode:

- LEDCurrent = for calibration Reflection Mode, these values will be used for actual measurements
- WaitTime: It is defined in the GUI as waiting time between two measurements in ms and possible steps in 10ms increments. The function don't use the WTIME (LONG) functions of the AS7341 sensor chip.
- Offset = will reduce the ADC values (see also chapter 6.2.1)
- CorrectionFactor = Vector - will be used to balance the ADC values (see also chapter 6.2.1)
- Calibration matrix – will be used for calibration process by matrix multiplication

Note, here defined parameters replace the specified values from Init\_file (see chapter 6.2.2).

The Calibration matrices are part of the software setup and represent general solutions for demonstration AS7341 Evaluation Kits. They are based on the specified AS7341 filter definitions, components on the Evaluation Kits and on the existed conditions during calibration. They do not consider any real existing series deviations. Therefore, deviations in the Sensor results compared with spectrometers are possible<sup>7</sup>.

Figure 24 shows a typical correction matrix file – here created for XYZ target calibration with offset – correction, LED current settings and prepared correction vector.

The Calibration matrices can be based on:

- Simple balance algorithms by using the diagonal axe of CM[10:10]<sup>8</sup>;  
Rows = 10 x step sizes in nm; Columns = 10 filters of AS7341;
- Direct XYZ transformation by using a CM[3:8]  
Rows = X, Y, Z; Columns = 8 VIS filters of AS7341;
- Spectral Reconstruction by using a CM[621:10]  
Rows = 621 steps between 380nm and 1000nm; Columns = 10 filters of AS7341;

Depending on the matrix CM, the algorithm for calibration converts the BasicCounts (Sensor results F1...F8 + NIR/Clear) direct into corrected wavelength, XYZ coordinates or to an interpolated spectrum.

---

<sup>7</sup> Calibration, effort, and accuracy is always depending on the customer specific requirements. Use alternative calibration methods to increase accuracy in general. A device to target calibration, where Sensor and reference values are calculated to get the device specific Calibration matrix, will achieve the highest accuracy. A good compromise between effort and accuracy is use the general calculation matrix with a peak adjustment to a Golden device before.

<sup>8</sup> Identical by using 'Correction Factor=' in Init\_file-txt

**Figure 24:**  
**Correction Matrix File – Example for Target Calibration in Reflection Mode**

```
LEDCurrent=9

OffSet=0.002444;0.007075;0.003559;0.010774;0.012211;0.014322;0.010946;0.008662

CorrectionFactor=1;1;1;1;1;1;1;1;1;1

CorrectionWhiteBalance=1.01;1.02;0.98

Wavelength;410;440;470;510;550;583;620;670

X; -370.0273523;65.10744143;59.9656346; -4.263315183;9.48780527;21.90377015; -
12.46664374;53.56187123

Y; -383.1813248;53.2951052;83.53207318;8.87444833;16.70486069;15.1545028; -
19.7717037;52.90998953

Z; -480.154549;148.7284495;91.76277547; -0.04161231; -2.876569144;12.63075412; -
33.429114;67.51650793
```

### 6.2.3 Mask\_files

A spectrum in ALS Light Detection can be used to detect the type of luminary or to calculate CIE1931 xyz, u'v', Y (lux), CCT and CRI. In Reflection Mode, the result of comparison can be a recognized and/or identified color in the CIE1931 color space. In all applications, the aim is to identify the measured quantities in a set of defined masks. Such masks are defined in the files Mask\_x\_v1\_0\_0\_.csv.

These masks were predefined in a format, which must be also used in the calibration file (XYZ or spectrum). The dimensions of the mask file are depending on the corrected Sensor values and Calibration matrix CM. Changings in the CM makes necessary to adapt the mask file.

The process for SpectralMaskCompare is a simple algorithm based on 'sum of square deviations'. Each mask will be checked in its dimensions (wavelengths or tri-stimulus values) for deviations to the actual Sensor values. The recognized result is the mask with the smallest deviation given in the mask file OR the process will stop without recognition in case of all calculated deviations are greater than limit\_Compare from Init\_file. It is possible to create or adapt the mask file in the GUI. For more details, see chapter 6.9.

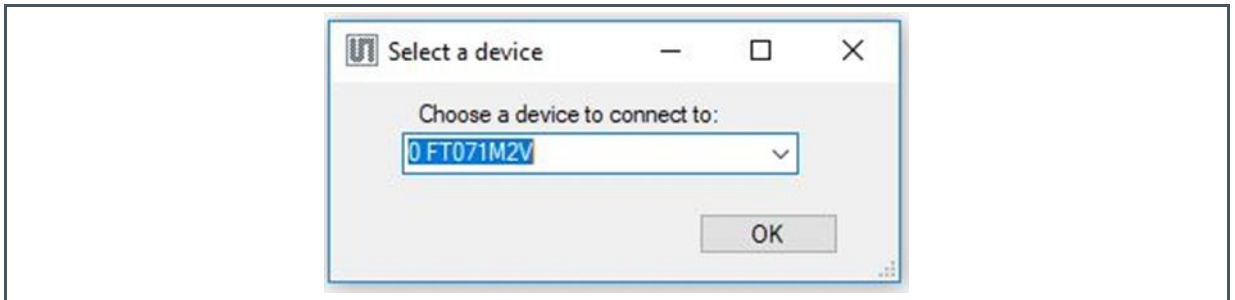
GUI uses the Calibration and Mask files from standard installation or selected by user with a pop up selecting window (exclude EEPROM versions like Pen – see chapter 8.1).

User can teach or add also spectral masks in case of selection ALS or Reflection Mode. The new spectral mask data are saved on to the previously selected mask .csv file.

## 6.3 AS7341 EVM Graphical User Interface

Connect the AS7341 hardware to the system via a FTDI cable and double-click the software icon to open the software GUI. If there are more than two FTDI cables connected to the computer, it would popup the window as below Figure 25.

**Figure 25:**  
**Window for FTDI Cable Selection if Multiple FTDI Cable Connected**



Please select the correct cable used for the Sensor Board and click 'OK'. If there is only one FTDI cable, the software will automatically select the connected cable.

When everything with the connection is fine, the bottom section in the GUI will display the positive status of FTDI connection, FTDI cable series number, Sensor auxiliary ID, revision and part number.

Check the part number includes any 0x-code in case of any issues. A code 0x zero will point to a not connected Sensor hardware. In case of an issue, check the USB driver installation and connections start the software again or use the scan function in menu File.

## 6.4 Tab File

The GUI will automatically open, when launching the software. If no device is connected, an error message will pop up.

The GUI starts showing a red indicator at the bottom section of the FTDI connection. Now connect a device, navigate to the file tab in top corner of the GUI and click 'Scan and Connect'. The GUI will relaunch with the device connected. Use the Disconnect button to terminate the connection. Exit Button to end the GUI application.

## 6.5 Hot Keys

The following hot keys are inserted in the GUI and are valid for all compatible hardware versions:

**Figure 26:**  
EEPROM Commands for EEPROM Based AS7341 Eval Kits and Demonstrators

Command	Description
Ctrl + A	Start detection logging
Ctrl + S	Save detection logging
Ctrl + M	Read a new calibration file
Ctrl + Z	Make a screen shoot from a diagram

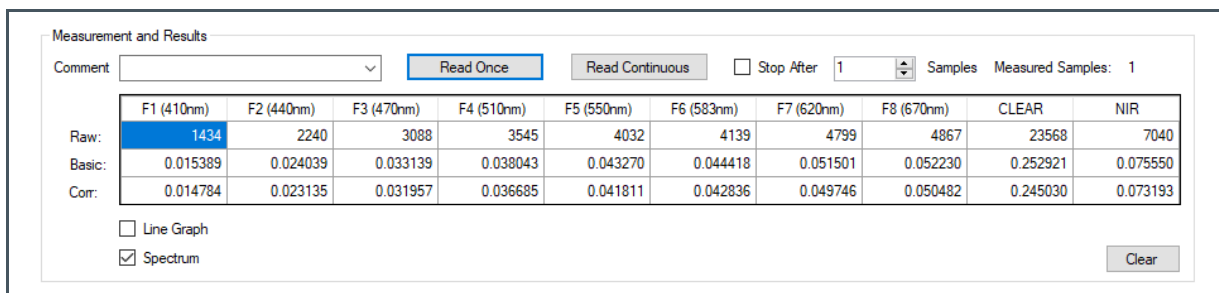
## 6.6 Sensor Board Test

To check the function of the EVAL KIT AS7341, start the measurement by pressing the Read Once button (see figure: 24). One measurement step will be executed using Easy mode (see section 6.6). It should show measured values in the table based on Sensor’s location to a luminary in front of the Sensor and its spectrum in another window. Change the mode to Expert mode, adjust Integration Time and AGAIN to change the digits based on application requirements.

More details about Sensor functions and the parameters are listed in Sensor’s data sheet or later in this manual.

Select one of the plot options Line Graph or Spectrum (see Figure 26) to see the results as graphical output. Table and diagrams show the RAW, Basic and Corrected Values (see section 6.7). Check the given results on reasonableness and logic. Normally both in Easy and Expert mode by default, the optimization for Gain and Integration time is switched-on. In case of Expert mode, optimization can be turn off, to increase the parameters for conversion in case of zero digits or decrease in case of saturation.

**Figure 27:**  
First Sensor Board Test – Output of First Results in the Measurement Window



An increasing/decreasing should change the counts and values in the table or diagrams. Look for the printed values and check them with the specified commands and parameters in the Init\_file to look the GUI works very well with all initialization files. Check always the stability of a test setup before the actual measurements begin. Set the target to its minimum and maximum to check the required

dynamic range. Make sure the parameter setup for Gain and Integration time is able to realize the full dynamic range. Verify any potential drifts like temperature effects.



---

### Information

For development reasons, various hardware platforms exist for the AS7341 EVK, for example with and without temperature sensors on the sensor board. Therefore, the GUI can show more results and details in the single windows than described here in this manual

---

---

## 6.7 Mode of Operation

The AS7342 GUI has two mode of operation – Easy and Expert Mode. By default, the Easy mode initiated (see figure 25). User can switch mode using radio button to Export mode (see figure 25).

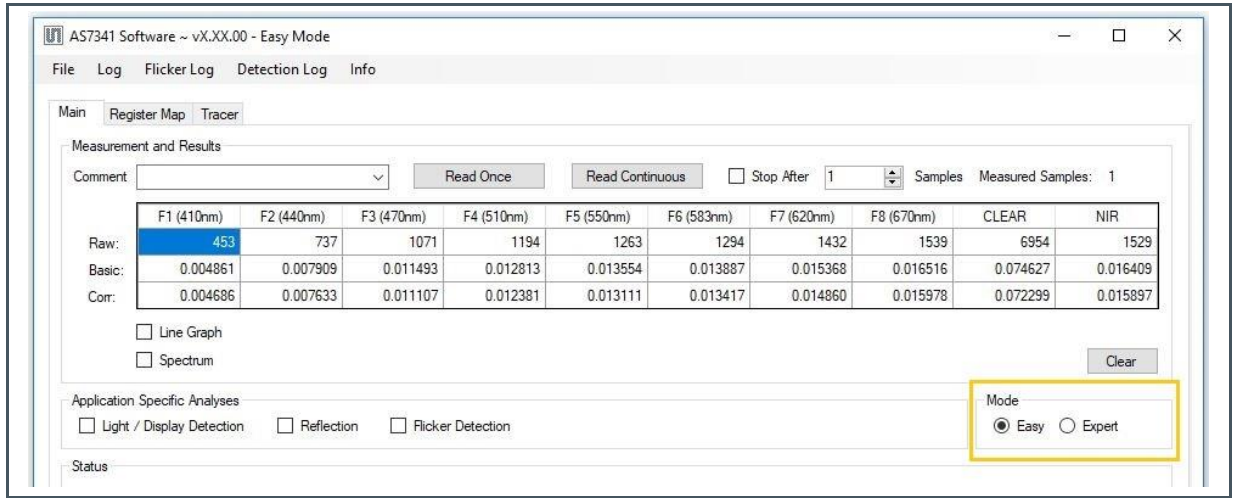
In Easy mode, most of the parameter setting are set automatically. The user has limited permission to make modifications of parameter settings in Easy mode. The parameters like Gain, Integration time, LED settings, SMUX configuration etc. are not possible to change in Easy mode. However, optimization of Gain and Integration time is active during the Easy mode measurements. In addition, Easy mode has limitation and restriction in Application specific Analyses windows.

Expert mode overcome all restriction in Easy mode. User could control all parameter setting in Expert mode. In Expert mode, the optimization of max AGAIN and Max TINT to control the gain and integration time is automatically turned off. Switch-on them manually to use it in Automatic mode. For operating the GUI in expert mode by default, user can use *AS7341 Demo Version.bat* batch file with the below command and execute the file in C:\Program Files (x86)\ams AG\AS7341 Demo or creating a shortcut icon of this batch file in desktop. In addition, software version can be edited with this batch file.

```
start "" ".\AS7341_Demo_Software.exe" -Expert -Version=X.XX.00
```



Figure 28:  
Main Window in Easy Mode



## 6.8 Main Window

The Main Window in Expert mode contains the user interface with control buttons, fields, selection boxes and output values for the identified device connected. The Main Window allows configuring the AS7341 device and initializes the default setting to the devices. It allows the user to modify and configure the Integration Time setting, Gain setting, LED setting, Auto zero, SMUX Configuration, Dynamic gain and some application specific AS7341 functions and demos.



### Information

The higher the counts, the better is the accuracy. Counts can be affected by changing Gain or TINT. Both parameters will have different effects like FSR, noise, linearity's, time, etc..

**Integration Time (TINT):** Integration Time is one parameter to affect the Sensor result = digital counts or digits. The Integration Time affects direct the saturation (FSR 16 bit =  $2^{16}$  is reached for first time at 182 ms =  $2.78 \mu s * 2^{16}$ ). The Integration Time is set using ATIME (0x81) and ASTEP (0xCA, 0xCB) registers. The Integration Time is displayed in millisecond. It is calculated using the equation -

$$tint = (ATIME + 1) \times (ASTE P + 1) \times 2.78 \mu s$$

The Integration Time parameter like the ATIME and ASTEP can be set by clicking the up or down arrow button. ATIME sets the number of integration steps from 0 to 255. Set the Integration Time per step in increments of  $2.78 \mu s$ . ASTEP sets the Integration Time from 1 to 65534 steps. The default configuration in GUI for these two registers are ASTEP = 0 and ATIME = 65534, which results in an Integration Time of 182ms. The Sensor specification does not allow both settings –ATIME and ASTEP – are set to '0'.

**Gain Setting (GAIN):** Gain is the second parameter to affect the Sensor result = digital counts. The Gain Control AGAIN allows the user access to the gain settings in the 0xAA Register (4:0 bits). The gain amplifies the 6 integrated ADCs signal to increase sensitivity by switching to a higher gain value. The gain options include 11 alternative gain stages between 0.5x and 512x. Select these options from the list box when the down arrow is pressed.

Enable Optimization to switch-on an algorithm of the GUI, which analyzes sensor output and parameter setup to find an optimal ADC parameter set for Gain and TINT by given maximal values. By default this is ON in case of Easy Mode and OFF in case of EXPERT MODE.

Optimization of gain is enabled by checking Max AGAIN and denoting the maximum gain value to be considered in the list box besides the checkbox. Similarly optimization of Integration time is enable by checking Max TINT and mentioning the maximum value to consider in up down list.

**WaitTime:** It is defined in the GUI as waiting time between two measurements in ms and possible steps in 10ms increments. The function don't use the WTIME (LONG) functions of the AS7341 sensor chip.

**LED Setting (LED Current):** If LEDs are mounted on the Sensor board for Reflection Mode; Enable for switch-on the LED and set LED currents. The current can be set using the up-down control. It has a

range from 4 mA to 258 mA<sup>9</sup>. Activate Flash Mode if the LED is only switched-on during the measurement process.

**Auto Zero:** Sets options and the frequency at which the device performs auto zero of the spectral engines to compensate for changes of the device temperature

**SMUX Configuration:** The device integrates a multiplexer (SMUX). With the SMUX, it is possible to map all available photo diodes to one of the six available light to frequency converter (ADC0 to ADC5). After power up of the device, the SMUX needs to be configured before a spectral measurement is started. Here the SMUX configured to three different modes where user can see the corresponding selected channels in the selected mode.

**Measurement Setting:** Select 'Read once' or 'Read Continuous' to measure step by step or in continuous mode (alternative with a specified number of steps) and/or to stop a continuous mode after n steps. The ADC results are printed after each measurement as numeric values presenting RAW or calculated BasicCounts or CorrectedValue.

RawCounts are represent the counts from the ADC depending on the used setup (SMUX Configuration, OffSet, Gain, Integration time, LED-current etc).

The Basic Counts are calculated on base of the RAW measurement values and the corresponding gain and Integration Time at that time to get Sensor results not depend on the parameter setup (gain, TINT).

$$\text{BasicCounts} = (\text{RawCounts} - \text{Offset}) / (\text{gain} * \text{tint\_ms})$$

Corrected counts are the results of calculations based on specified parameters in init\_list, e.g. 'Gain\_Correction' or 'CorrectionFactor'.

$$\text{CorrCounts} = \text{BasicCounts} * \text{Gain\_Correction} * \text{Correction\_Factor}$$

Select Line Graph or Spectrum if the sensor results as RAW, Basic or Corrected Counts should be presented as diagrams. The diagram windows include some function to adapt the graphical output in wavelength and data (see Figure 26). The diagrams can be saved on hard disk as bitmap file or any other format by selection the key combination Ctrl + Z.

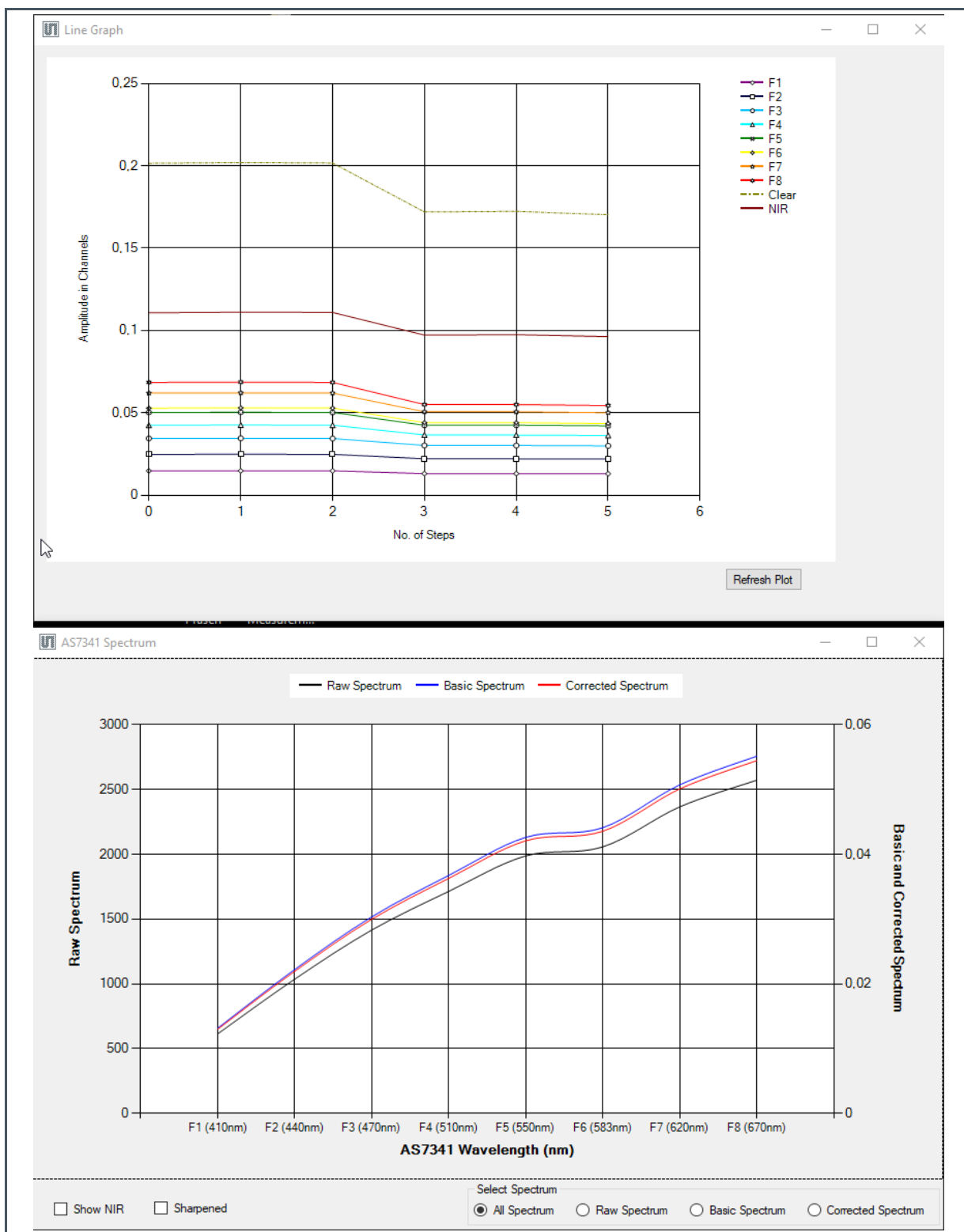
**Corrections:** Offset in main window can used to enable/disable the offset correction (see chapter 6.2.1) or Correction Vector can used to enable/disable the correction vector (see chapter 6.2.1). NIR COMPENSATION can be used to enable or disable the NIR compensation correction.

STATUS is a user interface and shows the GUI messages and/or failure reports.

---

<sup>9</sup> LED current and light intensity and/or maximal driver current is depending on the used LEDs and connected power supply. Check the LED data sheet before using this LED setting. A too high LED current can destroy LEDs.

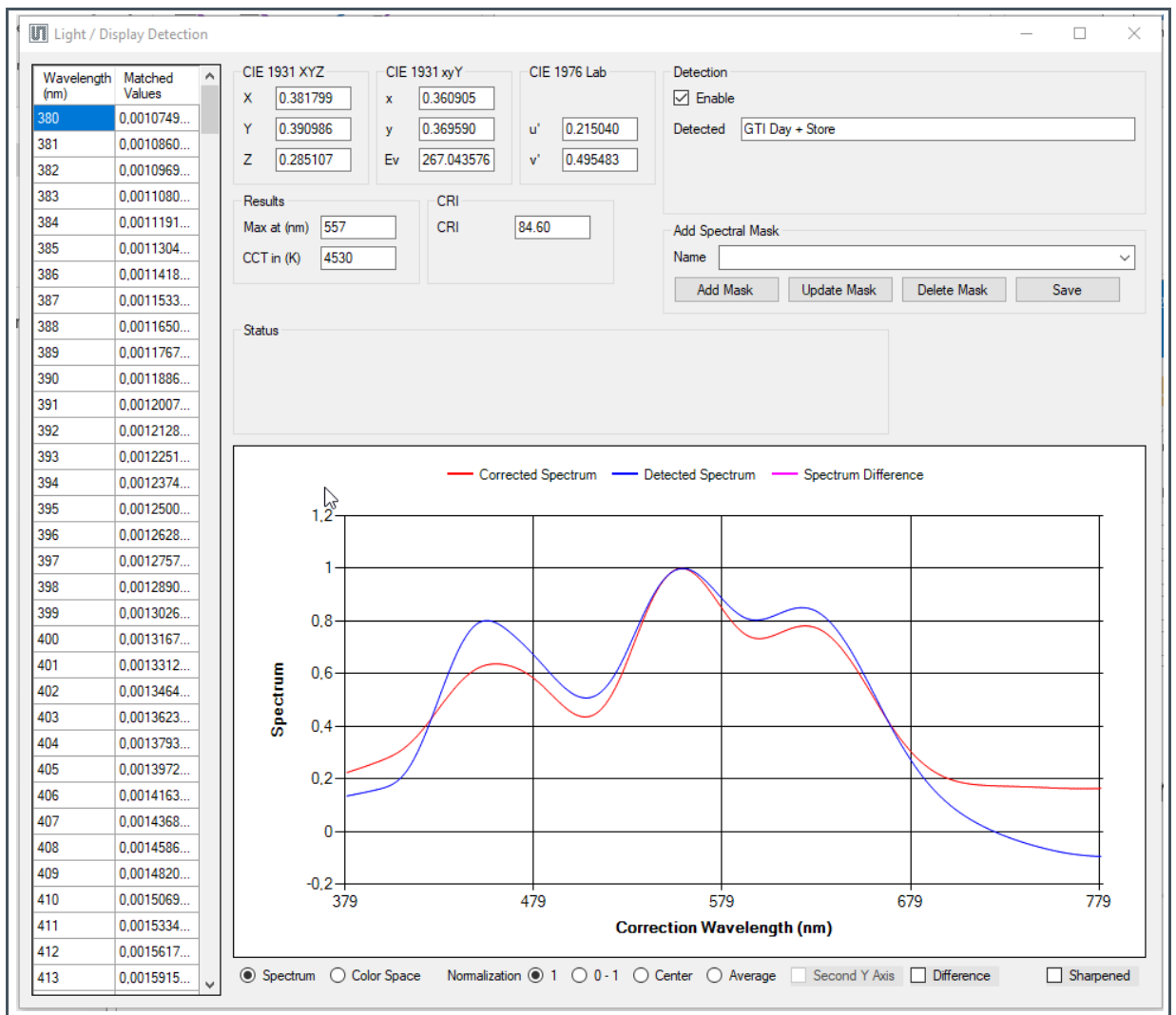
**Figure 29:**  
Sensor Results in Line Diagram and as Spectrum



## 6.9 ALS Light Detection

ALS (Ambient Light Sensing) Light Detection identifies type of light, max (peak), CCT, lx (Ev illumination intensity), CRI, and other spectral and color results based on a reconstructed spectrum of Sensor results. Checking the check box in main window and pressing “Read Once” will generate an open browser window to select the Calibration files. After selecting the respective calibration files, the function opens a new pop-up window and shows the results as vector, graphics (spectrum as list or diagram or xy-oriented color point in CIE1931 color space), calculated CIE1931 results, and the detected light source from the SpectralMaskCompare if this function is enabled.

**Figure 30:**  
Pop-Up Window Light Detection by Spectral Light Comparison



These functions can be used exactly only with a calibrated Sensor for Light Detection (see chapter 5) where the calibration matrix has been specially adapted to this application. Otherwise, results may be inexact until irrational and illogical.

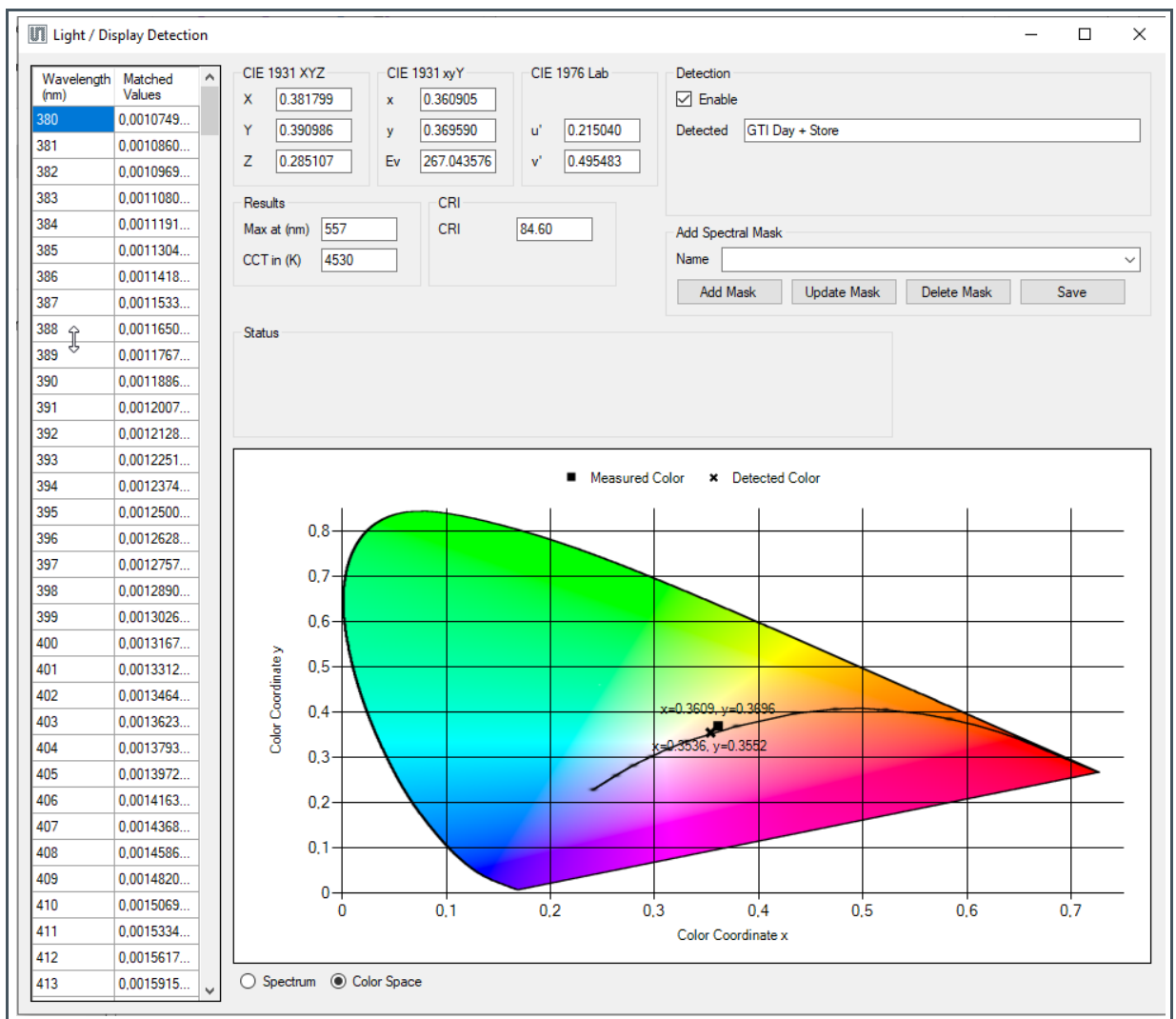
After opening the Light Detection, please start at minimum one measurement to activate and actualize all data and results in Light Detection.

The left side of the pop-up window shows the sensor results as matrix between 380nm and 1000nm with wavelength and reconstructed Sensor results. Data from this matrix can be copied direct to another window tools by copy/paste commands.

On the top of the pop-up windows are the results of all CIE1931 calculations as Tristimulus values, xy coordinates, Y, u'v', CCT, Peak and CRI. All these results, calculated standard values and accuracy are depending on application, its conditions, deviations, and other effects. For more details, see chapter 6.2 or application notes for Sensor calibration. Figure 30 shows the results from sensor and its derived color and photometric quantities in numerical form and as spectral diagram. Figure 31 has the same result but presented graphical in CIE1931 color space.

All diagrams can be saved on hard disk as bitmap file by selection the key combination Ctrl + Z.

**Figure 31:**  
Diagram CIE1931 Color Space and Printed Results for Light Detection



If Light Detection is enabled then the GUI find out the nearest spectrum as masks, which is similar to the measured light, and its reconstructed spectrum. The comparison works based on normalization procedures. The method of normalization is selectable (1, 0-1, Center and Average) and can influence the results of the SpectralMaskCompare.

1-/0-Normalization is recommend for width peak/food point oriented light sources. Centroid or average should be used for light sources, which includes small peaks.

In general, the measured and recognized results will have deviations. Non-overlapping curves indicate such deviations. The reasons are different conditions in the setup for measurements, spectral differences of light sources (measured and specified), and interferences by mixed lightings, any tolerances, and drifts over time or shifts over temperature, different field of views and others. The more similar the types and specimens of the light sources are between measurement and mask and the smaller the deviations of the measurement conditions, the better the result of the comparison will be.

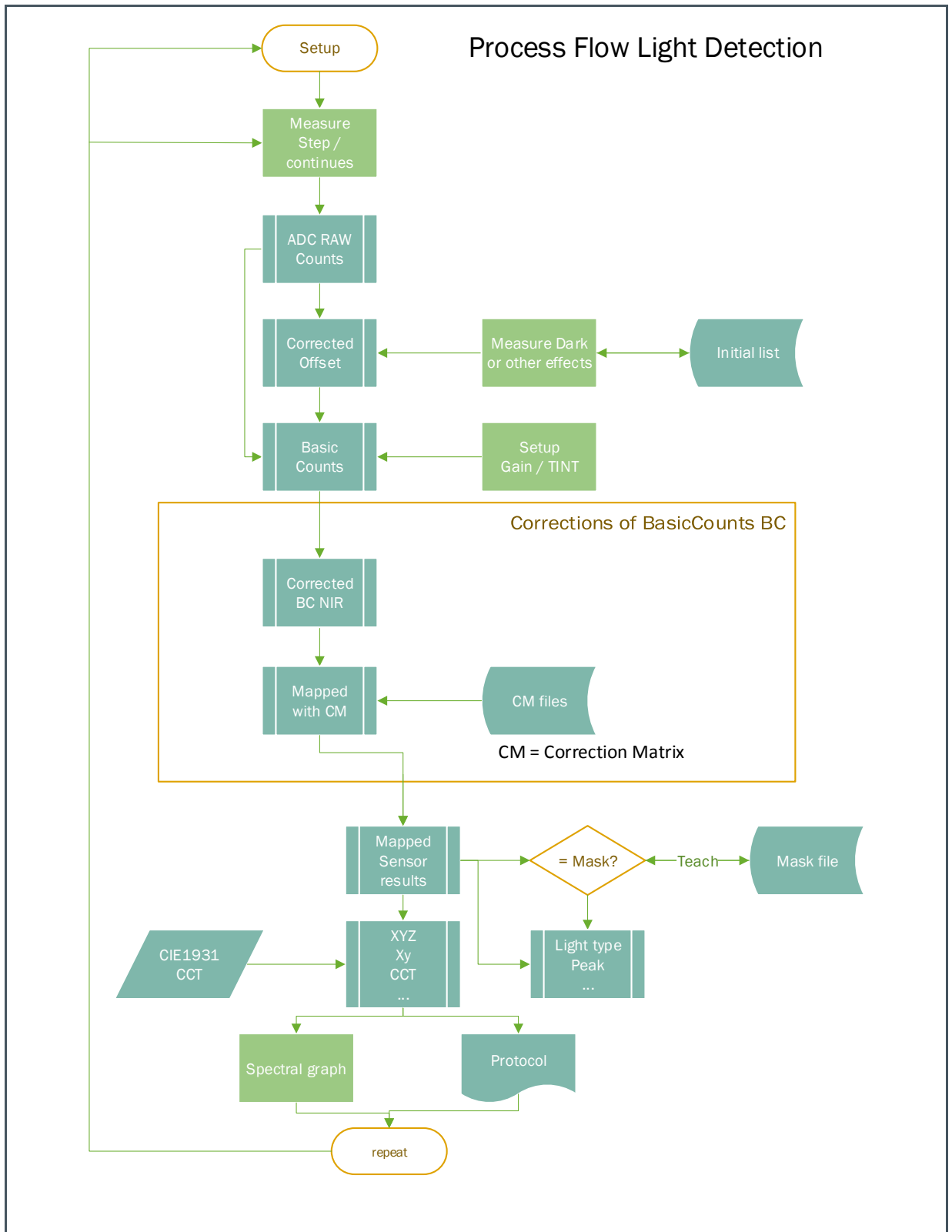
If the GUI will not identify a spectral mask within the given accuracy from the Init\_file then customer can specify a new spectral mask by pressing Add Mask. This will add the spectrum of the measured light source (not normalized) as new mask by a new defined name. This new mask will be active temporary and is active until end of the program. The mask will be only inserted to the mask file by using the Save button.

The GUI will not check any duplets in the mask file during all activities (read, add, save). Therefore, be careful and check names and masks before changing.

The function Light Detection will not recognize a light source in case of none existing mask file but works for the CIE1931 calculations.

Figure 32 shows the process for Light Detection from ADC Raw Counts up to the spectrum, the CIE1931 CCT until mask compare as well as the usage in the GUI.

Figure 32:  
Process Flow Light Detection

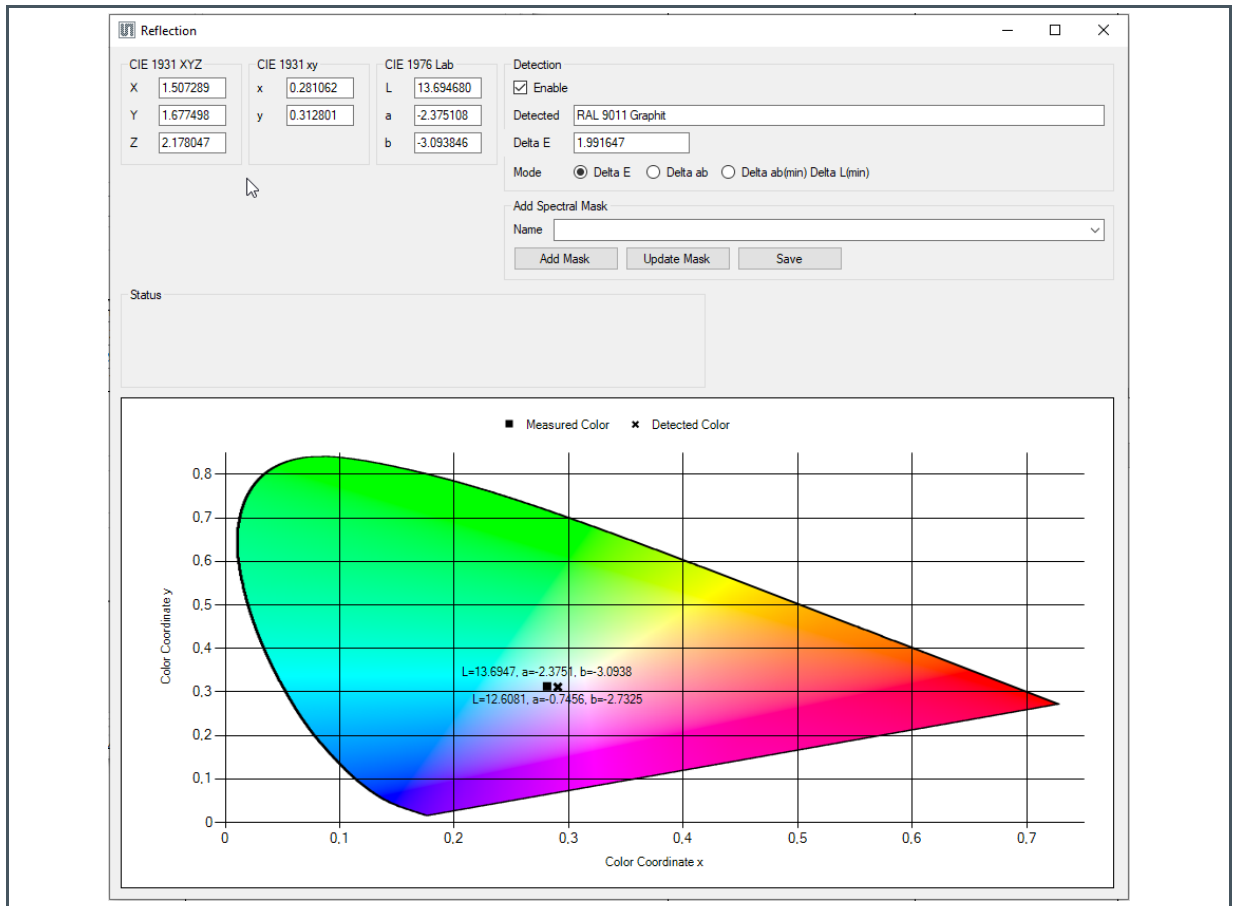




## 6.10 Reflection Mode

Reflection Mode is prepared to measure a reflected light based on AS7341 Evaluation Kit Reflection (see Figure 2). After setup all parameters to get optimized counts, the function can be opened by selection 'Reflection' in the section Application Specific Analyzes. A new Popup window (see figure 30) will open which shows the CIE1931 calculated results XYZ, xy, Lab as numeric result and in the xy-diagram. Similar to the light detection, after checking the checkbox for reflection select the Calibration files for reflection. By default, LED setting are enabled in flash mode with a default current of 110mA. This function uses only wavelength in VIS range (SMUX Configuration mode 2). Therefore, Tristimulus values XYZ are the base for correction matrix and mask file for color recognition.

**Figure 33:**  
**Pop-Up Window Color Recognition by Reflection Mode**



After opening the Reflection Mode, please start at minimum one measurement to activate and actualize all data and results in Reflection Mode.

In Detection, the GUI shows the recognized color from the mask file (point 1 of the xy-diagram) with the nearest distance (smallest Delta E or Delta ab or (Delta ab (min) plus Delta L(min))<sup>10</sup>) to the actual measured sensor value (point 2 in the xy-diagram).

Add Mask will insert a new mask in the mask file based. This new mask will be active temporary and is active until end of the program. The mask will be only inserted to the mask file by using the SAVE button. Pressed button Update Mask will replace a detected existing reference mask values with the current measured values.

## 6.11 Tab Log

The Log file is to store Sensor setup and data in a CSV data Excel format based on the Windows Setup<sup>11</sup>. Click Start Logging and/or Stop Logging to select the samples and close up the process by Save Log to store the CSV file and/or Clear Log to delete the sampled Log data. Tittle and content in log files are different for ALS, light and reflection measurements.

**Figure 34:**  
Example CSV Logfile Titles for Light Detection

Function	Comment	Sample num	Date	Time	SMUX config	AGAIN	Gain [x]	ATIME	ASTEP	TInt [ms]	WTIME_EN	WTIME	TWait [ms]	LED_EN	LED_DRIVE	LED Current [mA]	Measure Status
F1 (410nm)	F2 (440nm)	F3 (470nm)	F4 (510nm)	F5 (550nm)	F6 (583nm)	F7 (620nm)	F8 (670nm)	CLEAR	NIR								
Basic F1 (410nm)	Basic F2 (440nm)	Basic F3 (470nm)	Basic F4 (510nm)	Basic F5 (550nm)	Basic F6 (583nm)	Basic F7 (620nm)	Basic F8 (670nm)	Basic CLEAR	Basic NIR								
Corr F1 (410nm)	Corr F2 (440nm)	Corr F3 (470nm)	Corr F4 (510nm)	Corr F5 (550nm)	Corr F6 (583nm)	Corr F7 (620nm)	Corr F8 (670nm)	Corr CLEAR	Corr NIR								
CCT Status	CRI Status	X	Y	Z	x	y	Y(lx)	u'	v'	CCT	CRI	380 nm	381 nm	382 nm	383 nm	384 nm	385 nm
.. nm	.. nm	.. nm	.. nm	.. nm	.. nm	.. nm	.. nm	.. nm	.. nm	.. nm							
990 nm	991 nm	992 nm	993 nm	994 nm	995 nm	996 nm	997 nm	998 nm	999 nm	1000 nm							

## 6.12 Flicker Log

The Flicker Log functions are identical to the menu Log functions. The only difference is that they solely store the Hardware and FIFO Flicker data.

## 6.13 Detection Log

This is for light and reflection detection logging. After enabling either Light or Reflection detection, select the Start from Detection Log Tab or Ctrl + a in main window will ask to save a .csv file. After each measurement user can save the user light source by pressing save each detection or Ctrl + s.

<sup>10</sup> The algorithm searches for the mask with the lowest brightness difference in an extended 'ab' range. The radial extension of the "ab" range can be defined in the Init\_list.

<sup>11</sup> It can results issues in notations (point, semicolon, and coma) in combination with Wizards to convert text into numeric values and tables. Use a standard editor of windows to replace notations before processing with a wizard in case of such format issues.

A new pop up window asks to enter name of user light source and user can select whether the light is detected or not.

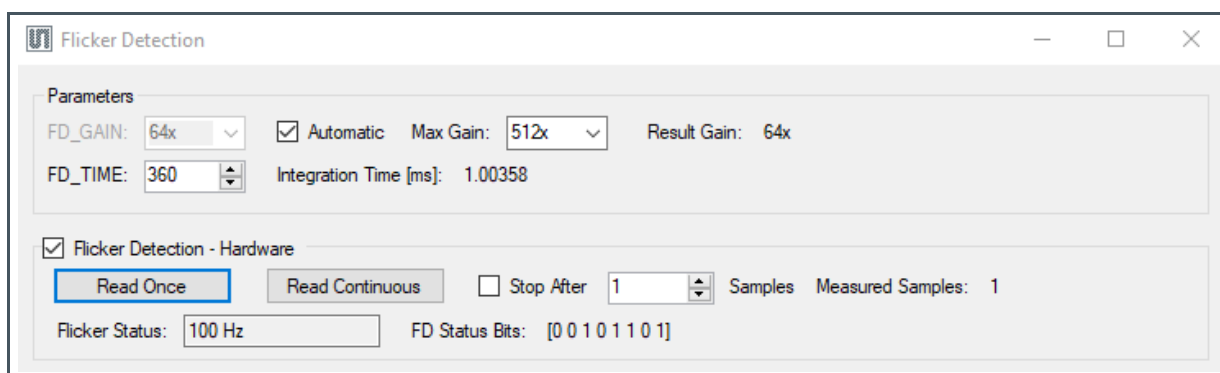
## 6.14 Flicker Detection

Light sources may be modulated at different frequencies as their power supply this cause the flicker of the light source. Usually, light sources such as fluorescent tubes or incandescent bulbs flicker at the frequencies proportional to their power supply. AC flicker caused by an alternating current power supply that has supplied power varies at a frequency of 50 or 60Hz.

The AS7341 device is integrated ambient light flicker detection on chip.

In the GUI, two types of flicker detection methods are implemented – Hardware and FIFO methods as shown in the Figure below. This window will pop up when clicking the Flicker detection in main window. This disables in the same time the ALS measurements in Main Window. Selecting the Flicker Detection - Hardware checkbox enables the hardware flicker detection and disables the FIFO method of flicker detection and vise versa.

**Figure 35:**  
**Flicker Detection – Hardware**



By default, the hardware flicker detection is selected. The hardware flicker detection detects the presence of 100 Hz and 120 Hz flickering. Read Once button displays the status of flicker in 'Flicker status'. The corresponding bit in FD status register exhibited as FD Status Bits. Clicking the Read Continuous button will keep updating the FD samples. If the Stop after checkbox selected and number of samples mentioned, then the mentioned samples are measured upon pressing Read Continuous. Samples taken shows the number of finished measurements.

On the other hand, the FIFO method of flicker detection is selected and Flicker detection default integration time, gain and threshold are configured. Use the parameters gain and integration time to adapt the measurement to application specific requirements by unchecking the Automatic checkbox.

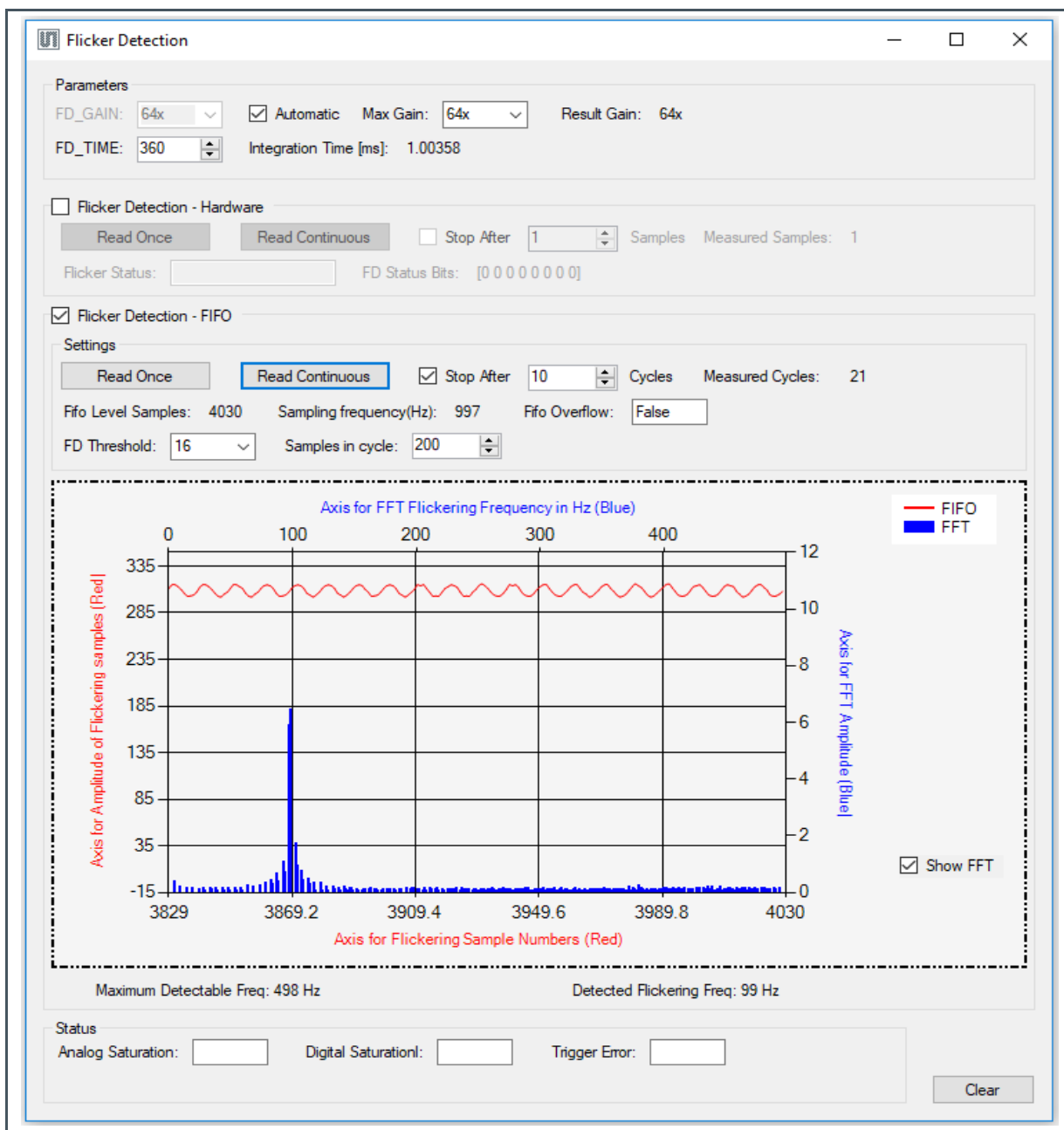
The FD Integration Time can be set by clicking the up and down arrow or by setting a value and pressing enter. The respective Integration Time is calculated based on the formula  $((Fd\_time + 1) * 2.78)$  and displayed in ms. The Gain can be picked by choosing one of values 0.5x, 1x, 2x, 4x, 8x,

16x, 32x, 64x, 128x, 256x, and 512x from the selection list. Similarly, FD Threshold can be selected as 1, 4, 8 and 16. FD Time and FD Gain defines the sampling rate, amplitude of counts and the maximum number of counts.

Click the Read Once button and Flicker detection graph is updated with current samples of FIFO data bytes. The output of the flicker channel in counts (raw data) is plotted against the corresponding sample the number in the primary Y-axis (left) and X-axis respectively (bottom) as the red colored graph. Clicking the Read Continuous button will keep updating the FD samples. If the Stop after checkbox selected and number of samples mentioned, then the mentioned samples are measured beginning with pressing 'Read Continuous'. The phrase Samples taken shows the number of finished measurements. In a single cycle, FIFO\_Lvl samples gives the maximum number of FIFO entries (each 2 Bytes) read out either before the overflow flag goes high or the maximum sample taken is less than 250. The sample levels added up back to back on consecutive measurement. Sampling Frequency is the reciprocal of the Flickering integration time. The maximum detectable frequency is half of the sampling frequency. Maximum detectable and detected flicker frequency are shown below the graph. FD Saturation flags show the status of the saturation flag bit like FIFO overflow, FD trigger, FDSat\_Analog and FDSat\_Digital. At lower FD\_TIME, the chance of getting FIFO overflow is more.

Fourier analysis converts a signal from its original domain (often used) to a representation in the frequency domain. Selecting the FFT checkbox computes the Fast Fourier Transformation and enumerates the discrete results graphically. The FFT plot represented in blue with the amplitude of FFT in secondary Y-axis (top) and Frequency represented in the secondary X-axis (right). The Clear button clears out the last measurement data and plot.

Figure 36:  
Flicker Detection - FIFO



## 6.15 Register Mapping

The Register Table window lists and allows writing all I<sup>2</sup>C registers values with the address, the name and information about authorization to read or write.

**Figure 37:**  
Register Mapping Table

Register Address	Name	b7	b6	b5	b4	b3	b2	b1	b0	Current Value
0x60	ASTATUS_SYND	0				0	0	0	0	0x00
0x61	CH0_DATA_SYND_L	0	0	0	0	0	0	0	0	0x00
0x62	CH0_DATA_SYND_H	0	0	0	0	0	0	0	0	0x00
0x63	ITIME_L	0	0	0	0	0	0	0	0	0x00
0x64	ITIME_M	0	0	0	0	0	0	0	0	0x00
0x65	ITIME_H	0	0	0	0	0	0	0	0	0x00
0x66	CH1_DATA_SYND_L	0	0	0	0	0	0	0	0	0x00
0x67	CH1_DATA_SYND_H	0	0	0	0	0	0	0	0	0x00
0x68	CH2_DATA_SYND_L	0	0	0	0	0	0	0	0	0x00
0x69	CH2_DATA_SYND_H	0	0	0	0	0	0	0	0	0x00
0x6a	CH3_DATA_SYND_L	0	0	0	0	0	0	0	0	0x00
0x6b	CH3_DATA_SYND_H	0	0	0	0	0	0	0	0	0x00
0x6c	CH4_DATA_SYND_L	0	0	0	0	0	0	0	0	0x00
0x6d	CH4_DATA_SYND_H	0	0	0	0	0	0	0	0	0x00
0x6e	CH5_DATA_SYND_L	0	0	0	0	0	0	0	0	0x00
0x6f	CH5_DATA_SYND_H	0	0	0	0	0	0	0	0	0x00
0x70	CONFIG					0	0	0	0	0x00
0x71	STAT							0	0	0x00
0x72	EDGE	0	0	0	0	0	0	0	0	0x00
0x73	GPIO							0	0	0x00
0x74	LED	0	0	0	0	0	0	1	0	0x04
0x80	ENABLE		0			0		1	1	0x03
0x81	ATIME	0	0	0	0	0	0	0	0	0x00
0x83	WTIME	0	0	0	0	0	0	0	0	0x00
0x84	SP_TH_L_LSB	0	0	0	0	0	0	0	0	0x00
0x85	SP_TH_L_MSB	0	0	0	0	0	0	0	0	0x00
0x86	SP_TH_H_LSB	0	0	0	0	0	0	0	0	0x00
0x87	SP_TH_H_MSB	0	0	0	0	0	0	0	0	0x00
0x90	AUXID	0	0	0	0	0	0	0	0	0x00
0x91	REVID	0	0	0	0	0	0	0	0	0x00

FTDI: Connected FTDI Serial Number: FT2HG01X Auxiliary ID: 0x00 Revision: 0x00 Part Number: 0x24

Click the Read values from Sensor button to update the whole table. It is recommend updating the table when coming to or leaving this Window. Write a value to a register by clicking the Current Value cell that corresponds to the register and typing a new value into the cell. The value will be saved only temporary in the window. Click the Write values to Sensor button to send the value into the sensor device. After the update, by clicking the Read values from Sensor button the value in the register is refreshed and confirmed. Use the Save register table to make an external copy of all register and values into a csv-file.



---

**Information**

The application synchronizes the changes on the Main Window and the Register Table Page automatically.

---

---

## 6.16 Tracer

The Tracer controls the software process by using pre-designed scripts in txt format. Such scripts can be loaded, saved, proceeded, or cleared. Log is a protocol function and cab be saved or cleared. Figure 41 shows the Window Tracer with an example code for a pre-designed script with log.

The following commands are implemented in the actual Tracer function:

Load Script: read the pre-designed text file or saved script

Save Script: save the current script

Run Script: execute the current script,

Clear Script: delete the text of the script text box,

Save Log: save the current log (right text box) file,

Clear Log: delete the text of the log text box.

Execute read, write commands and pauses by using the following syntax:

Read: 'R Register\_Address ' or 'r Register\_Address ' (e.g. 'R 80 ')

Write: 'W Register\_Address Register value ' or 'r Register\_Address Register value ' (e.g. 'R 80 00 ')

Pause: 'PAUSE Time\_ms ' (e.g. 'PAUSE 1000 ' -> A pause of 1000 ms)

#Comment: -> e.g. '# Reading register 0x80 '

**Figure 38:**  
**List of Tracer Command and Examples**

Tracer Command Syntax	Function Explanation	Usage Example
R < Register Addr >	To read out specified register	R 80
W < Register Addr ><Value>	To write mention value to specified register	W 80 01
Gain <Value>	To set gain < 0.5x, 1x, 2x, 4x, 8x, 16x, 32x, 64x, 128x, 256x, 512x >	Gain 256
Inttime <Atime><Astep>	To set integration time Atime <0 - 255> and Astep <1 - 65534>	Inttime 0 60000
Mode <Value>	To select the mode of the SMUX configuration < 0, 1, 2, 3, 4 >	Mode 2
Autogain <On/off>	To enable/disable optimized gain for detecting optimized gain when a saturation of Raw value is reached	Autogain on Autogain off
Ledon <Value>	To enable led with a current <0-127>	Ledon 50
Ledoff	To disable led and led current to default value	Ledoff
Openlog	Openlog to start logging	Openlog
Readsamples<>	Samples measured continuously for the value times	Readsamples 5
Readtime < time in seconds>	Read continuous measurement for given seconds	Readtime 10
Pause <value in ms>	To set a delay of ms	Pause 100
Savelog	Saves the measured samples to .csv file	Savelog
Clearlog	Clear the measured sample log	Clearlog
#	To comment out a line in tracer script	# r 60 # comment
<b>Only if it will be supported from the hardware.</b>		
Ledleft<On/Off>	Followed by ledon command. Command for switching left led on/off	Ledleft on Ledleft off
LedTop<On/Off>	Command for switching top led on/off	Ledtop on Ledtop off
LedBottom<On/Off>	Command for switching bottom led on/off	Ledbottom on Ledbottom off

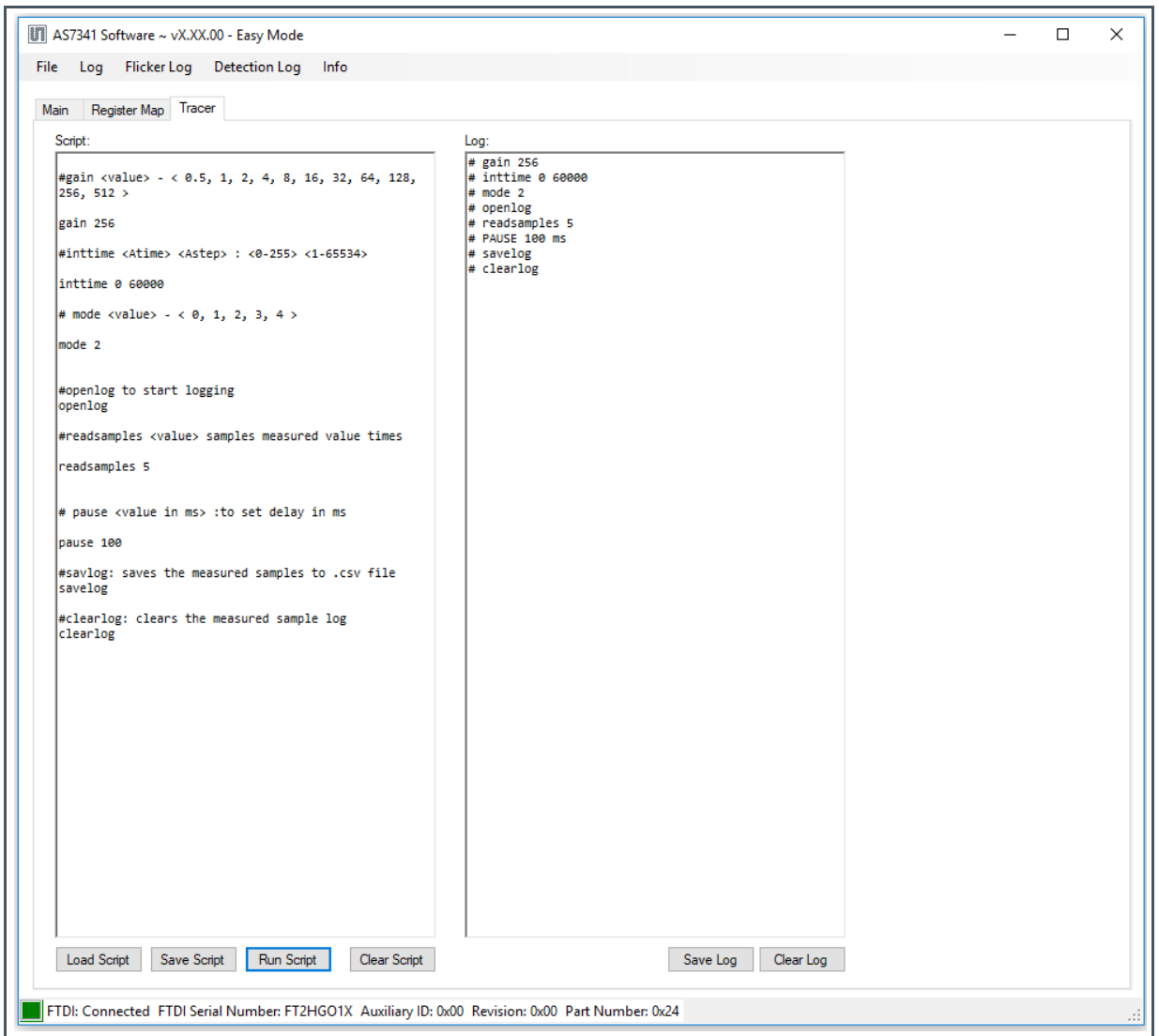




**Information**

Register address and register value are always specified as hexadecimal numbers without 0x. Comments can be placed directly behind a command or in a new line. Upper and lower case is neglected

**Figure 39:**  
Tracer with Example in Script and Log Window



# 7 Error Messages List

Figure 40:  
Error Message list

Error Message	Explanations
Error during connecting the device: An error occurred during connecting the FTDI device	Need to check the FTDI connection between the Sensor and the USB port and make sure that the FTDI cable or Sensor are not faulty
An error occurred during scanning for FTDI devices	Need to check the FTDI connection between the Sensor and the USB port and make sure that the FTDI cable or Sensor are not faulty
Analog Saturation: Intensity of ambient light has exceeded the max INT level for the spectral analog circuit	Indicates analog saturation, reduce the light intensity, Integration Time or gain to overcome the saturation
Digital Saturation: The maximum counter value has been reached	Indicates digital saturation, reduce the light intensity, Integration Time or gain to overcome the saturation. The maximum value range 65635 is reached
Digital and analog saturation has been reached	Indicates both digital and analog saturation reached, reduce the light intensity, Integration Time or gain to overcome the saturation
Status SP_TRIG Error: WTIME is too short for the selected TINT	Spectral Trigger error: Indicates that there is a timing error. WTIME is too short for the selected ATIME. Increase the WTIME to overcome this issue
Error during reading the register value	While reading the register value from the Sensor an error has been occurred
Error during setting Power On	Error occurred set the PON bit in the Enable register (0x80). Disconnect the device and try again
Error during enabling or disabling the spectral measurement	Error during enabling or disabling the spectral Enable bit in Enable register (0x80)
Error during writing the configuration	Error while writing the SMUX configuration
Error while starting the SMUX command	Error while starting the SMUX command
An error occurred during enabling or disabling external LED	Setting the LED current produces an error
Status Over Temperature Detected: Device temperature is too high.	Over temperature detected, the device temperature is too high
Cannot detect the optimal gain. Please change the settings	The optimal gain was out of range, need change the settings for an optimal gain

Error Message	Explanations
Unequal number of Correction factor in Init_file.txt	The entered number of correction factor should be cross checked in Init_file
Error reading Light Detection light source matrix file:<file location > Input string was not in a correct format	Crosscheck the corresponding file data. The data entered may be not in correct format or mismatching in the index
File Opened Error	Another process opens the log file to which the data is saved. Do not open the file between the measurement logging.
The Init_file was not found	Make sure that the Init_file is in directory or with correct name, where the software files are installed as mentioned in chapter 6.2
Error opening the Init_file	Make sure that the Init_file is closed while operating the GUI. The changes made to Init_file should be saved and the software should be reopen to see the effect of changes
Error reading the Init_file	When the parameter in Init_file are not named correctly, no value is provided for a parameter, commented out or not in correct format and dimension, the corresponding parameter is selected from the default values. The Status box will displays this information with a blue status message.
Error opening <filename><file location> because it is used by another process	File not found or Save the changes made to file and close the file. In order to see the effects of change, close and reopen the GUI. Do not open the file while the software is running
CCT Out of Range	During Light Detection, if the CCT calculated is out of range from the value defined in the Init_file.txt
Calculated Delta u'v' greater than given Delta u'v'	During Light Detection, if the Delta u'v' calculated is greater than given Delta u'v' in the Init_file.txt
u' and v' not in limit	During Light Detection, if the u' and v' calculated is not in the limit which is in Init_file.txt
An error occurred during writing the SMux configuration for FIFO Flicker detection	There was an error while configuring the SMUX for flicker detection
An error occurred during enabling or disabling Flicker Detection	Error occurred during the Fden bit in Enable register (0x80)
No samples were logged	Take measurements for the process or saving data to log file
An overflow detected. Data has been lost in continuous measurement	Warning - An overflow detected. Data has been lost in continuous measurement

Error Message	Explanations
Mask number is too big or Maximum number of mask entries reached	During writing the mask files to EEPROM the maximum limit of entry reached
Mask file contains wavelength that are not in calibration matrix file	Warning of not equal wavelength. Could use the mask compare even though they have different wavelength. But teach will overwrite old mask file with new wavelength entry
Header item: Wavelength or title was not found	In calibration file 'wavelength' is consider as the starting for calibration matrix, 'Title' is considered as starting for the reference file. If these are wrongly typed, the GUI generates an error
Unexpected line detected	When calibration or reference files does not have the expected number of values or error in the entry format. An empty matrix is considered in this case

## 8 Special Details for Other AS7341 Devices Using the AS7341 Eval Kit GUI

The GUI supports further special forms of the AS7341 sensor as Demo and Eval Kit. Unless otherwise stated, the details described here in this document also apply to these devices as far as possible.

Special and device application specific information is given in this chapter.

### 8.1 Additional Details When Using an AS7341 PEN with EEPROM

The sensor variant AS7341 PEN implements an EEPROM to save all Initialization, Calibration and Mask files direct on the sensor device.

Therefore, these files must be loaded onto the EEPROM before they used for first time. A change of the data on the EEPROM is direct not possible and only be realized by readout on disk, change on directory and rewrite to EEPROM.

In AS7341 PEN, the data files are selected from EEPROM. The maximum Spectral mask entry for light is 32 and maximum spectral entry for reflection is 500. Therefore, when writing the mask files from the directory to the EEPROM, the mask data present in the first 32 columns in light mask compare file and 500 columns in reflection mask file will be copied into EEPROM.

To teach or add more mask entries into PEN, limit the entry made during the writing process to EEPROM. For example, if the light mask file contains 10 entries of spectral mask data, after writing this file to EEPROM, the EEPROM still have possibility to add 22 spectral mask data in case of lighting. Similarly, in case of reflection, if 50 entries were in the spectral mask for reflection file, after loading this data to EEPROM, the EEPROM still have 450 entries space. Once the maximum number of entries are reached in the PEN error message is generated upon adding new entries and this will restrict new entry to EEPROM.

The EEPROM can be disabled to use the Initialization files from directory. Then, the GUI must be restarted in order to be able to use the EEPROM again. All necessary EEPROM commands are listed in Figure 41.

**Figure 41:**  
EEPROM Commands for EEPROM Based AS7341 Eval Kits and Demonstrators

Command	Description
Ctrl + E	Initialize or Re-Write EEPROM with the files from directory
Ctrl + W	Readout Initialization files from EEPROM to directory
Ctrl + D	Disable EEPROM, GUI uses data directly from directory

---

## 9 Additional Documents

---

The following list includes a selection of available documents with more technical details for Sensor and AS7341 Evaluation Kit. This list is not fixed and it is constantly changing. Ask us for new details.

[1] Sensor Data Sheet: AS7341\_DS000504\_NDA\_1-00

[2] Application Note Diffuser Details: 2018-08-15\_\_APN-opto-mechanics.pdf

[3] Application Note Flicker Measurement: AS7341\_AN000605.pdf

[4] Application Note Hello World ': Overview to Sensor connection by using alternative interfaces

[5] Application Note SMUX configuration: AS7341 SMUX configuration

[6] Schematic Evaluation Kit: a0013a\_CSS Evalboard AS7341\_Basic.pdf

[7] 3D model and data of adapters (diffuser, backside)

[8] Application Note for White Balancing General Calibrated Sensors: AS7341\_QG000139.pdf

# 10 Revision Information

Changes from previous version to current revision v5-00	Page
V1-00 Initial version for release	all
V2-00 Chapter 1.1 Aperture for diffuser	3
V2-00 Chapter 3.5 Software installation	14
V2-00 Tracer function	47
V2-00 Chapter 1.1 / 2 New Diffuser and adapter	3, 5
V3-00 Chapter 1.1, 1.2, 6.2, 6.2.2, 6.7, 6.9, 6.14	3-29
V4-00 Chapter 4, 5, 6, 8, 9	11-36, 47
V5-00 Chapter 3.3, 3.5	8-9, 12-13

- Page and figure numbers for the previous version may differ from page and figure numbers in the current revision.
- Correction of typographical errors is not explicitly mentioned.

# 11 Legal Information

## Copyrights & Disclaimer

Copyright ams AG, Tobelbader Strasse 30, 8141 Premstaetten, Austria-Europe. Trademarks Registered. All rights reserved. The material herein may not be reproduced, adapted, merged, translated, stored, or used without the prior written consent of the copyright owner.

Demo Kits, Evaluation Kits and Reference Designs are provided to recipient on an "as is" basis for demonstration and evaluation purposes only and are not considered to be finished end-products intended and fit for general consumer use, commercial applications and applications with special requirements such as but not limited to medical equipment or automotive applications. Demo Kits, Evaluation Kits and Reference Designs have not been tested for compliance with electromagnetic compatibility (EMC) standards and directives, unless otherwise specified. Demo Kits, Evaluation Kits and Reference Designs shall be used by qualified personnel only.

ams AG reserves the right to change functionality and price of Demo Kits, Evaluation Kits and Reference Designs at any time and without notice.

Any express or implied warranties, including, but not limited to the implied warranties of merchantability and fitness for a particular purpose are disclaimed. Any claims and demands and any direct, indirect, incidental, special, exemplary or consequential damages arising from the inadequacy of the provided Demo Kits, Evaluation Kits and Reference Designs or incurred losses of any kind (e.g. loss of use, data or profits or business interruption however caused) as a consequence of their use are excluded.

ams AG shall not be liable to recipient or any third party for any damages, including but not limited to personal injury, property damage, loss of profits, loss of use, interruption of business or indirect, special, incidental or consequential damages, of any kind, in connection with or arising out of the furnishing, performance or use of the technical data herein. No obligation or liability to recipient or any third party shall arise or flow out of ams AG rendering of technical or other services.

## RoHS Compliant & ams Green Statement

**RoHS Compliant:** The term RoHS compliant means that ams AG products fully comply with current RoHS directives. Our semiconductor products do not contain any chemicals for all 6 substance categories, including the requirement that lead not exceed 0.1% by weight in homogeneous materials. Where designed to be soldered at high temperatures, RoHS compliant products are suitable for use in specified lead-free processes.

**ams Green (RoHS compliant and no Sb/Br):** ams Green defines that in addition to RoHS compliance, our products are free of Bromine (Br) and Antimony (Sb) based flame retardants (Br or Sb do not exceed 0.1% by weight in homogeneous material).

**Important Information:** The information provided in this statement represents ams AG knowledge and belief as of the date that it is provided. ams AG bases its knowledge and belief on information provided by third parties, and makes no representation or warranty as to the accuracy of such information. Efforts are underway to better integrate information from third parties. ams AG has taken and continues to take reasonable steps to provide representative and accurate information but may not have conducted destructive testing or chemical analysis on incoming materials and chemicals. ams AG and ams AG suppliers consider certain information to be proprietary, and thus CAS numbers and other limited information may not be available for release.

## Headquarters

ams AG  
Tobelbader Strasse 30  
8141 Premstaetten  
Austria, Europe  
Tel: +43 (0) 3136 500 0

Please visit our website at [www.ams.com](http://www.ams.com)

Buy our products or get free samples online at [www.ams.com/Products](http://www.ams.com/Products)

Technical Support is available at [www.ams.com/Technical-Support](http://www.ams.com/Technical-Support)

Provide feedback about this document at [www.ams.com/Document-Feedback](http://www.ams.com/Document-Feedback)

For sales offices, distributors and representatives go to [www.ams.com/Contact](http://www.ams.com/Contact)

For further information and requests, e-mail us at [ams\\_sales@ams.com](mailto:ams_sales@ams.com)