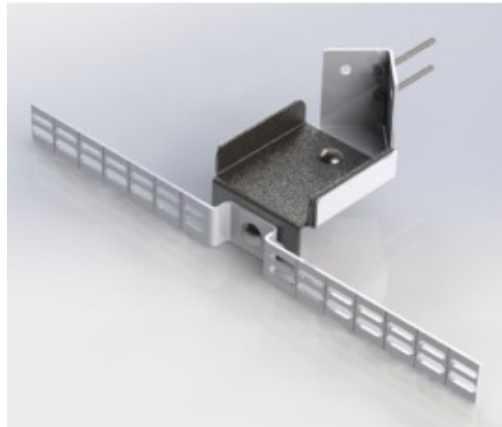


# CWB SERIES METAL CORNER WALL BRACKET



## Ordering Information

Part Number	Shipping Size (in)	Length (in)	Width (in)	Height (in)	Weight (Lb)
CWB-15101	14.00 x 3.00 x 3.00	5.00	3.00 to 12.00	2.20	1.00

*Priced, sold and packaged in quantities of one*

### Benefits and Features

- 14 Ga. Steel construction for robust application
- Scored mounting strip allows for creating needed width to align with product size.
- Can be used to mount all plastic BUD enclosures ranging in size from 3" to 14"
- Easily converts a standard box into a corner (90 degree) mounting box

### Applications

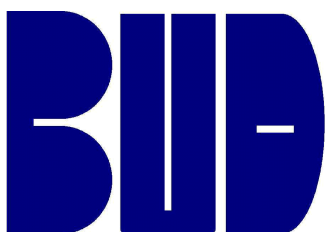
- Wi-Fi corner mount
- Security
- Lighting
- Factory Automation

### Competitive Advantages

- Easily converts a standard box into a corner mount without needing to create a new molded or formed box

### Availability

*July 2022*



Bud Industries, Inc.

4605 E. 355th Street  
Willoughby, Ohio 44094

[saleseast@budind.com](mailto:saleseast@budind.com)  
[saleswest@budind.com](mailto:saleswest@budind.com)

[www.budind.com](http://www.budind.com)

**BUD CWB Metal Bracket**