



# Test Workflow

All the Test Software You Need



A software bundle engineers use to:

- Perform quick measurement and analysis
- Develop production test stations
- Build web connected test systems
- Research new and emerging technology
- Test anything. Measure everything.

## What You Need across Your Workflow

Test Workflow is NI's recommended collection of software for engineers working on research, validation, and production test applications.



LabVIEW

Graphical  
Programming  
Environment



InstrumentStudio™

Device Set-Up  
and Configuration



G Web

Remote Access  
to Test



FlexLogger™

Fast Data  
Acquisition



DIAdem

Finding and  
Analyzing Data



TestStand

Scaling and  
Deploying Test

# Improve Test Performance with Test Workflow

Test Workflow has software for everything test, whether it's getting quick sensor data or building a high-performance test system for production. When you need it, Test Workflow is there to help.

## Test Workflow Standard

---



### Control All Your Instruments with One Tool

- Connect to and automate instruments (NI and over 5,000 non-NI instruments)
- Configure a custom, interactive real-time display for viewing test execution



### Create and Share Automated Reports

- Use drag-and-drop to create graphics and distribute reports to team in common formats
- Automate the data analysis and reporting process with scripts in VBS or Python



### Access and Control Your Test from Anywhere

- Monitor your test system remotely via web applications developed with Test Workflow
- Host your application on the NI Cloud or on your own server



### Acquire Data with No-Code Application Software

- Configure hardware channels for a variety of sensor, analog, and digital signals
- Set alarms, log data to disk, and view data on custom real-time displays

## Test Workflow Pro

---



### Deploy Royalty-Free Test Applications

- Create stand-alone applications for automating test on multiple systems
- Distribute as applications (.exe) or shared libraries (.dll)



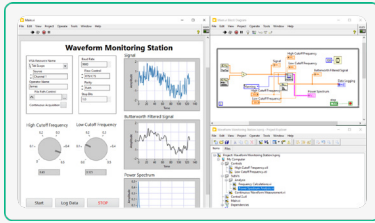
### Optimize Test for Manufacturing

- Create test sequences with code from LabVIEW, Python, C/C++, and .NET
- Leverage parallel testing to run multiple tests on one DUT or on multiple DUTs
- Track units and automatically store test results to your database



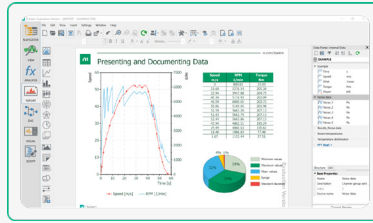
# Test Workflow Software

## LabVIEW



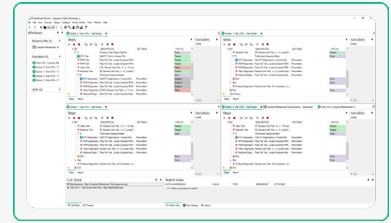
A graphical programming environment for developing automated test systems with rapid access to hardware and data insights.

## DIAdem



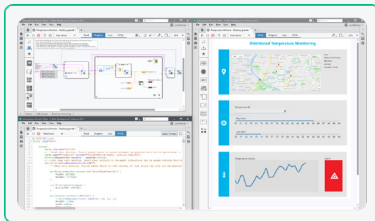
Data analytics software for measurement data search, inspection, analysis, and automated reporting.

## TestStand



Test executive software for developing test sequences for validation and production testers.

## G Web Development SW



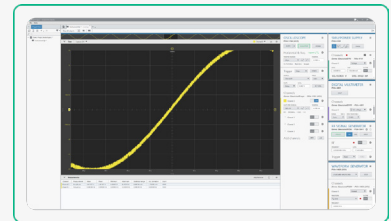
A graphical programming environment optimized for developing web applications for test systems.

## FlexLogger SW



No code software that accelerates measurement configuration and logging with NI DAQ Hardware.

## InstrumentStudio SW



Application software that simplifies set-up and configuration of NI PXI Hardware.

“The NI platform gave us the ability to significantly scale our production test throughput by 400 percent with an ROI of 185 percent while carefully maintaining the quality and performance standards that our military radios are known for.”

# Test Workflow Editions

Select the edition that best meets your needs.

## Test Workflow Standard

---

Recommended for applications that require hardware automation, data analysis, automated reporting, and remote access to test.



LabVIEW **Full**



DIADEM **Advanced**



InstrumentStudio  
Software



FlexLogger  
Software



G Web Development  
Software

## Test Workflow Pro

---

Recommended for applications that need test sequencing, more data visualization capabilities, and advanced analysis features.



LabVIEW **Professional**

Everything in **Full**, plus

- Application Builder
- Report Generation Toolkit
- Database Connectivity Toolkit



DIADEM **Professional**

Everything in **Advanced**, plus

- Advanced Visualization Displays
- Advanced Analysis Functions



TestStand

Contact your NI product expert to get help solving your test challenges.

US Corporate Headquarters  
11500 N Mopac Expwy  
Austin, TX 78759-3504  
T: 512 683 0100 F: 512 683 9300  
[info@ni.com](mailto:info@ni.com)  
[ni.com](http://ni.com)

