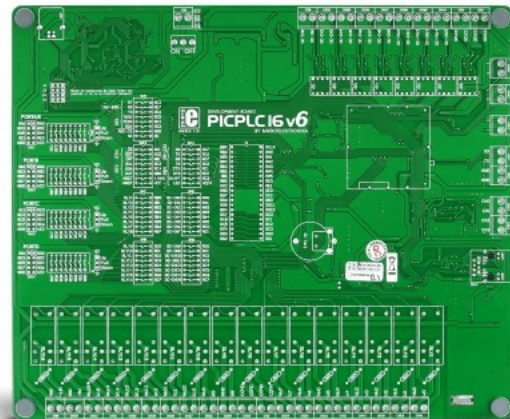


PICPLC16 v6



PID: MIKROE-465

PLC system used to develop industrial, home and office control devices. The system features GSM/GPRS communication, 16 relays, 16 optocoupled inputs, RS485, RS232, serial Ethernet, etc. PICPLC16 v6 is a PLC system with 16 opto-inputs and 16 relays (for currents up to 16A). With it, you can develop PIC-based industrial, home or office automation devices the easy way—PICPLC16 has all the MikroElektronika features you're familiar with: onboard programmer and mikroICD debugger, clear silkscreen markings, and many onboard modules.

mikroICD™ on board - PICPLC16 has a built-in powerful mikroICD debugger for testing the executed program in real time at hardware level. Whether you are a beginner, or a well-trained professional, this remarkable feature is an irreplaceable advantage.

Mikroe produces entire development toolchains for all major microcontroller architectures.

Committed to excellency, we are dedicated to helping engineers bring the project development up to speed and achieve outstanding results.



ISO 27001: 2013 certification of informational security management system.
 ISO 14001: 2015 certification of environmental management system.
 OHSAS 18001: 2008 certification of occupational health and safety management system.



ISO 9001: 2015 certification of quality management system (QMS).

Specifications

Type	6th Generation,PLC
Architecture	PIC (8-bit)
Programming	USB
Silicon Vendor	Microchip
MCU Socket	DIP & SMD
Supply Voltage	External
Category	6th Generation

Downloads

[mikroICD User Manual](#)

[PICPLC16 v6 User Manual](#)

[PICPLC16 v6 Schematic](#)

[PICPLC16 v6 Examples](#)

[mikroProg Suite for PIC](#)

[Drivers for mikroProg Suite](#)

[mikroProg Suite for PIC User Manual](#)

Mikroe produces entire development toolchains for all major microcontroller architectures.

Committed to excellency, we are dedicated to helping engineers bring the project development up to speed and achieve outstanding results.



ISO 27001: 2013 certification of informational security management system.
 ISO 14001: 2015 certification of environmental management system.
 OHSAS 18001: 2008 certification of occupational health and safety management system.



ISO 9001: 2015 certification of quality management system (QMS).