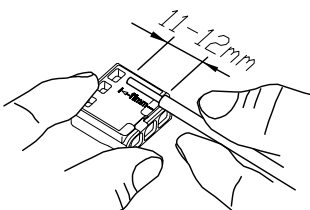




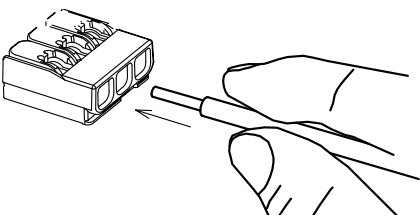
## Models L2, L3 & L5

- Do not exceed the rating of these connectors
- Turn OFF power before removing or installing connectors
- Wiring must comply with all applicable electrical regulations
- COPPER TO COPPER ONLY. Do not use on aluminium wire.
- Incorrect use of these connectors can cause electrical fires, personal injury or death
- Use only one conductor per port
- Strip wires back 9 – 10mm (52, 53 & 55) / 11-12mm (L2, L3 & L5)
- For solid and rigid stranded wire, grip wire firmly and insert conductor into open port (lever does not need to be open)
- For flexible stranded wire (>7 strands) lift lever and insert conductor into open port. Close lever
- Verify conductors are fully inserted to the back of the connector.
- To remove a wire, lift lever and pull out wire

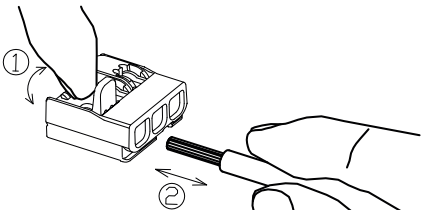
### Strip Length



### Insertion



### Removal



Specifications		Model L2 2-Port	Model L3 3-Port	Model L5 5-Port
Rating		32 Amp / 450V / 85°		
Depth		18.6 mm		
Width		13.3 mm	18.9 mm	30.4 mm
Height		8.8 mm		
Wire Combination Range	Solid and Rigid Stranded	0.2mm <sup>2</sup> - 4.0mm <sup>2</sup>		
	Flexible Wires	0.14mm <sup>2</sup> - 4.0mm <sup>2</sup>		



# Installation Instructions - Push-In Wire Connectors



## Model 33

- Do not exceed the rating of these connectors.
- Turn OFF power before removing or installing connectors.
- Wiring must comply with all applicable electrical regulations.
- COPPER TO COPPER ONLY. Do not use on aluminium wire.
- Incorrect use of these connectors can cause electrical fires, personal injury or death.
- These connectors are suitable for solid and semi-rigid (<7 strands) conductors.

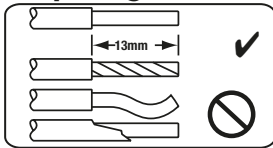
They are not suitable or rated for use with flexible cable with >7 strands.

- Strip wires back 13mm.
- Grip wire firmly and push conductor into open port.
- Use only one conductor per port.
- Connectors are reusable on solid wires of the same wire gauge or larger.

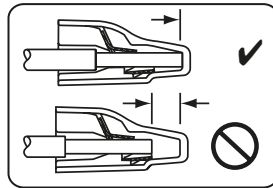
If reusing connectors, cut and re-strip conductors.

- In order to remove a wire, pull and twist the wire back and forth.
- DO NOT RE-USE connector on stranded wire.

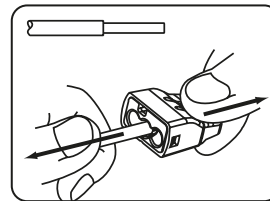
### Strip Length



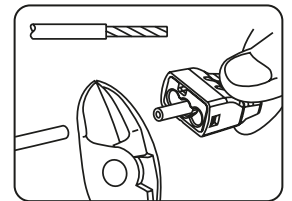
### Insertion



### Removal



### Removal



Specifications		Model 33 Orange 3-Port		
Rating		32 Amp / 450V / 105°C maximum		
Depth		19.81 mm		
Width		13.21 mm	17.53 mm	20.83 mm
Height		9.65 mm		
Wire Combination Range	Solid wire	0.75mm <sup>2</sup> to 4.0mm <sup>2</sup>		
	Stranded wire*	1.5mm <sup>2</sup> to 2.5mm <sup>2</sup>		

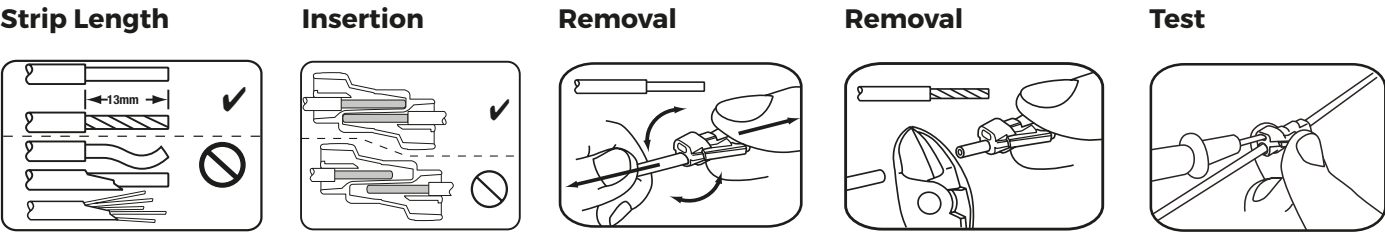
\* Stranded wire is limited to ≤ 7 strand



Model 42



- Do not exceed the rating of these connectors.
- Turn OFF power before removing or installing connectors.
- Wiring must comply with all applicable electrical regulations.
- COPPER TO COPPER ONLY. Do not use on aluminium wire.
- Incorrect use of these connectors can cause electrical fires, personal injury or death.
- These connectors are suitable for solid and semi-rigid (<7 strands) conductors. They are not suitable or rated for use with flexible cable with >7 strands.
- Strip wires back 13mm.
- Grip wire firmly and push conductor into open port.
- Use only one conductor per port.
- Connectors are reusable on solid wires of the same wire gauge or larger. If reusing connectors, cut and re-strip conductors
- In order to remove a wire, pull and twist the wire back and forth.
- DO NOT RE-USE connector on stranded wire.



Model	Colour	Rating	Wire Range
42	Orange	32A / 450V /105°C	Solid: 0.5mm <sup>2</sup> - 4.0mm <sup>2</sup> Stranded*: 1.0mm <sup>2</sup> - 2.5mm <sup>2</sup>

\* Stranded wire is limited to ≤ 7 strands