



# 2.5 Gigabit PCIe Network Adapter

---



TX201



Blazing-Fast 2.5 Gbps Networking



Multi-Speed Compatibility



Low-Profile Bracket

# Highlights

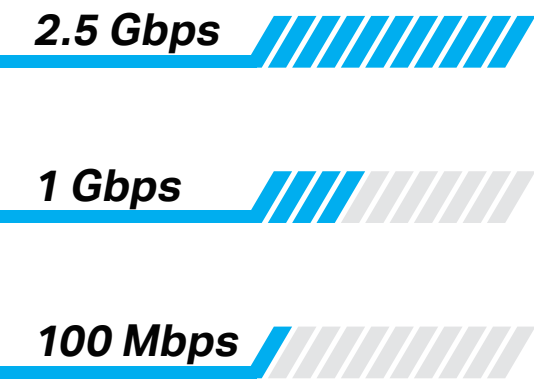
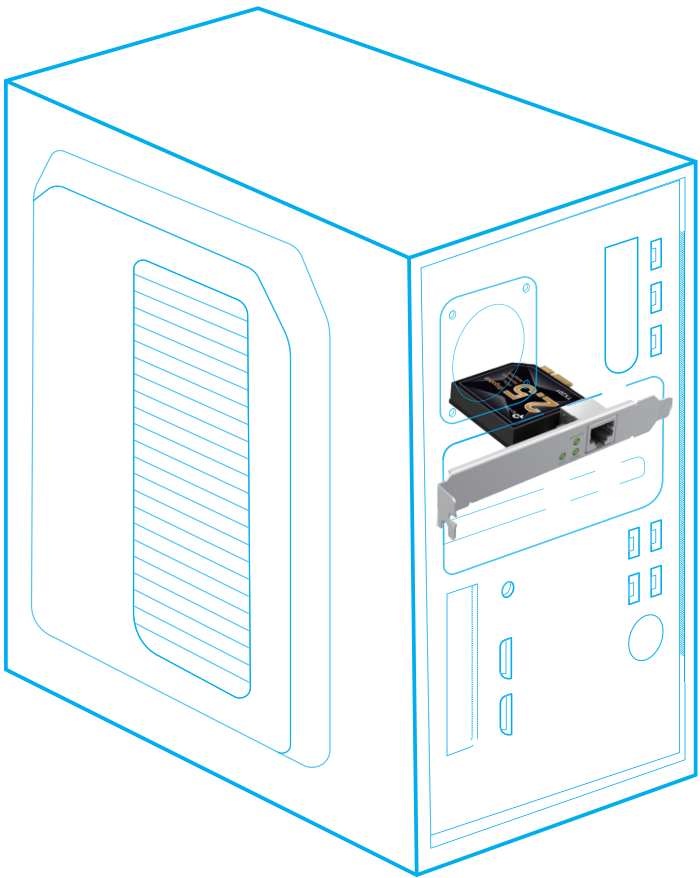
## Incredible 2.5G Networking

2.5 Gigabit Ethernet reaches blazing-fast data rates up to 2.5 billion bits per second—2.5× faster than standard Gigabit Ethernet. For bandwidth-intensive tasks, whether local data transfer or Internet access, the TX201 is up to the task.<sup>†</sup>



## Versatile Compatibility

2.5G Base-T is backwards compatible with multiple data rates, including 2.5 Gbps, 1 Gbps, 100 Mbps and 10 Mbps Base-T connectivity. The 2.5G Ethernet port automatically negotiates between higher and lower speed connections, allowing you to upgrade to 2.5G networking smoothly.

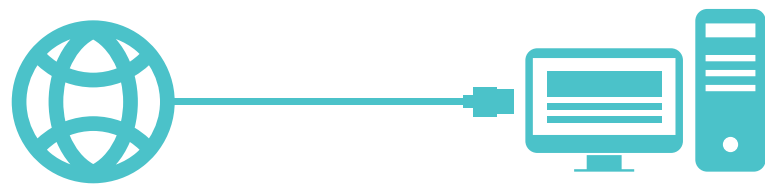


Multi-Speed Compatibility

# Highlights

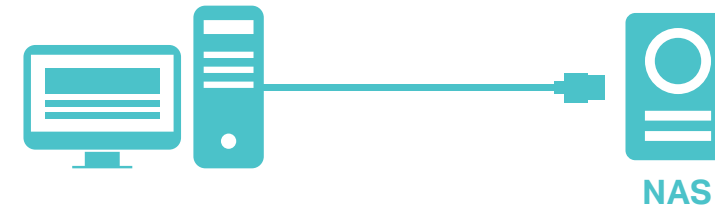
## 2.5 Gbps Internet Access

Make Full Use of Your High-Speed Internet Access



## 2.5 Gbps NAS Connection

Lightning-Fast Local Data Transmissions



### Lower Wiring Costs

You don't need a costly fiber cable network to reach speeds up to 2.5 Gbps. A low-cost CAT5e Ethernet cable will do the trick.



### Low-Profile and Full-Height Brackets

In addition to the standard bracket, a low-profile bracket is provided for mini tower computer cases. Customized options give you the flexibility to find a bracket that perfectly fits your board design.



### Comprehensive System Support

Compatible with Windows 11/10/8.1/8/7, Windows Servers 2022/2019/2016/2012 R2, and Linux to meet your diverse operating system needs.<sup>‡</sup>

# Specifications

## Hardware Features

- Standards: IEEE 802.3, IEEE 802.3u, IEEE 802.3ab, IEEE 802.3bz, IEEE 802.3x
- Network Media: 2.5GBASE-T/1000BASE-T/100BASE-TX
- Data Rates:  
10 Mbps, 100 Mbps, 1 Gbps, 2.5 Gbps for Half-Duplex mode,  
20 Mbps, 200 Mbps, 2 Gbps, 5 Gbps for Full-Duplex mode
- Flow Control: 802.3x
- Interface: 1× PCI Express 2.1 x 1, 1× RJ45 Gigabit/Megabit Port
- LEDs: 2.5 Gbps, 1 Gbps, and 100/10 Mbps Link/Act
- Dimensions: 120.8 × 78.1 × 21.5 mm (4.8 × 3.1 × 0.8 in)

## Others

- Package Contents  
2.5 Gigabit PCIe Network Adapter (TX201)  
Standard/Low-Profile Brackets  
Quick Installation Guide  
Resource CD
- Certification  
FCC, CE, RoHS
- System Requirements  
Windows 11/10/8.1/8/7, Windows Servers 2022/2019/2016  
/2012 R2/2012/2008 R2, Linux<sup>‡</sup>
- Environment  
Operating Temperature: 0°C~40°C (32°F ~104°F)  
Operating Humidity: 10%~90% non-condensing  
Storage Humidity: 5%~90% non-condensing



For more information, please visit  
<https://www.tp-link.com/products/details/?model=TX201>  
or scan the QR code left

Attention: This device may only be used indoors in all EU member states and EFTA countries.  
Specifications are subject to change without notice. TP-Link is a registered trademark of TP-Link Corporation Limited. Other brands and product names are trademarks or registered trademarks of their respective holders. Copyright ©2022 TP-Link Corporation Limited. All rights reserved.  
<sup>†</sup>Maximum wired data throughput rates are the physical rates derived from IEEE Standard 802.3 specifications. Actual wired data throughput is not guaranteed and will vary as a result of environmental factors, Ethernet cable class, and computer performance.  
<sup>‡</sup>To ensure compatibility, you may need to update the adapter's drivers after an OS update. You can check the full list of OS support in the download center at [tp-link.com/download-center](https://www.tp-link.com/download-center).