

---

# multicomp **PRO**



**Dual Function Iron Tip Cleaner**

**Model: MP-182**

---

## Specifications

- Adaptor input: AC 100-240V 50/60Hz
- Adaptor output: DC18V 0.5A
- DC outlet: 5.5\*2.5mm
- Power: 2W
- Solder removal diameter:  $\Phi$ 7mm
- Oxide removal diameter:  $\Phi$ 10mm
- Net weight: 260g
- Dimensions: 133\*83\*69mm

## Features

- With infrared sensor, the cleaner starts working automatically when the iron tip is inserted in and stops when the tip is taken out.
- Safe and environment friendly with the separate inside structure and fully sealed casing preventing tin waste from splashing around.
- Energy-saving with little power consumption.
- Works efficiently and cleans tips thoroughly.
- With dual cleaning function of solder removal and oxide removal.
- Can be used horizontally or at an angle.

## Attention

Please note the following safety notes to avoid malfunctions, damage or physical injury:

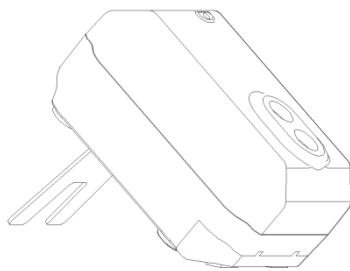
- This device should only be used with the included power supply.
- In order to achieve the cleaner's best performance, always clean the iron tip when it is hot.
- The cleaner is not a toy, keep it out of children's reach.
- Never put your fingers into the holes.
- Always unplug the cleaner before cleaning, changing its brushes, during breaks or when you have finished using it.
- Never use power adaptors other than the original one or an authorized replacement one by the manufacturer.
- If the cleaner fails, it must be repaired by a suitably qualified person to avoid hazards.
- Always clear out the solder waste in the receptacle regularly.
- This item is not intended for use by persons (including children) with reduced physical, sensory or mental capabilities, or lack of experience and knowledge, unless they have been given supervision or instruction concerning use of the item by a person responsible for their safety.
- CAUTION: Do not touch the metal part when it's in use as its temperature will be quite high and you may be burned.

---

## Operation

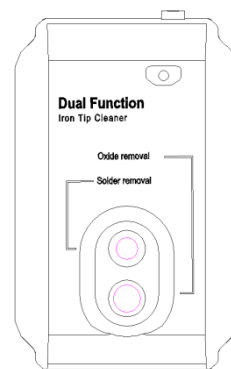
- Connect the mains adaptor to the cleaner's outlet and plug it in to a mains socket.
- Set the cleaner at an angle or horizontally. Insert the iron tip into the hole of solder removal or oxide removal and the cleaner will start working automatically within 2 seconds. Take out the tip and the cleaner will stop working. Repeat several times if necessary until the tip is completely clean.
- Disconnect from the mains power after your work is done.

## How to set its position.

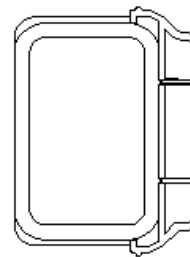
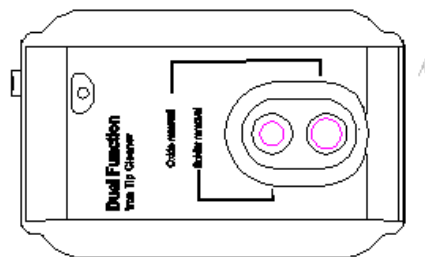


at an angle

horizontally



## How to get rid of solder waste.

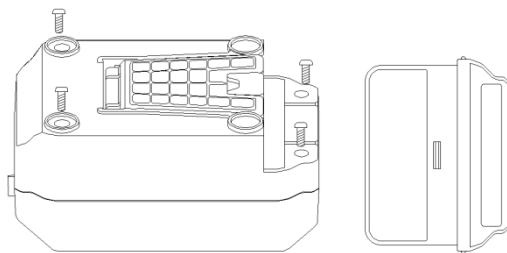


Pull out the receptacle and empty the solder waste.

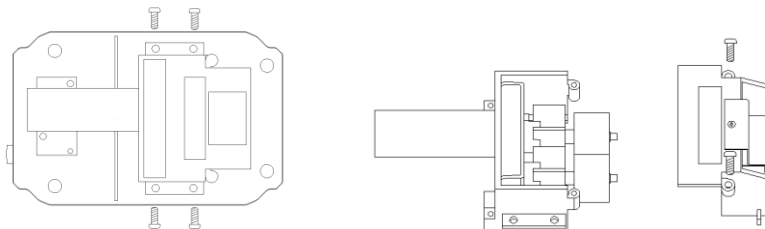
---

## How to change the brushes.

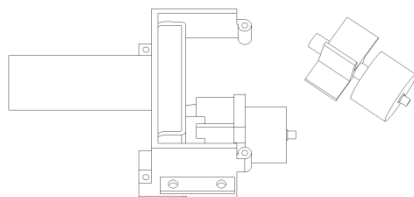
1. Pull out the receptacle and loosen the 4 screws on the bottom.



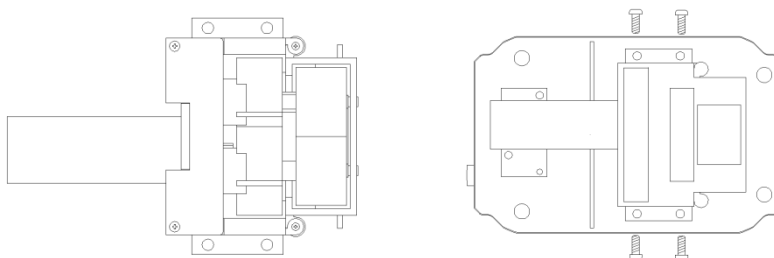
2. Open the casing and loosen the other 6 screws in the pictures below.



3. Open the cover, pull out the brushes and replace them with new ones.



4. Reassemble the rest parts.



### INFORMATION ON WASTE DISPOSAL FOR CONSUMERS OF ELECTRICAL & ELECTRONIC EQUIPMENT.

When this product has reached the end of its life it must be treated as Waste Electrical & Electronic Equipment (WEEE). Any WEEE marked products must not be mixed with general household waste, but kept separate for the treatment, recovery and recycling of the materials used. Waste batteries can be returned to any waste battery recycling point which are provided by most battery retailers. Contact your local authority for details of recycling schemes in your area.

Made in China.

PO Box 13362 Dublin 2  
LS12 2QQ