



## Product Change Notification / CENO-21UTEV408

---

**Date:**

27-Oct-2022

**Product Category:**

Crypto Authentication

**PCN Type:**

Manufacturing Change

**Notification Subject:**

CCB 5141 Final Notice: Qualification of MTAI as an additional final test site for selected ATECC108A-SSxxx-x, ATECC508A-SSxxx-x, ATECC608A-SSxxx-x, ATECC608B-SSxxx-x and ATSHA204A-SSxxx-x device families available in 8L SOIC (3.90mm) package.

**Affected CPNs:**

[CENO-21UTEV408\\_Affected\\_CPN\\_10272022.pdf](#)

[CENO-21UTEV408\\_Affected\\_CPN\\_10272022.csv](#)

**Notification Text:**

**PCN Status:**Final Notification

**PCN Type:**Manufacturing Change

**Microchip Parts Affected:**Please open one of the files found in the Affected CPNs section.  
Note: For your convenience Microchip includes identical files in two formats (.pdf and .xls)

**Description of Change:**Qualification of MTAI as an additional final test site for selected ATECC108A-SSxxx-x, ATECC508A-SSxxx-x, ATECC608A-SSxxx-x, ATECC608B-SSxxx-x and ATSHA204A-SSxxx-x device families available in 8L SOIC (3.90mm) package.

**Pre and Post Change Summary:**

	Pre Change	Post Change
--	------------	-------------

Final Test Site		ASE Advanced Semiconductor (Shanghai) Co., Ltd  (ASSH)	ASE Advanced Semiconductor (Shanghai) Co., Ltd  (ASSH)	Microchip Technology Thailand (HQ)  (MTAI)
Base Quantity Multiple  (BQM)	Tape and Reel	4000	4000	4000
	Tube	100	100	100
Pin 1 Orientation	Tape and Reel	Black	Black	Black
		See Pre and Post Change Summary for Comparison.		
	Tube	Quadrant 1	Quadrant 1	Quadrant 1
		See Pre and Post Change Summary for Comparison.		
Carrier Tape		See Pre and Post Change Summary for Comparison.		
Cover Tape		See Pre and Post Change Summary for Comparison.		
Plastic Reel		See Pre and Post Change Summary for Comparison.		
Tube	Dimension	Minor dimensional changes. See Pre and Post Change Summary for Comparison.		
	Color	Clear	Clear	Clear
Desiccant and HIC		See Pre and Post Change Summary for Comparison.		
Packing Method		See Pre and Post Change Summary for Comparison.		

**Impacts to Data Sheet:**None

**Change Impact**None

**Reason for Change:**To improve manufacturability by qualifying MTAI as an additional final test site.

**Change Implementation Status:**In Progress

**Estimated First Ship Date:**November 4, 2022 (date code: 2245)

Note: Please be advised that after the estimated first ship date customers may receive pre and post change parts.

**Time Table Summary:**

	June 2022					>	October 2022				November 2022				
Workweek	2	2	2	2	2		4	4	4	4	4	46	4	4	4
	2	3	4	5	6		1	2	3	4	5		7	8	9

Initial PCN Issue Date					X									
Qual Report Availability										X				
Final PCN Issue Date										X				
Estimated Implementation Date											X			

**Method to Identify Change:**Traceability code

**Qualification Report:**Please open the attachments included with this PCN labeled as PCN\_#\_Qual\_Report.

**Revision History:**June 24, 2022: Issued initial notification.

October 27, 2022: Issued final notification. Updated affected CPN list to include catalog part numbers (CPN) released prior issuance of the Final PCN. Attached the qualification report and added estimated first ship date by November 04, 2022

The change described in this PCN does not alter Microchip's current regulatory compliance regarding the material content of the applicable products.

## Attachments:

[PCN\\_CENO-21UTEV408 Pre\\_and\\_Post\\_Change\\_Summary.pdf](#)

[PCN\\_CENO-21UTEV408\\_Qual\\_Report.pdf](#)

Please contact your local [Microchip sales office](#) with questions or concerns regarding this notification.

## Terms and Conditions:

If you wish to receive Microchip PCNs via email please register for our PCN email service at our [PCN home page](#) select register then fill in the required fields. You will find instructions about registering for

Microchips PCN email service in the [PCN FAQ](#) section.

If you wish to change your PCN profile, including opt out, please go to the [PCN home page](#) select login and sign into your myMicrochip account. Select a profile option from the left navigation bar and make the applicable selections.

Affected Catalog Part Numbers (CPN)

ATECC608B-SSHMD-B  
ATECC608B-SSHCZ-B  
ATECC608B-SSHDA-B  
ATECC608A-SSHMD-B  
ATECC108A-SSHDA-B  
ATECC108A-SSHCZ-B  
ATECC508A-SSHDA-B  
ATECC508A-SSHCZ-B  
ATECC508A-SSHHL-B  
ATECC508A-SSHRA-B  
ATECC508A-SSHMT-B  
ATECC608A-SSHDA-B  
ATECC608A-SSHCZ-B  
ATECC608A-SSHHL-B  
ATECC508A-SSH1P-T  
ATECC608B-SSVDA-B  
ATECC608B-SSVHL-T  
ATECC608B-SSVDA-T  
ATECC608B-SSHHL-T  
ATECC108A-SSHDA-T  
ATECC108A-SSHCZ-T  
ATECC508A-SSHDA-T  
ATECC508A-SSHCZ-T  
ATECC508A-SSHHL-T  
ATECC508A-SSHRA-T  
ATECC508A-SSHMT-T  
ATECC508A-SSHZC-T  
ATECC508A-SSHZJ-T  
ATECC508A-SSHAW-T  
ATECC508A-SSHWA-T  
ATECC508A-SSHC9-T  
ATECC608A-SSHDA-T  
ATECC608A-SSHCZ-T  
ATECC608A-SSHHL-T  
ATECC608A-SSH4P-T  
ATECC508A-SSH1F-T  
ATECC508A-SSH1M-T  
ATECC608A-SSH4N-T  
ATECC508A-SSHC6-T  
ATECC508A-SSH1L-T  
ATECC608A-SSH2P-T  
ATECC608A-SSH3M-T  
ATECC608B-SSH3S-T  
ATECC608B-SSHA5-T  
ATECC608B-SSHA6-T  
ATECC608B-SSHCZ-T

---

CENO-21UTEV408 - CCB 5141 Final Notice: Qualification of MTAI as an additional final test site for selected ATECC108A-SSxxx-x, ATECC508A-SSxxx-x, ATECC608A-SSxxx-x, ATECC608B-SSxxx-x and ATSHA204A-SSxxx-x device families available in 8L SOIC (3.90mm) package.

---

ATECC608B-SSHDA-T

ATECC608A-SSHGA-T

ATECC608B-SSHKA-T

ATECC608A-SSHXA-T

ATSHA204A-SSHMD-B

ATSHA204A-SSHDA-B

ATSHA204A-SSH1S-B

ATSHA204A-SSHDA-T

ATSHA204A-SSHCZ-T

# CCB 5141

## Pre and Post Change Summary

### PCN #: CENO-21UTEV408



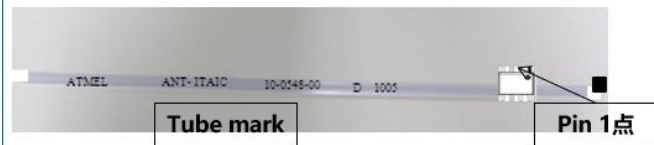
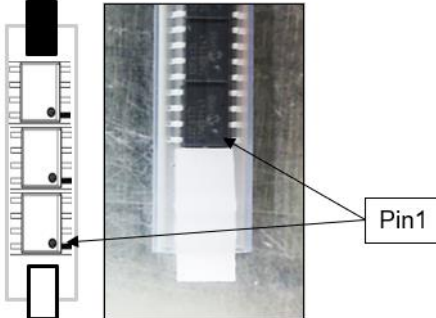
---

A Leading Provider of Smart, Connected and Secure Embedded Control Solutions



SMART | CONNECTED | SECURE

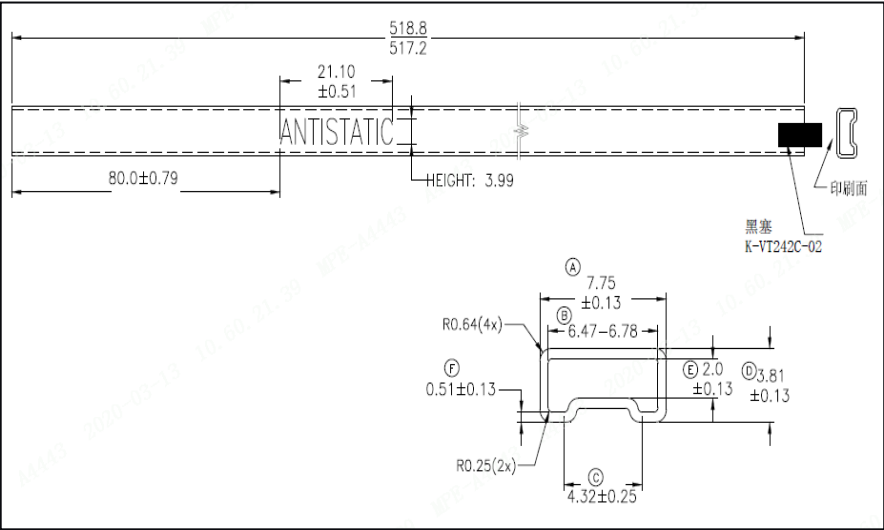
# Tube – BQM and Pin 1 Orientation

	(ASSH)	(MTAI)								
Base Quantity Multiple (BQM)	100 units/tube	100 units/tube								
Pin#1 orientation	<div><table><tr><th>Pin1 Side</th><th>Opposite Side</th></tr><tr><td>Black</td><td>White</td></tr></table></div>	Pin1 Side	Opposite Side	Black	White	<div><table><tr><th>Pin1 Side</th><th>Opposite Side</th></tr><tr><td>White</td><td>Black</td></tr></table></div>	Pin1 Side	Opposite Side	White	Black
Pin1 Side	Opposite Side									
Black	White									
Pin1 Side	Opposite Side									
White	Black									



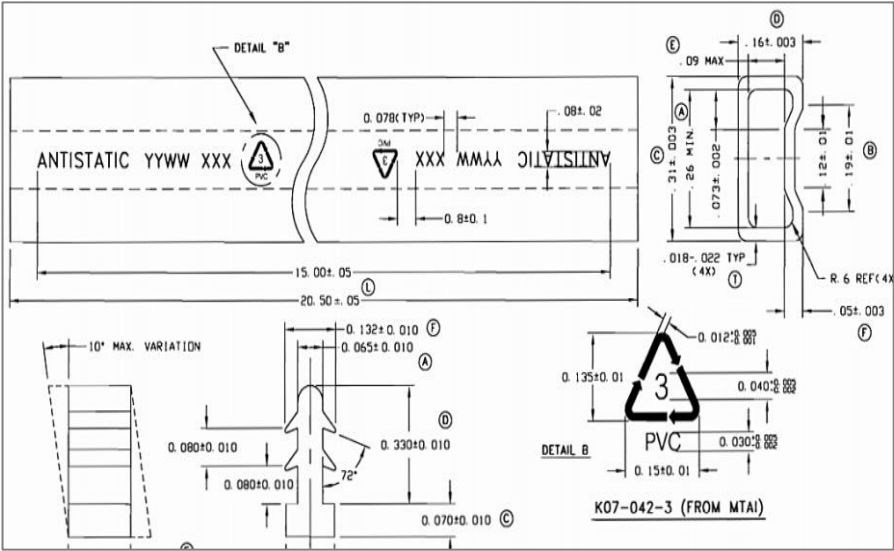
# Tube - Drawing

(ASSH)



Length	Dimension	Color
20.00 +/- 0.03 inch (518 +/- 0.8 mm)	See on drawing	Clear


(MTAI)



Length	Dimension	Color
20.50 +/- 0.05 inch (520.7 +/- 1.2 mm)	See on drawing	Clear


# Tube - Non Dry Packing Method

(ASSH)



WIDTH	LENGTH
254mm	762mm


SSB



ESD标签      生产标签



Carton	Dimension W x L x H (cm)	Number of Bag/carton
M01-030 (C6)	27*62*11	6

(MTAI)



WIDTH	LENGTH
160mm	650mm






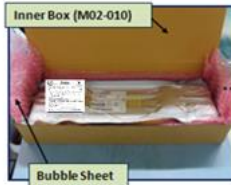
SSB



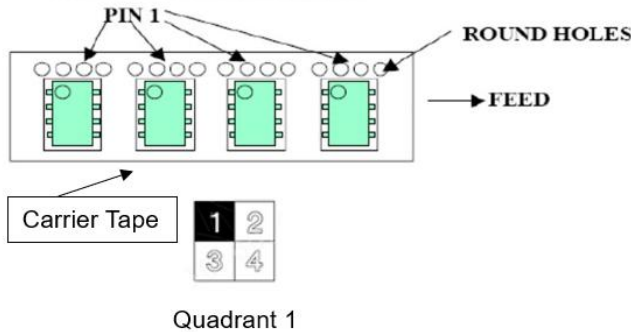
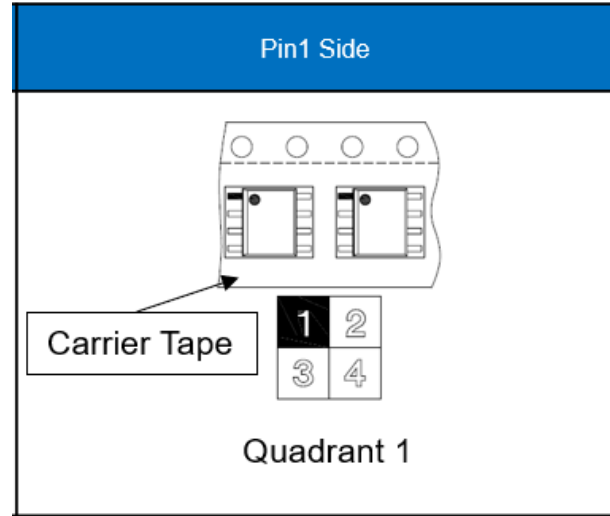
ESD logo      Label      (MTHAI No inner Box)

Carton	Dimension W x L x H (cm)	Number of Bag/carton
M01-025 (C1)	15x64x5.5	1
M01-026 (C2)	15x64x10	2
M01-027 (C3)	15x64x14	3
M01-028 (C4)	28x63x11	4
M01-029 (C6)	28x63x15.5	6
M01-030 (C8)	28x63x20	8

# Tube - Dry Pack Packing Method

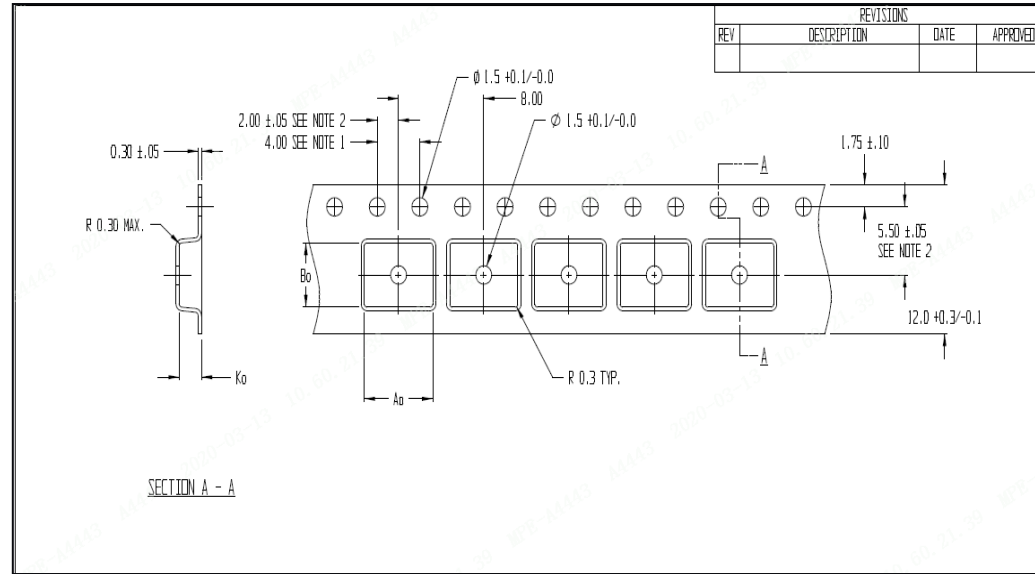
(ASSH)	(MTAI)																														
No Dry Packing	<div><div><div>MBB</div></div><div><table border="1"><thead><tr><th>WIDTH</th><th>LENGTH</th></tr></thead><tbody><tr><td>160</td><td>650</td></tr></tbody></table></div></div> <div><div></div><div></div></div> <table><thead><tr><th colspan="2">Inner box</th><th colspan="2">Carton</th><th rowspan="2">Number of Inner box(es) per carton</th></tr><tr><th>Drawing number</th><th>Dimension W x L x H (cm)</th><th>Drawing number</th><th>Dimension W x L x H (cm)</th></tr></thead><tbody><tr><td rowspan="5">M02-010</td><td rowspan="5">12.9x56.5x8</td><td>M01-022 (PP)</td><td>15.5x62.0x14.0</td><td>1 per 1</td></tr><tr><td>M01-028 (C4)</td><td>28x63.5x11</td><td>2 per 1</td></tr><tr><td>M01-029 (C6)</td><td>28x63.5x15.5</td><td>3 per 1</td></tr><tr><td>M01-030 (C8)</td><td>28x63.5x20</td><td>4 per 1</td></tr><tr><td>M01-040 (S6)</td><td>43x59x19</td><td>6 per 1</td></tr></tbody></table>	WIDTH	LENGTH	160	650	Inner box		Carton		Number of Inner box(es) per carton	Drawing number	Dimension W x L x H (cm)	Drawing number	Dimension W x L x H (cm)	M02-010	12.9x56.5x8	M01-022 (PP)	15.5x62.0x14.0	1 per 1	M01-028 (C4)	28x63.5x11	2 per 1	M01-029 (C6)	28x63.5x15.5	3 per 1	M01-030 (C8)	28x63.5x20	4 per 1	M01-040 (S6)	43x59x19	6 per 1
	WIDTH	LENGTH																													
160	650																														
Inner box		Carton		Number of Inner box(es) per carton																											
Drawing number	Dimension W x L x H (cm)	Drawing number	Dimension W x L x H (cm)																												
M02-010	12.9x56.5x8	M01-022 (PP)	15.5x62.0x14.0	1 per 1																											
		M01-028 (C4)	28x63.5x11	2 per 1																											
		M01-029 (C6)	28x63.5x15.5	3 per 1																											
		M01-030 (C8)	28x63.5x20	4 per 1																											
		M01-040 (S6)	43x59x19	6 per 1																											

# Tape and Reel – BQM and Pin-1 Orientation

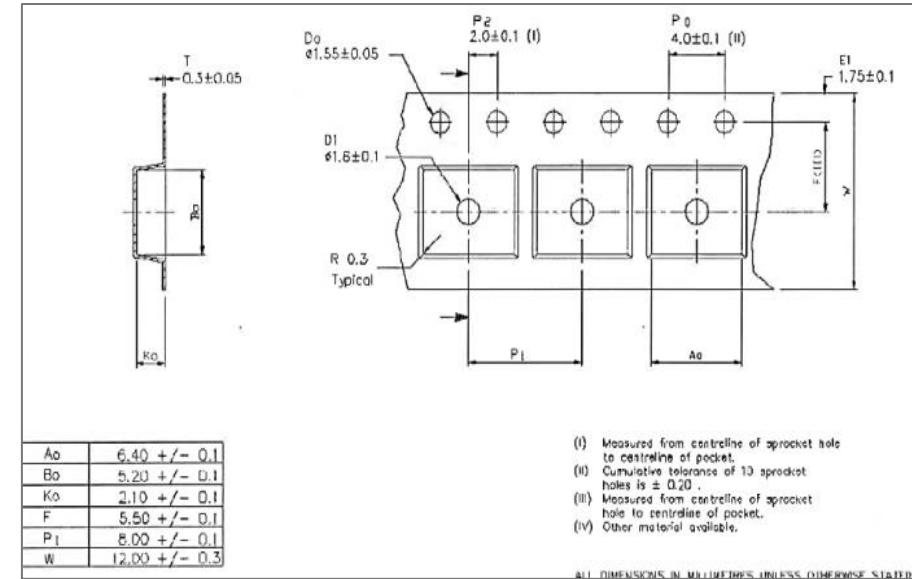
	(ASSH)	(MTAI)
Base Quantity Multiple (BQM)	4000 units/reel	4000 units/reel
Pin#1 orientation		

# Tape and Reel – Carrier Tape

(ASSH)



(MTAI)

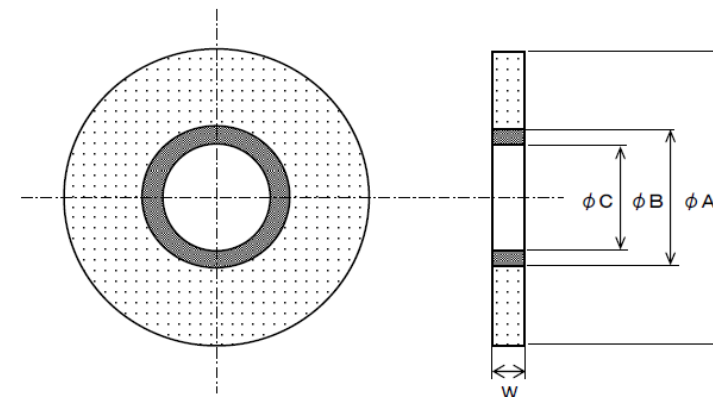
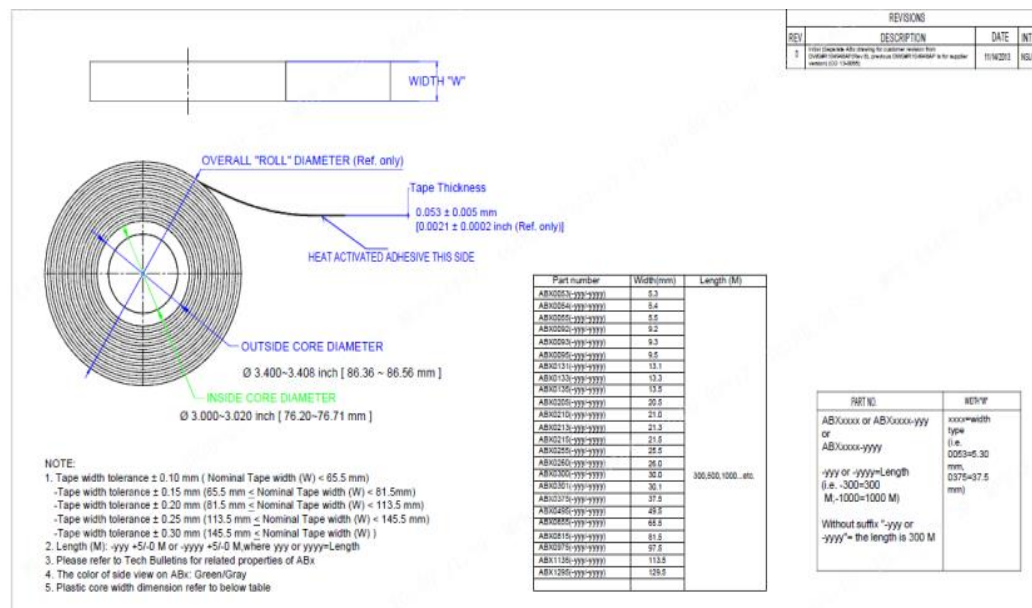


Plant	W (mm.) $\pm 0.3$ or Specific	P (mm.) $\pm 0.1$ or Specific	A0 $\pm 0.1$ or Specific	B0 $\pm 0.1$ or Specific	K0 $\pm 0.1$ or Specific	Thickness
ASSH	12	8	6.40	5.20	2.10	-
MTAI	12	8	6.40	5.20	2.10	-

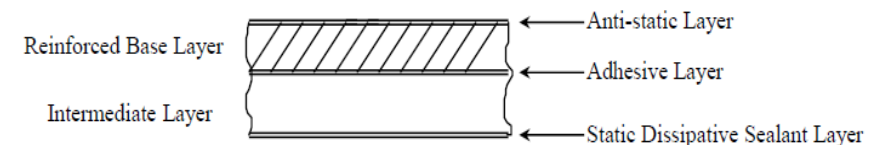
# Tape and Reel – Cover Tape

(ASSH)

(MTAI)



## STRUCTURE



Plant	Carrier Width	Width "W" (mm)	Thickness (mm)	Sealing Mythology
ASSH	12mm	9.2+/-0.07	0.053 ±0.005	Heat seal
MTAI	12mm	9.05+0.05/-0.15	0.050 ±0.010	Heat seal



Tape and Reel – Plastic Reel

(ASSH)

TAPE WIDTH (mm)	W12	W15	W18	W21	W24
12mm	330	100	12.4	18.4	
18mm	330	100	16.4	23.4	
24mm	330	100	24.4	31.4	
30mm	330	100	32.4	39.4	
40mm	330	100	44.4	51.4	

LEAD	SH. RANGE	TYPE	COLOR
A	BELOW 10 <sup>10</sup>	ANTISTATIC	ALL THIRDS
B	10 <sup>10</sup> TO 10 <sup>11</sup>	STATIC DISSIPATIVE	BLACK ONLY
C	10 <sup>10</sup> & BELOW 10 <sup>11</sup>	CONDUCTIVE (SEMI)	BLACK ONLY
E	10 <sup>10</sup> TO 10 <sup>11</sup>	ANTISTATIC (COATED)	ALL THIRDS

(MTAI)

REVISION	DESCRIPTION	DATE	BY	APPROVED
1	Initial Release	Jan. 1978	REVISION 1	REVISION 1
2	Added Dimension W1	Jan. 1978	REVISION 2	REVISION 2
3	Added Dimension W2	Jan. 1978	REVISION 3	REVISION 3
4	Added Dimension W3	Jan. 1978	REVISION 4	REVISION 4
5	Added Dimension W4	Jan. 1978	REVISION 5	REVISION 5
6	Added Dimension W5	Jan. 1978	REVISION 6	REVISION 6
7	Added Dimension W6	Jan. 1978	REVISION 7	REVISION 7
8	Added Dimension W7	Jan. 1978	REVISION 8	REVISION 8
9	Added Dimension W8	Jan. 1978	REVISION 9	REVISION 9
10	Added Dimension W9	Jan. 1978	REVISION 10	REVISION 10
11	Added Dimension W10	Jan. 1978	REVISION 11	REVISION 11
12	Added Dimension W11	Jan. 1978	REVISION 12	REVISION 12
13	Added Dimension W12	Jan. 1978	REVISION 13	REVISION 13
14	Added Dimension W13	Jan. 1978	REVISION 14	REVISION 14
15	Added Dimension W14	Jan. 1978	REVISION 15	REVISION 15
16	Added Dimension W15	Jan. 1978	REVISION 16	REVISION 16
17	Added Dimension W16	Jan. 1978	REVISION 17	REVISION 17
18	Added Dimension W17	Jan. 1978	REVISION 18	REVISION 18
19	Added Dimension W18	Jan. 1978	REVISION 19	REVISION 19
20	Added Dimension W19	Jan. 1978	REVISION 20	REVISION 20
21	Added Dimension W20	Jan. 1978	REVISION 21	REVISION 21
22	Added Dimension W21	Jan. 1978	REVISION 22	REVISION 22
23	Added Dimension W22	Jan. 1978	REVISION 23	REVISION 23
24	Added Dimension W23	Jan. 1978	REVISION 24	REVISION 24
25	Added Dimension W24	Jan. 1978	REVISION 25	REVISION 25
26	Added Dimension W25	Jan. 1978	REVISION 26	REVISION 26
27	Added Dimension W26	Jan. 1978	REVISION 27	REVISION 27
28	Added Dimension W27	Jan. 1978	REVISION 28	REVISION 28
29	Added Dimension W28	Jan. 1978	REVISION 29	REVISION 29
30	Added Dimension W29	Jan. 1978	REVISION 30	REVISION 30
31	Added Dimension W30	Jan. 1978	REVISION 31	REVISION 31
32	Added Dimension W31	Jan. 1978	REVISION 32	REVISION 32
33	Added Dimension W32	Jan. 1978	REVISION 33	REVISION 33
34	Added Dimension W33	Jan. 1978	REVISION 34	REVISION 34
35	Added Dimension W34	Jan. 1978	REVISION 35	REVISION 35
36	Added Dimension W35	Jan. 1978	REVISION 36	REVISION 36
37	Added Dimension W36	Jan. 1978	REVISION 37	REVISION 37
38	Added Dimension W37	Jan. 1978	REVISION 38	REVISION 38
39	Added Dimension W38	Jan. 1978	REVISION 39	REVISION 39
40	Added Dimension W39	Jan. 1978	REVISION 40	REVISION 40
41	Added Dimension W40	Jan. 1978	REVISION 41	REVISION 41
42	Added Dimension W41	Jan. 1978	REVISION 42	REVISION 42
43	Added Dimension W42	Jan. 1978	REVISION 43	REVISION 43
44	Added Dimension W43	Jan. 1978	REVISION 44	REVISION 44
45	Added Dimension W44	Jan. 1978	REVISION 45	REVISION 45
46	Added Dimension W45	Jan. 1978	REVISION 46	REVISION 46
47	Added Dimension W46	Jan. 1978	REVISION 47	REVISION 47
48	Added Dimension W47	Jan. 1978	REVISION 48	REVISION 48
49	Added Dimension W48	Jan. 1978	REVISION 49	REVISION 49
50	Added Dimension W49	Jan. 1978	REVISION 50	REVISION 50
51	Added Dimension W50	Jan. 1978	REVISION 51	REVISION 51
52	Added Dimension W51	Jan. 1978	REVISION 52	REVISION 52
53	Added Dimension W52	Jan. 1978	REVISION 53	REVISION 53
54	Added Dimension W53	Jan. 1978	REVISION 54	REVISION 54
55	Added Dimension W54	Jan. 1978	REVISION 55	REVISION 55
56	Added Dimension W55	Jan. 1978	REVISION 56	REVISION 56
57	Added Dimension W56	Jan. 1978	REVISION 57	REVISION 57
58	Added Dimension W57	Jan. 1978	REVISION 58	REVISION 58
59	Added Dimension W58	Jan. 1978	REVISION 59	REVISION 59
60	Added Dimension W59	Jan. 1978	REVISION 60	REVISION 60
61	Added Dimension W60	Jan. 1978	REVISION 61	REVISION 61
62	Added Dimension W61	Jan. 1978	REVISION 62	REVISION 62
63	Added Dimension W62	Jan. 1978	REVISION 63	REVISION 63
64	Added Dimension W63	Jan. 1978	REVISION 64	REVISION 64
65	Added Dimension W64	Jan. 1978	REVISION 65	REVISION 65
66	Added Dimension W65	Jan. 1978	REVISION 66	REVISION 66
67	Added Dimension W66	Jan. 1978	REVISION 67	REVISION 67
68	Added Dimension W67	Jan. 1978	REVISION 68	REVISION 68
69	Added Dimension W68	Jan. 1978	REVISION 69	REVISION 69
70	Added Dimension W69	Jan. 1978	REVISION 70	REVISION 70
71	Added Dimension W70	Jan. 1978	REVISION 71	REVISION 71
72	Added Dimension W71	Jan. 1978	REVISION 72	REVISION 72
73	Added Dimension W72	Jan. 1978	REVISION 73	REVISION 73
74	Added Dimension W73	Jan. 1978	REVISION 74	REVISION 74
75	Added Dimension W74	Jan. 1978	REVISION 75	REVISION 75
76	Added Dimension W75	Jan. 1978	REVISION 76	REVISION 76
77	Added Dimension W76	Jan. 1978	REVISION 77	REVISION 77
78	Added Dimension W77	Jan. 1978	REVISION 78	REVISION 78
79	Added Dimension W78	Jan. 1978	REVISION 79	REVISION 79
80	Added Dimension W79	Jan. 1978	REVISION 80	REVISION 80
81	Added Dimension W80	Jan. 1978	REVISION 81	REVISION 81
82	Added Dimension W81	Jan. 1978	REVISION 82	REVISION 82
83	Added Dimension W82	Jan. 1978	REVISION 83	REVISION 83
84	Added Dimension W83	Jan. 1978	REVISION 84	REVISION 84
85	Added Dimension W84	Jan. 1978	REVISION 85	REVISION 85
86	Added Dimension W85	Jan. 1978	REVISION 86	REVISION 86
87	Added Dimension W86	Jan. 1978	REVISION 87	REVISION 87
88	Added Dimension W87	Jan. 1978	REVISION 88	REVISION 88
89	Added Dimension W88	Jan. 1978	REVISION 89	REVISION 89
90	Added Dimension W89	Jan. 1978	REVISION 90	REVISION 90
91	Added Dimension W90	Jan. 1978	REVISION 91	REVISION 91
92	Added Dimension W91	Jan. 1978	REVISION 92	REVISION 92
93	Added Dimension W92	Jan. 1978	REVISION 93	REVISION 93
94	Added Dimension W93	Jan. 1978	REVISION 94	REVISION 94
95	Added Dimension W94	Jan. 1978	REVISION 95	REVISION 95
96	Added Dimension W95	Jan. 1978	REVISION 96	REVISION 96
97	Added Dimension W96	Jan. 1978	REVISION 97	REVISION 97
98	Added Dimension W97	Jan. 1978	REVISION 98	REVISION 98
99	Added Dimension W98	Jan. 1978	REVISION 99	REVISION 99
100	Added Dimension W99	Jan. 1978	REVISION 100	REVISION 100

Plant	Width	Hub	Color
ASSH	12mm	4inch (100mm)	White
MTAI	12mm	4inch (100mm)	Dark Blue

MICROCHIP

9

# Tape and Reel – Non-Dry Packing Method

## (ASSH)



WIDTH	LENGTH
370mm	460mm

SSB



SSB



label

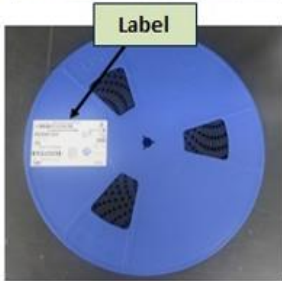
Dimension	Number of reel per carton
W x L x H (cm)	Reel diameter (D) = 330mm
	Carrier Tape Width 12mm
38.4x36.2x38.5	15

## (MTAI)



SSB

WIDTH	LENGTH
370mm	420mm



Label



Static Sensitive Bag

Label

SSB




Antistatic Tape

(MTHAI No inner Box)

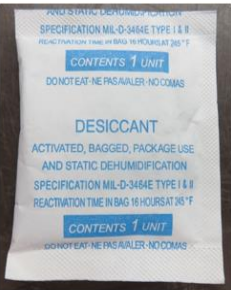
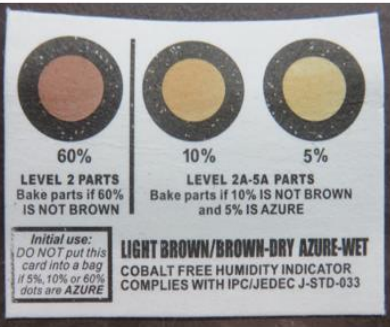
Carton	Dimension W x L x H (cm)	Number of reel per carton
		Reel diameter (D) = 330mm
		Carrier Tape Width 12mm
M01-011 (TT)	36.5x38x39.5	15
M01-012 (B1)	35.5x35.5x2.8	1
M01-013 (B2)	35.5x35.5x4	2
M01-014 (B3)	35.5x35.5x6	3
M01-015 (B8)	35.5x35.5x16.5	8



# Tape and Reel –Dry Pack

(ASSH)	(MTAI)																									
No Dry Packing	<div><div><table><tr><th>WIDTH</th><th>LENGTH</th></tr><tr><td>370mm</td><td>420mm</td></tr></table><p>MBB</p></div><div><div><div><div>Label</div><div>Desiccant 2 Units</div><div>HIC</div></div><div><div>Moisture Barrier Bag</div><div>Caution Label</div><div>Label</div></div><div><div>Inner Box</div></div></div><div><div><div><div>Bubble Sheet</div><div>Moisture Sensitive Label</div><div>Transparent Tape</div></div><div><div>Label</div><div>Inner Box</div></div></div></div></div></div>	WIDTH	LENGTH	370mm	420mm																					
WIDTH	LENGTH																									
370mm	420mm																									
	<table><tr><th colspan="2">Inner box</th><th colspan="2">Carton</th><th rowspan="3">Number of Inner box(es) per carton</th></tr><tr><th rowspan="2">Drawing number</th><th>Dimension</th><th rowspan="2">Drawing number</th><th>Dimension</th></tr><tr><th>W x L x H (cm)</th><th>W x L x H (cm)</th></tr><tr><td rowspan="4">M02-015 (Small)</td><td rowspan="4">37x35.1x5.3</td><td>M01-044 (SM)</td><td>37.0x38.0x11.0</td><td>1 : 1</td></tr><tr><td>M01-045 (S4)</td><td>37.0x38.0x22.5</td><td>3 : 1</td></tr><tr><td>M01-046 (S5)</td><td>37.0x39.0x39.0</td><td>6 : 1</td></tr><tr><td>M01-047 (S3)</td><td>42.0x66.0x39.0</td><td>11 : 1</td></tr></table>	Inner box		Carton		Number of Inner box(es) per carton	Drawing number	Dimension	Drawing number	Dimension	W x L x H (cm)	W x L x H (cm)	M02-015 (Small)	37x35.1x5.3	M01-044 (SM)	37.0x38.0x11.0	1 : 1	M01-045 (S4)	37.0x38.0x22.5	3 : 1	M01-046 (S5)	37.0x39.0x39.0	6 : 1	M01-047 (S3)	42.0x66.0x39.0	11 : 1
Inner box		Carton		Number of Inner box(es) per carton																						
Drawing number	Dimension	Drawing number	Dimension																							
	W x L x H (cm)		W x L x H (cm)																							
M02-015 (Small)	37x35.1x5.3	M01-044 (SM)	37.0x38.0x11.0	1 : 1																						
		M01-045 (S4)	37.0x38.0x22.5	3 : 1																						
		M01-046 (S5)	37.0x39.0x39.0	6 : 1																						
		M01-047 (S3)	42.0x66.0x39.0	11 : 1																						

# Desiccant and HIC

	(ASSH)	(MTAI)
Desiccant	No desiccant	 <p>Compliant with Mil-D-3464, TYPE I and II</p>
HIC	No HIC	 <p>3 Dots Cobalt free only</p>



**QUALIFICATION REPORT SUMMARY**  
RELIABILITY LABORATORY

**PCN #: CENO-21UTEV408**

**Date**  
**October 20, 2022**

**Qualification of MTAI as an additional final test site for  
selected ATECC108A-SSxxx-x, ATECC508A-SSxxx-x,  
ATECC608A-SSxxx-x, ATECC608B-SSxxx-x and ATSHA204A-  
SSxxx-x device families available in 8L SOIC (3.90mm)  
package.**

**Purpose:** Qualification of MTAI as an additional final test site for selected ATECC108A-SSxxx-x, ATECC508A-SSxxx-x, ATECC608A-SSxxx-x, ATECC608B-SSxxx-x and ATSHA204A-SSxxx-x device families available in 8L SOIC (3.90mm) package.

**CCB#** 5141

Test	Parameters	Result
Full Correlation	<div>Lot size is &gt; 5K</div> <ul style="list-style-type: none"><li>100% test with FT for yield comparison</li><li>Acceptance: Accept 1% delta or PE/TE approval</li><li>Code verification, each die must be unique</li></ul>	<b>PASSED</b>