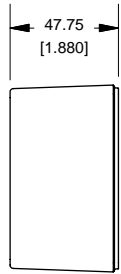
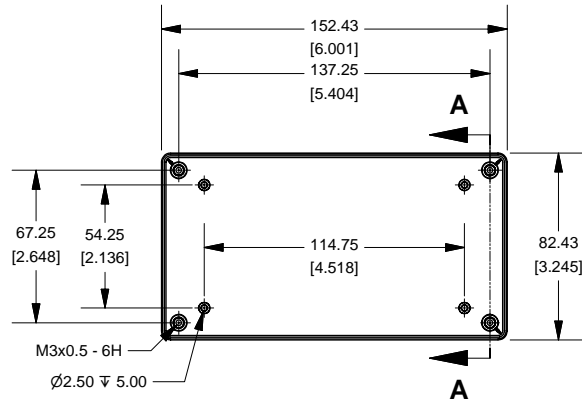


1591XXDFL Enclosure

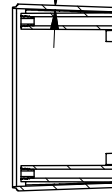


SIDE VIEW OF BOX

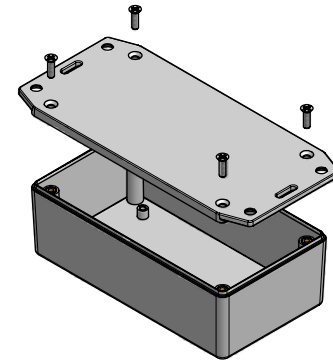


TOP VIEW OF BOX

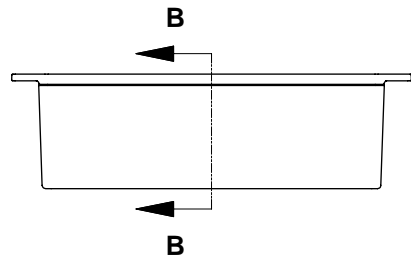
AVERAGE WALL THICKNESS
2.00
[.079]



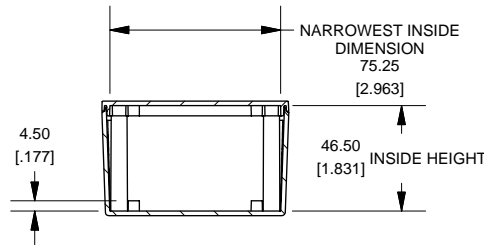
SECTION A-A



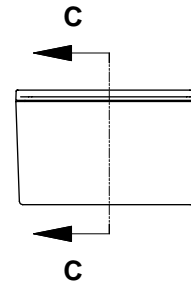
EXPLODED VIEW OF ENCLOSURE



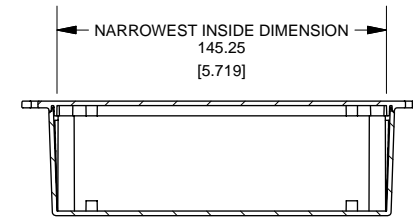
SIDE VIEW OF ENCLOSURE



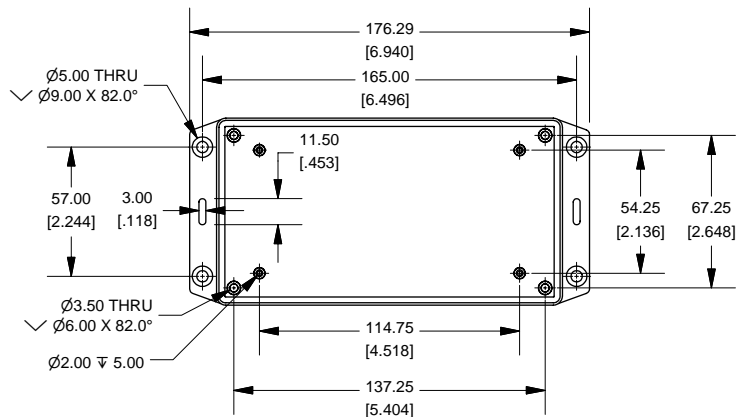
SECTION B-B
SCALE 0.30 : 1



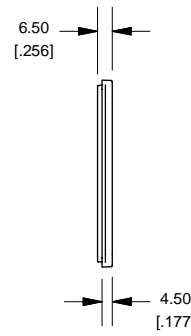
END VIEW OF ENCLOSURE



SECTION C-C
SCALE 0.30 : 1



BOTTOM VIEW OF LID



SIDE VIEW OF LID



www.hammondmfg.com

NOTE
Purchased assembly includes lid and box made from FRABS 94-V0 material and cover screws.

| | |
|--|--|
| 1591XXDFL | |
| 1591XXDFL Enclosure | |
| Flame Retardant ABS (UL94-V0) | |
| Black Enclosure - RAL 7011 | 1591XXDFLBK |
| ACCESSORIES | |
| For Flame Retardant ABS (UL94-V0) | |
| Black Enclosure Cover Screws (Pkg 100) [Machine Type M3-0.5 X 10mm] | 1591MS100BK |
| P.C. Board Screws (All Boxes) | |
| P.C. Board Screws [#4 x 1/4" self-tapping (6.4mm)] | 1593ATS50 (Pkg 50) 1593ATS100 (Pkg 100) |