

# Han<sup>®</sup> Q Hybrid

Power Signal & Data



Pushing Performance  
Since 1945

For further information, please reach out to  
techsupportUS@HARTING.com



## Technical Details

### Power

For 3-phase applications –  
motors, drives, heaters pumps etc.

4+ PE – 20A, 600V  
26AWG...12AWG

### Signal

Ex. brake, temperature control,  
encoders etc.

4 contacts – 10A, 250V  
26AWG...14AWG

### Data

For Ethernet communication

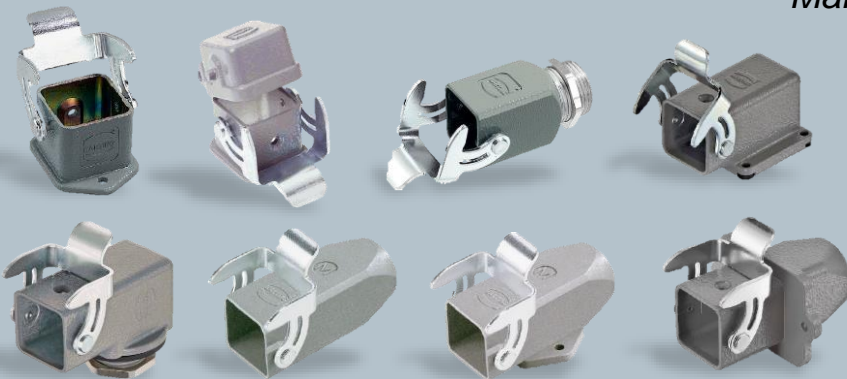
Cat.5 Element



The ultimate hybrid  
interface!

## Hood & Housing Configurations

Many mounting possibilities for any application



### Housing Range

Bulkhead Mount, Screw Mount, Inline, Angled, Panel Feed Through

### Hood Range

Top Entry, Side Entry

## Environmental Protection

Wide selection of hood & housing materials for various degrees of protection



**Grey Metal**



**HMC**  
High Mating  
Cycle  
>10,000 Cycles



**Plastic**



**Marine**  
For outdoor use



**EMC**  
For higher EMC  
requirements



**HPR**  
IP68/69k  
For the most  
rugged environments



**INOX**  
Stainless Steel

# Han<sup>®</sup> Q Hybrid

Power Signal & Data



Pushing Performance  
Since 1945

For further information, please reach out to  
[techsupportUS@HARTING.com](mailto:techsupportUS@HARTING.com)

Part Number	Description	Image
<a href="#">09 12 012 3005</a>	Han <sup>®</sup> Q Hybrid Male Insert with data element	
<a href="#">09 12 012 3105</a>	Han <sup>®</sup> Q Hybrid Female Insert with data element	
<a href="#">09 12 012 3006</a>	Han <sup>®</sup> Q Hybrid Male Insert without data element	
<a href="#">09 12 012 3106</a>	Han <sup>®</sup> Q Hybrid Female Insert without data element	
<a href="#">09 12 000 9925</a>	Han <sup>®</sup> Q Hybrid Male Data Element (contacts not included)	
<a href="#">09 12 000 9935</a>	Han <sup>®</sup> Q Hybrid Female Data Element (contacts not included)	
<a href="#">09 12 000 9926</a>	Han <sup>®</sup> Q Hybrid Male Coding Element	
<a href="#">09 12 000 9936</a>	Han <sup>®</sup> Q Hybrid Female Coding Element	