

Electronic Outdoor Time Delay Switch

User Manual



Part Number: PEL00590

Important Safety Information

Risk of electrical shock. Always isolate the power at the mains before installing or maintaining this switch.

- This product must be installed by a competent person in accordance with the Building Regulations and the current edition of the IET Wiring Regulations (BS7671).
- This product is suitable for use with 220-240V~ 50Hz.
- This product is suitable for indoor and outdoor use.
- This product is double insulated and does not require connecting to ground.
- This product will switch incandescent lighting loads of up to 16A maximum, fluorescent lighting loads up to 6A and compact fluorescent / low energy lighting loads also low voltage lighting / fans and ventilation equipment loads up to 3A maximum.
- If using this product to switch fluorescent lighting, the light fittings must have a high power factor, or if your light fittings strike inconsistently a power factor correction capacitor may be required to be fitted.
- Refer to the lighting manufacturers or power factor correction capacitors literature to determine the exact specification required for your installation. A minimum of 1µF for each fitting may be connected. Maximum capacitance not exceeding 40µF.

Installation

NOTE: Before drilling into walls, check that there are no hidden obstructions behind the mounting surface such as pipes or cables.

- The timer can be triggered by applying a live connection to the 'TRIGGER' terminal. This can be done using a momentary switch in lighting applications for example, or an unswitched link for applications such as an extractor fan over-run.
 - For switching multiple loads, connect two or more switches in parallel using the same mains power supply connection.
1. Isolate the mains power to the circuit you are connecting this switch into.
 2. Provide a mains supply according to building regulations with reference to IEE wiring regulations (BS7671).
 3. Remove the 4 mounting screws at each corner of the front part of the casing.
 4. Mark the position of the 4 mounting holes as indicated on the outer face of the rear casing (62mm x 92mm centres), drill holes and fit wall plugs as required.
 5. Whether you are using cable glands or conduit, you will need to make appropriate hole(s) in the rear half of the casing to suit your chosen system.
 6. Secure the rear casing to the wall using suitable fixings.
 7. Feed the wiring in through the glands or conduit connections and connect to the terminal block on the front part of the switch casing as shown on Figure 1.
 - Brown – Live terminal 'L' in and 'L1' out
 - Blue – Neutral terminal 'N'.
 8. Set the desired 'ON' time by combination of the DIP switches and rotary control referring to Figure 2.
 9. Fit the front part of the switch to the rear part and insert the 4 screws and tighten. Do not overtighten or you may strip the threads.
 10. Restore mains power and wait 20 seconds for the switch circuitry to stabilise then activate the switch and check the 'on' duration.
 11. If incorrect turn off the mains power and open the casing and adjust the setting then refit the front panel before restoring the power and re-testing.

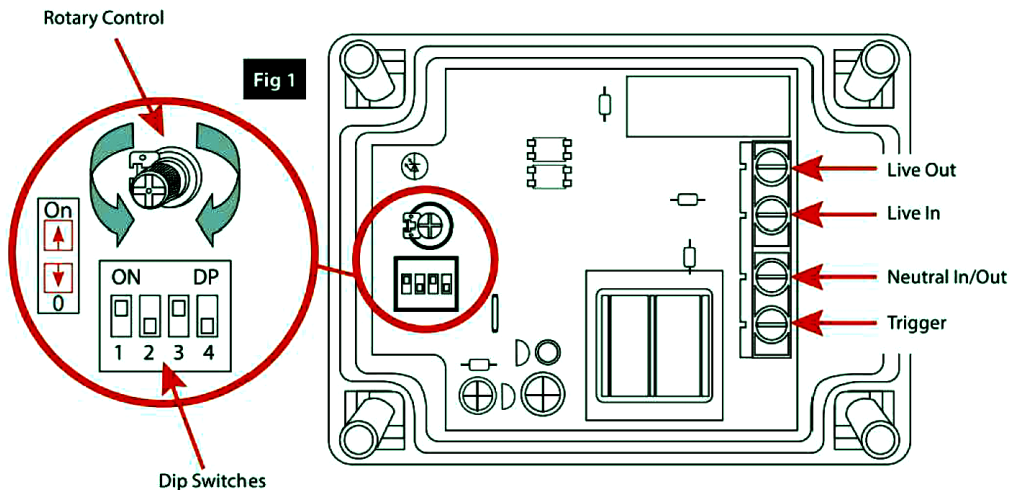


Figure 1.

DIP Switch Setting				Timer Function
1	2	3	4	
0	0	1	0	2 seconds to 50 seconds
1	0	1	0	50 seconds to 20 minutes
1	1	1	0	20 minutes to 70 minutes
1	1	0	0	70 minutes to 2 hours
-	-	-	1	Timer function disabled

Figure 2.

Operation

- Once the button is touched the switched power will be supplied for the time period set on the internal controls. Further touches of the button during the timed cycle will shut down the power immediately.
- When the timed cycle has elapsed and the outgoing power is cut, the button can be touched again to begin the timed cycle once more.

Cleaning and Maintenance

Clean the product with a soft, dry cloth only. Do not use any solvents or abrasive chemical cleaners.

Specifications

Input Voltage	220-240V~ 50Hz
Rated Power Handling	3700W Max
Suitable for use with	Incandescent lighting Fluorescent lighting Low voltage with transformer Ventilation fans and equipment
Timer Range	2 seconds - 2 hours
O/A Dimensions L×W×H	80mm × 111mm × 70mm
Switching Mode	One way



INFORMATION ON WASTE DISPOSAL FOR CONSUMERS OF ELECTRICAL & ELECTRONIC EQUIPMENT.

When this product has reached the end of its life it must be treated as Waste Electrical & Electronic Equipment (WEEE). Any WEEE marked products must not be mixed with general household waste, but kept separate for the treatment, recovery and recycling of the materials used. Waste batteries can be returned to any waste battery recycling point which are provided by most battery retailers. Contact your local authority for details of battery and recycling schemes in your area.

Made in China
PR2 9PP
PO Box 13362 Dublin 2
Man Rev 2.0

Important Notice : This data sheet and its contents (the "Information") belong to the members of the AVNET group of companies (the "Group") or are licensed to it. No licence is granted for the use of it other than for information purposes in connection with the products to which it relates. No licence of any intellectual property rights is granted. The Information is subject to change without notice and replaces all data sheets previously supplied. The Information supplied is believed to be accurate but the Group assumes no responsibility for its accuracy or completeness, any error in or omission from it or for any use made of it. Users of this data sheet should check for themselves the Information and the suitability of the products for their purpose and not make any assumptions based on information included or omitted. Liability for loss or damage resulting from any reliance on the Information or use of it (including liability resulting from negligence or where the Group was aware of the possibility of such loss or damage arising) is excluded. This will not operate to limit or restrict the Group's liability for death or personal injury resulting from its negligence. pro-ELEC is the registered trademark of Premier Farnell Limited 2019.

Newark.com/exclusive-brands
Farnell.com/exclusive-brands
Element14.com/exclusive-brands