



- EN 1155 approved
- Wall mounting
- Holding strength 50 and 100 Kg
- Versions with release button available
- Damping counter plate included

Series 1330 / 1340

Base material magnet	ABS, black
Core material	Steel
Keeper plate material	Black ABS support, steel plate
Operation	Released when de-energised
Type of connection	Terminals / wires
Operating temperature	-10°C to +55°C
Protection rating	IP40
Standard equipment	Flexible keeper plate, circuit protection diodes

Series 1330 / 1340

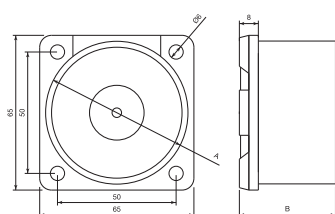
Compact electromagnetic door release unit

The simple and compact construction enables a reduced size and a very interesting quality/cost ratio.

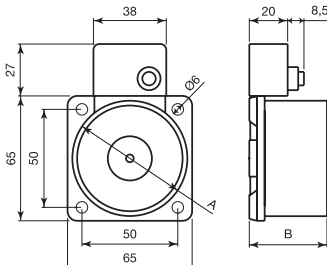
The door release units series 1330/1340 are equipped with a built-in spring releaser which ensures that residual magnetic forces are overcome therefore guaranteeing a quick and reliable release of the door. Supplied with a dual protection diode for protection against disturbances and polarity reversals. Provided with counter-plate.

EN 1155 approved.

Dimensions



1335-CSA / 1345-CSA dimensions



Order codes

Code	Holding strength $\pm 15\%$	Nominal voltage	Nominal current	Core diameter A	Height B	Release button	Connection type	Package weight	Notes
1330-D	50 Kg/490 N	24 Vdc	45 mA	50 mm	36 mm	no	Wires	0.54 Kg	2 protection diodes
1335-CSA	50 Kg/490 N	24 Vdc	45 mA	50 mm	36 mm	yes	Terminals	0.55 Kg	2 protection diodes
1340-D	100 Kg/980 N	24 Vdc	100 mA	60 mm	40.5 mm	no	Wires	0.80 Kg	2 protection diodes
1345-CSA	100 Kg/980 N	24 Vdc	100 mA	60 mm	40.5 mm	yes	Terminals	0.81 Kg	2 protection diodes

Certificate and Declaration of Performance available on our website www.coopercsa.it

Accessories

1353-CSA	55 mm diameter adjustable keeper plate
1363-CSA	60 mm diameter adjustable keeper plate