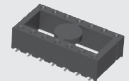
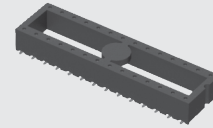


ICF-640-S-O

ICF-328-T-O



ICF-314-S-O

(2.54 mm) .100"

ICF SERIES

SURFACE MOUNT DIP SOCKET

SPECIFICATIONS

For complete specifications and recommended PCB layouts see www.samtec.com?ICF

Insulator Material:
Black Liquid Crystal Polymer

Contact Material:

BeCu

Plating:

Sn or Au over

50 μ " (1.27 μ m) Ni

Operating Temp Range:

-55 °C to +125 °C

Insertion Depth:

(2.54 mm) .100" to

(3.81 mm) .150"

Insertion Force/Contact:

(1.39 N) 5 oz average

Withdrawal Force/Contact:

(1.11 N) 4 oz average

RoHS Compliant:

Yes

PROCESSING

Lead-Free Solderable:

Yes

SMT Lead Coplanarity:

(0.15 mm) .006" max*

*(.004" stencil solution may be available; contact IPG@samtec.com)

RECOGNITIONS

For complete scope of recognitions see www.samtec.com/quality



FILE NO. E111594

TYPE SOCKET

ICF
=Surface Mount
IC Socket

ROW SPACING & NO. OF CONTACTS

PLATING OPTION

-S
=30 μ " (0.76 μ m)
Gold on contact,
Matte Tin on tail

-T
= Matte Tin

TAIL OPTION

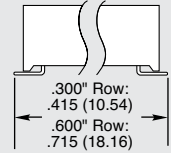
-I
=Tails In



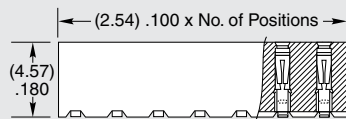
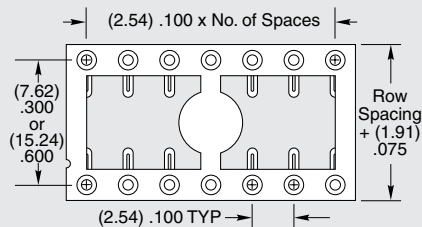
OTHER OPTION

-TR
=Tape &
Reel
Packaging

-O
=Tails Out



Specify from chart below



| "-XXX" | Row Space | No. of Contacts |
|--------|--------------|-----------------|
| -308 | (7.62) .300 | 08 |
| -314 | | 14 |
| -316 | | 16 |
| -318 | | 18 |
| -320 | | 20 |
| -328 | (15.24) .600 | 28 |
| -624 | | 24 |
| -628 | | 28 |
| -632 | | 32 |
| -640 | | 40 |

Note:
Some sizes, styles and options are non-standard, non-returnable.