

Strengthening the link between the real and the digital world (/cms/en/about-infineon/company/cypress-acquisition/)

> Home (/cms/de/) > Produkte (/cms/de/product/)

> Evaluation Boards (/cms/de/product/evaluation-boards/) > OPTIGA TRUST M IOT KIT

OPTIGA TRUST M IOT KIT

Überblick

Easy-to-use kit with the OPTIGA™ Trust M for your IoT device security use case

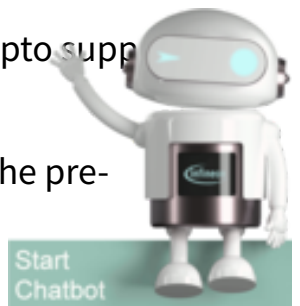
The OPTIGA™ Trust M IoT Security Development Kit is the easiest way to develop and evaluate end-to-end security use cases for your IoT devices.

The kit enables customers to prototype various security use cases and build full-featured IoT applications. The board includes:

- OPTIGA™ Trust M security solution
- PSoC™ 62, an Arm® Cortex®-M4/M0+ microcontroller
- AIROC™ CYW43012 Wi-Fi & Bluetooth® combo chip is a low power device that supports dual-band (2.4 and 5.0 GHz) Wi-Fi and Bluetooth® 5.0.

This development board is delivered with two ready-to-use security use cases:

- Secured communication with AWS over MQTT using AnyCloud with crypto support and the OPTIGA™ Trust M.
- Secured zero-touch cloud provisioning using CIRRENT™ Cloud ID and the pre-provisioned X.509 certificate delivered with the OPTIGA™ Trust M.



You can also use this development kit to build additional IoT security use cases such as IP protection, crypto offloading, secured firmware updates, and more.

The kit is supported by ModusToolbox™. The OPTIGA™ Trust M host library is available as open source code under **MIT LICENSE** (<https://github.com/Infineon/optiga-trust-m/blob/master/LICENSE>) on our **GitHub repository** (<https://github.com/Infineon/optiga-trust-m>).

Zusammenfassung der Merkmale

- OPTIGA™ Trust M IoT Security Development Kit featuring Adafruit Feather compatibility, OPTIGA™ Trust M, PSoC™ 62 MCU and AIROC™ Wi-Fi + Bluetooth® combo
- Pre-configured kit with two security use cases:
 - AnyCloud MQTT connectivity to AWS
 - Secured zero-touch cloud provisioning using CIRRENT™ Cloud ID
- ModusToolbox™ support

Vorteile

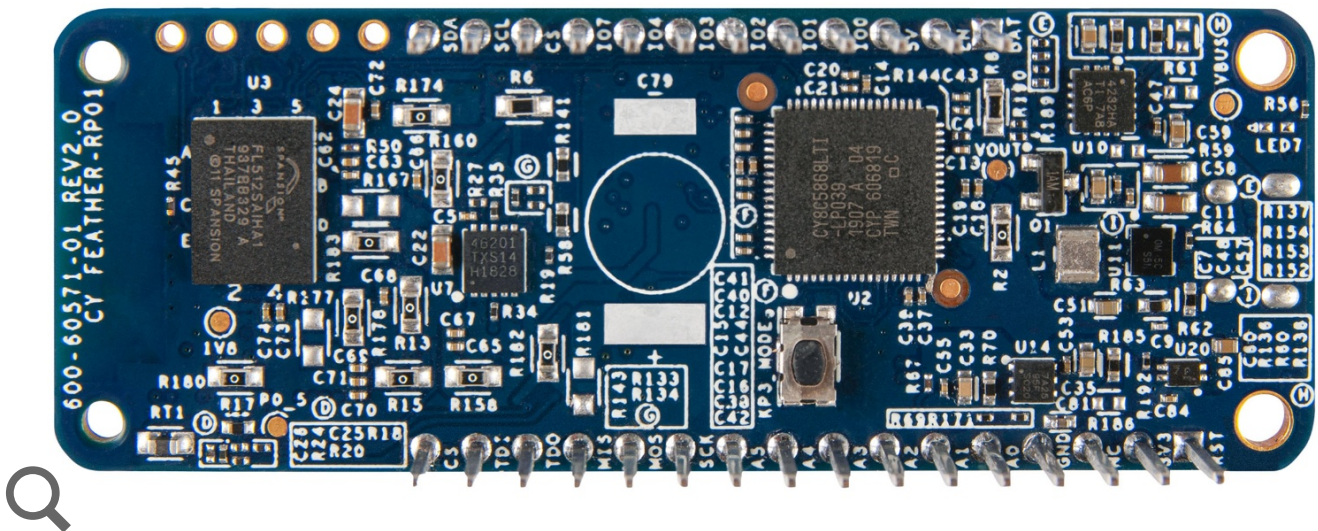
- Instant evaluation of secured cloud communication and secured cloud provisioning use cases
- All main board components are provided by Infineon and supported via ModusToolbox™
- Flexibility to quickly develop full-featured IoT device prototypes

Potentielle Ziellanwendungen

- **Smart homes** (</cms/en/applications/smart-home-building/>)
Smart buildings (</cms/en/applications/smart-home-building/home-building-automation/>)
- **Industrial automation / PLCs** (</cms/en/applications/industrial/industrial-automation/programmable-logic-controller-plc/>)
- **Robots** (</cms/en/applications/robotics/industrial-robots/>)

 [Seite folgen](#)



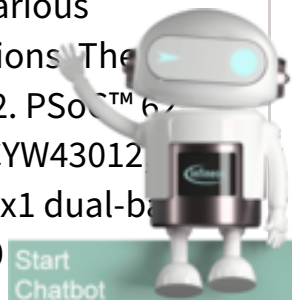


Related links

- > CIRRENT™ Cloud ID (<https://www.cypress.com/products/cirrent-cloud-id>)
- > OPTIGA™ Trust M (/cms/en/product/security-smart-card-solutions/optiga-embedded-security-solutions/optiga-trust/optiga-trust-m-sls32aia/)


Parameter

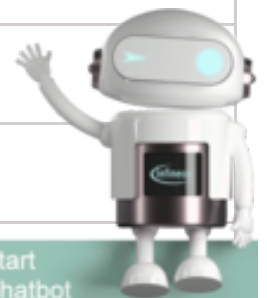
Parametrics	OPTIGA TRUST M IOT KIT
Family	Security
Input Type	DC
Product Description	<p>The OPTIGA™ Trust M IoT Security Development Kit is the easiest way to develop and evaluate end-to-end security use cases for your IoT devices. The kit enables customers to prototype various security use cases and build full-featured IoT applications. The board includes:</p> <ol style="list-style-type: none"> 1. OPTIGA™ Trust M security solution 2. PSoC™ 6 3. an Arm® Cortex®-M4/M0+ microcontroller 3. AIROC™ CYW43012 ultra-low-power single-chip combo device featuring 1x1 dual-band 2.4 GHz and 5 GHz Wi-Fi 4 (802.11n) and Bluetooth 5.0
Qualification	Industrial ; Consumer



Parametrics	OPTIGA TRUST M IOT KIT
Sub Application	Cloud authentication ; Device authentication ; Secured cloud communications ; IP Protection ; Secured SE/FW updates
Supply Voltage min max	3.6 V 4.2 V
Target Application	Smart Home ; Smart Door Lock ; Industrial Automation (PLC, Drives) ; Surveillance Cameras ; Smart Lighting ; Smart Building

Bestellung

Produktname	OPTIGA TRUST M IOT KIT
OPN  Info	TRUSTMIOTSDKTOBO1
Produktstatus	active and preferred
Gehäusename	--
Standard Package name	
Onlinebestellung	
Bleifrei	yes
Halogenfrei	
RoHS konform	yes
Verpackungsgröße	1
Verpackungstyp	CONTAINER
Moisture Level	



Produktname	OPTIGA TRUST M IOT KIT
Moisture Packing	NON DRY

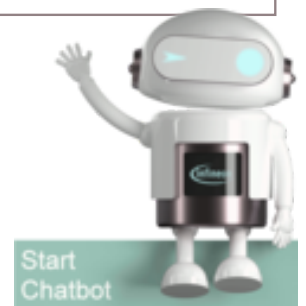
Videos

We use both our own and third-party cookies to enable the correct functioning of our services and, with your consent, to provide analytics and a personalized experience based on your interaction with our services. You can click on "ACCEPT ALL" to accept all cookies or click on "REJECT ALL" to reject non-essential cookies. Please read our [Cookie Policy](https://doc.movingimage.com/display/cookies/Movingimage+Cookie+F) (<https://doc.movingimage.com/display/cookies/Movingimage+Cookie+F>) for more details, including how to revoke your consent in future if desired.



Unbox the OPTIGA™ Trust M IoT Security Development Kit with Amit [Share](#)
This video shows the OPTIGA™ Trust M IoT Security Development Kit, which is the easiest way to develop and evaluate end-to-end security use cases for your IoT devices.

Support



Top 6 FAQs. Nutzen Sie die obenstehende Suchleiste für mehr Treffer.

Technischer Support

Der beste Weg, unsere Spezialisten zu erreichen, ist unsere Developer Community <https://community.infineon.com> (<https://community.infineon.com>)

Unsere Spezialisten moderieren die Community, um sicherzustellen, dass alle Fragen schnell und präzise beantwortet werden, entweder von anderen Mitgliedern der Community oder von unseren eigenen Ingenieuren....

[+ Mehr lesen](#)

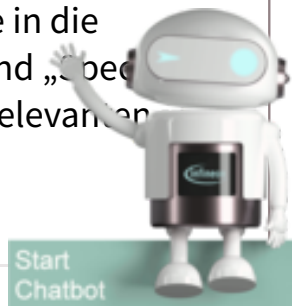
Partner für Software, Hardware, Dev-Tools, Services, Support

Die Partner von Infineon bieten Produkte und Dienstleistungen an, die unsere Lösungen ergänzen, um Ihre Entwicklung und Markteinführung zu beschleunigen. Sie können Sie hier finden: <https://www.infineon.com/partnerfinder> (<https://www.infineon.com/partnerfinder>).

[+ Mehr lesen](#)

Gehäuseinformationen

Die Gehäuseinformationen finden Sie auf **unserer Homepage** (<https://www.infineon.com/packages>). Bitte beachten Sie, dass diese in die Kategorien „Leaded and Through-hole“, „Surface Mounted Devices“ und „Special Packages“ unterteilt sind. Unter dem jeweiligen Punkt finden sie alle relevanten Gehäuseinformationen.



[+ Mehr lesen](#)

Verarbeitungshinweise

Informationen zu Reflow-Profil, Löttemperatur, Lötprofil und weitere Verarbeitungshinweise für die meisten diskreten Produkte sind in der Application Note aufgeführt.

Unter <https://www.infineon.com/packages>
(<https://www.infineon.com/packages>) finden Sie das Dokument "General...

+ Mehr lesen

Design-In-Unterstützung

Wir bieten Ihnen Design-in-Unterstützung für Ihre Anwendung.

Sie finden den Infineon Solution Finder unter

<https://www.infineon.com/solutionFinder>
(<https://www.infineon.com/solutionFinder>)

Hier haben Sie die Möglichkeit, sich mit den von Ihnen gewünschten...

+ Mehr lesen

Simulation Parameter/SPICE-Modelle

Bitte besuchen Sie unseren Simulations Model Finder im Internet unter

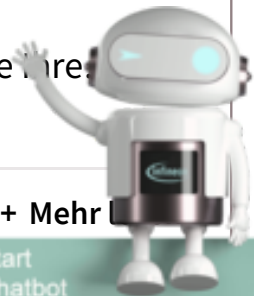
<https://www.infineon.com/simulation> (<https://www.infineon.com/simulation>)

Bitte wählen Sie dort "Simulation Models (SPICE, S-parameters, SABER)" aus.

Sollten Sie Ihr gesuchtes Model dort nicht finden können, stellen Sie bitte Ihre


+ Mehr

Start
Chatbot



© 1999 - 2023 Infineon Technologies AG

苏ICP备15016286号-1 (<http://beian.miit.gov.cn/>)

 苏公网安备 32021402001016号 (<http://www.beian.gov.cn/portal/registerSystemInfo?recordcode=32021402001016>)

