

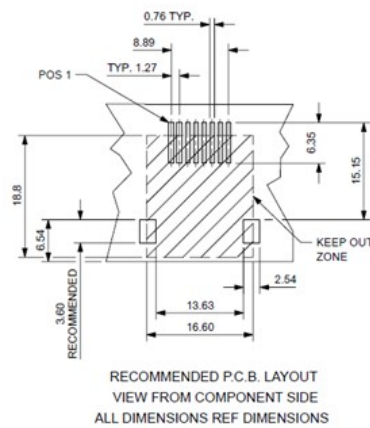


# Product Change Notification

<b>Date Issued :</b>	May 12, 2023	<b>PCN Number :</b>	513402
<b>Reason for Change :</b>	Change to Product		
<b>Description of Change :</b>	The recommended PCB layout in the drawing for PN 855437002 has been changed; there is no form/fit/functional impact on the part.		
<b>Reason for Short Notice :</b>	Special Request		
<b>Assessment of Change :</b>	No change to parts - Form/Fit/Function		
<b>Planned Implementation Date :</b>	July 15, 2023		
<b>Sample Availability Date:</b>	May 31, 2023		
<b>Internal Molex Qualification Date :</b>	May 31, 2023		
<b>Last date to request Samples by Customer :</b>	June 30, 2023		
<b>Traceability Code Markings / Date :</b>	No special marking on the product or packaging		

Before Picture

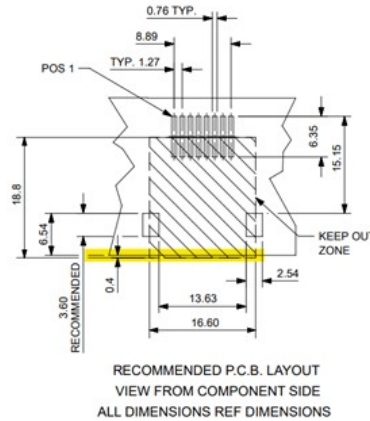
## ■ Photo of affected product



After Picture

## Overview

- The recommended PCB layout in the drawing for PN 855437002 has been changed; there is no form/fit/functional impact on the part.



- Product Impact: no impact to fit, form or function
- Part Number Impact: 855437002

# RELEASED

You may address inquiries regarding this PCN by clicking on the below link  
[mailto:pcn\\_coordinator@molex.com?subject=PCN\\_Notification:513402](mailto:pcn_coordinator@molex.com?subject=PCN_Notification:513402)  
 or contact your Local Sales Engineer.

Note: While responding, please retain " PCN Notification : **PCN Notification: 513402** " in the e-mail Subject line for faster response.

**Molex, LLC**  
 2222 Wellington Court  
 Lisle, IL 60532  
 TEL (800) 786-6539  
[www.molex.com](http://www.molex.com)