



EAN:	4013288221797	Size:	120x50x26 mm
Part number:	05020150001	Weight:	70 g
Article number:	6004 Joker VDE XS	Country of origin:	CZ
		Customs tariff number:	82041100

- The adjustable Joker 6004 VDE covers all metric and imperial dimensions in the respective field of application
- Individually tested tools with insulated handles for safe working up to 1,000 volt, with anti-slip protection and sliding function for contactless and safe opening of the non-insulated jaws
- Automatic and continuous grip of hexagon screws and bolts
- Lever mechanism when gripping avoids slipping and damage
- Fast and consistent screwdriving without removing the wrench thanks to mechanical ratchet function
- Return angle of only 30° through placement in the corner-width rectangular prisms in the mouth

Individually tested tools as per IEC 60900 at 10,000 V for safe working at the approved voltage of 1,000 V. The adjustable VDE spanner continuously and automatically grips all hexagonal sizes in the indicated range of dimensions - metric and imperial. The integrated lever mechanism securely clamps the hexagon screw or bolt between the jaws, which significantly reduces the risk of slippage or damage. The ratchet feature ensures fast and consistent screwdriving without removing the tool. By using the corner-width rectangular prisms, a back-pivoting angle of only 30° can be achieved. The single-arm design, in conjunction with the ratchet feature and the corner-width prism, makes it possible to work even in confined spaces. The adjustable Joker 6004 VDE has a naturally comfortable handle thanks to the 2-component plastic insulation. Safety is increased by the anti-slip protection at the front end of the handle. The sliding function offers contactless and safe opening of the non-insulated jaws, thereby providing extra protection.



Web link

https://products.wera.de/en/tools_by_trade_tools_for_electricians_joker_vde_spanner_6004_joker_vde-insulated_self-setting_spanners_6004_joker_vde_xs.html

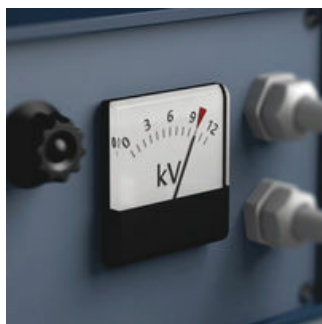
Wera - 6004 Joker VDE XS
05020150001 - 4013288221797

Wera Werkzeuge GmbH
Korzerter Straße 21-25
D-42349 Wuppertal
Tel: +49 (0)2 02 / 40 45-0
E-Mail: info@wera.de

Individually tested

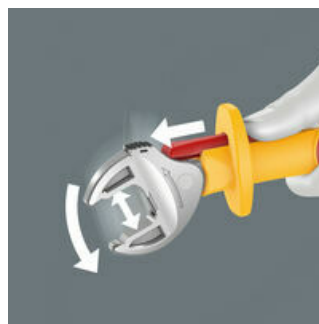


Joker 6004 VDE: ratchet mechanism for quick working



The individual testing at 10,000 volts, in accordance with IEC 60900, ensures safe working with loads up to 1,000 volts.

Safe opening of the jaws



The sliding function allows contactless and safe opening of the non-insulated jaws.

Anti-slip protection



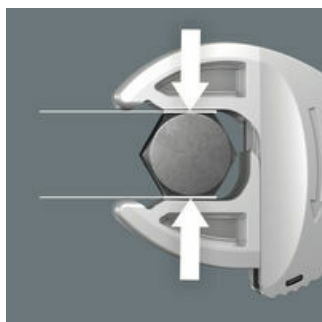
The anti-slip protection at the front end of the handle ensures a secure hold and prevents your hand from accidentally slipping forward.

Joker 6004 VDE: automatically and continuously self-setting



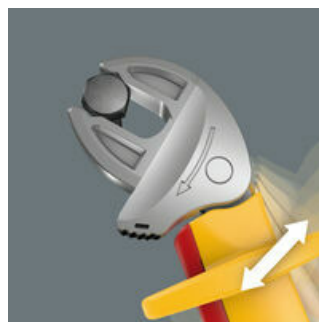
With its automatically and continuously gripping parallel jaws the Joker 6004 VDE spanner covers all dimensions within the potential operative range. The tool finds the required size by itself when attaching it to the bolt or screw.

Joker 6004 VDE: gentle to the screw



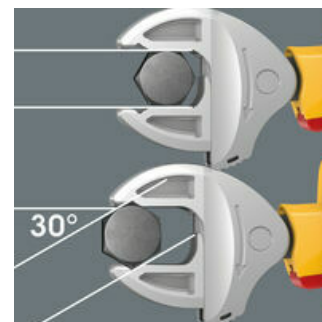
The parallel, smooth jaws of the Joker 6004 VDE offer a seating stress and can thus prevent the nut or screw head from rounding, which can occur when power is transmitted over corners.

Joker 6004 VDE: ratchet mechanism for quick working







The ratchet function in the mouth sees to fast and consistent screwdriving without removing the tool.

Joker 6004 VDE: low return angle



Thanks to the corner-width rectangular prisms, a return angle of only 30° can be achieved.

Further versions in this product family:

	 mm	 inch	 mm	 mm
05020150001	7-10	1/4"-3/8"	119	7.7

Web link

https://products.wera.de/en/tools_by_trade_tools_for_electricians_joker_vde_spanner_6004_joker_vde-insulated_self-setting_spanners_6004_joker_vde_xs.html

Wera - 6004 Joker VDE XS
05020150001 - 4013288221797

Wera Werkzeuge GmbH
Korzerter Straße 21-25
D-42349 Wuppertal
Tel: +49 (0)2 02 / 40 45-0
E-Mail: info@wera.de